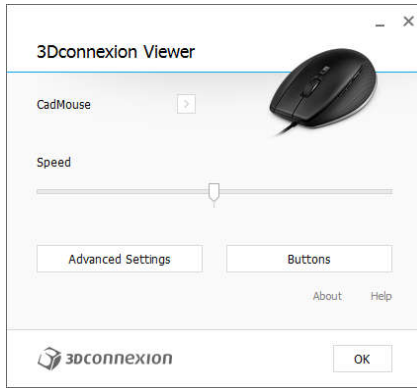


3Dconnexion CadMouse Properties Panel

You can access the 3Dconnexion Properties panel via the icon in your notification area (systray), 3D Mouse Home (on your desktop) or by selecting properties from the radial menu (by default this is launched by pressing the Radial Menu Button on the top of the CadMouse).



Speed

This slider sets the overall speed for your CadMouse.

Note: The CadMouse speed slider sets speed globally for all applications.

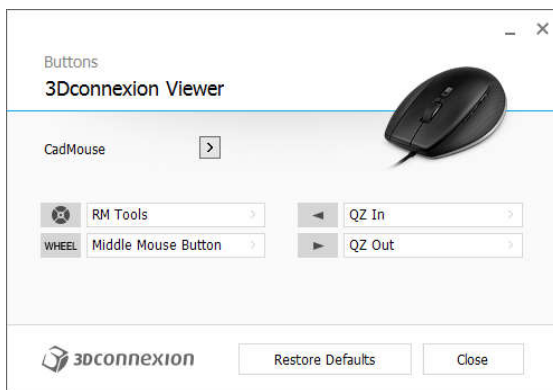
Advanced Settings

This is where you can configure specific CadMouse settings.

Buttons

The Buttons panel within 3Dconnexion Properties allows you to assign commands, Macros or Radial Menus to the CadMouse buttons.

The active application is displayed at the top left of the panel and any changes made are only applied to that application. This allows you to configure your CadMouse individually for each of your applications.



Environment sensitivity

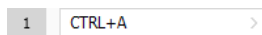
Some applications feature environment sensitive button mapping.

In those applications you can have different button assignments depending on the current active environment. More information can be found in the application specific help sections of the affected applications:

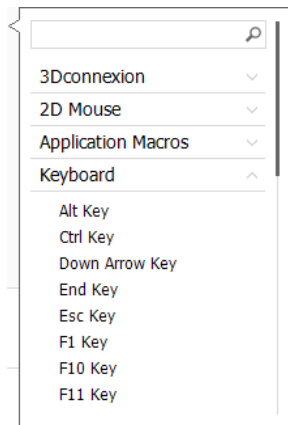
Autodesk Inventor
Siemens NX
PTC Creo Parametric
Siemens Solid Edge
Dassault Systèmes SolidWorks

Assigning "Quick Macros" to buttons

To quickly assign a keystroke or macro to a button, simply click on the text in the button field and press the required key or key combination. For example, in the screenshot below, clicking on "CTRL+A" would make the field active and the next keyboard command pressed would be assigned to button number 1.

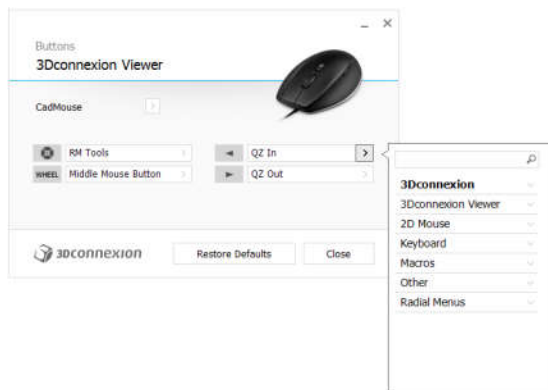


Note: When a macro is created, it always sends a "press and release" command. If you want to assign a "press and hold" command (for example Ctrl or Shift), you should use the "Keyboard" command category in the flyout window (i.e. not the "Quick Macro" function described above).



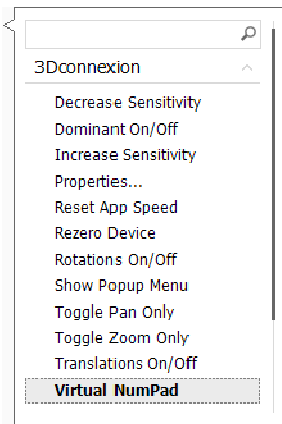
Assigning Commands using the flyout window

Clicking on the ">" arrow on the right hand side of the button field opens a flyout window for that CadMouse button:



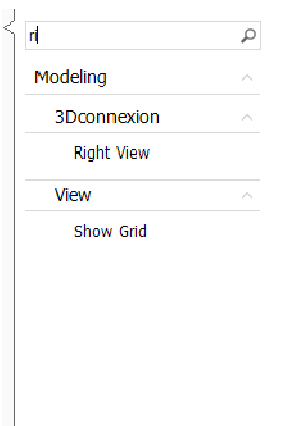
The category of the command that is currently assigned to that button is highlighted in bold.

The flyout window allows you to browse or search for commands in different categories such as 3Dconnexion or application commands. When you select a command by clicking on it, it is automatically assigned to the CadMouse button:



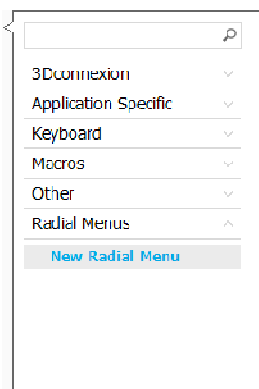
Using the Live Search field

You can search for specific commands by typing text into the Live Search field. Only commands (and their parent categories) which contain the text sequence you enter are shown in the flyout window.

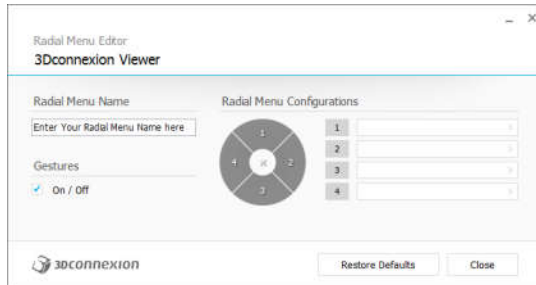


Creating Radial Menus

To create a new Radial Menu, expand the "Radial Menu" category and click on "New Radial Menu".

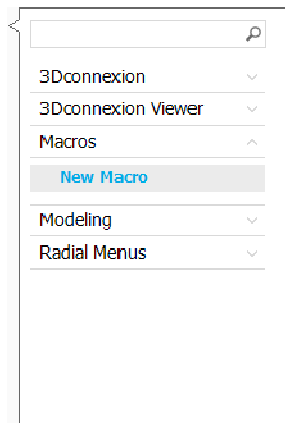


This brings up the Radial Menu Editor where you can assign a name and commands to the different sections. Your new Radial Menu will be automatically assigned to the button from where you opened the panel. Enabling "Gestures" allows commands mapped to the radial menu to be executed by moving the cursor past the desired command, without having to click the radial menu button.

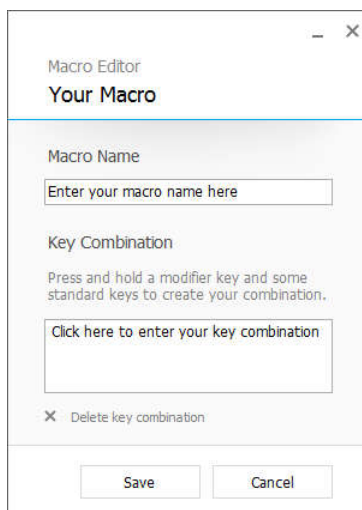


Creating Macros

To create a new Macro, expand the "Macro" category and click on "New Macro".

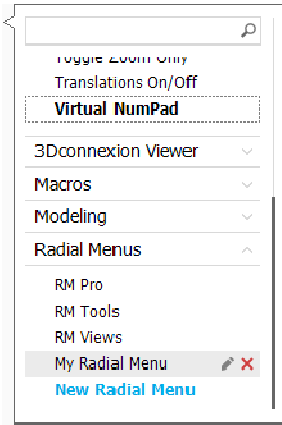


This opens the Macro Editor where you can assign a name for your Macro and a sequence of keystrokes in the corresponding fields. Clicking on "Save" will automatically assign the new Macro to the button from where you opened the panel.



Editing and deleting user defined Radial Menus and Macros

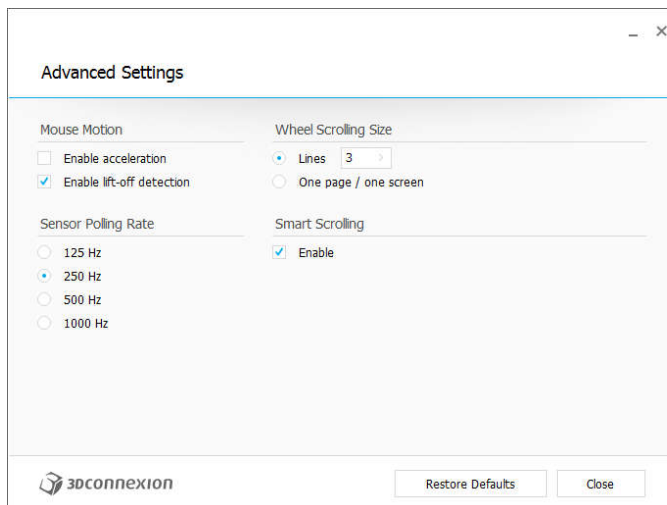
To edit or delete a user defined Macro or Radial Menu, Click on the corresponding pencil (edit) or cross (delete) icons in the button mapping flyout window:



Note: These icons are only available for user-created Macros and Radial Menus. 3Dconnexion pre-defined Macros and Radial Menus cannot be edited or deleted.

CadMouse Advanced Settings

Select "Advanced Settings" from the first panel of the 3Dconnexion properties window.



Mouse Motion Settings:

Enable Acceleration: If the mouse is moved faster, the cursor will move further across the screen.

Enable lift-off detection: If the mouse is lifted off the mouse pad the cursor will not move.

Sensor Polling Rate:

Select the frequency at which the CadMouse laser sensor operates. A higher frequency results in more accurate tracking and smoother movement of the cursor.

Wheel Scrolling Size:

Lines: Select the number of lines scrolled when the mouse wheel is moved 1 increment.

One page / one screen: Moving the mouse wheel 1 increment will scroll to the next/previous page.

Wheel inertia:

If the mouse wheel is scrolled rapidly the screen will keep scrolling until the mouse wheel is moved in the opposite direction 1 increment. This is useful for scrolling through long pages of text in documents and browsers.

CadMouse Application Specific Commands



CadMouse Specific Functions

QuickZoomIn: Zooms in on the object and centering around the cursor's location when the command is executed.

QuickZoomOut: Zooms out the view.

The following applications have the quickzoom feature available:

3Dconnexion Viewer, Autodesk 3ds Max, Autodesk AutoCAD, Autodesk Inventor, Autodesk Maya, Dassault Systèmes Catia, Dassault Systèmes SolidWorks, PTC Creo, Siemens NX, Siemens, Solid Edge, Trimble SketchUp

Additional Applications and Features Coming Soon!

3Dconnexion continuously works with its partners to provide their customers with the best experience possible. Please contact 3Dconnexion technical support for the most up to date information on CadMouse specific functionality in your application!

Universal Receiver

Reliable data transmission

Simply pop the USB receiver into your PC or Mac, and enjoy a cord free environment with the performance and reliability of a wired one. Its 2.4GHz technology ensures a stable connection without any signal droppings. Due to its small size it can be kept in your notebook's USB port while you switch location without risking damage.

Universal Receiver quick configuration

Connect up to five 3Dconnexion wireless products with only one receiver. Via 3Dx Ware 10 you have an overview of your paired devices and easily add new or remove existing.

Easy Pairing

Pairing your 3Dconnexion wireless products to your Universal Receiver couldn't be any easier: first download and install the latest version of 3DxWare 10. After selecting Universal Receiver, click Add device and follow the instructions of the dialog window.

FCC Caution

§ 15.19 Labelling requirements. This device complies with part 15 of the FCC Rules. Operation is subject to the following two conditions: (1) This device may not cause harmful interference, and (2) this device must accept any interference received, including interference that may cause undesired operation.

§ 15.21 Information to user.

Any Changes or modifications not expressly approved by the party responsible for compliance could void the user's authority to operate the equipment.

§ 15.105 Information to the user.

Note: This equipment has been tested and found to comply with the limits for a Class B digital device, pursuant to part 15 of the FCC Rules. These limits are designed to provide reasonable protection against harmful interference in a residential installation. This equipment generates uses and can radiate radio frequency energy and, if not installed and used in accordance with the instructions, may cause harmful interference to radio communications. However, there is no guarantee that interference will not occur in a particular installation. If this equipment does cause harmful interference to radio or television reception, which can be determined by turning the equipment off and on, the user is encouraged to try to correct the interference by one or more of the following measures:

- Reorient or relocate the receiving antenna.
- Increase the separation between the equipment and receiver.
- Connect the equipment into an outlet on a circuit different from that to which the receiver is connected.
- Consult the dealer or an experienced radio/TV technician for help.

*** RF warning for Portable device:**

The device has been evaluated to meet general RF exposure requirement. The device can be used in portable exposure condition without restriction.

IC Caution.

This device complies with Industry Canada licence-exempt RSS standard(s).

Operation is subject to the following two conditions: (1) This device may not cause interference, and (2) This device must accept any interference, including interference that may cause undesired operation of the device.

Le présent appareil est conforme aux CNR d'Industrie Canada applicables aux appareils radio exempts de licence. L'exploitation est autorisée aux deux conditions suivantes:

(1) l'appareil ne doit pas produire de brouillage, et

(2) l'utilisateur de l'appareil doit accepter tout brouillage radioélectrique subi, même si le brouillage est susceptible d'en compromettre le fonctionnement.