



HEY. HAVE WE SEEN YOU HERE BEFORE?

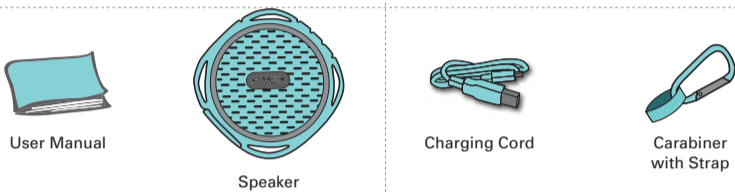
Register your speaker at www.hmdxaudio.com. Information about where you bought it and how you're using it is like gold for the people who make these speakers. Do them a solid, will ya?

Por manual de instrucciones e información de garantía en español visítenos en www.hmdxaudio.com.

There are lots of cool HMDX speakers. Check them all out at www.hmdxaudio.com.

Setup is pretty easy, but we put a manual together just in case you need it. It's full of information and sarcasm—just like that English teacher you had that crazy semester.

PACKAGE CONTENTS

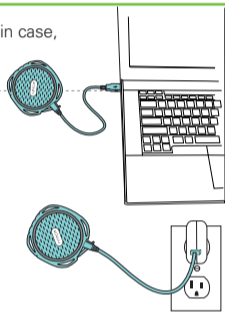


JUST CHARGE IT

Charging the speaker is so easy you've probably figured it out by now, but just in case, you've got two options: You can charge it using your computer or a wall outlet.

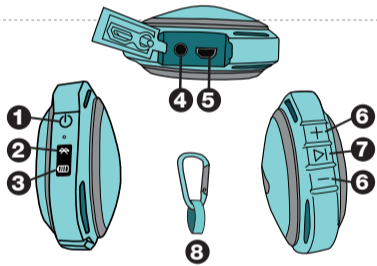
1. The cord that came with the speaker — the one with the USB on one end and the Micro USB on the other — is made to work with your computer.
2. If you want to use the wall outlet, you'll need to pick up a power cord with a Micro USB the next time you're at the store or use any USB AC adaptor, including the one for your cell.

Plug it in and your speaker will be ready for an epic night in no time. You should go get ready too! It needs about 3 hours for 6 hours of party time.



CONTROL YOUR DESTINY...OR AT LEAST YOUR SPEAKER

1. This is the power button, press and hold for 5 seconds to power on.
2. This light lets you know when Bluetooth is paired with your speaker.
3. Check out how much juice is in the battery.
4. Here's where you use a mini jack cord to hook it up old-school.
5. The power cord goes here.
6. Turn the music up or down. (Wait, why do you need to turn it down?)
7. Push it to play, push it again to pause.
8. Carabiner



BLUETOOTH® CONNECTION: IT'S A SETUP

Like any amazing couple, this one starts with a connection—one between your device and the speaker's Bluetooth.

Here's how it works:

1. We know you're probably going to think, "derp" with this one, but we have to say it: Make sure the smartphone, tablet or computer you want to hook up to the speaker has Bluetooth. (There. We got that out of the way.)
2. Turn on the speaker (press and hold for 5 seconds) and look for the little blinking light.
3. Do whatever your device needs you to do on its end. (We don't know what you're using. We're not spies.)
4. Look for HMDX Flow in your device's Bluetooth list or click YES—whatever pops up on your device—and BAM! you're connected.

5. Now hit PLAY on your speaker and crank it up—or down if you're lame.

You're probably only going to have to do this once, unless your device goes through a major I-just-dropped-it-in-the-pool kind of reboot. The device and Bluetooth will find each other every time just as long as the speaker is set to Bluetooth and your device's Bluetooth is, you know—on.

If you're connecting to a computer, you may have some extra steps on that end. You'll have to get that information from the computer company.

Depending on your device you may be prompted to enter a pairing code. If prompted enter "0000" as the code.

ALLOW US TO SHED SOME LIGHT

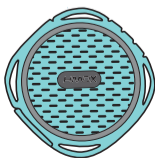
	What It Looks Like	What it Means
CHARGE	Solid RED	Charging
	Light Off	Ready to Party (Light will only show when unit is plugged in)
	Quick Flash BLUE	Looking for Bluetooth
	Slow Flash BLUE	Connected
	RED	Hooking up old-school with a cord



HOOKING UP OLD SCHOOL AUDIO, JACK

1. Plug one end of the cord into the speaker and the other into the headphone jack on your device.
2. Turn on the speaker.
3. Hit PLAY on your device and crank it up—or down if you're lame.

You'll have to play and pause the music from your device, not your speaker. No problem. You're there anyway, right?



HELLO? SPEAKERPHONE? YES!

When friends call asking to join the party—and you know they will—answer the phone without disconnecting from your HMDX Flow. Yes, that's right. Your speaker is a speakerphone too. How amazing is that?

Here's how it works:

1. Make sure your phone and the speaker are connected through Bluetooth.
2. Answering and ending a call works the same way: simply click the PLAY/PAUSE button on your Flow.
3. If you'd rather not talk, hold down the PLAY/PAUSE button on your Flow for three seconds to ignore the call.

THE COOLEST PART: The Flow knows when a call is coming in and pauses the music before ringing. When you hang up, the music starts where it left off—and so does the party. If it's you making the call, just start dialing from your phone, and the Flow automatically does its hands-free thing. Isn't it refreshing to know your speaker totally gets you?

LITTLE BIT OF WATER? NO WORRIES.

The smart folks who made this speaker designed it to keep the party going through just about anything, even water. (They call it IPX4.) But those designers aren't miracle workers. Doing something like sending your speaker for a swim in the deep end will, at some point, fill those holes you need for incredible sound with water—and that's just not going to bode well for anyone or anything. Also, remember to keep the back flap flush with the speaker for the best protection.

COMING CLEAN

A soft, dry towel is all you need to clean off your speaker. Using water, harsh cleaners or anything else only starts messing with the mechanics inside. So, yeah, don't do it.

STUFF THE GOVERNMENT MAKES US SAY

FCC Disclaimer:

Note: This device complies with part 15 of the FCC Rules. Operation is subject to the following two conditions: (1) This device may not cause harmful interference, and (2) this device must accept any interference received, including interference that may cause undesired operation.

Note: This equipment has been tested and found to comply with the limits for a Class B digital device, pursuant to part 15 of the FCC Rules. These limits are designed to provide reasonable protection against harmful interference in a residential installation.

This equipment generates, uses and can radiate radio frequency energy and, if not installed and used in accordance with the instructions, may cause harmful interference to radio communications. However, there is no guarantee that interference will not occur in a particular installation.

If this equipment does cause harmful interference to radio or television reception, which can be determined by turning the equipment off and on, the user is encouraged to try to correct the interference by one or more of the following measures:

- Reorient or relocate the receiving antenna.
- Increase the separation between the equipment and receiver.
- Connect the equipment into an outlet on a circuit different from that to which the receiver is connected.
- Consult the dealer or an experienced radio/TV technician for help.

Note: Changes or modifications not expressly approved by HMDX could void the user's authority to operate this equipment.

ONE YEAR LIMITED WARRANTY

For detailed Warranty Instructions and Information visit:

<http://www.hmdxaudio.com/customer-support/warranty-1yr>

To obtain warranty service on your HMDX product, contact a Consumer Relations Representative by telephone at 1-800-753-3000 or email cservice@hmdxaudio.com for assistance. Please make sure to have the model number of the product available. Representatives are available 8:30am - 7:00pm EST Monday-Friday.

STUFF OUR LAWYERS MAKE US SAY

IMPORTANT SAFEGUARDS:

When using an electrical product, basic precautions should always be followed, including the following:

READ ALL INSTRUCTIONS BEFORE USING

- Close supervision is necessary when this product is used by, on or near children, invalids or disabled persons.
- **WARNING:** Do not place speakers too close to ears. May cause damage to ear drums, especially in young children.
- Use this product only for its intended use as described in this manual. Do not use attachments not recommended by HMDX.
- HMDX is not liable for any damage caused to Smartphones, iPod/MP3 player or any other device.
- Do not place or store this product where it can fall or be dropped into a tub or sink.
- Do not place or drop into water or any other liquid.
- Not for use by children. THIS IS NOT A TOY.
- Never operate this product if it has a damaged cord, plug, cable or housing.
- Turn off product when not in use.
- Keep away from heated surfaces.
- Only set on dry surfaces. Do not place on surface wet from water or cleaning solvents.

SAVE THESE INSTRUCTIONS

CAUTION: Please read all instructions carefully before operating.

- Never leave the product unattended, especially if children are present.
- Never cover the product when it is in operation.
- This unit should not be used by children without adult supervision.
- Always keep the product away from high temperature and fire

A MESSAGE FROM THE ENVIRONMENT

WARNING:

This product has an internal, non-replaceable lithium battery. Please dispose in accordance with your local state, province and country guidelines.

This product contains small parts that may present a choking hazard for young children.

CAUTION: All servicing of this product must be performed by authorized HMDX Service Personnel only.

big sound
small space

Por manual de instrucciones e Información de garantía en español visítenos en www.hmdxaudio.com