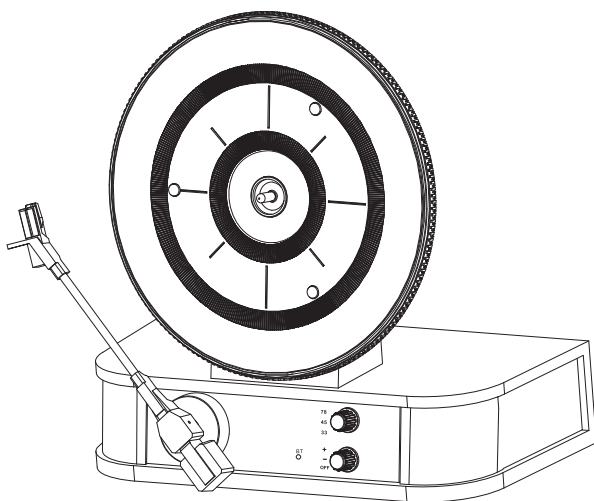


Classical Turntable with BT, Line Out



MODEL: TR-W286

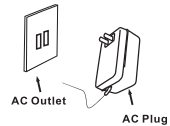
Instruction Manual

PREPARATION FOR USE

UNPACKING AND SET UP

- Carefully remove the unit from the display carton and remove all packing material from the unit.
- Unwind the AC power cord and extend it to its full length.
- Place the unit on a stable, level surface, convenient to an AC outlet, out of a strong magnetic field.
- Connect the plug to your AC outlet.
- Remove the white plastic stylus cover from the phonograph stylus by sliding it in the direction of the arrow.
- During this operation pay attention to the stylus, because the stylus damage is not covered by guarantee.

This product is designed to operate on DC12V 1A only. Attempting to operate this system from any other power source may cause damage to the system, and such damage is not covered by your warranty.



NOTE: You will note that this system is equipped with domestic standard AC power plug. If this plug does not fit into your existing AC outlet, do not try to defeat this safety feature by filing the wide blade to make it fit into your outlet. If this plug will not fit into your outlet, you probably have an outdated non-polarized AC outlet. You should have your outlet changed by a qualified licensed electrician.

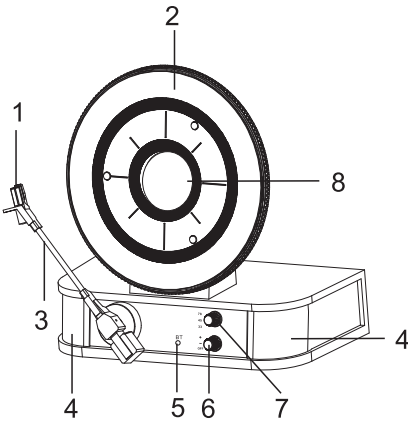
PROTECT YOUR FURNITURE

This model is equipped with non-skid rubber 'feet' to prevent the product from moving when you operate the controls. These 'feet' are made from non-migrating rubber material specially formulated to avoid leaving any marks or stains on your furniture. However certain types of oil based furniture polishes, wood preservatives, or cleaning sprays may cause the rubber 'feet' to soften, and leave marks or a rubber residue on the furniture. To prevent any damage to your furniture we strongly recommend that you purchase small self-adhesive felt pads, available at hardware stores and home improvement centers everywhere, and apply these pads to the bottom of the rubber 'feet' before you place the product on fine wooden furniture.

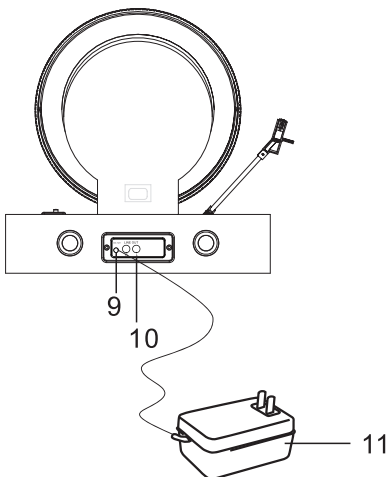
CARE OF THE CABINETS: You should care for the cabinet as you would care for any piece of the furniture. When the cabinet becomes dusty wipe it with a soft, non-abrasive dust cloth. If the cabinet becomes smudged with fingerprints you may use any good quality commercial dusting and polishing spray cleaner, however avoid spraying the plastic or metal parts of this system. We recommend that you spray the cleaner on your dust cloth. Not directly on the cabinet. to avoid getting any of the spray on the plastic or metal parts.

LOCATION OF CONTROLS AND INDICATORS

FRONT PANEL



- 1) Cartridge & Stylus
- 2) Turntable
- 3) Tone Arm
- 4) Speakers
- 5) BT Indicator Light
- 6) OFF/VOLUME Knob
- 7) Speed Control Knob
- 8) Magnetic Adapter



- 9) Power Jack
- 10) Line Out Jack
- 11) AC Adapter

OPERATING INSTRUCTIONS

BT Function:

1. Bluetooth is the default function when unit is turned on. Make sure the record player arm is rotated to the left (reset position) for BT to function correctly.
2. Unit is ready for pairing when there is a short audio tone followed by flashing of the BT indicator light. To pair, simply scan with your phone or other portable device then connect to item # "BT". Enter password "0000" if a password is required during pairing.
3. A short tone from unit will play to confirm when your device has been paired.
4. Adjust volume on both portable device and unit to reach desired level.

NOTE:

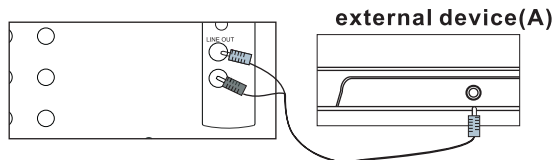
1. BT range is approx 10 meters.
2. Other BT devices nearby and interfere with signal.
3. Only 1 device can be paired at a time so disconnect first if pairing a different device. If you have already paired a device, disconnect it first if you are trying to connect the one you are working on.

TURNTABLE OPERATION

1. Rotate the ON/OFF knob to turn on the unit.
2. Rotate the SPEED CONTROL KNOB to the correct speed (33 1/3, 45 or 78 rpm) for the select record.
3. Take out the MAGNETIC ADAPTER, put a record on the TURNTABLE lightly, then put the MAGNETIC ADAPTER back to fix the record.
4. Move the tone arm over the record and lower it to point from which you want the record to start.
5. Rotate the volume control knob to get desired sound level.
6. At the end of the record, the tone arm will stop automatically.

LINE OUT OPERATION

This system includes a set of LINE OUT jacks which allow you to record from the Radio or Phonograph of this system to an external recording device such as a cassette recorder, Mini-Disc, etc. In any play mode, insert the audio cable (not include) into the matching "LINE OUT" socket of the unit, operate as usual, and through the speakers of A, we can hear the sound exported from.



Changes or modifications not expressly approved by the party responsible for compliance could void the user's authority to operate the equipment.