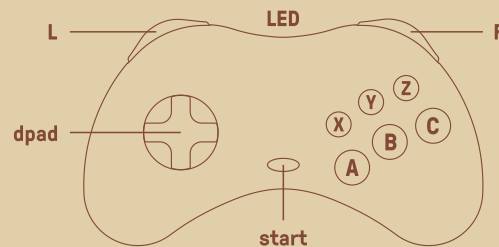
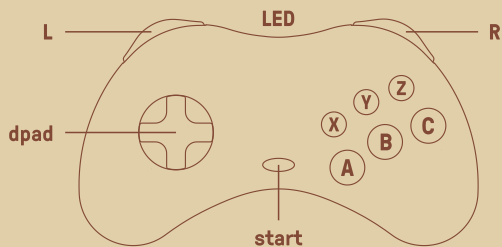
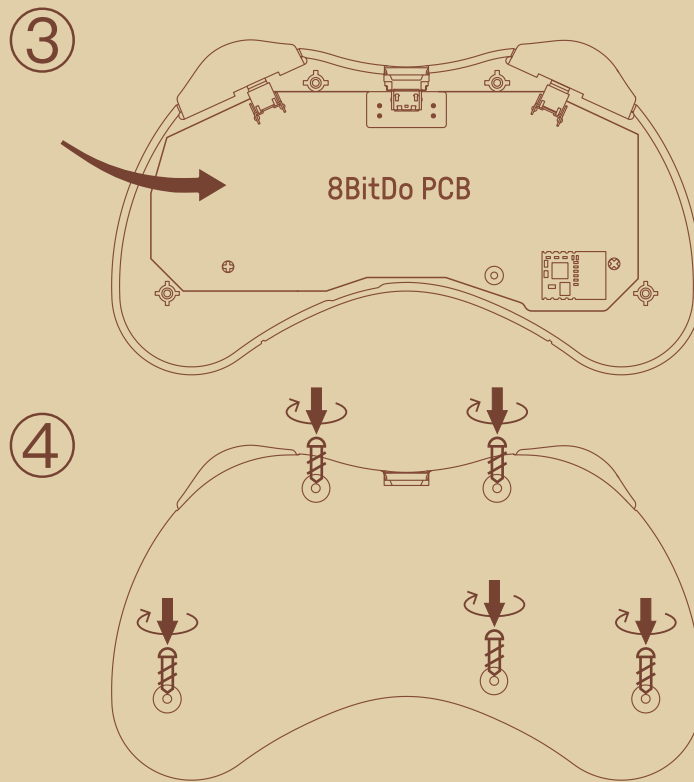
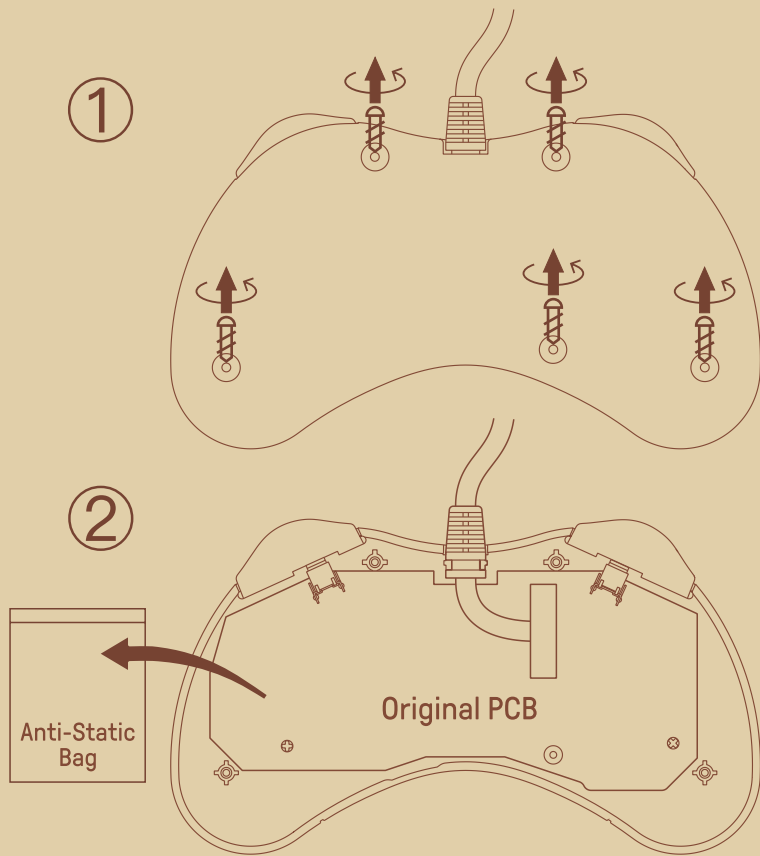


# Instructions - S30 Modkit

\* Please handle it with care.

We are not responsible for any damage caused in use.



## Controller Mode

- D-input: press **B + start** to turn on the controller, LED will blink once per cycle
- X-input: press **X + start** to turn on the controller, LED will blink twice per cycle
- mac mode: press **A + start** to turn on the controller, LED will blink 3 times per cycle
- Switch mode: press **Y + start** to turn on the controller, LED will blink 4 times per cycle
- Pairing: press and hold **L + R** for 3 seconds to enter its pairing mode, LED starts to rapidly blink
- Press **start** to turn back on the controller after mode switching, controller stays on its last mode

## Hot Keys

- Switch mode: **down + start** = Switch HOME button; **up + start** = Switch - button
- X-input mode: **up + start** = Back button

## battery

- |                       |   |                        |
|-----------------------|---|------------------------|
| <b>status -</b>       |   | <b>LED indicator -</b> |
| low battery mode      | → | red LED blinks         |
| battery charging      | → | red LED stays solid    |
| battery fully charged | → | LED turns off          |
- It takes about 90 minutes to fully charge

## support



- please visit [support.8bitdo.com](http://support.8bitdo.com) for further information & additional support

## 工作模式

- Dinput 模式: 按住 **B + start** 开启, 指示灯闪烁 1 下 / 次。
- Xinput 模式: 按住 **X + start** 开启, 指示灯闪烁 2 下 / 次。
- mac 模式: 按住 **A + start** 开启, 指示灯闪烁 3 下 / 次。
- Switch 模式: 按住 **Y + start** 开启, 指示灯闪烁 4 下 / 次。
- \* 配对: 非连接状态下, 按住 **L + R** 键 3 秒进入配对连接状态(指示灯快闪)。
- \* 切换模式后下次使用可直接按 **start** 键启动。

## 热键功能

- \* **down + start** 在 Switch 模式为 HOME 键功能
- \* **up + start** 在 Switch, 模式为减号键, 在 Xinput 模式为 Back 键功能

## 电源

- |             |   |              |
|-------------|---|--------------|
| <b>电量状态</b> |   | <b>指示灯状态</b> |
| 低电量         | → | 红灯闪          |
| 充电中         | → | 红灯亮          |
| 充电完成        | → | 指示灯熄灭        |
- \* 可使用配备的 USB 线进行充电, 充电时间约 90 分钟。

## 固件升级



- \* 请访问 <http://support.8bitdo.cn/> 了解详细信息。