

Trios2000

IDE - SELECTOR

User manual



911 COMPUTER CO., LTD



911 COMPUTER CO., LTD

Trios 2000
TRIOS 2000

1000000 1998



Trios2000



1. Introduction	5
2. Contents	6
3. Part Names	8
4. Installation Procedure	9
5. BIOS Setting	13
6. How to Use	14
7. Terms	14

911 COMPUTER CO., LTD

#1107, Pooangum RD 623, Yeosuam-obong, Kangnam-Ku, Seoul KOREA
TEL / 822-2593-9111
FAX / 822-204-9156
HTTP://www.911.co.kr

Trios2000



INFORMATION TO THE USER

This equipment has been tested and found to comply with the limits for a Class B digital device, pursuant to part 15 of the FCC Rules. These limits are designed to provide reasonable protection against harmful interference in a residential installation. This equipment generates, uses and can radiate radio frequency energy and, if not installed and used in accordance with the instructions, may cause harmful interference to radio communications. However, there is no guarantee that interference will not occur in a particular installation. If this equipment does cause harmful interference to radio or television reception, which can be determined by turning the equipment off and on, the user is encouraged to try to correct the interference by one more of the following measures:

- Reorient or relocate the receiving antenna.
- Increase the separation between the equipment and receiver.
- Connect the equipment into an outlet on a circuit different from that to which the receiver is connected.
- Consult the dealer or an experienced radio/TV technician for help.

WARNING

Changes or modifications not expressly approved by the manufacturer could void the user's authority to operate the equipment.

Trios2000

1. Introduction

Run multiple operating systems(OS) on the same PC - Win95, Win98, Win2000, Win NT, Unix, OS/2, Solaris and many others according to needs.

Functions

- Share one PC with 2 or more persons with their own OS (Ideal for family, room mate, business office, etc).
- Run different language - Windows98 in English, Spanish, Chinese, Korea, Japanese, etc.
- Free from shut-down and viruses - corruption of one boot drive does not impact any other boot drives.

Required environment

- IBM - Compatible PCs with Pentium or higher
- Award Bios/new AMI Bios, Phoenix Bios
- IDE System
- One HDD for each OS
- MS-DOS, WINDOWS95, WINDOWS98, WINDOWS2000 and WINDOWS NT are Trademark of Microsoft.
- OS/2 is a Trademark of IBM

Trios2000

2. Contents

The Contents of TRIOS are consisted as follow under Please check contents before loading.

Internal type

- TRIOS - 1
- HDD data cable - 3
- Power cable - 1
- Power splitter - 1
- Screw - 4
- User's Manual



• Trios



• Data cable



• Trios Power Cable



• HardDisk Power Cable

External type Cable Kit

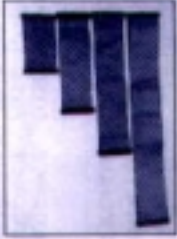
- Internal cable set(DATA Cable+ Cable + Bracket)
- HDD data cable(PC to TRIOS)
- Power cable(PC to TRIOS)
- Power cable(TRIOS to TRIOS)
- HDD Data Cable(10 Cm(S), 15 Cm(M), 20Cm(L))
- HDD Power cable - 1

External Type HDD Case

- HDD Case
- P.I Cable
- Screw - 4
- Case Connect Pin - 4



• Internal Cable Set



• HDD Data Cable



• Power Cable (PC to Trios)



• HDD Case



• P.I Cable



• HardDisk Power Cable

Trios 2000

Trios

3. Identifying Components

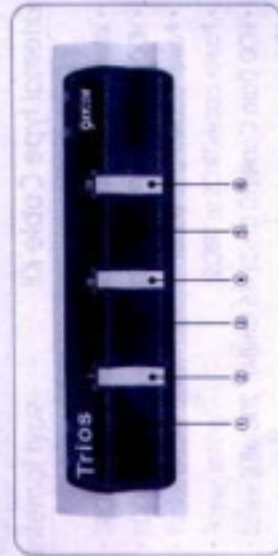


Fig. 11 Trios Front

- ① Indicating lamp of HDD 1
- ② Select button of HDD 1
- ③ Indicating lamp of HDD 2
- ④ Select button of HDD 2
- ⑤ Indicating lamp of HDD 3
- ⑥ Select button of HDD 3

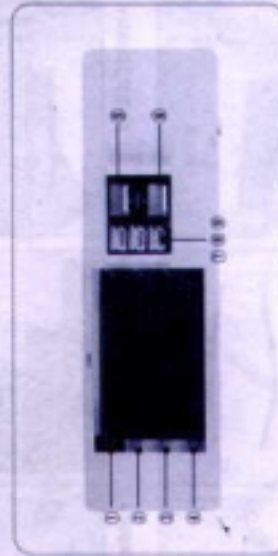


Fig. 12 Trios Rear

- ① IDE Connector (HDD 1)
- ② IDE Connector (HDD 2)
- ③ IDE Connector (HDD 3)
- ④ IDE Connector to main (C.H)
- ⑤ Power Cable (OUT)
- ⑥ Power Cable (IN)
- ⑦, ⑧, ⑨ LED Connector for external type (It does not use in internal type)

Internal Type Trios2000

4. Installation Procedure

- ① Remove the system cover and 5.25 inch bay cover. RG.1
- ② Secure TRIOS into an empty 5.25 inch bay. RG.2
- ③ Connect the single power cable to the "power in" slot of TRIOS. RG.3
- ④ **IMPORTANT**
Set the hard disk jumper of all hard disks (including original HD) to its "MS"(master select) setting. Please refer to your hard disk manufacture's manual for instructions.
Please use after changing every hard disk jumper to CS if hard disk can not be aware on setting Master jumper in some Main board. RG.4.
- ⑤ Connect the data cable from the motherboard into "C.H" connector of TRIOS located at bottom rear. RG.5 & RG.6.
- ⑥ Connect data cable to "H1" connector of TRIOS and hard disk1. RG.7 & RG.8.
- ⑦ Connect data cable to "H2" and hard disk2. "H3" & hard disk3. RG.7 & RG.8
- ⑧ Connect the power splitter to "power out" of TRIOS and connect to HDD2 & HDD3. RG.9 & RG.10
- ⑨ Make sure all of the connections are secure, and close the cover

Trides 2000
multimedia
subsystem



Fig. 1



Fig. 2



Fig. 3



Fig. 4



Fig. 5



Fig. 6



Fig. 7



Fig. 8

External Type

- ① Remove PC case cover. FG.1
- ② Connect Data cable of the Internal cable set to MOTHER BOARD IDE 1 (Primary) FG.11
- ③ Connect power of the Internal cable set to PC power unit.
- ④ Fix bracket of the Internal cable set FG.12
- ⑤ Install TRIOS in a safe position.
- ⑥ Insert HDD into HDD CASE and fix it with provided screws. FG.13
- ⑦ Fix TRIOS and HDD CASE with coupling pins. FG.14
- ⑧ Connect IDE DATA cable(S) to TRIOS H1 and connect to HDD. Connect IDE DATA cable(M) to TRIOS H2 and connect to HDD. Connect IDE DATA cable(L) to TRIOS H3 and connect to HDD. FG.15
- ⑨ Connect HDD power cable to TRIOS POWER OUT and connect to HDD. FG.16
- ⑩ Connect LED cable to LED and HDD CASE on back of TRIOS. FG.17
- ⑪ Connect extension IDE DATA cable to C.IN and extension POWER CABLE to POWER IN on back of TRIOS. Then, connect to internal cable set bracket. FG.18
- ⑫ Close PC case cover.



Fig. 9



Fig. 10

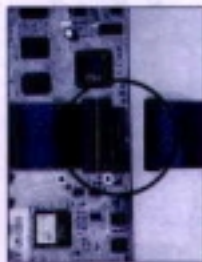


Fig. 11



Fig. 12



Fig. 13

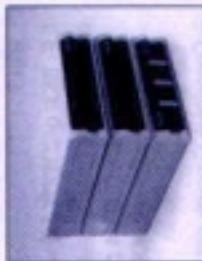


Fig. 14



Fig. 15



Fig. 16



Fig. 17

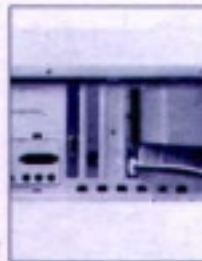


Fig. 18

Trios2000

5. Selecting BIOS

- ① At the time of the initial booting of your computer, press "Delete" key enter the "CMOS SET UP MODE"(AMI BIOS).
- ② Select "STANDARD CMOS SETUP"
- ③ Verify that Primary Master is set for "AUTO" under "type" and "mode" and Primary Slave set for "none" under "type".
- ④ Upon verification, press "ESC" key, and select "SAVE & EXIT SETUP".
- ⑤ Reboot the system
- ⑥ If BIOS is PHOENIX BIOS, set Primary Master to "AUTO" and Primary Slave to "none".

STANDARD CMOS SETUP		INTEGRATED PERIPHERALS	
BIOS FEATURES SETUP	CHIPS FEATURES SETUP	SUPERVISOR PASSWORD	USB PASSWORD
POWER MANAGEMENT SETUP	PNP / PCI CONFIGURATION	IDE HARD AUTO DETECTION	HDD LOW LIME FORWART
LOAD BIOS DEFAULTS	LOAD SETUP DEFAULTS	SAVE & EXIT SETUP	BIT WITHOUT SAVING
ESC: Out		← → : Select Item	
F10: Save & Exit Setup		Shift F10: Change Color	
Date (mm-dd-yy) Tue, Sep, 1999			
Time (hh:mm:ss) 12:00:00			
HARD DISK	TYPE	SIZE	MODE
Primary Master	AUTO	0	0
Primary Slave	NONE	0	0
Secondary Master	NONE	0	0
Secondary Slave	NONE	0	0
Drive A: 1.44MByte	3.5"		
Drive B: None			

Trios2000

6. How to Use

Ready for use after all cables are connected and CMOS SETUP is properly set.

Before powering up system, select the HDD you wish to boot from.

Then turn system on, it will automatically search for the selected HDD.

If you wish to work with another HDD, exit from the OS in use, turn off the system and select the HDD you wish to work with, then turn the power on.

Trios2000

7. Terms

- **BOOTING**

The process including POWER ON, system examination and initialization of system operating software.

- **Hard Disk Drive (HDD)**

Short for Hard Disk Drive. A type of external data storage. The capacity has become greater over the years.

- **Bay**

Located in the front part of computer, space for installation of 3.5" or 5.25" floppy disk drives, HDD or CD-ROM, etc.

- **I.D.E**

Generally controls PC HDD and allows data I/O. Most personal computer systems adopt this control.

- **CMOS**

A type of memory that stores basic settings of the system including general hardware information.

- **BIOS**

Control basic I/O, bridges hardware and software. (AWARD, AMI, Phoenix, etc.)

- **Primary Master**

Maximum four HDD controllers can be installed in the system. The first HDD of the first controller is called "Primary Master" and the second hard disk drive, "Primary Slave". The first HDD of the second controller is call "Secondary Master" and the second HDD, "Secondary Slave".

