

User's Guide

BatteryFREE Wireless Optical Mouse

Model: NB-72D



www.a4tech.com

Introduction

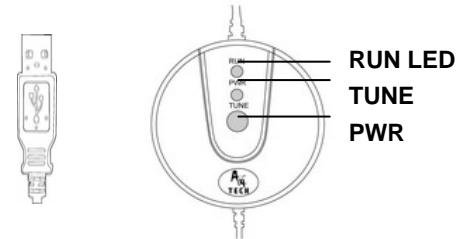
Congratulations on your purchase.

Your new BatteryFREE Wireless Optical Mouse will offer you wireless freedom, yet no battery is required.

Whilst saving you the cost of batteries, it assures wrist comfort, light, easy operation and no- RF interference.

Setting up your mouse pad and mouse is just a second away:

1. Plug the Mouse Pad's USB plug to your computer's USB port.
2. PWR LED on the Mouse Pad will be flashing in "RED"
3. Put the MOUSE onto the center of the MOUSE PAD.
4. PWR LED on the Mouse Pad will stop flashing become steady "RED"



5. Press the button "TUNE" to obtain the frequency for best performance. Do not move the mouse while the RUN LED is flashing in "GREEN"
6. You may move the mouse around once the RUN LED stopped flashing in "GREEN"
7. If the cursor doesn't move smoothly, please repeat steps 5 to 7.
8. RUN LED should light up with steady "GREEN" while mouse is circulating on the mouse pad.

NOTE:

1. Do not use this product on any metal table or surface. The metal surface may interfere with the cross induction and have an adverse effect on the mouse operation.
2. Keep working temperature under 0 to 50 degree Celsius (0°– 5°C).
3. Frequency: 119 KHz-135 KHz
4. Keep your credit cards and ATM cards away from RFID Mouse Pad to prevent the card's magnetic stripe from losing its efficiency.
5. Our RFID Mouse Pad will not erase any data in the memory stick. So don't worry if your memory stick is close to the inductive RFID mouse pad.

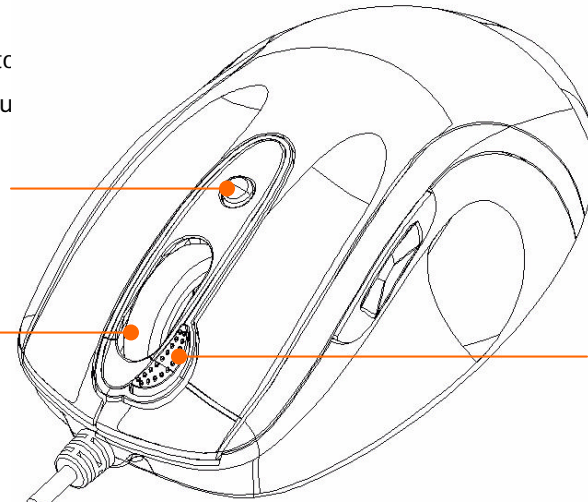
FUNCTION INTRODUCTION



With click the **6th button** to display a Office-jump menu, it provides you the marked **8** favors of combination command icons include **24** various Office command sets and **48** functions.

4-Way Scrolling

Tilt Wheel Technology Scrolls in 4 Directions for Greater Efficiency.




Just one simple click on “**2X Button**” straightly opens files and programs easily. No missing click no more double from now on! It saves times and improves your efficiency and it won't make you feel tiresome in office time.

INSTALLING THE 2T-OFFICE SOFTWARE

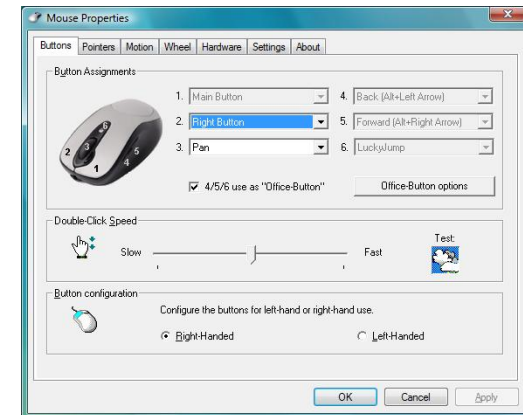
By installing the 2T- Office, it enables various functions provided for the Titl-Wheel and buttons.

STEP ONE: HOW TO INSTALL 2T- OFFICE


(*** For Win9x, Win2000, WinME, WinXP(X64),Win2003(X64),Vista X86)

1. MUST: Please uninstall any previous mouse driver before installing the 2T Office
2. MUST: Make sure you have completely finished setting up your mouse pad and mouse
3. Insert the included Compact Disc (CD) into your CD-ROM
4. Choose your mouse model and Click "Install Driver"
5. Follow the on screen instruction to complete your installation
6. Restart your computer after the driver has been installed
7. You will see a mouse icon "  " appear on the bottom

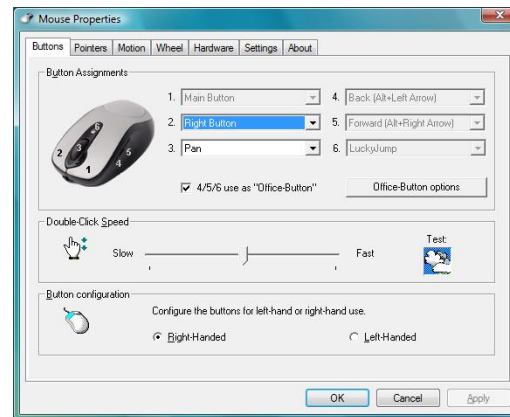
right of your task bar (near the clock area)



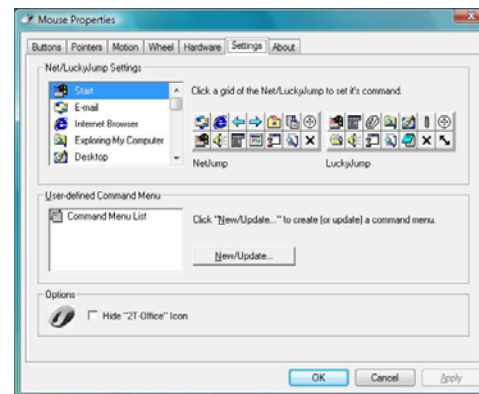
Mouse Properties Window (figure 1.1)

8. Double click on the mouse icon "  " will bring you the mouse property [image: Mouse Properties Window (figure 1.1)]
9. If the mouse image appears in the mouse properties menu looks exactly the same as the mouse on hand, then this means that you have successfully installed the 2T Office_driver

STEP TWO: HOW TO PROGRAM YOUR MOUSE BUTTONS



MOUSE PROPERTY



- Open your Mouse Properties.

First Tab: Button

Section I: Button Assignment

1. The mouse image that appears in the first section is a key to numbers listed to the right.

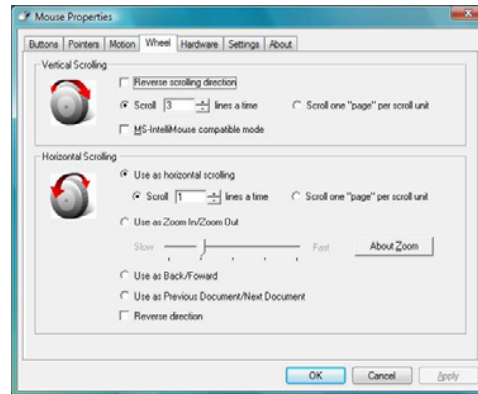
For example, # 1 button has been assigned as "Main Button" by default and it's not programmable.

2 button has been assigned as "Right Button" which works as right click for your mouse

3 button has been assigned as "Pan" function by default. It's also a Titl-Wheel if you scroll it. Also, # 3¹ Titl-Wheel button can be using as a "Net/LuckyJump", you need to open the Mouse Properties window and select the Button tab as left image shown. Then assign Net/LuckyJump in 3rd wheel button command. You also can use "Setting" to update the command list of Net/LuckJump. Press the wheel button, it will show up NetJump or LuckyJump screen which shows 14 commonly used tasks as for convenient shortcut.

#4 、 #5 buttons can be set as either regular programmable buttons or Office-Button functions. The 4th and 5th as the coupling button to makes shortcut command from Office-jump such as “OPEN, CLOSE”; “DELETE, REPLY”, “ZOOM IN, ZOOM OUT”...etc. which may be easily changed by one click on the 6th OfficeJump button.

STEP THREE: TITL-WHEEL SETTINGS & PREFERENCES



Titl-Wheel is the fourth tab appears in your mouse properties. There are 4 Quick functions in the “Horizontal Scrolling/Zoom” section:

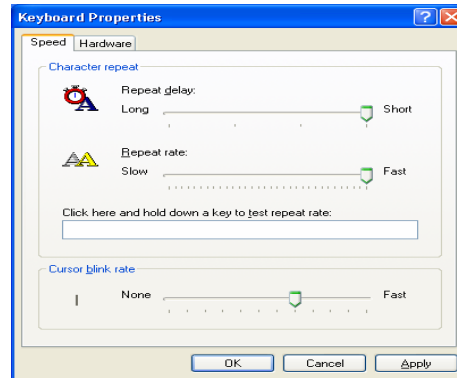
- 1.Zoom In / out function: adjust the wheel speed in Titl-Wheel, Click on the “About Zoom” tab, you can check the latest zoom driver with the web link information as provided.
- 2.Use as horizontal scrolling
- 3.Backward / Forward the page
- 4.Previous / Next Document

Section II: Double-Click Speed

Adjust your double-click speed

Section III: Button Configuration

If you select “Left-Handed”, your Main Button will be #2 button.



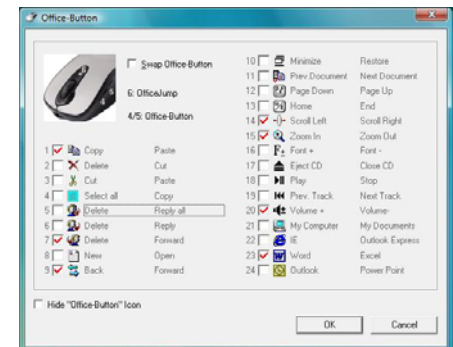
Keyboard Property

Before we go further to setting up your mouse buttons with game commands, we want to make sure your keyboard properties has the character repeat setting correct. Follow the steps below to get to Keyboard Properties:

- 1) Go to Control Panel
- 2) Click on Keyboard
- 3) For Repeat Delay: Most right (SHORT)
- 4) For Repeat Rate: Most right (FAST)
- 5) Apply >> OK

STEP FOUR: LEARN HOW TO USE THE “OFFICE-BUTTON OPTIONS”



1. There are 2 ways to open the “Office-Button” menu (right)
 - Click the “Office-Button Option” in the Mouse Properties
 - Click 6th **Button** located on your physical Mouse Body and will bring you the small picture:
2. you will see the Office Button menu like the figure on the right big image(**Office-Button menu**)
3. There are total of 24 selections in the Office-Button menu. You may choose up to maximum of 8 selections at a time.





Office-Button menu

STEP FIVE : EXPERIENCE THE MOUSE WITH DIFFERENT APPLICATIONS


When you are in Microsoft Outlook

After selected Office command set No.5 - Delete-Reply All . You can press 6th button to delete all garbage mail, or you can press 7th button to reply all. By using Office 8K Mouse, you can instantly read all your email messages and manage your outlook in a second. Or you can select No.15 - Zoom In- \Zoom out  to enlarge your email font size to match your eyesight needs


When you are in Microsoft Word

After selected Office Command set No.1 - Copy-Paste . You can adjust your paragraph length or edit sentences with simply two clicks. Instead of looking for copy icon and paste icon in the MS Word or Ctrl+C and Ctrl+V on the Keyboard. Or you can select No.15 - Zoom In- \Zoom out  to enlarge the page view size to match your eyesight needs.

When you are in Microsoft Excel

After selected Office command set No.14 - Scroll left-Scroll right . You can edit your wide spreadsheet in a second with such a handful function

When you are in Photoshop, Illustrator, Pro-E or other applications

After selected Office Command Set No.15 - Zoom In- \Zoom out , you can enlarge or shrink the image size whether to do some editing to the image or just to view the image more clearly with just two clicks.

More than 100 useful applications are supported with our “Zoom in-Zoom out” command set

There are so many different computer applications that provides zoom in and out functions. However, each of these various applications uses different ways to execute the Zoom function, which can be difficult to neither learn nor remember the proper way in performing the Zoom functions. Now, with A4Tech Zoom in and out function, whether you are an Artist, Designer or Office user, you can easily press the two zoom buttons to interactive with more than hundreds of applications. We integrated and standardized different Zoom commands into our two office fingertips, and

this function can be use in all Windows applications that use Zoom-supported functions.

TECH SUPPORT

For tech support, please visit our website at <http://support.a4tech.com/> or email us at support@a4tech.com

Federal Communication Commission Interference Statement

The equipment has been tested and found to comply with the limits for Class B Digital Device, pursuant to part 15 of the FCC Rules. These limits are designed to provide reasonable protection against harmful interference in a residential installation. This equipment generates, uses and can radiate radio frequency energy and, if not installed and used in accordance with the instruction, may cause harmful interference to radio communication. However, there is no guarantee that interference will not occur in a particular installation. If this equipment does cause harmful interference to radio or television reception, which can be determined by turning the equipment off and on, the user is encouraged to try to correct the interference by one or more of the following measures:

- Reorient of relocate the receiving antenna.
- Increase the separation between the equipment and receiver.
- Connect the equipment into an outlet on a circuit different from that to which the receiver is connected.
- Consult the dealer or an experienced radio/TV technician for help.

THIS DEVICE COMPLIES WITH PART 15 OF THE FCC RULES. OPERATION IS SUBJECT TO THE FOLLOWING TWO CONDITIONS: (1) THIS DEVICE MAY NOT CAUSE HARMFUL INTERFERENCE AND (2) THIS DEVICE MUST ACCEPT ANY INTERFERENCE RECEIVED, INCLUDING INTERFERENCE THAT MAY CAUSE UNDESIRE OPERATION.

Caution: Any changes or modifications not expressly approved by the party responsible for compliance could void the user's authority to operate this equipment.