



MeetingMan

Wireless Mouse

User Manual

Model: G10-690F

www.a4tech.com

THIS DEVICE COMPLIES WITH PART 15 OF THE FCC RULES. OPERATION IS SUBJECT TO THE FOLLOWING TWO CONDITIONS: (1) THIS DEVICE MAY NOT CAUSE HARMFUL INTERFERENCE AND (2) THIS DEVICE MUST ACCEPT ANY INTERFERENCE RECEIVED, INCLUDING INTERFERENCE THAT MAY CAUSE UNDESIRE OPERATION.

Federal Communications Commission Requirements

The equipment has been tested and found to comply with the limits for Class B Digital Device, pursuant to part 15 of the FCC Rules. These limits are designed to provide reasonable protection against harmful interference in a residential installation. This equipment generates uses and can radiate radio frequency energy and, if not installed and used in accordance with the instruction, may cause harmful interference to radio communication. However, there is no guarantee that interference will not occur in a particular installation. If this equipment does cause harmful interference to radio or television reception, which can be determined by turning the equipment off and on, the user is encouraged to try to correct the interference by one or more of the following measures:

- Reorient of relocate the receiving antenna.
- Increase the separation between the equipment and receiver.
- Connect the equipment into an outlet on a circuit different from that to which the receiver is connected.
- Consult the dealer or an experienced radio/TV technician for help.

THE CHANGES OR MODIFICATIONS NOT EXPRESSLY APPROVED BY THE PARTY RESPONSIBLE FOR COMPLIANCE COULD VOID THE USER'S AUTHORITY TO OPERATE THE EQUIPMENT.

This device complies with Part 15 of the FCC Rules. Operation is subject to the following two conditions:

- (1) This device may not cause harmful interference, and receiver.
- (2) This device must accept any interference received, including interference that may cause undesired operation.

FCC Radiation Exposure Statement

The equipment complies with FCC radiation exposure limits set forth for uncontrolled equipment and meets the FCC radio frequency (RF) Exposure Guidelines in Supplement C to OET65. The equipment has very low levels of RF energy that it is deemed to comply without testing of specific absorption ratio (SAR).

1. Hardware Installation

1). Connect the 10-Link receiver

Take out the 10-Link receiver from bottom of the mouse and connect it to your computer or Notebook.

Notes:

1. If you are using the receiver in a long range meeting room or there is strong wireless conflicts nearby, adopting the receiver with a USB extension cable to keep it away from the computer or any interfering sources.

2. Connect receiver on the same side with the mouse, it may avoid potential wireless conflicts from the notebook computer.

2). Insert the batteries

Push down the mouse cover to open the battery cover and insert the supplied batteries. Please make sure the positive (+) and negative (-) ends of the battery match the polarity indicators inside the battery compartment.

3). Turn on your Mouse

Push the power switch to ON position and turn on your mouse. >>Then LED light at the bottom of the mouse is on immediately.



2. Software Installation (Note: The software is applicable to Windows 2000/ XP/ 2003/ Vista/ Windows 7)

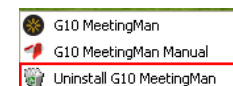
The G10 MeetingMan offers 2 flexible ways to install the driver, Normal Installation and Mobile Execution. The MeetingMan main program has a special feature that it can be executed directly without the need to install the software to Windows system. This is convenient when you are using a public computer and installing mouse driver to the system is prohibited or restricted. In such circumstances, you do not need to install the mouse driver, but just run the MeetingMan's main program directly from your storage device, e.g., a memory stick.

Normal Installation

- 1). Uninstall any mouse software on your system.
- 2). Insert enclosed CD to start installation and follow the on-screen instructions to finish the software installation. You may manually double click the "auto-run" program if execution does not automatically start.
- 3). The shortcut icon "🌀" will appear on your desktop screen, and then you have successfully installed the software. (Otherwise, installation is failed and you have to remove the software and re-install.)

To remove the driver, follow the steps:

Go to START>> PROGRAMS >> A4TECH Software >> "G10 MeetingMan" >> "Uninstall G10 MeetingMan, see figure on the right.



Mobile Execution:

You may copy and store the Mobile Edition files to your storage device, e.g., a memory stick, and plug it into any public systems to execute the Mobile Edition directly without installation. Or, you may copy all the files to the system, and then run the Mobile Edition main program

directly. This is convenient when you are using a public computer in the school or net bar, where installation any new program is prohibited or restricted.

Usage:

- 1). Copy all the files in the folder “G10” to your memory stick, and if needed, copy the files to the public system.
- 2). Double-click the icon to run Mobile Edition.exe



Mobile Edition.exe

(1) Knowing the G10 MeetingMan Software

The basic principles and design concepts of G10 MeetingMan

Before you are getting started to use this product, it is vital to understand the basic principles and design concepts of MeetingMan.

For each of MeetingMan’s script file, it will contain 5 different working modes, and each working mode can setup 7 buttons on the mouse with various functionalities. Those preset modes can be accessed by pressing the “mode-shift” button, and each button’s functionality can be activated by clicking the appropriate mouse button according to various applications. Thus, it turns a simple mouse into a very unique and powerful tool with individual’s innovation.

For instance, there are 5 preset working modes available for Office, TutorPen Meeting, Open file, LaserPointer Meeting and Gaming respectively, and after the MeetingMan software being installed, those 5 working modes can be shifted using a “mode-shift” button and make your jobs well done effortlessly!

Functions	Descriptions	Figures
-----------	--------------	---------

□. Mode Name/Select

Click on “Mode Name/Select” on the Main Menu, the mode setup screen will pop up as shown on the right.

You may tick off the modes you would not need temporarily from bottom to top order, or tick the mode you need from top to bottom order.

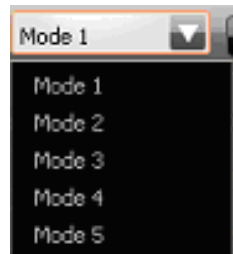
You may enter a new mode name on the blank, or edit existing mode names.



□. Selected Mode to Edit

It displays the current mode number in editing. You may select other mode numbers if needed.

There are 5 modes you can select to edit; with each mode you can define a number of new button settings. Remember to click “Apply” on the main menu to save the new settings to the receiver before taking effect.



③. Mode Name

The current mode name in editing. You may edit the mode name as described in the “1.Mode Name/Select” section.



④. Default

Click the "Default" a reminder will pop up as shown on the right. Click "OK" will resume all the buttons to the original settings, or click "Cancel" to exit the screen without any change.



(2) Button Settings and Relevant Functions

Functions	Descriptions
Button Settings	Click any “button definition area” on the main menu; you will see the function listing as shown on the right. According to your preference, you may select one of them as the button setting. You also can enter a short description on the “Description of reminder” area, which will be displayed on the screen when it is activated as the reminder.
No Setting	There is no button setting being defined.
Keyboard	You may setup the mouse button to simulate a keyboard's keystroke, or a key combination with "Win", "Ctrl", "Shift" and "Alt", then followed with any keystroke on the keyboard, and then assign it to the designated mouse button.
Mouse	Except mouse left button, you may setup any of mouse buttons to be one of "mouse left button, mouse right button, mouse middle button, mouse 4th button, mouse 5th button, wheel up and wheel down".
Open a File	<p>One click to open a program file or a document. You may setup any of mouse buttons of 2, 3, 4, 5, 6, wheel up(UP) and wheel down(DN) with “Open a File” function.</p> <p>Usage:</p> <ol style="list-style-type: none"> 1). Select “Open a file” from the pull-down button menu as figure 1 shows. 2). A screen of file listings will pop up as figure 2 shows. 3) Select one of the files that you would open it with the associated button and click “Open”. 4) Now you can see the file you selected has been assigned to the button. 5) Click “Apply” to save the new button setting.

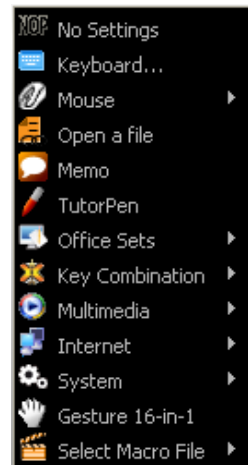


Figure 1

Example:

While in the session of a meeting or teaching, it is embarrassing to keep others waiting due to searching for a document, or look up for a program or a shortcut. With “Open a File” function, you may have better way to resolve this issue. By setting up each button in association to the document, program or shortcut, all you need to do is to shift to the mode and click each mouse button to open all the files instantly. You may also open an on-line reminder to check each mouse button association details.

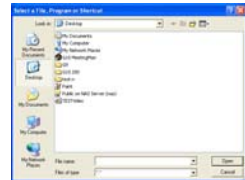


Figure 2

Memo

See below “Memo” section in more details.

One click to open the Memo screen and list out all the current button settings as the reminder. You may setup any of mouse buttons of 2, 3, 4, 5, 6, wheel up(UP) and wheel down(DN) with “Memo” function.

Usage:

- 1). Select “Memo” from the pull-down button menu of G10 MeetingMan main menu as figure 3 shows.
- 2). Click “Apply” to save button setting.

Example:

This function is useful during the session of a meeting or teaching, when you are not very sure which button is associated with the function you need.

Click the “Memo” button will bring the “Memo” screen as figure 4 shows. Now you can check each button setting and activate them immediately.

For instance, the teacher can open all the handout documents in seconds by clicking the button in association with the mouse buttons.

The Memo function is available for mouse button 2, 3, 4, 5, 6, Wheel up(UP) and Wheel down (DN).



Figure 3



Figure 4

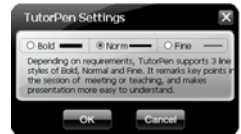
Office Sets	<p>You may setup any one of Office command sets such as: “Zoom In, Zoom Out, Paste Text, Double Click and Treble Click”to the mouse buttons.</p> <p>Zoom In/Out : One click to perform zoom in or zoom out function, applicable to CAD, ACDSee, Windows or text editing programs.</p> <p>Paste Text : One click to perform “Select, Copy & Paste” texts, it turns office jobs can never be so simple.</p>
Key Combination	Quick access to Office commands of key combinations, such as: Cut, Copy, Paste, Delete, Search, Select All, Redo, Undo, New File, Open File, Save File, Print...etc.
Multimedia	Quick access to Multimedia commands, such as: Media Player (Open), Previous, Next, Stop, Play/Pause, Mute, Volume+, Volume-...etc.
Internet	Quick access to usually used Internet commands, such as: Backward, Forward, Stop, Refresh, Search, My Favorite, Web Browser, E-mail...etc.
System	Quick access to Windows commands, such as: Open Calculator, Open My Computer, Sleep, Power Off...etc.
Gesture 16-in-1	<p>This 16-in-1 mouse utility offers 16 directions to draw the lines with the mouse and the preset commands will be executed immediately. Note that this gesture function is only available for mouse button □ and □. See more details on the Gesture 16-in-1 section.</p>
LaserPointer (By Model)	The LaserPointer is only available by models, if your model does not have LaserPointer, please use TutorPen instead. (Note that the LaserPointer switch will still in working even when the computer is power off, remember to switch off the mouse power on your long journey)



TutorPen This TutorPen function is available for mouse button 2,3,4,5, and 6.

Usage:

Press "Mode Shift " button to switch to Mode 2, then press and hold the mouse 6th button to draw lines. You can double-click on the same button to erase lines you just drew, triple-click on the same button will erase all lines on the screen. You can set line width and color by left-clicking the mouse on "1" at the right-down corner of the system tray and select "TutorPen Settings" as shown.



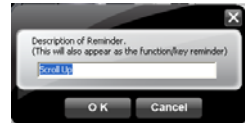
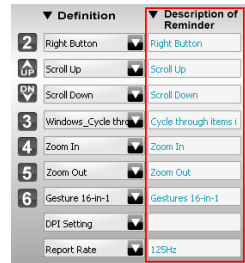
Red color will be used as default if you are using the TutorPen alone, and Red, Blue, Green, Orange and Purple colors will be used in the order for multiple users.

Unlike laser pointer's light point, which is difficult to trace, the TutorPen offers a handy tool to remark key points and catches more attention. And with individual line color and width, it makes identification within the attendees can never be so clear.

Select Macro File There are many useful macro functions you may choose from, including commands for PowerPoint(PPT) / Media Center Edition(MCE) / Gaming(CS) ...etc. They are backward compatible with X7 Oscar file format, and can be downloaded from the website: <http://www.x7.cn>.

⑥
Description
of Reminder

Click the Description of Reminder area on the main menu, a reminder screen will appear as shown on the right. Enter the reminder description, which will be displayed on the right-down corner of your screen as the key setting reminder.



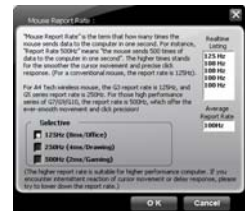
DPI Setting

Customizable and independent 2,000 DPI resolution for each X and Y axes. G10 MeetingMan offers customizable and independent resolution for each X and Y axes that best suits various LCD resolutions, in particular, it is crucial for some game plays.



Report Rate Mouse Report Rate is the term that how many times the mouse sends data to the computer in one second. For instance, "Report Rate 500Hz" means "the mouse sends 500 times of data to the computer in one second". The G10 MeetingMan offers 3 report rates, e.g., 125Hz, 250Hz and 500Hz respectively. The higher times stands for the smoother the cursor movement and precise click response, especially suitable for game play, which requires high speed and quick response. (For a conventional mouse, the report rate is 125Hz). For the 5 working modes that MeetingMan offers, the report rates are preset according to various applications, as shown below:

Mode No.	Report Rate	Power Consumption	Applications
Mode 1: Office	125 Hz	Low	Presentation
Mode 2: TutorPen Meeting	125 Hz	Low	Meeting/Teaching
Mode 3: Open File	125 Hz	Low	Meeting/Teaching
Mode 4: LaserPointer Meeting	125 Hz	Low	Presentation
Mode 5: Gaming	250 Hz	High	Game Plays



G10 MeetingMan is A4Tech's latest innovation. According to various applications, the bandwidth is divided into 3 report rate levels:

1X bandwidth: USB report rate is 125Hz, suitable for office and general users, power consumption is the lowest.




2X bandwidth: USB report rate is 250Hz, suitable for CAD users, power consumption is normal.

4X bandwidth: USB report rate is 500Hz, suitable for heavy-duty game players, power consumption is high.



Apply There is 48K on-board memory in the receiver of G10 MeetingMan; click "Apply" will download the new settings to receiver before it is taking effect.

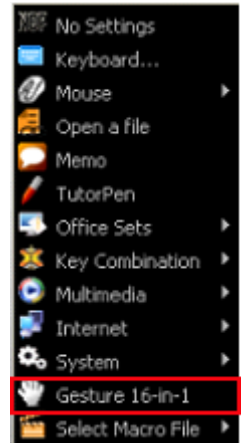


(3) Gesture 16-in-1

On the button definition area of Main menu, click “” of button  or , you will see the “Gesture 16-in-1” on the function listing as shown on the right.

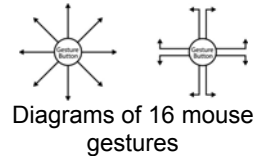
Select “Gesture 16-in-1 Setting” from the listing; the setup screen will pop up as shown on the right.

The “Gesture 16-in-1” offers customizable 16 functions in 1 click with gesture button. You may setup 16 most-frequently-used commands to the Gesture buttons  or  from 6 categories, more than 30 commands, including Keyboard, Mouse, Hyperlink, Office, Text, Multimedia, Internet and Key Setting Reminder. Using the mouse to draw the lines as any of 16 preset directions, the corresponding command will be executed immediately. It adds powerful and handy tools in Windows operation, and increases your working efficiency dramatically.

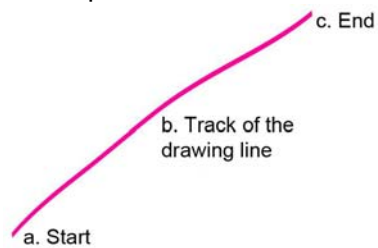


Usage:


Press and hold the gesture button to draw any of 16 lines and directions as shown on the right, then release the button. The corresponding commands will be executed immediately, including Keyboard, Mouse, Hyperlink, Office, Text, Multimedia, Internet and Key Setting Reminder, which can be preset and store to your receiver memory.

**Example 1:**

Using  as "Zoom In" command by default, when you are viewing a picture with ACDSee, or browsing a PPT file in the Office, or Reading a PDF file...etc, just pressing the "Gesture Button" and draw the line as shown below, then release the button, the picture or the document will be zoomed in immediately.



a. Start: Press the "Gesture Button"


b. Track of the drawing line: Draw the line as the  arrow direction.



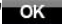

c. End: Release the "Gesture Button"

d. Then the picture has been zoomed in.

Example 2:

See the contrast in EXCEL after drawing the line.

Now let's take " as example to show you how to use these functions :

1. Select " icon to represent "Zoom In" as shown: 
2. Click " to close the setup screen.
3. Click " to save to receiver's memory.
4. Draw the line in Excel.

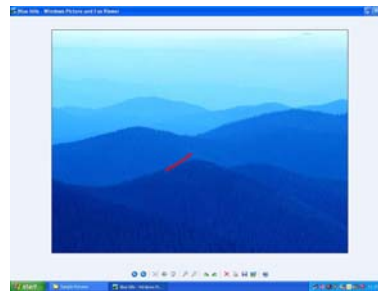
Original

	A	B	C
1			
2			
3		Hello	
4			
5			
6			

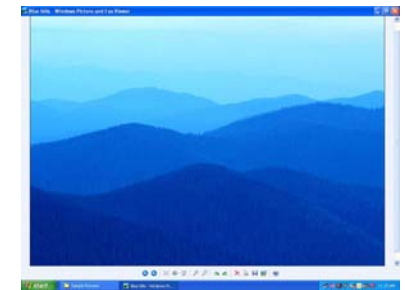
After drawing the line, the column has been enlarged

	A	B	C
1			
2			
3		Hello	
4			
5			
6			

4. Draw the line in Windows Picture and Fax Viewer.
Original



After drawing the line, the column has been enlarged



(4) Task Listing of G10 MeetingMan

There are 2 ways will display the working mode number when it is shifted:

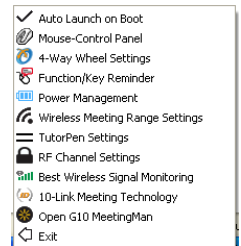
Display 1: When the mode is shifted, the memo screen will be displayed on the screen center to remind current mode number information as shown on the right.



Display 2: Meanwhile, the small MeetingMan icon on the system tray will shift with mode numbers ①②③④⑤. For example, ② implies current working mode is in “Mode 2, TutorPen Meeting” as shown on the right.



Left or Right click on the icon "②" at the right-down corner of your system tray, you will see “G10 MeetingMan Task Listing” pops up as shown on the right.



Following will brief each task and its functionality.

1. Auto Launch on Boot:

If this task is selected, the G10 MeetingMan will be auto-executed when the system boots up.

✓ Auto Launch on Boot