



MeetingMan

TutorPen/ LaserPointer 20m Wireless Mouse

User Manual

Model: G10-770L

www.a4tech.com

THIS DEVICE COMPLIES WITH PART 15 OF THE FCC RULES. OPERATION IS SUBJECT TO THE FOLLOWING TWO CONDITIONS: (1) THIS DEVICE MAY NOT CAUSE HARMFUL INTERFERENCE AND (2) THIS DEVICE MUST ACCEPT ANY INTERFERENCE RECEIVED, INCLUDING INTERFERENCE THAT MAY CAUSE UNDESIRE OPERATION.

Federal Communications Commission Requirements

The equipment has been tested and found to comply with the limits for Class B Digital Device, pursuant to part 15 of the FCC Rules. These limits are designed to provide reasonable protection against harmful interference in a residential installation. This equipment generates uses and can radiate radio frequency energy and, if not installed and used in accordance with the instruction, may cause harmful interference to radio communication. However, there is no guarantee that interference will not occur in a particular installation. If this equipment does cause harmful interference to radio or television reception, which can be determined by turning the equipment off and on, the user is encouraged to try to correct the interference by one or more of the following measures:

- Reorient or relocate the receiving antenna.
- Increase the separation between the equipment and receiver.
- Connect the equipment into an outlet on a circuit different from that to which the receiver is connected.
- Consult the dealer or an experienced radio/TV technician for help.

THE CHANGES OR MODIFICATIONS NOT EXPRESSLY APPROVED BY THE PARTY RESPONSIBLE FOR COMPLIANCE COULD VOID THE USER'S AUTHORITY TO OPERATE THE EQUIPMENT.

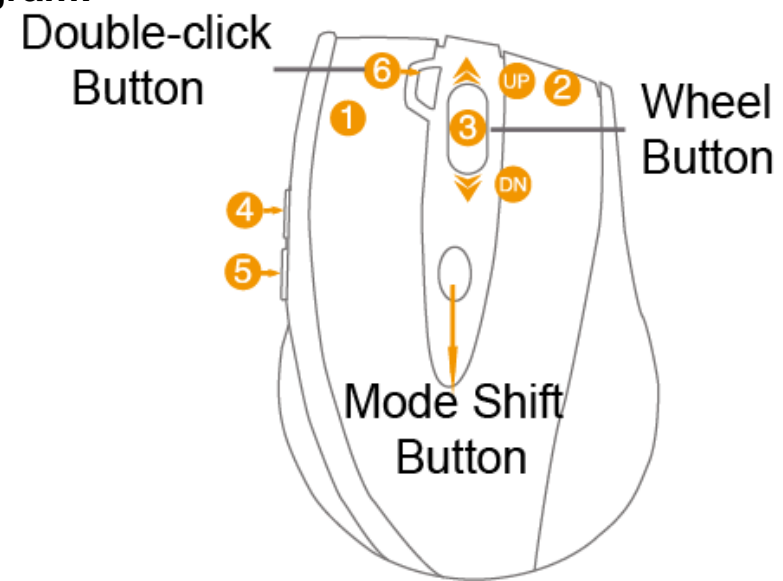
This device complies with Part 15 of the FCC Rules. Operation is subject to the following two conditions:

- (1) This device may not cause harmful interference, and receiver.
- (2) This device must accept any interference received, including interference that may cause undesired operation.

FCC Radiation Exposure Statement

The equipment complies with FCC radiation exposure limits set forth for uncontrolled equipment and meets the FCC radio frequency (RF) Exposure Guidelines in Supplement C to OET65. The equipment has very low levels of RF energy that it is deemed to comply without testing of specific absorption ratio (SAR).

Mouse Button Diagram:



1. Hardware Installation

1). Connect the 10-Link receiver

Take out the 10-Link receiver from bottom of the mouse and connect it to your computer or Notebook.

Notes:

1. If you are using the receiver in a long range meeting room or there is strong wireless conflicts nearby, adopting the receiver with a USB extension cable to keep it away from the computer or any interfering sources.

2. Connect receiver on the same side with the mouse, it may avoid potential wireless conflicts from the notebook computer.

2). Insert the batteries

Push down the mouse cover to open the battery cover and insert the supplied batteries. Please make sure the positive (+) and negative (-) ends of the battery match the polarity indicators inside the battery compartment.

3). Turn on your Mouse

Push the power switch to ON position and turn on your mouse. >>Then LED light at the bottom of the mouse is on immediately.



2. Software Installation (Note: The software is applicable to Windows 2000/ XP/ 2003/ Vista/ Windows 7)



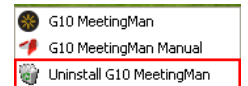
The G10 MeetingMan offers 2 flexible ways to install the driver, Normal Installation and Mobile Execution. The MeetingMan main program has a special feature that it can be executed directly without the need to install the software to Windows system. This is convenient when you are using a public computer and installing mouse driver to the system is prohibited or restricted. In such circumstances, you do not need to install the mouse driver, but just run the MeetingMan' s main program directly from your storage device, e.g., a memory stick.

Normal Installation

- 1). Uninstall any mouse software on your system.
- 2). Insert enclosed CD to start installation and follow the on-screen instructions to finish the software installation. You may manually double click the “auto-run” program if execution does not automatically start.
- 3). The shortcut icon "☀" will appear on your desktop screen, and then you have successfully installed the software. (Otherwise, installation is failed and you have to remove the software and re-install.)

To remove the driver, follow the steps:

Go to START>> PROGRAMS >>A4TECH Software >> "G10 MeetingMan" >> "Uninstall G10 MeetingMan, see figure on the right.



Mobile Execution:

You may copy and store the Mobile Edition files to your storage device, e.g., a memory stick, and plug it into any public systems to execute the Mobile Edition directly without installation. Or, you may copy all the files to the system, and then run the Mobile Edition main program directly. This is convenient when you are using a public computer in the school or net bar, where installation any new program is prohibited or restricted.

Usage:

- 1). Copy all the files in the folder “G10” to your memory stick, and if needed, copy the files to the public system.
- 2). Double-click the icon to run Mobile Edition.exe



Mobile Edition.exe

3. The G10 MeetingMan Main Menu:

Mode Name/Select:
Name a new mode or
select modes to use.

Mode Number:
Select a mode
number to edit.

Default:
Resume to default
settings.

Mouse Button Definition:
Display current mouse
button
settings or setup new settings
to mouse buttons.

Description of Reminder:
Enter short description here
for each button setting, which
will be displayed later as the
reminder on the screen.

Save new settings to
receiver and apply the new
settings immediately.



Main Menu of G10 MeetingMan


(1) Knowing the G10 MeetingMan Software

The basic principles and design concepts of G10 MeetingMan

Before you are getting started to use this product, it is vital to understand the basic principles and design concepts of MeetingMan.

For each of MeetingMan’s script file, it will contain 5 different working modes, and each working mode can setup 7 buttons on the mouse with various functionalities. Those preset modes can be accessed by pressing the “mode-shift” button, and each button’s functionality can be activated by clicking the appropriate mouse button according to various applications. Thus, it turns a simple mouse into a very unique and powerful tool with individual’s innovation.

For instance, there are 5 preset working modes available for Office, TutorPen Meeting, Open file, LaserPointer Meeting and Gaming respectively, and after the MeetingMan software being installed, those 5 working modes can be shifted using a “mode-shift” button and make your jobs well done effortlessly!

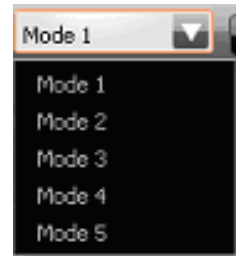
Functions	Descriptions	Figures
<div><input type="checkbox"/>. Mode Name/Select</div>	<div>Click on “Mode Name/Select” on the Main Menu, the mode setup screen will pop up as shown on the right.</div> <div>You may tick off the modes you would not need temporarily from bottom to top order, or tick the mode you need from top to bottom order.</div> <div>You may enter a new mode name on the blank, or edit existing mode names.</div>	<div></div>

❑. Selected Mode to Edit

It displays the current mode number in editing. You may select other mode numbers if needed.



There are 5 modes you can select to edit; with each mode you can define a number of new button settings. Remember to click “Apply” on the main menu to save the new settings to the receiver before taking effect.



③. Mode Name

The current mode name in editing. You may edit the mode name as described in the “1.Mode Name/Select” section.

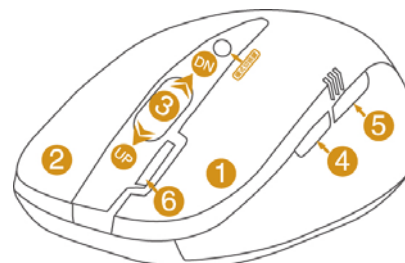


④. Default

Click the "Default" a reminder will pop up as shown on the right. Click "OK" will resume all the buttons to the original settings, or click "Cancel" to exit the screen without any change.



Functionality Listing of Mouse Buttons in Each Working Mode



Mouse Button Diagram

Mouse Button	Mode 1	Mode 2	Mode 3	Mode 4	Mode 3
	Office	TutorPen Meeting	Open file	LaserPointer Meeting	Gaming
<input type="checkbox"/>	Right Button	From Current Slide or Exit Slide	Right Button	From current slide or Exit Slide	Right Button
<input type="checkbox"/>	Windows Switch	Start or Exit Slide Show	Open PPT File & Example	Start or Exit Slide Show	Middle Button
<input type="checkbox"/>	4 th Button	Page Up	Open Text File & Example	Page Up	4 th Button
<input type="checkbox"/>	5 th Button	Page Down	Open Spreadsheet File & Example	Page Down	5 th Button
<input type="checkbox"/>	16-in-1	TutorPen	Memo	LaserPointer(By Model)	3X Fire
UP	Scroll Up	Scroll Up	Scroll Up	Scroll Up	Scroll Up
DN	Scroll Down	Scroll Down	Scroll Down	Scroll Down	Scroll Down
DPI	1000DPI	1000DPI	1000DPI	1000DPI	1000DPI
Report Rate	125Hz(8ms)	125Hz(8ms)	125Hz(8ms)	125Hz	250Hz

(2) Button Settings and Relevant Functions

Functions	Descriptions
□.Button Settings	Click any “button definition area” on the main menu; you will see the function listing as shown on the right. According to your preference, you may select one of them as the button setting. You also can enter a short description on the “Description of reminder” area, which will be displayed on the screen when it is activated as the reminder.
No Setting	There is no button setting being defined.
Keyboard	You may setup the mouse button to simulate a keyboard's keystroke, or a key combination with "Win", "Ctrl", "Shift" and "Alt", then followed with any keystroke on the keyboard, and then assign it to the designated mouse button.
Mouse	Except mouse left button, you may setup any of mouse buttons to be one of "mouse left button, mouse right button, mouse middle button, mouse 4th button, mouse 5th button, wheel up and wheel down".
Open a File	<p>One click to open a program file or a document. You may setup any of mouse buttons of 2, 3, 4, 5, 6, wheel up(UP) and wheel down(DN) with “Open a File” function.</p> <p>Usage:</p> <ol style="list-style-type: none"> 1). Select “Open a file” from the pull-down button menu as figure 1 shows. 2). A screen of file listings will pop up as figure 2 shows. 3) Select one of the files that you would open it with the associated button and click “Open”. 4) Now you can see the file you selected has been assigned to the button. 5) Click “Apply” to save the new button setting.

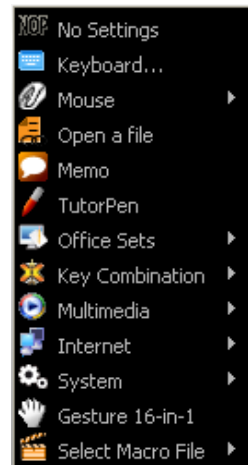


Figure 1

Example:

While in the session of a meeting or teaching, it is embarrassing to keep others waiting due to searching for a document, or look up for a program or a shortcut. With “Open a File” function, you may have better way to resolve this issue. By setting up each button in association to the document, program or shortcut, all you need to do is to shift to the mode and click each mouse button to open all the files instantly. You may also open an on-line reminder to check each mouse button association details.

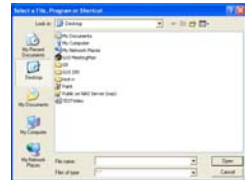


Figure 2

Memo

See below “Memo” section in more details.

One click to open the Memo screen and list out all the current button settings as the reminder. You may setup any of mouse buttons of 2, 3, 4, 5, 6, wheel up(UP) and wheel down(DN) with “Memo” function.

Usage:

- 1). Select “Memo” from the pull-down button menu of G10 MeetingMan main menu as figure 3 shows.
- 2). Click “Apply” to save button setting.

Example:

This function is useful during the session of a meeting or teaching, when you are not very sure which button is associated with the function you need.

Click the “Memo” button will bring the “Memo” screen as figure 4 shows. Now you can check each button setting and activate them immediately.

For instance, the teacher can open all the handout documents in seconds by clicking the button in association with the mouse buttons.

The Memo function is available for mouse button 2, 3, 4, 5, 6, Wheel up(UP) and Wheel down (DN).



Figure 3



Figure 4

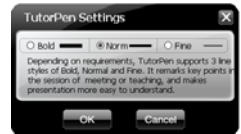
Office Sets	<p>You may setup any one of Office command sets such as: “Zoom In, Zoom Out, Paste Text, Double Click and Treble Click”to the mouse buttons.</p> <p>Zoom In/Out : One click to perform zoom in or zoom out function, applicable to CAD, ACDSee, Windows or text editing programs.</p> <p>Paste Text : One click to perform “Select, Copy & Paste” texts, it turns office jobs can never be so simple.</p>
Key Combination	Quick access to Office commands of key combinations, such as: Cut, Copy, Paste, Delete, Search, Select All, Redo, Undo, New File, Open File, Save File, Print...etc.
Multimedia	Quick access to Multimedia commands, such as: Media Player (Open), Previous, Next, Stop, Play/Pause, Mute, Volume+, Volume-...etc.
Internet	Quick access to usually used Internet commands, such as: Backward, Forward, Stop, Refresh, Search, My Favorite, Web Browser, E-mail...etc.
System	Quick access to Windows commands, such as: Open Calculator, Open My Computer, Sleep, Power Off...etc.
Gesture 16-in-1	<p>This 16-in-1 mouse utility offers 16 directions to draw the lines with the mouse and the preset commands will be executed immediately. Note that this gesture function is only available for mouse button □ and □. See more details on the Gesture 16-in-1 section.</p>
LaserPointer (By Model)	The LaserPointer is only available by models, if your model does not have LaserPointer, please use TutorPen instead. (Note that the LaserPointer switch will still in working even when the computer is power off, remember to switch off the mouse power on your long journey)



TutorPen This TutorPen function is available for mouse button 2,3,4,5, and 6.

Usage:

Press "Mode Shift " button to switch to Mode 2, then press and hold the mouse 6th button to draw lines. You can double-click on the same button to erase lines you just drew, triple-click on the same button will erase all lines on the screen. You can set line width and color by left-clicking the mouse on "1" at the right-down corner of the system tray and select "TutorPen Settings" as shown.



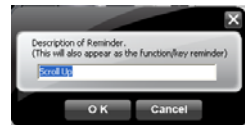
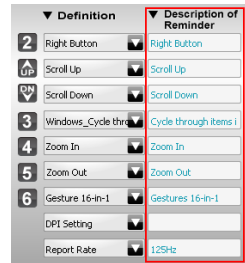
Red color will be used as default if you are using the TutorPen alone, and Red, Blue, Green, Orange and Purple colors will be used in the order for multiple users.

Unlike laser pointer's light point, which is difficult to trace, the TutorPen offers a handy tool to remark key points and catches more attention. And with individual line color and width, it makes identification within the attendees can never be so clear.

Select Macro
File There are many useful macro functions you may choose from, including commands for PowerPoint(PPT) / Media Center Edition(MCE) / Gaming(CS) ...etc. They are backward compatible with X7 Oscar file format, and can be downloaded from the website: <http://www.x7.cn>.

⑥
Description
of Reminder

Click the Description of Reminder area on the main menu, a reminder screen will appear as shown on the right. Enter the reminder description, which will be displayed on the right-down corner of your screen as the key setting reminder.



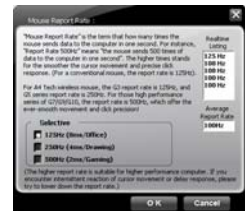
□. DPI
Setting

Customizable and independent 2,000 DPI resolution for each X and Y axes.
G10 MeetingMan offers customizable and independent resolution for each X and Y axes that best suits various LCD resolutions, in particular, it is crucial for some game plays.



- . Report Rate Mouse Report Rate is the term that how many times the mouse sends data to the computer in one second. For instance, "Report Rate 500Hz" means "the mouse sends 500 times of data to the computer in one second". The G10 MeetingMan offers 3 report rates, e.g., 125Hz, 250Hz and 500Hz respectively. The higher times stands for the smoother the cursor movement and precise click response, especially suitable for game play, which requires high speed and quick response. (For a conventional mouse, the report rate is 125Hz). For the 5 working modes that MeetingMan offers, the report rates are preset according to various applications, as shown below:

Mode No.	Report Rate	Power Consumption	Applications
Mode 1: Office	125 Hz	Low	Presentation
Mode 2: TutorPen Meeting	125 Hz	Low	Meeting/Teaching
Mode 3: Open File	125 Hz	Low	Meeting/Teaching
Mode 4: LaserPointer Meeting	125 Hz	Low	Presentation
Mode 5: Gaming	250 Hz	High	Game Plays



G10 MeetingMan is A4Tech's latest innovation. According to various applications, the bandwidth is divided into 3 report rate levels:

1X bandwidth: USB report rate is 125Hz, suitable for office and general users, power consumption is the lowest.




2X bandwidth: USB report rate is 250Hz, suitable for CAD users, power consumption is normal.

4X bandwidth: USB report rate is 500Hz, suitable for heavy-duty game players, power consumption is high.



- . Apply There is 48K on-board memory in the receiver of G10 MeetingMan; click "Apply" will download the new settings to receiver before it is taking effect.

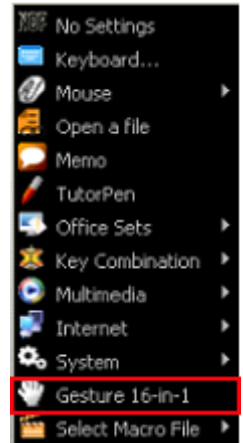


(3) Gesture 16-in-1

On the button definition area of Main menu, click “” of button  or , you will see the “Gesture 16-in-1” on the function listing as shown on the right.

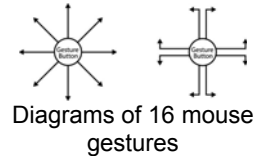
Select “Gesture 16-in-1 Setting” from the listing; the setup screen will pop up as shown on the right.


The “Gesture 16-in-1” offers customizable 16 functions in 1 click with gesture button. You may setup 16 most-frequently-used commands to the Gesture buttons  or  from 6 categories, more than 30 commands, including Keyboard, Mouse, Hyperlink, Office, Text, Multimedia, Internet and Key Setting Reminder. Using the mouse to draw the lines as any of 16 preset directions, the corresponding command will be executed immediately. It adds powerful and handy tools in Windows operation, and increases your working efficiency dramatically.

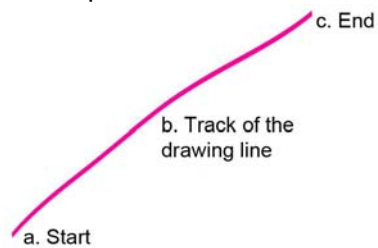


Usage:


Press and hold the gesture button to draw any of 16 lines and directions as shown on the right, then release the button. The corresponding commands will be executed immediately, including Keyboard, Mouse, Hyperlink, Office, Text, Multimedia, Internet and Key Setting Reminder, which can be preset and store to your receiver memory.

**Example 1:**

Using  as "Zoom In" command by default, when you are viewing a picture with ACDSee, or browsing a PPT file in the Office, or Reading a PDF file...etc, just pressing the "Gesture Button" and draw the line as shown below, then release the button, the picture or the document will be zoomed in immediately.



a. Start: Press the "Gesture Button"


b. Track of the drawing line: Draw the line as the  arrow direction.



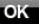

c. End: Release the "Gesture Button"

d. Then the picture has been zoomed in.

Example 2:

See the contrast in EXCEL after drawing the line.

Now let's take " as example to show you how to use these functions :

1. Select " icon to represent "Zoom In" as shown: 
2. Click " to close the setup screen.
3. Click " to save to receiver's memory.
4. Draw the line in Excel.

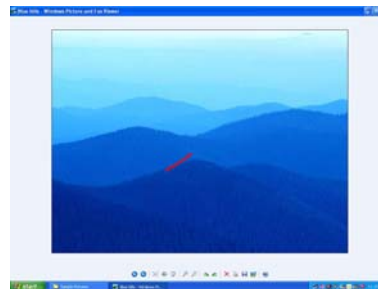
Original

	A	B	C
1			
2			
3		Hello	
4			
5			
6			

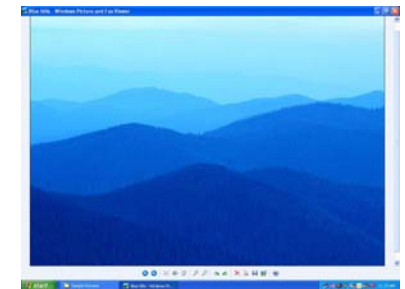
After drawing the line, the column has been enlarged

	A	B	C
1			
2			
3		Hello	
4			
5			
6			

4. Draw the line in Windows Picture and Fax Viewer.
Original



After drawing the line, the column has been enlarged



(4) Task Listing of G10 MeetingMan

There are 2 ways will display the working mode number when it is shifted:

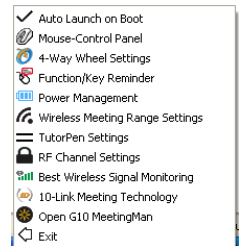
Display 1: When the mode is shifted, the memo screen will be displayed on the screen center to remind current mode number information as shown on the right.



Display 2: Meanwhile, the small MeetingMan icon on the system tray will shift with mode numbers ①②③④⑤. For example, ② implies current working mode is in “Mode 2, TutorPen Meeting” as shown on the right.



Left or Right click on the icon "②" at the right-down corner of your system tray, you will see “G10 MeetingMan Task Listing” pops up as shown on the right.



Following will brief each task and its functionality.

1. Auto Launch on Boot:

If this task is selected, the G10 MeetingMan will be auto-executed when the system boots up.

✓ Auto Launch on Boot

2. Mouse-Control Panel:

Select “Mouse-Control Panel” will open “Mouse Properties” setup screen of your Windows system, e.g., you may setup mouse pointers and other often -used mouse settings.



3. 4-way Wheel:

A. The 4-way Wheel is the latest scrolling technology. It splits working screen into 2 areas, A and B as shown on the right. Depending on cursor position, the wheel will perform vertical or horizontal scrolling. For instance, when the cursor locates within A area, the wheel will perform vertical scrolling, and when the cursor locates within B area, the wheel will perform horizontal scrolling. It saves tremendous works instead of pulling the scrollbars, especially when working with Excel spreadsheet.



B. In practice, you may click and move the Red split icon to change the ratio of A and B areas. You may perform Vertical and Horizontal scrolling by just moving the cursor in and out of A or B areas, which saves a lot of efforts than pulling Windows' scrollbars!

Note: If the option of "**Normal Wheel**" is selected, the wheel will perform as a normal mouse wheel, and “4-way Wheel” function won't be launched.

4. Function/Key Reminder:

You may setup “Function/Key Reminder” as shown on the right. The small “Radar” is the icon you may click and move to the position you wish to display the reminder screen.

5. Power Management:

Click the icon "2" at the right-down corner of your system tray and select "Power Management" to define wake-up modes and sleeping time. According to the stand-by status, the intelligent power-saving management supports "Slight, Little, Middle & Deep" 4 working modes. User may define the time interval to enter into the Deep Sleeping Mode, and 6 seconds enter into Deep Sleeping Mode after the PC is power off.

Note: Regardless the mouse in Deep Sleeping Mode, the laser pointer will remain in "working". Always switch off the mouse power when in the long journey to avoid laser pointer's light being turned on incidentally.

Note:

Light color mouse pads can save more power than deep color ones. 500Hz full speed in the gaming mode will consume much more power. Rechargeable batteries are recommended for intensive mouse users, and always turn-off the mouse power when long time not use.

Move to Wake Up:

This is convenient to awake the mouse, and it consumes 0.35mA current when in stand-by status.

Click to Wake Up:

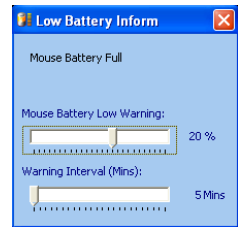
This requires a click to awake the mouse, yet it consumes as less as 0.03mA current in stand-by status.

Check Battery power:

Click "Check Power" in "power-saving management" to check the battery power status.

Low Battery Inform:

When the mouse power is low, Low Battery Inform page will pop up at the right corner of your screen to remind you to replace the batteries in time.



Special Note:

The laser pointer on your mouse requires higher power to function, if supplied voltage under 1.1 volts and the remaining power is less than 25%, it will not work properly. Replace with new batteries if needed.

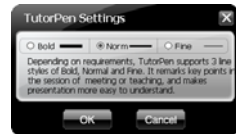
6. Wireless Working Range Setting:

You may setup wireless working ranging within 15~20 meters; the farther range needs to consume more power, and remember to resume to shorter range after the meeting.

In the circumstances that there is wireless conflict nearby or the meeting room is the huge one, adopting a USB extension cable for the receiver will improve and secure better communication quality. Refer to next page for more details.

7. TutorPen Setting:

Depending on requirements, TutorPen supports 3 line styles of Bold, Normal and Fine. It remarks key points in the session of a meeting or teaching, and makes presentation easier to understand. See more details on below “Setting up 5-color TutorPen” section.



8. RF Channel Setting:

Auto Channel Hopping:

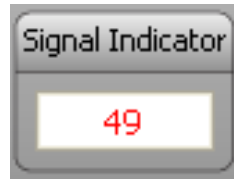
This is the G10 MeetingMan default setting. Applicable to single-alone user, or when there is no wireless interference nearby.

Channel-lock:

If more than one set of wireless Mice&KBs are used in the same site, you may perform "Channel-lock" to assign exclusive channel for each device so as to avoid "Auto Channel Hopping" wireless conflicts and get "Zero-lag" better performance.

Detect Receiving Signal Level:

Moving the mouse, the indicator will display current signal level. The less level value means the better receiving signal, value under 120 means the devices are working in good condition. The value may increase when working in a long range venue, or there is strong interference. Try different allocation of mouse and receiver till the best improvement is secured.



9. Wireless Signal Monitoring:

Search and Keep away from Wireless Conflicts:

If wireless mouse is not working smoothly due to wireless conflicts, use wireless signal monitoring to monitor and improve the signal level and get best improvements.

Detect Receiving Signal Level:

Moving the mouse, the indicator will display current signal level. The less level value means the better receiving signal, e.g., value under 120 means the devices are working in good condition. The value may increase when working in a long range venue, or there is strong interference. Try different allocation of mouse and receiver till the best improvement is secured.



Suggest Improvements:

1. Use a USB extension cable for the receiver and keep it away from the computer or any interfering sources. It is highly recommended to use it for the long range meeting venue or when there is strong wireless conflict nearby.
2. Plug receiver on the same side with the mouse, it may avoid potential wireless conflicts from the notebook computer.

10. 10-Link Meeting Technology:

Select “10-Link Meeting Technology” from the task listing will bring up the setup screen as shown on the right.

Effective Meeting:

10-Link Receiver is designed with memory, The “New Mice/KBs ID Pairing” program allows to link up to 5 sets of Mice&KBs to operate on the same computer with defined name. The “10-Link Meeting Management” program provides the best sharing of meeting to consolidate all member intelligences.

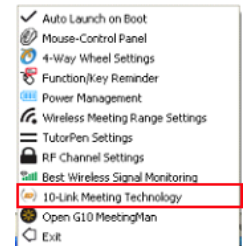


Portability:

The 10-Link Receiver is capable of linking 5 sets of Mice&KBs, you may leave 10-Link receiver installed on your notebook and use any paired A4Tech G10 products at home or in the office with the same receiver.

Note:

The 10-Link receiver is made in Blue color for better identification. The Black color receiver is a conventional receiver and will not support all the advanced features of 10-Link receiver. One computer only requires one 10-Link receiver, if more than one 10-Link receiver is used, a reminder screen will remind you to remove extra ones)

**New Mice/KBs ID Pairing:**

Click “New Mice/KBs ID Pairing” will start to add new mice and keyboards. The 10-Link, Blue-shelled receiver may works with up to 5 sets of mice and keyboards simultaneously. With each attendant a mouse in hand, it increases meeting efficiency and assures fruitful meeting results. See more details on below “New IDs for Mice/KBs” and “How to Add a New Device Using New Mice/KBs ID Pairing” sections.



10-Link Meeting Management:

In this section, you will be able to manage the 10-Link Meeting for each linked mouse and keyboard. Click “10-Link Meeting Management” will bring the management screen as shown on the right.



Management of Linked Mice and Keyboards:

From the screen, you may see the listing of linked mice and keyboards with their IDs and Names. You may tick or tick off the box to “Enable” or “Disable” the devices, or “Delete” them forever.

Display Options:

There are 3 display options you can choose how you would like to display the names. They are “Display with names”, “Display with color labels” and “None” to display.



1. New IDs for Mice/KBs:

After the pairing process is completed, you may give a new ID for the mouse or keyboard, which will be displayed on the screen right under the cursor position for easier identification. Or, “Unnamed” will be used if you leave it blank. You may choose to display “Names” or “Color Labels” as the display options.

In order to manage all the mice/KBs in good manners during the meeting, “Priority” will be used for the most-recently-used mouse. Others have to wait until the mouse priority is released and “Next Please” or a light-blue square label appears, before they can continue the session.

After the meeting is finished, un-tick to disable the mouse and keyboard that will not use, and you can tick to enable and add them without the need to perform “New Mice/KBs ID Pairing” again. If the mouse or keyboard is no longer needed, you may “Delete” them forever.

Note:

If the “Priority” is released, but there is no “Next Please”, none the green square label appears, there maybe one of the mice is sending out the signal to the receiver due to the desktop is not smooth, move it to a smooth place will get improvements.

It is recommended to use one mouse for mode and setting management in the meeting, and explain details to other members will ensure fruitful meeting results.



2. Setting up 5-color TutorPen:

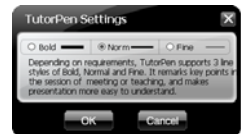
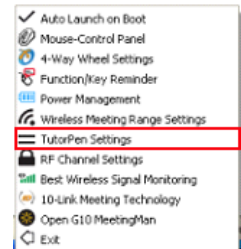
Press "Mode Shift" button to switch to Mode 2, then press and hold the mouse 6th button to draw lines. You can double-click on the same button to erase lines you just drew, triple-click on the same button will erase all lines on the screen. You can set line width and color by left-clicking the mouse on "🖊" at the right-down corner of the system tray and select "TutorPen Settings".

Red color will be used as default if you are using the TutorPen alone, and Red, Blue, Green, Orange and Purple colors will be used in the order for multiple users.

Unlike the laser pointer's light point is difficult to trace, the TutorPen offers 5 different line colors for each member to draw lines on the screen, it is easier to differentiate from each other and increases meeting efficiency dramatically. (Users may setup the line widths and colors according to their preference)


Special Note:

Each mouse and keyboard of G10 MeetingMan will have an exclusive ID code by default in the factory. Such ID code is derived randomly from 262,144 combinations. However, in case the ID codes duplicates, please send back the products for maintenance.



How to Add a New Device Using “New Mice/KBs ID Pairing”

Step 1.

1. Select “10-Link Meeting Technology” from the G10 MeetingMan Task Listing, the main screen of “10-Link Meeting Management” will pop up as shown on the right. (For better operation, you may need another mouse to perform ID pairing before the wireless mouse is applicable).
2. Click  button to start adding the new mouse or keyboard.



Step 1

Step 2.

Follow on-screen instructions to perform “ID Pairing” as shown on the right, click “Next” to continue.



Step 2

Step 3.

1. Press any key to wake up the mouse before “ID pairing” is performed.
2. Locate the power switch (Normally you can find it on the mouse bottom side).
3. Make sure the power switch is in OFF position and then switch it to ON position within 30 seconds. (If power switch is in ON position, switch it to OFF and back to ON position within 30 seconds).
4. After above procedure is completed, the mouse will start to perform pairing procedure with the receiver; wait for seconds, the next screen will pop up as shown after ID pairing is completed.



Step 3

Step 4.

After ID pairing is completed, move the mouse and reply YES if mouse moves fine, then click NEXT. In case the ID pairing fails, click “BACK” to repeat steps 2,3 and perform the ID pairing procedure again.



Step 4

Step 5.

After above ID pairing is completed, you may give a new name to the mouse according to your preference or just leave it blank to finish the ID pairing.

1. Click “OK” to complete the ID pairing.
2. If you need to perform another ID pairing for the new devices, click “New Mice/KBs ID Pairing” again and repeat above steps 2, 3, 4 to perform another ID pairing.



Step 5

After you have finished adding all the new mice and keyboards, click “10-Link Meeting Management” to manage the multiple mice and keyboards.



11. Open G10 MeetingMan:

Select “Open G10 MeetingMan” will open the main menu of G10 MeetingMan.



12. Exit:

Exit G10 MeetingMan software.



(5) Innovative GlassRun Technology (Low Power Consumption, High Performance Optical Engine)

The “GlassRun” is the new technology that it collects all the diffusion light and improves image quality. It saves 30% power consumption than a conventional mouse and works even on slightly dusty glass.



Note:

In case the cursor movement is not smooth when working on the extremely clean glass, put on some handprints will get immediate improvements.

(6) AirPad

The illustration on the right shows the correct way to use this innovative AirPad.

This unique mouse pad is made in consideration that you can use the mouse precisely as on the desktop while walking around in the meeting or teaching. You can hold and fix the mouse pad ergonomically with your left hand while using your right hand to maneuver the mouse freely. It resolves the needs for a precision pointing device for the meeting and teaching.

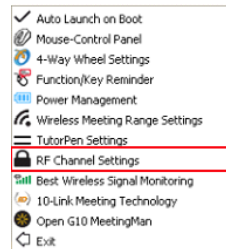


Notice

To ensure that your mouse sends and receives perfectly, please read below instructions for your reference:

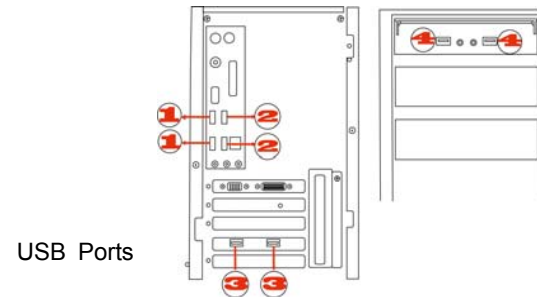
1. Avoid Channel Confliction from Auto Channel Hopping

- 1). Left-click on the icon "🔌" at the right-down corner of your system tray and select "RF Channel Setting".
- 2). Select "Channel-lock" to define a private channel to secure better wireless communication quality.



2. Avoid Interference from iron panel of PC.

Please plug the 10-Link receiver into 4 to avoid wireless signal shielding instead of placing at 1、2 or 3 .



3. Use USB extension cable to position the 10-Link receiver at a far location to prevent electromagnetism interference from

devices

4. Avoid using the wireless mouse on a metal surface. Metals such as iron, aluminum, or copper shield the radio frequency transmission and slow down the mouse's response time or cause the mouse to fail temporarily.

5. The radio frequency is 2.4GHz, it is safe for our bodies, but please be cautious in using cardiac pacemaker or other body auxiliary instruments.

Troubleshooting

If the mouse is not working:

1. Make sure the mouse power is on.
2. Check battery and battery installation.
3. Check receiver installation.
4. Try another USB port.

Product Support

Need help with technical support? Please go to: <http://www.a4tech.com/ennew/support.asp> and our support team will respond within 72 hours.

**All pictures and description mentioned above is for reference only and is subject to change without notice.