

No anyLag

—— Full speed , No Delay ——

2.4G RF Mouse User Manual

Model: G3-230

www.a4tech.com

THIS DEVICE COMPLIES WITH PART 15 OF THE FCC RULES. OPERATION IS SUBJECT TO THE FOLLOWING TWO CONDITIONS: (1) THIS DEVICE MAY NOT CAUSE HARMFUL INTERFERENCE AND (2) THIS DEVICE MUST ACCEPT ANY INTERFERENCE RECEIVED, INCLUDING INTERFERENCE THAT MAY CAUSE UNDESIRE OPERATION.

Federal Communications Commission Requirements

The equipment has been tested and found to comply with the limits for Class B Digital Device, pursuant to part 15 of the FCC Rules. These limits are designed to provide reasonable protection against harmful interference in a residential installation. This equipment generates uses and can radiate radio frequency energy and, if not installed and used in accordance with the instruction, may cause harmful interference to radio communication. However, there is no guarantee that interference will not occur in a particular installation. If this equipment does cause harmful interference to radio or television reception, which can be determined by turning the equipment off and on, the user is encouraged to try to correct the interference by one or more of the following measures:

- Reorient or relocate the receiving antenna.
- Increase the separation between the equipment and receiver.
- Connect the equipment into an outlet on a circuit different from that to which the receiver is connected.
- Consult the dealer or an experienced radio/TV technician for help.

THE CHANGES OR MODIFICATIONS NOT EXPRESSLY APPROVED BY THE PARTY RESPONSIBLE FOR COMPLIANCE COULD VOID THE USER'S AUTHORITY TO OPERATE THE EQUIPMENT.




This device complies with Part 15 of the FCC Rules. Operation is subject to the following two conditions:

- (1) This device may not cause harmful interference, and
- (2) This device must accept any interference received, including interference that may cause undesired operation.

FCC Radiation Exposure Statement

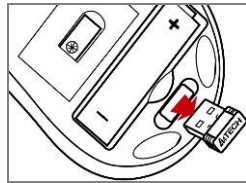
The equipment complies with FCC radiation exposure limits set forth for uncontrolled equipment and meets the FCC radio frequency (RF) Exposure Guidelines in Supplement C to OET65. The equipment has very low levels of RF energy that it is deemed to comply without testing of specific absorption ratio (SAR).

Knowing the Product

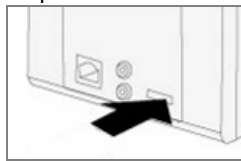
Far Range Up to 15 Meters X-Far Wireless range ensures more operation freedom. (Note: Actual operating distance may vary and depend on working environments)	
8 Gestures in Right Button The mouse allows you get 8 functions on "Right" button.	
Battery Status Indicator Aware of the battery power anytime with A4 Tech's uniquely designed "8 in Right" software	

Hardware Installation

1. Pull out the nano-Receiver from the bottom of mouse.



2. Plug nano-receiver into USB port of your computer or notebook.

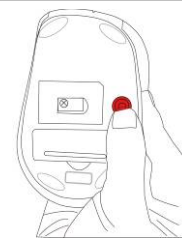


3. Insert the supplied battery, making sure that the positive (+) and negative (-) ends of the battery match the polarity indicators inside the battery housing. and power will be automatically on. Now you can use the mouse.

Power Management of the Mouse


1. To power on the mouse, press the power button for approximate 3 seconds.
2. To turn off the mouse power, press the power button on the bottom of the mouse till the LED light is off.


Note: The mouse can be awaked easily by moving the mouse randomly if long time no using.

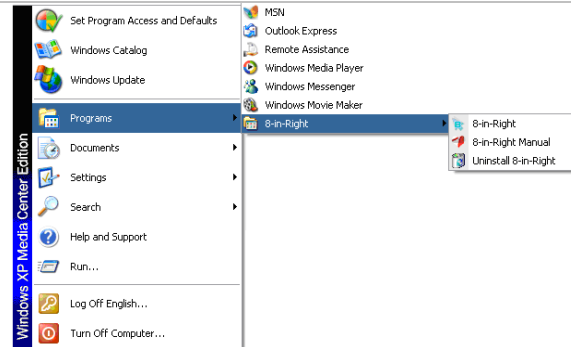


The wireless mouse is plug-and-play. No driver is required. If you would like to get more function, please install the software (enclosed on the CD) first

Software Installation

1. Before installing the mouse software, please uninstall any previous installed mouse software.
2. Insert enclosed CD to start installation.
3. Follow on-screen instructions to complete the installation.
4. The icon  will appear on your desktop, then you have successfully installed the software.

5. To launch the software, double click the icon  on your desktop or go to Start—Programs—8 in Right, then the icon will appear in the taskbar at the right corner of your screen.



Software Instructions

A. How to get 8 functions in right button of the mouse


From the “task pull-down” menu of each arrow direction, you can select mouse, office sets, key combinations, multimedia and internet” 6 main function categories and there are more than 30 different functions that are ready for your immediate selection.

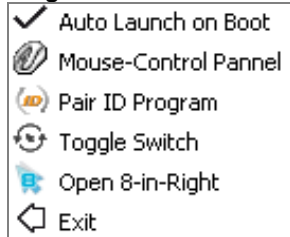


Task Pull-down Menu

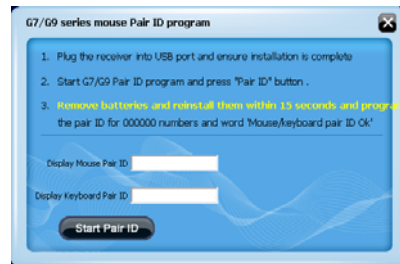
B. How to Pair the X-Far Wireless Devices

The G5/G7/G9 mouse series have been preset the ID Code in the factory. But under the circumstances you lose receiver or want to use with the other receiver in the same product series, you need to refresh the ID Code before using it.

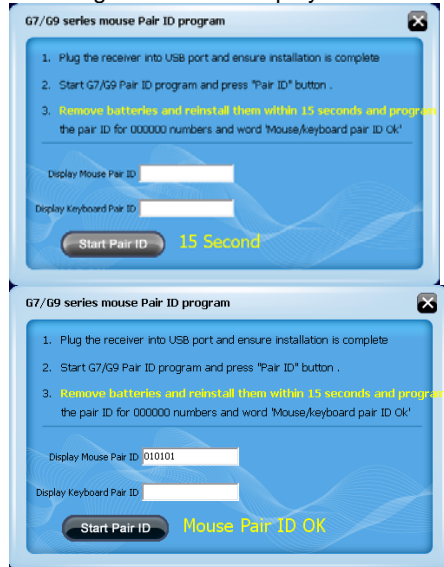
Step 1: Right click on the icon  in the taskbar  and select **"Pair ID Program"**



Step 2: Press **"Start Pair ID"** to refresh ID Code.



Step 3: Remove the mouse batteries and insert again in 15 seconds · 6 digits of matching code will be displayed on the menu as shown **"Mouse Pair ID OK"**.



C. How to Indicate Battery Status

All of G7 series have Battery status Indicator in the software, click "Battery" in the main menu of the software, then the battery power status will be displayed on the screen. It is convenient that you can easily be aware when the battery power is low and change battery in time.

Note: There are four levels: 100%、75%、50% and 25% respectively, if the value is less than 25%, it is recommended that you should change the battery right away.



Notice: To ensure that your mouse sends and receives perfectly, please read below instructions for your reference:

1. To avoid electromagnetic interference, place the receiver at least 8 inches (20 cm) away from other electrical devices, such as the computer, the monitor or external storage devices.
2. The operation distance depends on the working environment and can reach to 15 meters without any interference, to get optimal performance, please adjust the distance between mouse and receiver according to different situations.
3. Avoid using the wireless mouse on a metal surface. Metals such as iron, aluminum, or copper shield the radio frequency transmission and slow down the mouse's response time or cause the mouse to fail temporarily.

The radio frequency is 2.4GHZ, it is safe for our bodies, but please be cautious in using cardiac pacemaker or other body auxiliary instruments.

Troubleshooting

If the mouse is not working:

1. Make sure the mouse is on.
2. Check battery and battery installation.
3. Check receiver installation.
4. Try another USB port.