



**2.4G RF MOUSE**

**User Guide**

**MODEL: G3-620F**

[www.a4tech.com](http://www.a4tech.com)

**THIS DEVICE COMPLIES WITH PART 15 OF THE FCC RULES. OPERATION IS SUBJECT TO THE FOLLOWING TWO CONDITIONS: (1) THIS DEVICE MAY NOT CAUSE HARMFUL INTERFERENCE AND (2) THIS DEVICE MUST ACCEPT ANY INTERFERENCE RECEIVED, INCLUDING INTERFERENCE THAT MAY CAUSE UNDESIRE OPERATION.**

**Federal Communications Commission Requirements**

The equipment has been tested and found to comply with the limits for Class B Digital Device, pursuant to part 15 of the FCC Rules. These limits are designed to provide reasonable protection against harmful interference in a residential installation. This equipment generates uses and can radiate radio frequency energy and, if not installed and used in accordance with the instruction, may cause harmful interference to radio communication. However, there is no guarantee that interference will not occur in a particular installation. If this equipment does cause harmful interference to radio or television reception, which can be determined by turning the equipment off and on, the user is encouraged to try to correct the interference by one or more of the following measures:

- Reorient or relocate the receiving antenna.
- Increase the separation between the equipment and receiver.
- Connect the equipment into an outlet on a circuit different from that to which the receiver is connected.
- Consult the dealer or an experienced radio/TV technician for help.

**THE CHANGES OR MODIFICATIONS NOT EXPRESSLY APPROVED BY THE PARTY RESPONSIBLE FOR COMPLIANCE COULD VOID THE USER'S AUTHORITY TO OPERATE THE EQUIPMENT.**

This device complies with Part 15 of the FCC Rules. Operation is subject to the following two conditions:

- (1) This device may not cause harmful interference, and
- (2) This device must accept any interference received, including interference that may cause undesired operation.



**FCC Radiation Exposure Statement**

The equipment complies with FCC radiation exposure limits set forth for uncontrolled equipment and meets the FCC radio frequency (RF) Exposure Guidelines in Supplement C to OET65. The equipment has very low levels of RF energy that it is deemed to comply without testing of specific absorption ratio (SAR).

## About “Screen Capture Tool”

Bundles with value-added functions, such as Screen capture, TutorPen, Keyboard/Mouse Simulation, 16-in-One, 4-way Wheel, etc. Best software for your every needs.

### Define the Mouse Buttons

1. Click the icon  at the system tray to open the “Main Menu”.
2. Select the function you preferred for each button from the pull-down function list.
3. Store and apply the setting by clicking "Apply".
4. Click “Exit”.
5. Set “Function/Key Reminder” by clicking  at the system tray.



## Set 5 functions in ONE button

You can define 5 functions in mouse button **6**, such as Screen capture, TutorPen, Keyboard/Mouse Simulation, 16-in-One, 4-way Wheel, etc.

### How to shift / apply 5 functions


- 1) Press/hold the left button and click the right button to shift 5 chosen functions. and the function info will pop up (as below figure)




- 2) Press mouse button **6** to perform the chosen functions.

## Capture Screen


### How to set:

Select "Screen Capture" from the function list of the button .

### Usage:

- 1) Press/hold the mouse button  and drag the mouse cursor to the opposite corner and form a box around your object.



- 2) Click  on "Edit Tool" and paste (Ctrl+V) it to any document or during online chatting. after editing your screenshot (Video capture is only supported on Vista or above)

## Use the Wireless Mouse for your Presentation

### 1. TutorPen

Press/hold the defined button to draw a line to remark the objects on your screen. You can eliminate the lines by double or triple click on the defined button.

You may set the line width in the "TutorPen Setting".



### **Open a file or a program**

You may set up the defined buttons in association to the documents, programs or shortcuts required during your presentation. Just press the buttons to open them instantly.

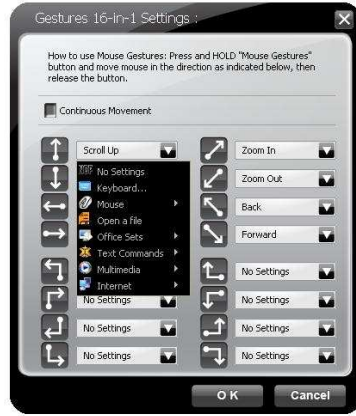
### **Gesture 16-in-1**

Select "Gesture 16-in-1" from the pull-down function list, the setup box will pop up.


You may set up 16 user-friendly functions/commands to the defined gesture button **2** or **6**, including the functions of Keyboard/Mouse simulation, Open a file, Office, Text, Multimedia, Internet, etc.

**Usage:** Press/hold the gesture button **2** or **6** and draw a line in the direction described to

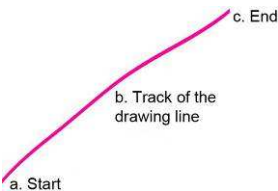

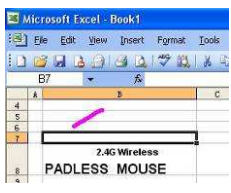
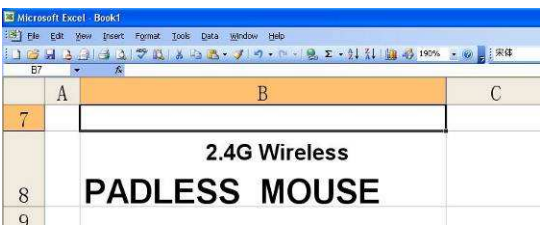
perform the preset functions/commands.



**Setup Box**

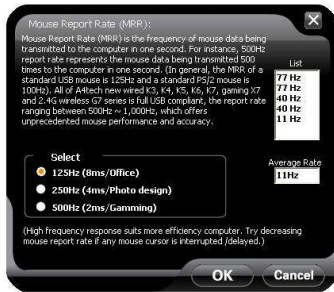
**Example:** Using  as "Zoom In" by default, just press/hold the Gesture button **2** or **6** and draw a line as shown below, and then release the button, the picture or the document will be zoomed in immediately.




	<p>a. Press/hold the gesture button <b>2</b> or <b>6</b></p> <p>b. Draw the line as the  arrow direction</p> <p>c. Release gesture button <b>2</b> or <b>6</b></p> <p>Then the picture has been zoomed in.</p>
Original	Zoom In
	

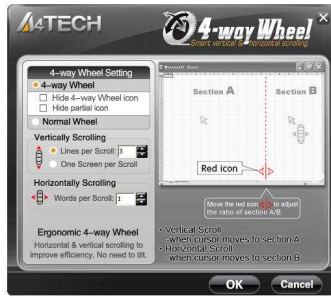
### Adjust Mouse Report Rate

Click the icon  at the system tray and select "Report Rate" to adjust mouse report rate.




## Change the Mouse Wheel to 4-way Wheel

Click the icon  at the system tray and select "4-way Wheel".



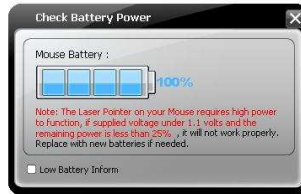
- 1) The 4-way Wheel splits the working screen into 2 areas A and B as shown on the right. When the cursor locates in area A, the wheel will perform vertical scrolling; when the cursor locates in area B, the wheel will perform horizontal scrolling
  - 2) You may move the Red split icon to change the ratio of area A and B.
- (Note: If the "Normal Wheel" is selected, the wheel will perform as a normal mouse wheel, and "4-way Wheel" function won't be launched.)**

## Power-saving Management

1. Click the icon  at the system tray and select "Power Management".



2. Battery status: Click "Battery Indicator" to see the battery power status.



3. Low battery inform: Low battery informs will pop up at the right corner of your screen when battery low.



**Key Combination:**

Quickly execute hotkey commands, such as: Cut, Copy, Paste, Delete, Search, Select All, Redo, Undo, New File, Open File, Save File, Print, etc.


**Office Sets**

Quickly execute other office commands, such as: "Zoom In, Zoom Out, Paste Text, Double Click and Triple click".

**Internet & Multimedia:**

Quickly execute Internet / multimedia commands, such as: Backward, Forward, Stop, Refresh, Search, My Favorite, Web Browser, E-mail, Media Player (Open), Previous, Next, Stop, Play/Pause, Mute, Volume+, Volume, etc.

**Additional tasks of Screen Capture Tool**

Click the icon  at your system tray, the full task list of Screen Capture Tool will pop up as shown below:



### **Auto Launch on Boot**

If this task is selected, Screen capture tool will auto-execute when the system boots up.


### **Mouse-Control Panel**

Open "Mouse Properties" of your Windows system, e.g., you may setup mouse pointers and other often-used mouse settings.

### **Notice:**


To ensure a good wireless connection, please read below instructions for your reference:

#### **1. Avoid channel confliction from auto channel hopping**

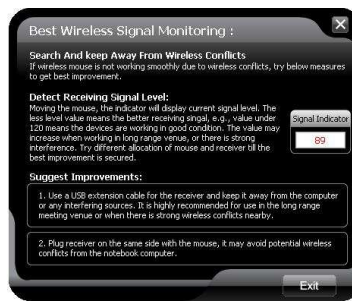
- 1) Click the icon  at the system tray and select "RF Channel Setting".
- 2) Select "Channel-lock" to define a private channel to secure better wireless connection quality.



## 2. Avoid interference from iron panel of PC

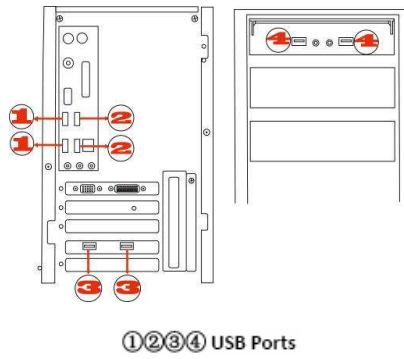
Click the icon  at the system tray and select "Best Wireless Signal Monitoring".





If the wireless mouse is not working smoothly due to wireless conflicts, try below methods to get improvement.

- A) Please plug the Multi-link receiver into ③、④ to avoid shielding wireless signal instead of ①、②.



## Troubleshooting & FAQ

If the mouse is not working:

1. Make sure the mouse power is on
2. Try another USB port
3. Ensure the Multi-link receiver is inserted

4. Check battery and battery installation

### **Product Support**

Need more technical support? Please go to: <http://support.a4tech.com/> and our support team will respond within 72 hours.

\*\*Features and specifications of all A4TECH products are subject to change without notification.