



EST. 1987  
**A4TECH**

## **User Manual**

Model: G7-750



[www.a4tech.com](http://www.a4tech.com)

**THIS DEVICE COMPLIES WITH PART 15 OF THE FCC RULES. OPERATION IS SUBJECT TO THE FOLLOWING TWO CONDITIONS: (1) THIS DEVICE MAY NOT CAUSE HARMFUL INTERFERENCE AND (2) THIS DEVICE MUST ACCEPT ANY INTERFERENCE RECEIVED, INCLUDING INTERFERENCE THAT MAY CAUSE UNDESIRE OPERATION.**

**Federal Communications Commission Requirements**

The equipment has been tested and found to comply with the limits for Class B Digital Device, pursuant to part 15 of the FCC Rules. These limits are designed to provide reasonable protection against harmful interference in a residential installation. This equipment generates uses and can radiate radio frequency energy and, if not installed and used in accordance with the instruction, may cause harmful interference to radio communication. However, there is no guarantee that interference will not occur in a particular installation. If this equipment does cause harmful interference to radio or television reception, which can be determined by turning the equipment off and on, the user is encouraged to try to correct the interference by one or more of the following measures:

- Reorient or relocate the receiving antenna.
- Increase the separation between the equipment and receiver.
- Connect the equipment into an outlet on a circuit different from that to which the receiver is connected.
- Consult the dealer or an experienced radio/TV technician for help.

**THE CHANGES OR MODIFICATIONS NOT EXPRESSLY APPROVED BY THE PARTY RESPONSIBLE FOR COMPLIANCE COULD VOID THE USER'S AUTHORITY TO OPERATE THE EQUIPMENT.**

This device complies with Part 15 of the FCC Rules. Operation is subject to the following two conditions:

- (1) This device may not cause harmful interference, and
- (2) This device must accept any interference received, including interference that may cause undesired operation.

**FCC Radiation Exposure Statement**

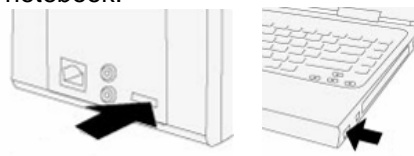
The equipment complies with FCC radiation exposure limits set forth for uncontrolled equipment and meets the FCC radio frequency (RF) Exposure Guidelines in Supplement C to OET65. The equipment has very low levels of RF energy that it is deemed to comply without testing of specific absorption ratio (SAR).

## Hardware Installation

1. Pull out the Nano-receiver from the bottom of mouse.



2. Plug Nano-receiver into USB port of your computer or notebook.



3. Insert the supplied batteries, make sure that the positive (+) and negative (-) ends of the batteries match the polarity indicators inside the batteries housing. Then the power will be automatically on. After wireless setup has completed, the mouse is ready to use.

## Power Management of the Mouse

1. To power on the mouse, press the power button for approximate 3 seconds.
2. To turn off the mouse power, press the power button on the bottom of the mouse till the LED light is off.

Note: The mouse can be activated from sleeping mode easily by moving it around.






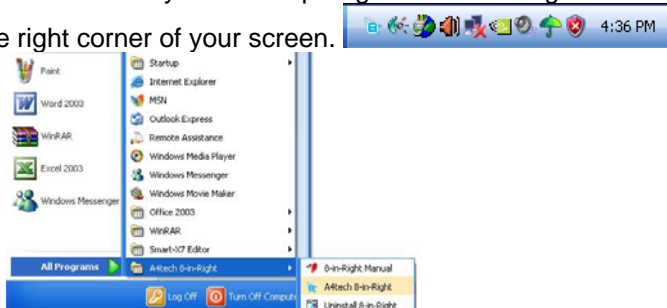
The wireless mouse is plug-and-play. No driver is required. If you would like to get more function, please download software in our website: [www.a4tech.com](http://www.a4tech.com).

## Mouse Button Identification



## Software Installation

1. Before installing the mouse software, please uninstall any previously installed mouse software.
2. Extract the ZIP file to your local disk and double click  to start installation.
3. Follow on-screen instructions to complete the installation.
4. The icon  will appear on your desktop, then you have successfully installed the software.
5. To launch the software, double click the icon  on your desktop or go to Start—Programs—A4tech 8-in-Right, then the icon will appear in the taskbar at the right corner of your screen.



## Software Instructions

## A. Illustration of the main menu

1. Click "8 in 1", from the "task pull-down" menu of each arrow direction, you can select "keyboard, mouse, office sets, key combinations, multimedia and internet" 6 main function categories and there are more than 30 different functions that are ready for your immediate selection.



Task Pull-down Menu

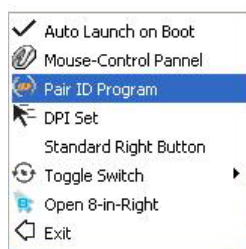
2. Click "Customizable Button", the 4<sup>th</sup> and 5<sup>th</sup> button can be programmed to different functions.

## B. How to Pair the X-Far Wireless Devices

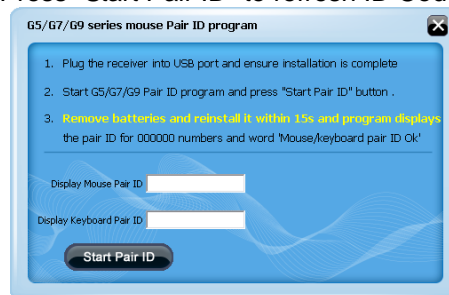
The G5/G7/G9 mouse series have been preset the ID Code in the factory. But under the circumstances you lose receiver or want to use with the other receiver in the same product series, you need to refresh the ID Code before using it.

Step 1: Right click on the icon  in the taskbar

 and select "Pair ID Program"




Step 2: Press "Start Pair ID" to refresh ID Code.



Step 3: Remove the mouse batteries and insert again in 15 seconds, 6 digits of matching code will be displayed on the menu as shown "Mouse Pair ID OK".



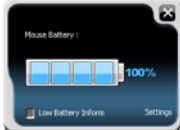
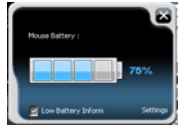
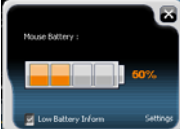
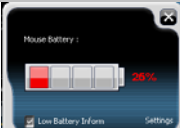
C. How to Indicate Battery Status

All of G7 series have Battery Status Indicator in the software, click “” in the main menu of the software, then the battery power status will be displayed on the screen. It is convenient that you can easily be aware when the battery power is low and change battery in time.



Smart Mouse Battery Low Warning

Tick “Low Battery Inform”, when the mouse power is low, Figure. A will pop up in the right corner of your screen to remind you to replace the battery right away.

Mouse Battery Low Warning	Working Voltage	Display
100%	2.4V and Above	
75%	2.2~2.39V	
50%	2.05V~2.19V	
25%	2.04V and Below	

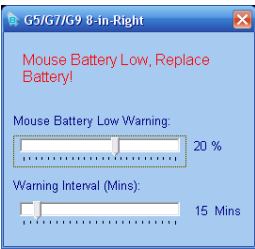
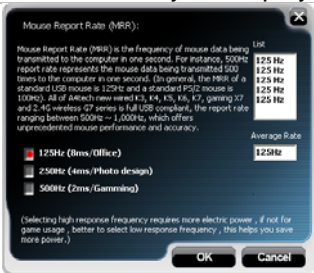


Figure. A

D. Three Shiftable Report Rates

There are 3 report rates can be preset for high sensitive response time of 2/4/8 milliseconds, it improves cursor delay and jumping problems of wireless mouse, saves power in working and increases accuracy when playing the games.


Mouse Report Rate	Response Time	Suitable Range
500Hz	2ms	Gaming
250Hz	4ms	Office
125Hz	8ms	Office

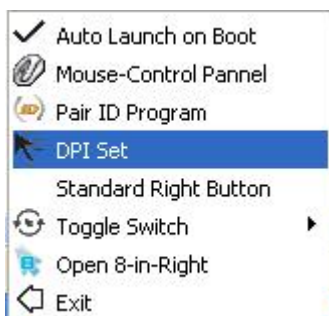


## E. DPI Setting

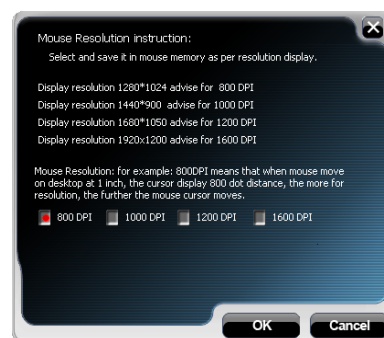
There are 4 DPI levels are provided to satisfy your needs for works and games.

Step 1: Right click on the icon  in the taskbar

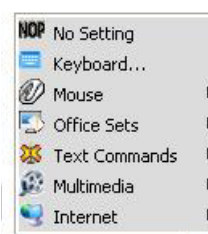
 and select "DPI Set"





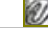

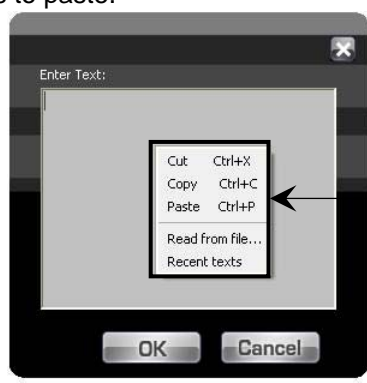



Step 2: Choose the desired DPI from below popped window.







## How to use 8 in 1



After launching **8 in 1**, click on , then you will see a list of different functions.

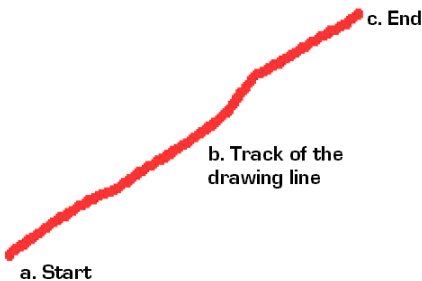
Preset Functions	Available tasks
 No Setting	System default or no function is selected
 Keyboard...	Any key or any collective key on the keyboard
 Mouse	4th Button, 5th Button, Scroll Up, Scroll Down, Scroll Left, Scroll Right. Zoom In & Zoom Out, Paste Text, Execute Program. <b>Note:</b> If the "Paste Text" of the "Office Sets" is selected, the "Figure. A" will pop up as shown; you may input texts to paste.
 Office Sets	 <p>Click right button of the mouse in "Text Area" will bring you text editing tool (shown as the left)</p> <p><b>Fig. A</b></p>
 Text Commands	New File (Ctrl+N), Open File (Ctrl+O), Save File (Ctrl+S), Redo (Ctrl+Y), Undo (Ctrl+Z).
 Multimedia	Media Player, Previous Track, Next Track, Stop, Play/Pause, Mute, Volume+, Volume -.
 Internet	Back, Forward, Stop, Search, Refresh, My Favorite, Web Browser, IE-mail

Now let's take  as example to show you clearly on how to use these functions:


1. Select  icon to represent "Zoom In" as shown:  

2. Press  to save settings.

3. Draw the line in Excel & Windows Picture and Fax Viewer.



a. **Start:** Press the “Gesture Button”

b. **Track of the drawing line:** Draw the lines as the  arrow direction.

c. **End:** Release the “Gesture Button”

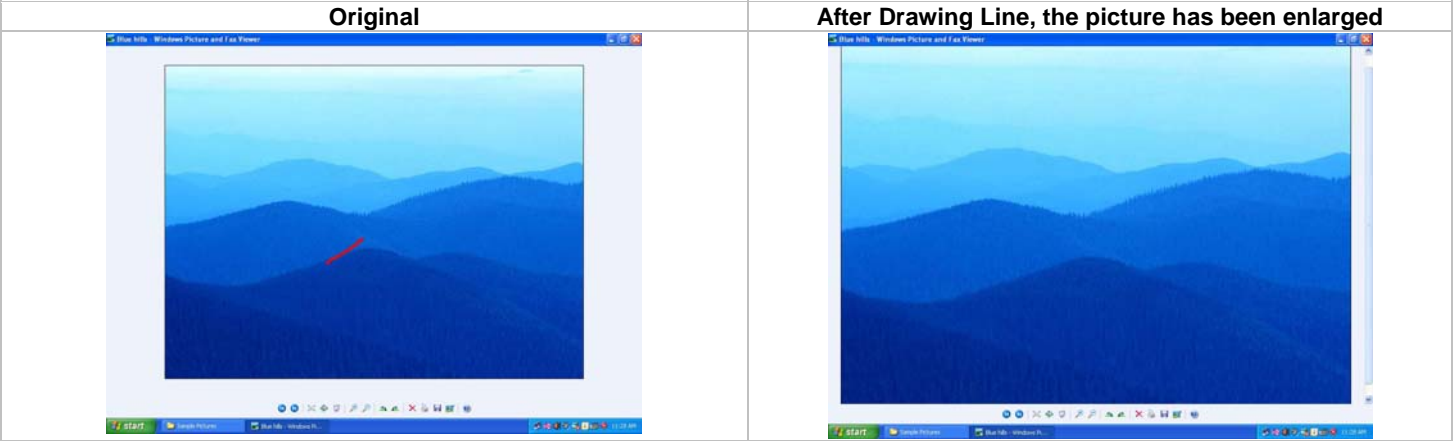
**Reminder:** If **step b** is omitted, it will perform as “Gesture Button” default function.

d. Then the picture has been zoomed in accordance to the magnitude of the line length.

4. See the contrast after drawing the line.  
Excel:

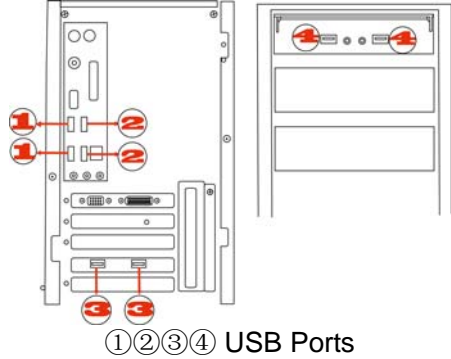
Original				After Drawing Line, the column has been enlarged			
	A	B	C		A	B	C
1				1			
2				2			
3		Hello		3		Hello	
4				4			
5				5			
6				6			

Windows Picture and Fax Viewer:



Notice

To ensure that your mouse sends and receives perfectly, please read below instructions for your reference:  
1. Interference from iron panel of PC.



To get optimal performance, please plug the Nano-receiver into ③、④ to avoid shielding wireless signal when placing at ①、②.

2. Use USB extension wire to position the Nano-receiver at a far location to prevent electromagnetism interference from

devices which don't pass safety standard.

3. Avoid using the wireless mouse on a metal surface. Metals such as iron, aluminum, or copper shield the radio frequency transmission and slow down the mouse's response time or cause the mouse to fail temporarily.

The radio frequency is 2.4GHZ, it is safe for our bodies, but please be cautious in using cardiac pacemaker or other body auxiliary instruments.

## Troubleshooting

If the mouse is not working:

1. Make sure the mouse is on.
2. Check battery and battery installation.
3. Check receiver installation.
4. Try another USB port.

## Product Support

Need help with technical support? Please go to:

<http://www.a4tech.com/ennew/support.asp> and our support team will respond within 72 hours.

\*\*Features and specifications of all A4 TECH products are subject to change without notification.

### Specification

RF Data Transmit Rate	500k bps	Frequency	2.407GHz ~2.473GHz
Modulation Type	GFSK	ID Codes	524,288 sets