



User Manual

Model: G9-640

www.a4tech.com

THIS DEVICE COMPLIES WITH PART 15 OF THE FCC RULES. OPERATION IS SUBJECT TO THE FOLLOWING TWO CONDITIONS: (1) THIS DEVICE MAY NOT CAUSE HARMFUL INTERFERENCE AND (2) THIS DEVICE MUST ACCEPT ANY INTERFERENCE RECEIVED, INCLUDING INTERFERENCE THAT MAY CAUSE UNDESIRE OPERATION.

Federal Communications Commission Requirements

The equipment has been tested and found to comply with the limits for Class B Digital Device, pursuant to part 15 of the FCC Rules. These limits are designed to provide reasonable protection against harmful interference in a residential installation. This equipment generates uses and can radiate radio frequency energy and, if not installed and used in accordance with the instruction, may cause harmful interference to radio communication. However, there is no guarantee that interference will not occur in a particular installation. If this equipment does cause harmful interference to radio or television reception, which can be determined by turning the equipment off and on, the user is encouraged to try to correct the interference by one or more of the following measures:

- Reorient of relocate the receiving antenna.
- Increase the separation between the equipment and receiver.
- Connect the equipment into an outlet on a circuit different from that to which the receiver is connected.
- Consult the dealer or an experienced radio/TV technician for help.

THE CHANGES OR MODIFICATIONS NOT EXPRESSLY APPROVED BY THE PARTY RESPONSIBLE FOR COMPLIANCE COULD VOID THE USER'S AUTHORITY TO OPERATE THE EQUIPMENT.

This device complies with Part 15 of the FCC Rules. Operation is subject to the following two conditions:

- (1) This device may not cause harmful interference, and receiver.
- (2) This device must accept any interference received, including interference that may cause undesired operation.

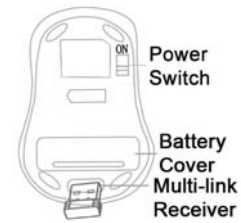
FCC Radiation Exposure Statement

The equipment complies with FCC radiation exposure limits set forth for uncontrolled equipment and meets the FCC radio frequency (RF) Exposure Guidelines in Supplement C to OET65. The equipment has very low levels of RF energy that it is deemed to comply without testing of specific absorption ratio (SAR).

1. Hardware Installation

1). Connect the Multi-link receiver

Take out the Multi-link receiver from bottom of the mouse and connect it to your computer.



2). Insert the batteries

Open the battery cover and insert the supplied batteries.

Note: Make sure the positive (+) and negative (-) ends of the battery match the polarity indicators inside the battery compartment.

3). Turn on your Mouse

Push the power switch to ON position and turn on your mouse. >>Then LED light at the bottom of the mouse is on immediately.

4). Position the wireless mouse and Multi-link receiver within 15m operating range (Note: The actual distance depends on the environment.)

Note: For more functions such as RF Channel Lock, Gesture 16-in-1, 4-way Wheel and so on, please install the G9 16-in-1(enclosed in the CD) software first!

2. Software Installation (Note: The software is applicable to Windows 2000/ XP/ 2003/ Vista/ Windows 7)

- 1). Uninstall previous installed mouse software.
- 2). Insert the enclosed CD to start installation and follow the on-screen instructions to finish the software installation.
- 3). The shortcut icon "16" will appear on your desktop screen, and then you have successfully installed the software. (Otherwise, installation is failed and you have to remove the software and re-install.)

To remove the software, follow the steps:


Go to Start >> Programs >> A4TECH Software >> G9 16-in-1 >> Uninstall G9 16-in-1



To launch the software

Double click on the icon "16" at the right-down corner of your system tray or double click on the icon "16" at your desktop screen. The "Main Menu" of "16-in-1" software will pop up.

Power Management

Click on the icon  at the right-down corner of your system tray and select "Power Management" to define wake-up modes and sleeping time.

According to the stand-by status, the intelligent power-saving management supports "Slight, Little, Middle & Deep" 4 working modes. User may define the time interval to enter into the Deep Sleeping Mode, and 6 seconds enter into Deep Sleeping Mode after the PC is power off.

Move to Wake Up:

This is convenient to awake the mouse, and it consumes 0.35mA current when in stand-by status.

Click to Wake Up:

This requires a click to awake the mouse, yet it consumes as less as 0.03mA current in stand-by status.

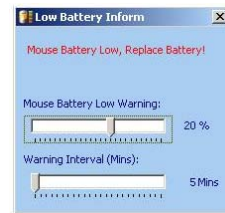
Check Battery power:

Click "Battery indicator" in "power-saving management" to check the battery power status.




Low Battery Inform:

When the mouse power is low, Low Battery Inform page will pop up at the right corner of your screen to remind you to replace the batteries in time.



Low Battery Inform Page

5). RF Channel Setting:

Click on the icon  at the right-down corner of your system tray and select "RF Channel Setting" to indicate RF signal and set a specific channel to avoid RF interference.

Auto Channel Hopping:

This is G9 16-in-1 default setting. Applicable to single-alone user, or when there is no wireless interference nearby.

Channel-lock:

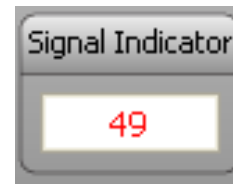
If there is more than one set of wireless Mice& KBs are used in the same site, you may perform "Channel-lock" to assign exclusive channel for each device so as to avoid "Auto Channel Hopping" wireless conflicts and get "Zero-lag" better performance.



RF Channel Setting


Detect Receiving Signal Level:

Moving the mouse, the indicator will display current signal level. The less level value means the better receiving signal, value under 120 means the devices are working in good condition. The value may increase when working in a long range venue, or there is strong interference. Try different allocation of mouse and receiver till the best improvement is secured.



Signal Level Indicator

6). Best Wireless Signal Monitoring

Click on the icon  at the right-down corner of your system tray and select "Best Wireless Signal Monitoring" to indicate RF signal and help to find the optimal locationl to avoid RF interference.

Search and Keep away from Wireless Conflicts:

If wireless mouse is not working smoothly due to wireless conflicts, use wireless signal monitoring to monitor and improve the signal level and get best improvements.

Detect Receiving Signal Level:


Moving the mouse, the indicator will display current signal level. The less level value means the better receiving signal, value under 120 means the devices are working in good condition. The value may increase when working in a long range venue, or there is strong interference. Try different allocation of mouse and receiver till the best improvement is secured.



Suggest Improvements:

1. Use a USB extension cable for the receiver and keep it away from the computer or any interfering sources. It is highly recommended to use it for the long range meeting venue or when there is strong wireless conflict nearby.
2. Plug receiver on the same side with the mouse, it may avoid potential wireless conflicts from the notebook computer.

7). A4tech G-Family

- ① Click on the icon  at the right-down corner of your system tray and select "A4tech G-Family" to add new mice and keyboards.

Effective Meeting:


Multi-link receiver is designed with memory, The "New Mice/KBs ID Pairing" program allows to link up to 3 sets XFAR G3/ G5/ G7/ G9/ G10 series of mice & KBs to operate on the same computer. The "A4tech G-Family" program provides the best sharing of meeting to consolidate all member intelligences.

**Portability:**

The Multi-link receiver allows to link up to 3 sets XFAR G3/ G5/ G7/ G9/ G10 series of mice & KBs. You may leave it installed on your notebook and use any paired mice and keyboards at home or in the office.

Note:

The red-colored of Multi-link G9 receiver is also available with single gift box. It is back compatible and supports A4Tech's G3, G5, G7 and G10 series, making them reunion as a family. Note that functions of multiple buttons will be restricted for those limited buttons of some back models. And Multi-link function does not applicable to G6 series.

②Click "" will start to add new mice and keyboards. (For better operation, you may need another mouse to perform ID pairing before the wireless mouse is applicable).
The Multi-link, red-shelled receiver may works with up to 3 sets of mice and keyboards simultaneously. With each attendant a mouse in hand, it increases efficiency. See more details on below "New IDs for Mice/KBs" and "How to Add a New Device Using New Mice/KBs ID Pairing" sections.
If more mice or keyboards are used in working, please pair the new mice/KBs.

Into G-Family Management:

In this section, you will be able to manage the linked mouse and keyboard. Click “Into G-Family Management” will bring the management screen as shown on the right.

Management of Linked Mice and Keyboards:

From the screen, you may see the listing of linked mice and keyboards with their IDs. You may tick or tick off the box to “Enable” or “Disable” the devices, or “Delete” them forever.

Special Note:

Each mouse and keyboard of G9 16-in-1 will have an exclusive ID code by default in the factory. Such ID code is derived randomly from 262,144 combinations. However, in case the ID codes duplicate, please send back the products for maintenance.

③. Follow on-screen instructions to perform “ID Pairing” as shown on the right, click “Next” to continue.



Multi-link Management Program



④ Press any key to wake up the mouse before “ID pairing” is performed.
 >> Locate the power switch (Normally you can find it on the mouse bottom side).
 >> Make sure the power switch is in OFF position and then switch it to ON position within 30 seconds. (If power switch is in ON position, switch it to OFF and back to ON position within 30 seconds).
 >> After above procedure is completed, the mouse will start to perform pairing procedure with the receiver; wait for seconds, the next screen will pop up as shown after ID pairing is completed.



⑤ After ID pairing is completed, move the mouse and reply YES if mouse moves fine, then click NEXT. In case the ID pairing fails, click “BACK” to repeat steps 2, 3 and perform the ID pairing procedure again.



⑥ After above ID pairing is completed, you can follow the below steps:
 1. Click "OK" to complete the ID pairing.
 2. If you need to perform another ID pairing for the new devices, click “New Mice/KBs ID Pairing” again and repeat above steps 2, 3, 4 to perform another ID pairing.



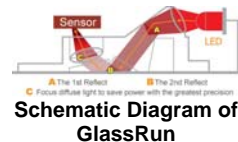
After you have finished adding all the new mice and keyboards, click “Into G-Family Management” to manage the multiple mice and keyboards.

Multi-link Management Program

Innovative GlassRun Technology (Low Power Consumption, High Performance Optical Engine)

The "GlassRun" is the new technology that it collects all the diffusion light and improves image quality. It saves 30% power consumption than a conventional mouse and works even on the slightly dusty glass.

Note: In case the cursor movement is not smooth when working on the extremely clean glass, put on some handprints will get immediate improvements.



Notice

To ensure that your mouse sends and receives perfectly, please read below instructions for your reference:

1. Avoid Channel Confliction from Auto Channel Hopping

1). Left-click on the icon "A4tech" at the right-down corner of your system tray and select "RF Channel Setting".

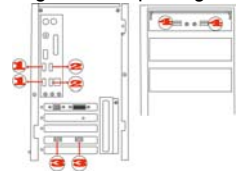


2). Select "Channel-lock" to define a private channel to secure better wireless communication quality.



2. Avoid Interference from iron panel of PC.

Please plug the Multi-link receiver into ③、④ to avoid shielding wireless signal when placing at ①、②.



USB Ports

3. Use USB extension cable to position the Multi-link receiver at a far location to prevent electromagnetism interference from devices
4. Avoid using the wireless mouse on a metal surface. Metals such as iron, aluminum, or copper shield the radio frequency transmission and slow down the mouse's response time or cause the mouse to fail temporarily.
5. The radio frequency is 2.4GHz, it is safe for our bodies, but please be cautious in using cardiac pacemaker or other body auxiliary instruments.

Troubleshooting & FAQ

If the mouse is not working:

1. Make sure the mouse power is on.
2. Try another USB port.
3. Ensure the Multi-link receiver is inserted.
4. Check battery and battery installation.

Product Support

Need help with technical support? Please go to:

<http://www.a4tech.com/ennew/support.asp> and our support team will respond within 72 hours.

**Features and specifications of all A4TECH products are subject to change without notification.