

2.4G RF Gaming Mouse

User Manual

Model: RT62

www.bloody.com

Federal Communications Commission Requirements

This equipment has been tested and found to comply with the limits for a Class B digital device, pursuant to part 15 of the FCC Rules. These limits are designed to provide reasonable protection against harmful interference in a residential installation. This equipment generates uses and can radiate radio frequency energy and, if not installed and used in accordance with the instructions, may cause harmful interference to radio communications. However, there is no guarantee that interference will not occur in a particular installation. If this equipment does cause harmful interference to radio or television reception, which can be determined by turning the equipment off and on, the user is encouraged to try to correct the interference by one or more of the following measures:

- Reorient or relocate the receiving antenna.**
- Increase the separation between the equipment and receiver.**
- Connect the equipment into an outlet on a circuit different from that to which the receiver is connected.**
- Consult the dealer or an experienced radio/TV technician for help.**

FCC Statement

This device complies with FCC radiation exposure limits set forth for an uncontrolled environment.

This device complies with Part 15 of the FCC Rules. Operation is subject to the following two conditions: (1) this device may not cause harmful interference, and (2) this device must accept any interference received, including interference that may cause undesired operation.

Caution!

Any changes or modifications not expressly approved by the party responsible for compliance could void the user's authority to operate the equipment.

System Requirement

Operate System: Windows XP/Vista/7/8

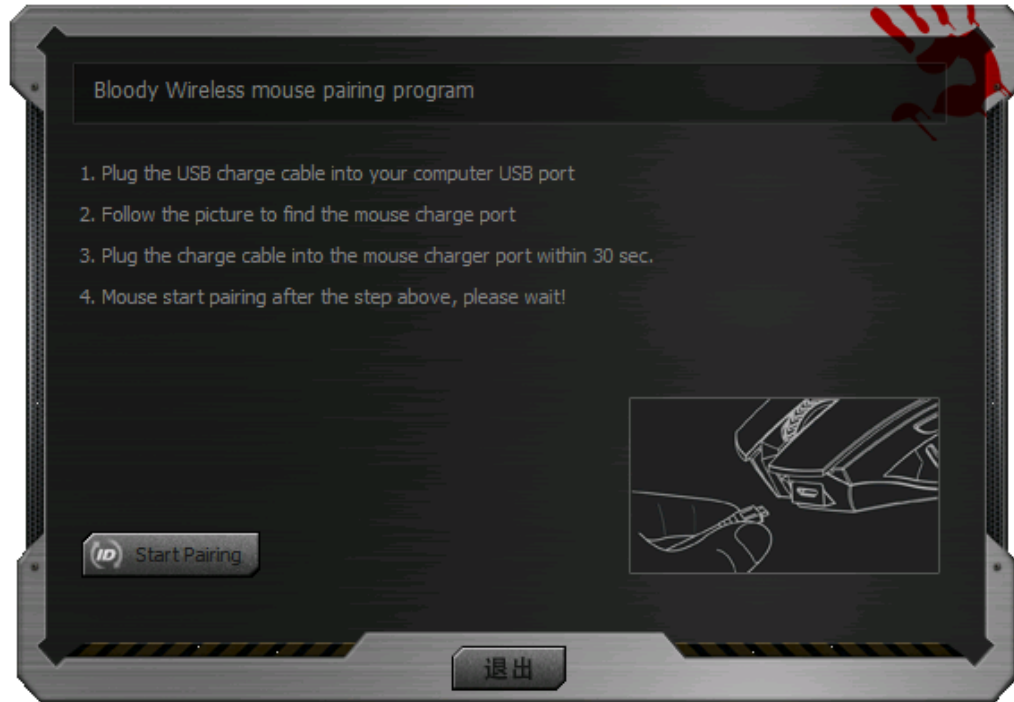
Hardware: PC system compatible

Define the Mouse Buttons:



Pair the Mouse or Keyboard with "Bloody Gaming Family "

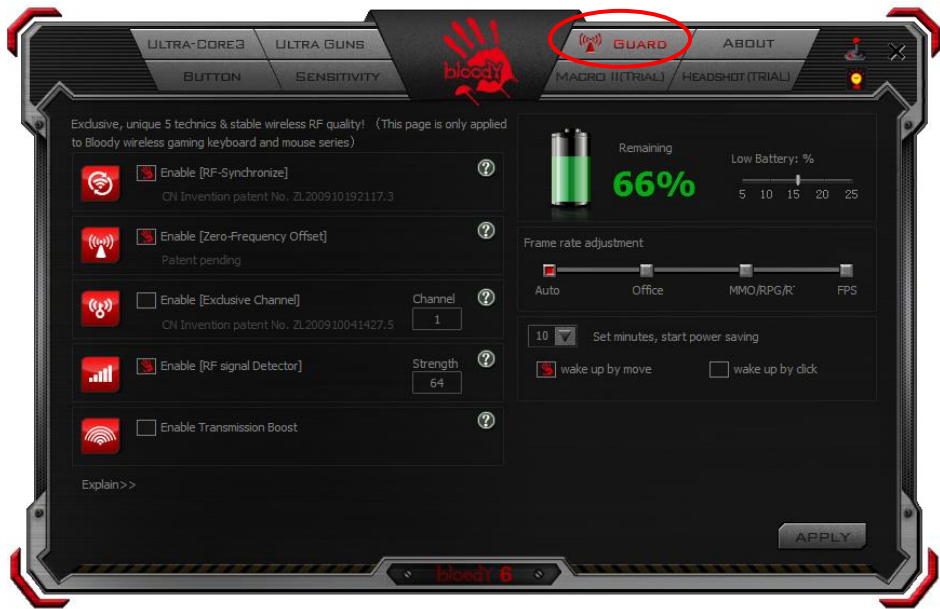
1. Plug the Dongle of Bloody Series to USB port.
2. Follow below steps to pair wireless mouse or keyboard.



3. When connect successfully , you can use your keyboard or mouse.

Power-saving Management

1. Click the icon  at the system tray and select GUARD to manage the Power Management of mouse.



2. Software Low battery inform: Low battery informs will pop up at the right corner of your screen when battery low.



3. How to charge this Mouse:

RF Mouse Status

The Charging LED indicates:

- Low battery: the LED of wheel will be flicker (15sec). You could plug the USB cable in USB port of PC.
- Charging mode: When the cable connect to mouse, the LED of wheel keep red message. If the Lithium battery is full charged, the LED will be breathing light message.

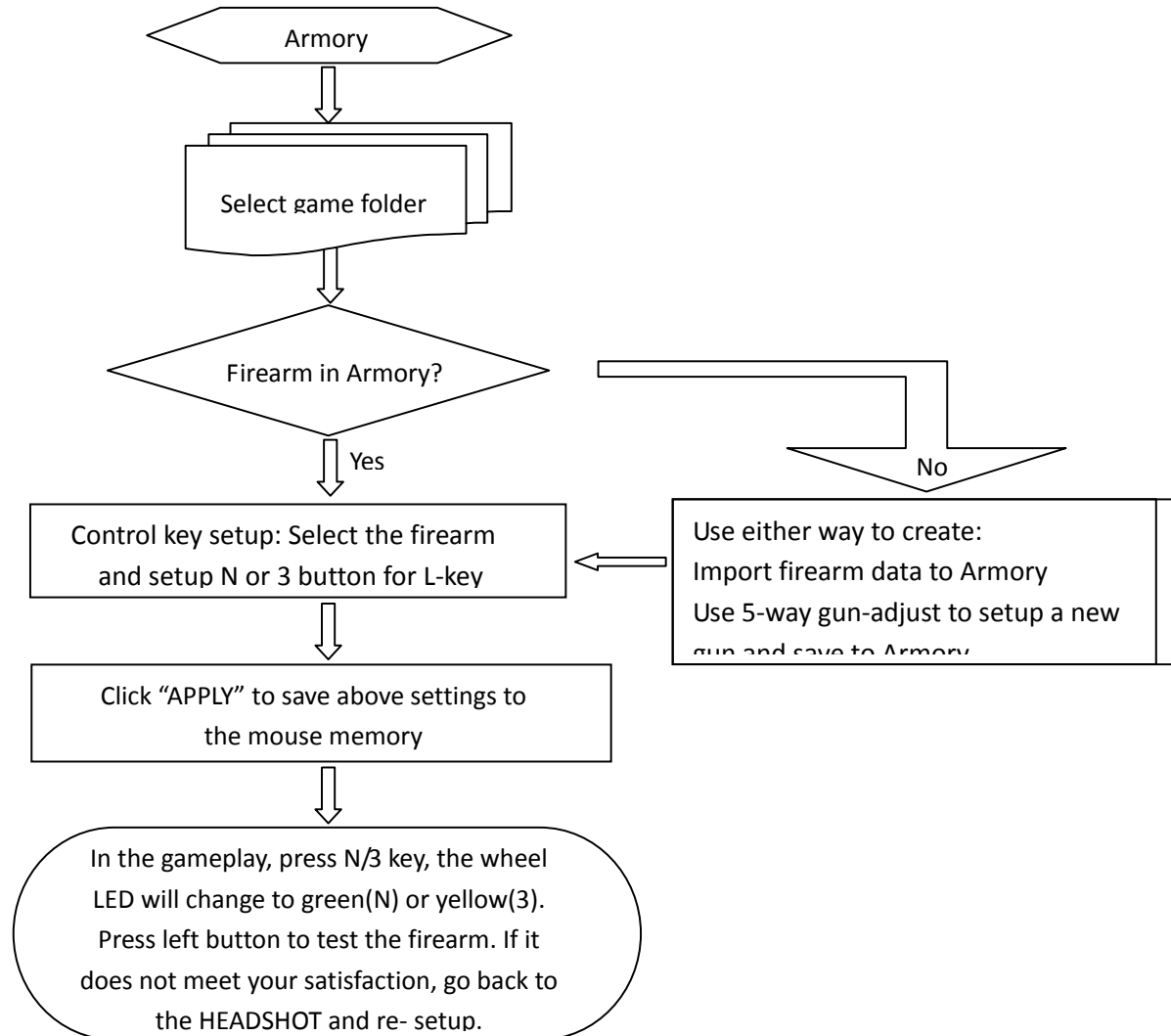


Gaming Mouse Software Introduction:

Bloody - HeadShot Firearm Adjustments

Features:

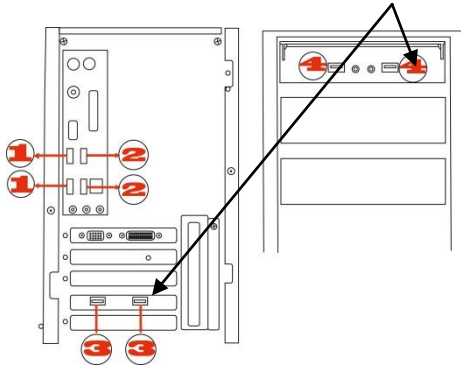
Before playing FPS games, you may use Armory in the HEADSHOT program to adjust firearms and save them to the mouse memory. Depending on FPS games and firearm features, there are “5-Gun-Adjust” modes you may select, e.g., [A-Burst], [B-Strafe], [C-Machine], [D-In_Game] and [M-Macro] respectively. For instance, in the game session while a gun or a rifle is picked up, without quitting the game, you may use [D-In_Game] mode to perform gun adjustments, to enhance the gun’s firepower with concentrated ballistics and improved accuracy to increase the headshot rate.



Notice: To ensure that your mouse/keyboard sends and receives perfectly, please read below instructions for your reference:

1 Avoid Interference from iron panel of PC.

Please plug the Dongle USB Ports.



3. Avoid using the wireless keyboard/mouse on a metal surface. Metals such as iron, aluminum, or copper shield the radio frequency transmission and slow down the response time of keyboard or mouse ,or cause the keyboard /mouse to fail temporarily.

4. If electromagnetic interference resulting from the use of shorter, you can add the following extend cable to reduce Receiver and Mouse distance, to modify quality of the received signals.



The radio frequency is 2.4GHZ, it is safe for our bodies, but please be cautious in using cardiac pacemaker or other body auxiliary instruments.

Troubleshooting

If the keyboard/mouse is not working:

1. Make sure the keyboard/mouse was paired .
2. Check battery power is full.
3. Check Dongle(receiver) installation.
4. Try another USB port.

Product Support

Need help with technical support? Please go to: <http://www.bloody.com> and our support team will respond within 72 hours.

**All pictures and description mentioned above is for reference only and is subject to change without notice.