

iSimple®

MediaWire™ PRO

Owner's Manual

A/V CABLE WITH REMOTE FOR YOUR iPhone or iPod

MAKE THE CONNECTION ►

to your

iPhone

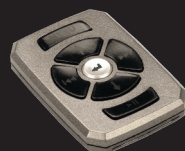
to your

iPod



iSimple®

A Division of AAMP of America™
13160 56th Court, Clearwater, FL 33760
866-788-4237
support@iSimpleSolutions.com
©2010 AAMP of Florida Inc.



• wireless remote



• remote holder



• audio / video output



• connection for iPod or iPhone

Video not intended to be in view of driver

REG. 04-19-10

1. Introduction

Thank you for purchasing the iSimple® MediaWire™PRO. This product is designed to provide endless hours of listening and viewing pleasure from your factory or aftermarket entertainment system. To ensure optimal performance of the MediaWire™PRO we recommend that you read this entire manual before beginning the installation of this product. The MediaWire™PRO provides connectivity between your iPod/iPhone and any audio or audio/video source that accepts RCA connections. Note: many factory radios require an auxiliary input device to accept an RCA connection. For video output, an iPod/iPhone with video capability is required. The MediaWire™PRO will also charge your iPod/iPhone while connected.

Visit <http://www.iSimpleSolutions.com> to see auxiliary input solutions for your radio.

2. Precautions

PREVENTING DAMAGE TO YOUR VEHICLE OR MEDIA PLAYER

Installation of this product requires you to make wiring connections. To eliminate the risk of an electrical short, we recommend disconnecting the vehicle's battery prior to installation. If you do not feel comfortable making these connections, we suggest you seek professional installation. We recommend that the iPod/iPhone be disconnected from the cable when the vehicle is not in use.

3. Installation

1. Using a voltmeter identify a 12V+ wire and a ground wire
2. Connect the red wire on the MediaWire™PRO to the 12V+ constant power wire (or you can connect the MediaWire™PRO red wire to a switched accessory wire to provide battery charging only when the vehicle is running).
3. Connect the black wire on the MediaWire™PRO to ground.
4. Plug the male RCA connector ends of the MediaWire™PRO into the receiver's auxiliary audio or A/V input.
5. Choose a convenient mounting location for your device. This is typically a glove box, center console or mounting cradle.
6. Run the docking cable and RCA connectors to the desired mounting location.
7. Securely install the cable in a location free from heat, humidity, moving parts, or sharp metal edges. We recommend securing the MediaWire™PRO to a suitable location using double sided tape, Velcro™ or zip-ties.

Accessing your auxiliary audio source

Please refer to the owners manual that came with your radio or vehicle for directions on how to access your radio's auxiliary input source.

On some iPod models you will need to enter the settings menu, and select video, select TV out, and set this option to "ASK". When a video is selected to play, the iPod will ask "do you want to enable TV out?" select on, to view video on an external screen using this product.

Some newer iPod/iPhone models do not have this option in the video settings menu. Instead, after connecting your iPod/iPhone to our product, and selecting a video to play, the device will ask you automatically "Display on TV?" Choose "YES" to watch the video on an external monitor.

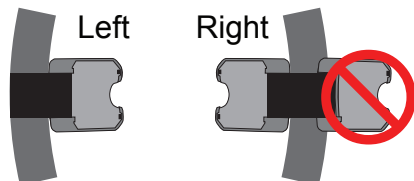
4. Mounting options

1. Dashboard: A strip of hook and loop tape has been provided if dash mounting of the WiFli™ remote is desired. Use the supplied alcohol prep. pad to clean the surface of the chosen mounting location for the remote. Allow surface to dry thoroughly before applying the hook and loop tape to ensure best performance.

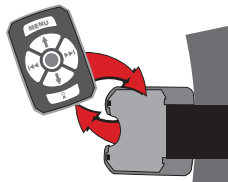
2. Steering Wheel Mounting: The WiFli™ mounting cradle is designed to fit snugly to your steering wheel for safe and convenient access. Using the supplied attaching strap, tighten the mounting cradle to the steering wheel. The mounting cradle can be installed on either the left or right side of the steering wheel.

Caution!

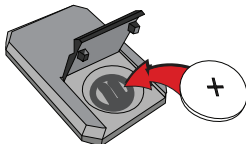
The WiFli™ mounting cradle gives you quick access to WiFli™ remote while keeping both hands on the wheel. It is designed to be attached to the inside of the steering wheel perimeter. Position the cradle in an open space so as not to interfere with the deployment of the airbag or other steering wheel operations. Improper installation may lead to injury in the event of airbag deployment.



Removing WiFli™ Remote from the Mounting Cradle: To remove the WiFli™ remote from the mounting cradle, push upwards gently on the remote by placing your finger inside the recess on the side of the mounting cradle.



4. Remote Control

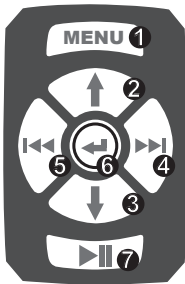


Battery installation

Before using your remote control with your device, Please first install the CR2025 Battery (included) into the remote as shown.

Operation

The wireless remote control is designed to give you access to your iPod or iPhone music library without handling your device. The remote will provide such controls as: track forward, and track back, as well as navigation through the iPod menus.



- 1) **MENU** same function as Menu on clickwheel
- 2) **↑** moves the cursor up in iPod Menu
- 3) **↓** moves the cursor down in iPod Menu
- 4) **▶▶** next track (press)
fast forward (hold)
- 5) **◀◀** previous track (press)
rewind (hold)
- 6) **↵** Enter / select option
- 7) **▶||** Toggles Play / pause

The RF receiver is built into the iSimple cable. So it is installed automatically when you connect power and ground from the vehicle, to this iSimple cable.

5. Troubleshooting

Symptom	Cause	Remedy
iPod/iPhone is not charging	Fuse is blown	Check the fuse in the power lead of the MediaWire™PRO. If the fuse is blown, replace with a fuse of the same amperage. If fuse blows again, please call tech support.
iPod/iPhone is not charging and fuse isn't blown	Weak wiring connection	Check the Power (RED) and Ground (BLACK) wires to ensure that they are correctly connected to 12V+ and Ground.
No video	iPod is not set for video out	In settings menu select Video Output ON.
No audio	RCA is not connected	Verify connection of RCA's to Receiver.
Remote does not control iPod	Battery Issue	Check that battery is installed correctly, and does not need to be replaced
	Transmission Interference	Re-route cable so that RF receiver is closer to front of dash (less obstructions)

6. Warranty

One Year Limited Warranty

The quality controls used in the manufacture of this product will ensure your satisfaction. This warranty applies only to the original purchaser of this product from an authorized iSimple® dealer. This warranty covers any supplied or manufactured parts of this product that, upon inspection by iSimple® authorized personnel, is found to have failed in normal use due to defects in material or workmanship. This warranty does not apply to installation expenses. Attempting to service or modify this unit, operating this unit under conditions other than the recommended voltage will render this WARRANTY VOID.

Unless otherwise prescribed by law, iSimple® shall not be liable for any personal injury, property damage and or any incidental or consequential damages of any kind (including water damage) resulting from malfunctions, defects, misuse, improper installation or alteration of this product. All parts of this iSimple® product are guaranteed for a period of 1 year as follows:

Within the first 12 months from date of purchase, subject to the conditions above, iSimple® will repair or replace the product at our discretion, if it is defective in material or workmanship providing it is returned to an Authorized iSimple™ dealer, with PROOF OF PURCHASE from an authorized iSimple® dealer.

Warning:

This equipment may be reset by unintentional electrostatic discharge during operation. Exposure to direct sunlight or extreme heat may cause damage or malfunction.

FCC Part 15 Radio Frequency Interference Statement

This device complies with part 15 of the FCC Rules. Operation is subject to the following two conditions:

- (1) This device may not cause harmful interference, and
- (2) this device must accept any interference received, including interference that may cause undesired operation.

If this equipment does cause harmful interference to radio or television reception, which can be determined by turning the equipment off and on, the user is encouraged to try to correct the interference by one or more of the following measures:

1. Re-orientate or relocate the receiving antenna
2. Increase the separation between the equipment and receiver
3. connect the equipment into an outlet on a circuit different from that of which the receiver is connected
4. Consult the dealer or an experienced radio/television technician for help.

Notice: The changes or modifications not expressly approved by the party responsible for compliance could void the user authority to operate the equipment.



A division of AAMP of America™
13160 56th Court Clearwater
Florida 33760
Ph. 866-788-4237
support@iSimpleSolutions.com
©2010 AAMP of Florida, Inc.
www.isimplesolutions.com



For Best Performance Have It
Professionally Installed.



"Made for iPod" and "Works with iPhone" means that an electronic accessory has been designed to connect specifically to iPod or iPhone, respectively, and has been certified by the developer to meet Apple performance standards. Apple is not responsible for the operation of this device or its compliance with safety and regulatory standards.

iPod and iPhone are trademarks of Apple Inc., registered in the U.S. and other countries.