

## WIRELESS PRO STEREO EARBUDS

### CHARGING THE EARBUDS

⚡ Charge the earbuds before using it for the first time.

🕒 Plug in the cable and charge for 1 hour.

🎵 If you hear a long beep, the earbuds need to be charged.



Connect the charging cable to charging ports

## WIRELESS PRO STEREO EARBUDS



Red is charging.



Blue is fully charged!

### USING EARBUDS AS A PAIR

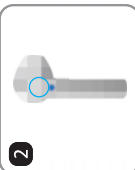
Your earbuds will work best if it is within 30 ft. of your smart device. You may experience the sound briefly cutting off if you are out of range or if your wireless connection is weak. If the earbuds are not paired with a device after 5 minutes, it will turn off automatically.

## WIRELESS PRO STEREO EARBUDS



1

Hold one button on two earbuds for 3 seconds until the red and blue light flash alternately.



2

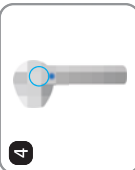
Double-click the button on the one of earbud to pairing and setting up the main headset. It will light begin to flash blue and red.

## WIRELESS PRO STEREO EARBUDS



3

Turn on Bluetooth on your phone or tablet. Choose "TW5-i7". Enter "0000" if asked. You're paired!



4

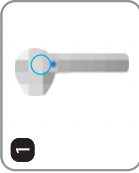
To turn ON/OFF press and hold the button on one earbud for 3 seconds.

## WIRELESS PRO STEREO EARBUDS

### USING EARBUDS FOR DIFFERENT DEVICES

The earbuds can be paired to different devices. For example, you can use one earbud with a smart phone and the other earbud for a tablet.

1 Turn on one earbud by pressing the "Power" button for 3 sec. The first earbud will "beep" when it is ready to pair. Leave the second earbud turned off. Pair one device at a time to your multiple devices.



## WIRELESS PRO STEREO EARBUDS



2

Select "TW5-i7" from the Bluetooth menu of your first device. Enter PIN code "0000" if asked. This earbud is ready to use.



3

To pair the other earbud, make sure your other wireless device is nearby. Choose "TW5-i7". Enter "0000" if asked. You're paired!

## WIRELESS PRO STEREO EARBUDS

### MUSIC CONTROLS

- Press the button once to pause your music.
- Volume control is only through your smart phone or wireless device.

### USING YOUR EARBUDS FOR CALLS

- Press the button once to answer or end call.
- Press the button twice to reject a call.
- When the headset is switched on and connected to the phone, press the button twice to dial the last call.

NOTE: When answering calls, the call can be heard and controlled from a single earbud only.

## WIRELESS PRO STEREO EARBUDS

### CONNECTION LOST?

- If only one earbud is working, press the other earbud for 3 seconds to reconnect.
- If pairing two earbuds does not work, turn off the earbuds and repeat the steps again in "Using earbuds as a pair".
- Make sure your earbuds are within range of your smart device.
- If you hear a long beep, you need to recharge your earbuds. Connection may be lost due to low battery.

### FCC Statement

Changes or modifications not expressly approved by the party responsible for compliance could void the user's authority to operate the equipment.

This equipment has been tested and found to comply with the limits for a Class B digital device, pursuant to Part 15 of the FCC Rules. These limits are designed to provide reasonable protection against harmful interference in a residential installation. This equipment generates uses and can radiate radio frequency energy and, if not installed and used in accordance with the instructions, may cause harmful interference to radio communications. However, there is no guarantee that interference will not occur in a particular installation. If this equipment does cause harmful interference to radio or television reception, which can be determined by turning the equipment off and on, the user is encouraged to try to correct the interference by one or more of the following measures:

- Reorient or relocate the receiving antenna.
  - Increase the separation between the equipment and receiver.
  - Connect the equipment into an outlet on a circuit different from that to which the receiver is connected.
  - Consult the dealer or an experienced radio/TV technician for help.
- This device complies with part 15 of the FCC rules. Operation is subject to the following two conditions: (1) this device may not cause harmful interference, and (2) this device must accept any interference received, including interference that may cause undesired operation.