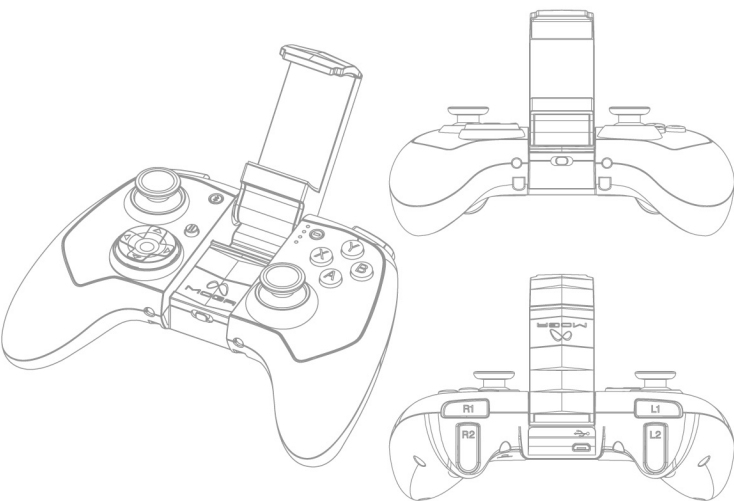
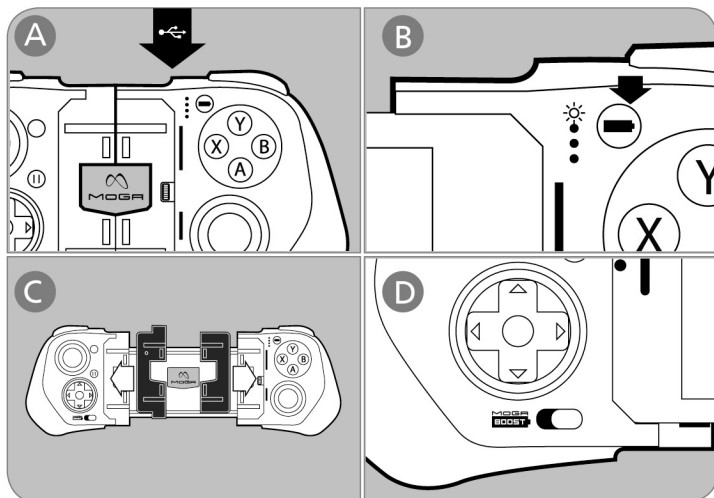


USER MANUAL

3-Year Limited Warranty: Visit MOGAAnywhere.com for details



DETAILED SETUP:

1. Before using your MOGA REBEL, fully charge it by plugging the included Micro-B cable into the Micro-B charging port on your MOGA REBEL controller and the other end to a powered USB input. Let it charge for 6 to 8 hours before using it for the first time.
2. To check the charging status of your MOGA Rebel controller, press the Battery Status button. The LED indicators light up according to the battery's charge level -- one LED lights up for 25% charge, two for 50%, three for 75%, and all four to indicate 100% charge.
3. Download and install the MOGA World app using the QR code provided, or from accessing the App Store and search for "MOGA World", or from visiting www.MOGAAnywhere.com/Worldapp on your devices web browser.
4. Unfold the MOGA Arm. Place your iPhone® or iPod touch® into the top of the MOGA Arm, gently push the arm open, and lock your device in place. If you are connecting your MOGA REBEL to an iPad®, we recommend using a tablet stand.
5. Access Settings in your Apple® device and make sure sure Bluetooth™ is turned on.
6. Slide the switch located under the MOGA Arm from Off to On.
7. Press the Bluetooth button. Once you press the Bluetooth button, your MOGA REBEL controller will enter into Discovery Mode. The LED indicators will flash while in Discovery Mode.
8. While accessing the Settings>Bluetooth section of your Apple device, your Apple device will begin to search for discoverable devices. You will see "MOGA REBEL" appear under the "Devices" heading. Tap on "MOGA REBEL" to pair your device. Once paired, your Apple device should show the "MOGA REBEL" as "Connected" and you may exit Settings. *Note: After first pairing, your Apple device will remember the MOGA REBEL controller. To play with the MOGA REBEL controller for all subsequent uses, you will only need to switch the Power Switch from Off to On and press the Bluetooth button to reconnect your controller to your Apple device. Before connecting the MOGA REBEL to another controller, unpair with the original Apple device by going to Bluetooth>Settings>MOGA REBEL>Forget this device.*
9. Launch the MOGA World app. MOGA World will give you a tutorial on how to use your controller and provides a list of games that are compatible with the MOGA REBEL controller.

SLEEP MODE:

In order to conserve battery power, the MOGA REBEL controller will go to sleep after 5 minutes of inactivity. To wake up your MOGA REBEL controller, either slide the Power Switch from Off to On or press the Battery Status button. Once awake, press the Bluetooth button to reconnect your MOGA REBEL controller to your Apple device.

COMPATIBILITY:

The MOGA REBEL controller is compatible with all iOS 7 or later devices, including the iPhone 5s, iPhone 5c, iPhone 5, iPhone 4S, iPad Air, iPad (2nd, 3rd, and 4th generation), iPad mini (1st and 2nd generation), and iPod touch 5th generation.

LED INDICATORS:

The LED indicators all flash in unison while the controller is in Discovery Mode. After pairing is complete, the LEDs are capable of displaying whether the controller is the first, second, third, or fourth controller paired to the mobile device (If this has been implemented within the game app). While charging your controller, the LED indicators will flash five times in unison when you press the Battery Wake / Status button. To check the battery level of your controller, press the Battery Status button. The LED indicators light up according to the battery's charge level in 25% increments -- one LED lights up for 25% charge, two for 50%, three for 75%, and all four to indicate 100% charge. To check the battery level of your controller, press the Battery Status button. When the controller is not charging it will display the battery status for approximately three seconds. When the battery level of your controller is low, the bottom LED will begin to flash to indicate low battery status. The Battery Status button will not operate when your controller is off. In sleep mode, pressing the Battery Status button will wake up your MOGA REBEL controller.

TROUBLESHOOTING:

For answers to more frequently asked questions, visit www.MOGAAnywhere.com/support.

- Q: My MOGA REBEL is not powering on.
A: Confirm the internal battery of your MOGA REBEL is charged by pressing the Battery Status button. You may need to charge your controller prior to use.
- Q: I am having trouble pairing my MOGA REBEL.
A: First, try again. If the LED status indicators stop flashing, press the Bluetooth button. If your MOGA still won't pair, turn the Power Switch Off then Back to On. Once you see the LEDs flash blue, try to pair again under the Apple device Bluetooth Settings. Make sure your controller is not paired with any other devices.
- Q: I want to pair my MOGA REBEL to another compatible Apple device, but it keeps repairing with my original device.
A: You must always unpair your MOGA REBEL before pairing with another device. Access Settings>Bluetooth of your original device. Next to "MOGA REBEL" will be a small "i". Tap on the "i" and click "Forget this Device", then confirm. You can then pair your MOGA REBEL to another compatible Apple device.

Q: My controller seems to have stopped working all together.

A: First, access the MOGA World app to ensure that your controller is still not working, there is a small reset button located on the back of the controller. Insert a paperclip into the reset hole and push down--you will feel the reset button depress. The MOGA REBEL controller will reset, and functionality should restore.

CARE AND MAINTENANCE

This device complies with Part 15 of the FCC Rules. Operation is subject to the following two conditions: (1) this device may not cause harmful interference, and (2) this device must accept any interference received, including interference that may cause undesired operation. Warning: Changes or modifications to this unit not expressly approved by the party responsible for compliance could void the user's authority to operate the equipment.

FCC STATEMENT:

This device complies with Part 15 of the FCC Rules. Operation is subject to the following two conditions: (1) this device may not cause harmful interference, and (2) this device must accept any interference received, including interference that may cause undesired operation. Warning: Changes or modifications to this unit not expressly approved by the party responsible for compliance could void the user's authority to operate the equipment.

Note: This equipment has been tested and found to comply with the limits for Class B digital device, pursuant to Part 15 of the FCC Rules. These limits are designed to provide reasonable protection against harmful interference in a residential installation. This equipment generates, uses, and can radiate radio frequency energy and, if not installed and used in accordance with the instructions, may cause harmful interference to radio communications. However, there is no guarantee that interference will not occur in a particular installation. If this equipment does cause harmful interference to radio or television reception, which can be determined by turning the equipment off on, the user is encouraged to try to correct the interference by one or more of the following measures:

- Reorient or relocate the receiving antenna.
- Increase the separation between the equipment and receiver.
- Connect the equipment into an outlet on a circuit different from that to which the receiver is connected.
- Consult the dealer or an experienced radio/TV technician for help.

This Class B digital apparatus complies with Canadian ICES-003.

MOGA and the MOGA logo are trademarks of Bensusen Deutsch and Associates, Inc. TM and © Bensusen Deutsch and Associates, Inc.

The Bluetooth® word mark and logos are registered trademarks owned by Bluetooth SIG, Inc. and any use of such marks by MOGA is under license.

iPad, iPhone, and iPod touch are trademarks of Apple Inc., registered in the U.S. and other countries.

All other trademarks are property of their respective owners.

IC STATEMENT:

This device complies with Industry Canada licence-exempt RSS standard(s). Operation is subject to the following two conditions: (1) this device may not cause interference, and (2) this device must accept any interference, including interference that may cause undesired operation of the device.

Le présent appareil est conforme aux CNR d'Industrie Canada applicables aux appareils radio exempts de licence. L'exploitation est autorisée aux deux conditions suivantes:

- (1) L'appareil ne doit pas produire de brouillage, et
- (2) l'utilisateur de l'appareil doit accepter tout uillage radioélectrique subi, même si le brouillage est susceptible d'en compromettre le fonctionnement.