

User manual



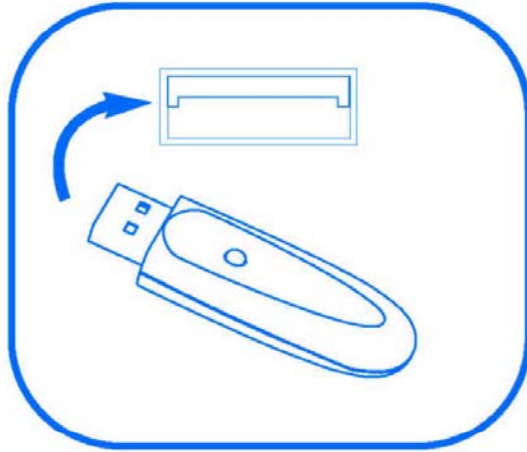
PocketMouse™ Mini Wireless Manual



Index

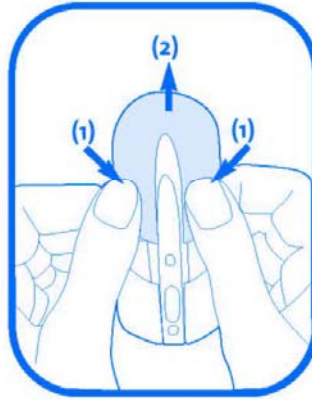
| | |
|----------------------------------|----------|
| Plugging In Your Device | page 1 |
| Battery Installation | page 2 |
| Wireless Installation | page 3 |
| Common Troubleshooting Steps ... | page 4 |
| Comfort Guidelines | page 5 |
| Technical Support | page 6 |
| Warranty Information | page 7-8 |

Plugging In Your Device



1

Battery Installation

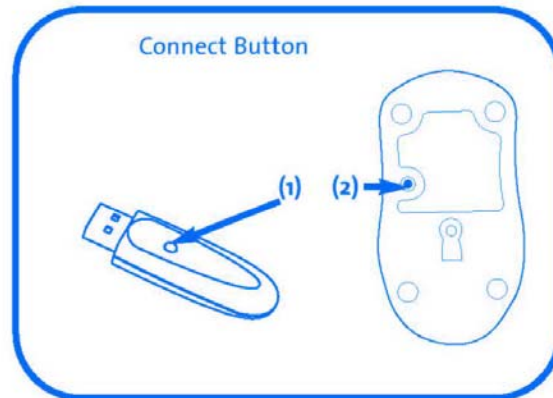


Remove top case (battery cover) and insert batteries. To remove top case, push down (1) and slide the case back (2).

To save battery power, turn off the mouse when not in use by pressing the scroll wheel button and the mouse connect button at the same time. Repeat to turn mouse back on.

Note: The mouse goes into standby mode after several minutes of inactivity. This extends the battery life of the mouse. To wake the mouse up again, simply click any button.

Wireless Installation



To establish a wireless connection, press the connect button on the receiver (1). Then, press the connect button on the bottom of the mouse (2). Repeat this procedure when replacing the batteries.



IMPORTANT: This wireless device is similar to an FM radio, by adjusting the antenna you can get better reception. You may also want to experiment with different locations and positions of the receiver.

Common Troubleshooting Steps

1. Plug and re-plug mouse.
2. Test the device on another computer.
3. Some surfaces may “trick” the optical sensor, such as high gloss wood, and reflective surfaces like glass or mirrors. The ideal surface is a bright white surface (such as a piece of paper).
4. If you would like to program buttons, adjust acceleration control or set a rest reminder, please visit www.software.kensington.com to download the latest MouseWorks® software.
5. To establish a wireless connection, see instructions on Page 3
6. To save battery power, turn off the mouse when not in use by pressing the scroll wheel button and the mouse connect button at the same time.
7. If you are having trouble with the battery cover case, please see instructions on Page 2.

Comfort Guidelines



Please visit HealthyComputing.com for very important safety tips when using this device.



Important: Computer User Health Information

In recent years, medical attention on occupational injuries has identified normal, seemingly harmless activities as a potential cause of a wide range of problems collectively known as Repetitive Stress Injuries (RSI) or Cumulative Trauma Disorders (CTD). It is now recognized that any repetitive motion may contribute to these health problems. As a computer user, you might also be at risk.

By paying attention to the way you perform your work, use your computer and phone, play sports, and work around the house, you can identify the behaviors that may be putting you at risk. If you experience pain, swelling, numbness, or weakness in your wrists or hands (especially during sleep), see your physician immediately. These symptoms could mean that you are developing a repetitive stress injury that requires prompt medical attention. For more detailed information, consult your doctor, www.HealthyComputing.com or a reputable book.

Technical Support

In North America, technical support is available to all registered users of Kensington products. There is no charge for technical support except long distance charges where applicable.

Technical Support Tips:

- You may find the answer to your problem in the Frequently Asked Questions (FAQ) section of the Support area on the Kensington Web site:
www.support.kensington.com
- Call from a phone where you have access to your computer.
- Be prepared to provide the following information:
 1. Name, address and telephone number
 2. The name of the Kensington product
 3. Make and model of your computer
 4. Your system software and version
 5. Symptoms of the problem and what led to them

Warranty Information

1-Year Warranty

KENSINGTON COMPUTER PRODUCTS GROUP, ("KENSINGTON") warrants this PRODUCT against defects in material and workmanship under normal use and service for one year from the original date of purchase. KENSINGTON, at its option, shall repair or replace the defective unit covered by this warranty. Please retain the dated sales receipt as evidence of the date of purchase. You will need it for any warranty service.

In order to keep this warranty in effect, the product must have been handled and used as prescribed in the instructions accompanying this warranty. This warranty does not cover any damage due to accident, misuse, abuse, or negligence. This warranty is valid only if the product is used on the computer or system specified on the product box. Please check product box for details or call technical support.

Repair or replacement, as provided under this warranty, is your exclusive remedy. KENSINGTON shall not be liable for any incidental or consequential damages. Implied warranties of merchantability and fitness for a particular purpose on this product are limited in duration to the duration of this warranty.

Some states/countries do not allow the exclusion or limitation of incidental or consequential damages, so the above limitation or exclusion may not apply to you. Some states/countries do not allow limitations on how long an implied warranty lasts, so the above limitation may not apply to you. This warranty gives you specific legal rights, and you may also have other rights that vary from state to state and country to country.

Federal Communications Commission Radio Frequency Interference Statement

Note: The Kensington PocketMouse™ Mini Wireless has been tested and found to comply with the limits for a Class B digital device, pursuant to Part 15 of the FCC Rules. These limits are

Warranty Information (continued)

designed to provide reasonable protection against harmful interference in a residential installation. This equipment generates, uses and can radiate radio frequency energy and, if not installed and used in accordance with the instructions, may cause harmful interference to radio communications.

However, there is no guarantee that interference will not occur in a particular installation. If this equipment does cause harmful interference to radio or television reception, which can be determined by turning the equipment off and on, the user is encouraged to try to correct the interference by one or more of the following measures:

- Reorient or relocate the receiving antenna.
- Increase the separation between the equipment and receiver.
- Connect the equipment into an outlet on a circuit different from that to which the receiver is connected.
- Consult the dealer or an experienced radio/TV technician for help.

MODIFICATIONS: Modifications not expressly approved by Kensington may void the user's authority to operate the device under FCC regulations and must not be made.

SHIELDED CABLES: In order to meet FCC requirements, all connections to equipment using a Kensington input device should be made using only the shielded cable provided.

Declaration of Conformity Compliance Statement for the Kensington PocketMouse™

The Kensington PocketMouse™ Mini Wireless (72214) complies with Part 15 of the FCC Rules. Operation is subject to two conditions: (1) This device may not cause harmful interference, and (2) this device must accept any interference received, including interference that may cause undesired operation. As defined in Section 2.909 of the FCC Rules, the responsible party for this device is **Kensington Computer Products Group**, 2000 Alameda de las Pulgas, Second Floor, San Mateo, CA 94403, (650) 572-2700.

The Following Information is Only for EU-member States:



The use of the symbol indicates that this product may not be treated as household waste. By ensuring this product is disposed of correctly, you will help prevent potential negative consequences for the environment and human health, which could otherwise be caused by inappropriate waste handling of this product. For more detailed information about recycling of this product, please contact your local city office, your household waste disposal service or the shop where you purchased the product.

Les informations suivantes sont applicables uniquement dans les pays membres de l'Union Européenne :



L'utilisation de ce symbole indique que ce produit ne peut pas être traité comme un déchet ménager ordinaire. En vous débarrassant de ce produit dans le respect de la réglementation en vigueur, vous contribuez à éviter les effets négatifs potentiels sur l'environnement et sur la santé humaine. Pour plus de détails sur le recyclage de ce produit, veuillez consulter le service municipal compétent, le service de ramassage des ordures ou le revendeur du produit.

Die folgenden Informationen betreffen nur Mitgliedsstaaten der EU:



Die Verwendung des Symbols gibt an, dass dieses Produkt nicht als Hausmüll behandelt werden darf. Durch das Sicherstellen der korrekten Beseitigung dieses Produkts tragen Sie dazu bei, mögliche negative Auswirkungen auf die Umwelt und die Gesundheit von Menschen zu vermeiden, die anderenfalls bei ungeeigneter Beseitigung dieses Produkts hervorgerufen werden können. Detaillierte Informationen zur Wiederverwertung dieses Produkts erhalten Sie bei den örtlichen Behörden, bei dem für Ihren Wohnsitz zuständigen Wertstoffverwerter bzw. dem Geschäft, in dem Sie dieses Produkt erworben haben.

De volgende informatie is alleen van toepassing op lidstaten van de EU:



Het gebruik van het pictogram geeft aan dat dit product niet als huishoudelijk afval mag worden beschouwd. Door dit product op de juiste wijze weg te werpen, helpt u het voorkomen van mogelijke negatieve gevolgen voor het milieu en de volksgezondheid, die anders mogelijk worden veroorzaakt door een onjuiste afvalverwerking van dit product. Neem voor meer gedetailleerde informatie over het recycleren van dit product contact op met de afvalverwerking in uw plaats, de dienst voor verwerking van huishoudelijk afval of de winkel waar u dit product hebt aangeschaft.

Le informazioni seguenti riguardano esclusivamente gli stati membri dell'Unione Europea



L'uso di questo simbolo indica che il prodotto non può essere trattato come rifiuto domestico. Garantendo un corretto smaltimento di questo prodotto si contribuisce a evitare potenziali danni all'ambiente e alla salute, che potrebbero altrimenti essere causati dallo smaltimento errato del prodotto. Per informazioni più dettagliate sul riciclaggio di questo prodotto, rivolgersi all'apposito ufficio locale, al servizio di smaltimento dei rifiuti domestici o al negozio in cui è stato acquistato il prodotto.

La información siguiente solo se aplica a los Estados miembros de la Unión Europea:



La utilización del símbolo indica que el producto no se puede eliminar como cualquier otro residuo doméstico. Si garantiza la eliminación correcta del producto, contribuirá a prevenir eventuales consecuencias negativas para el medio ambiente y la salud humana, las cuales podrían ser ocasionadas por la eliminación inadecuada del producto. Para obtener más información acerca del reciclaje del producto, póngase en contacto con las autoridades locales, el servicio de recogida de basuras o el establecimiento donde adquirió el producto.

Contacting Kensington

Troubleshooting information and answers to frequently asked questions are available 24 hours a day on the Kensington Web site at www.support.kensington.com.

Support by Telephone

Technical Support is available by telephone. Please visit www.kensington.com for hours.

US/Canada 800-535-4242 or 650-572-2700

Mexico 52(55)5384-0620

333 Twin Dolphin Drive, 6th floor
Redwood Shores, CA 94065

ACCO Brands Canada Inc.
5 Precidio Court
Brampton, Ontario
L6S 6B7 CANADA

ACCO Brands Europe Inc.
Oxford house, Oxford Road
Aylesbury, Bucks
HP21 8SZ
UNITED KINGDOM

www.kensington.com

This manual is copyright ©2003 **Kensington Computer Products Group**, a division of ACCO Brands, Inc. Any unauthorized copying, duplicating, or other reproduction of the contents hereof is prohibited without written consent from **Kensington Computer Products Group**. All rights reserved. 11/03
Kensington is a registered trademark of ACCO World Corporation. All other registered and unregistered trademarks are the sole property of their respective owners.

906-0516-01