

M01243 User manual

1、 Contents

- 1.1、 Bluetooth keyboard 1PCS
- 1.2、 Instruction manual 1PCS
- 1.3、 USB Charging cable 1PCS

2、 Product Features

- 2.1、 use Broadcom20730 main control chip, have Bluetooth3.0 interface.
- 2.2、 industry leading bluetooth solutions, WIDCOMM BTW (Microsoft officially designated software) bluetooth software.
- 2.3、 built-in power management software, can be in Microsoft's Windows system automatically usable capacity
- 2.4、 Put the magnet between the keyboard and leather case. The keyboard and leather case can be separated use.
- 2.5、 Mute design: effectively avoid other person sleeping(especially for one room with several person).
- 2.6、 Architecture design, provides comfortable handling feel
- 2.7、 Caps lock signal helps in capital letters writing
- 2.8、 Support Iphone, Mac, Windows and Android system etc. It's more convenient for you.

3、 Specifications

- 3.01、 Executive standard: Bluetooth V3.0
- 3.02、 Maximum operating distance: 10 meters
- 3.03、 (FHSS) Modulation mode: 2.4 G straight sequence fh (FHSS)
- 3.04、 Transmit power: Class 2 levels
- 3.05、 Working voltage: 3.7V
- 3.06、
 - Turn on the LED backlight:98mA
 - Turn off the backlight: 3.0mA
- 3.07、 standby current: 1.5MA
- 3.08、 Sleep current: 95uA
- 3.09、 charging current: 300mA
- 3.10、 standby time: 600days
- 3.11、 theoretical use time
 - Turn on the LED backlight:3-4 days
 - Turn off the backlight 120 days
- 3.12、 continuous uninterrupted use time
 - Turn on the LED backlight: 15hours
 - Turn off the LED backlight: 500hours
- 3.13、 theoretical charging time: 5 - 6 hours
- 3.14、 lithium battery capacity:1500mAh
- 3.15、 lithium battery life span: three years
- 3.16、 the lithium battery type: 3135130
- 3.17、 the key dynamics: 60 + 10g
- 3.18、 buttons life: 5 million times
- 3.19、 operation temperature: 0-55 °C
- 3.20、 storage temperature: - 20-70 °C

4、 Keyboard and IPAD or Iphone setting

4.1、 Built in lithium battery with bluetooth and connect with IPAD, mobilephone or PC.

- 4.1.1、 Below information will show you how to using, setting and charging.

4.2、Indicator

4.2.1、The LED indicator on the keyboard show battery, state and charge. If you turn on the keyboard first time, the power indicator constant light and the bluetooth indicator light 3 seconds. The battery is good. After 3 seconds, if keyboard didn't match the IPAD, mobilephone and PC, the indicator will twinkle. The keyboard is searching and ready to match IPAD, mobilephone and PC etc.(Match means wireless connect with IPAD, mobilephone and PC, and ready to correspondence.)

4.2.2、If you don't put the keyboard match the IPAD, mobilephone and PC etc within 10 minutes. The light of power and bluetooth will colsed. The keyboard be turned off.

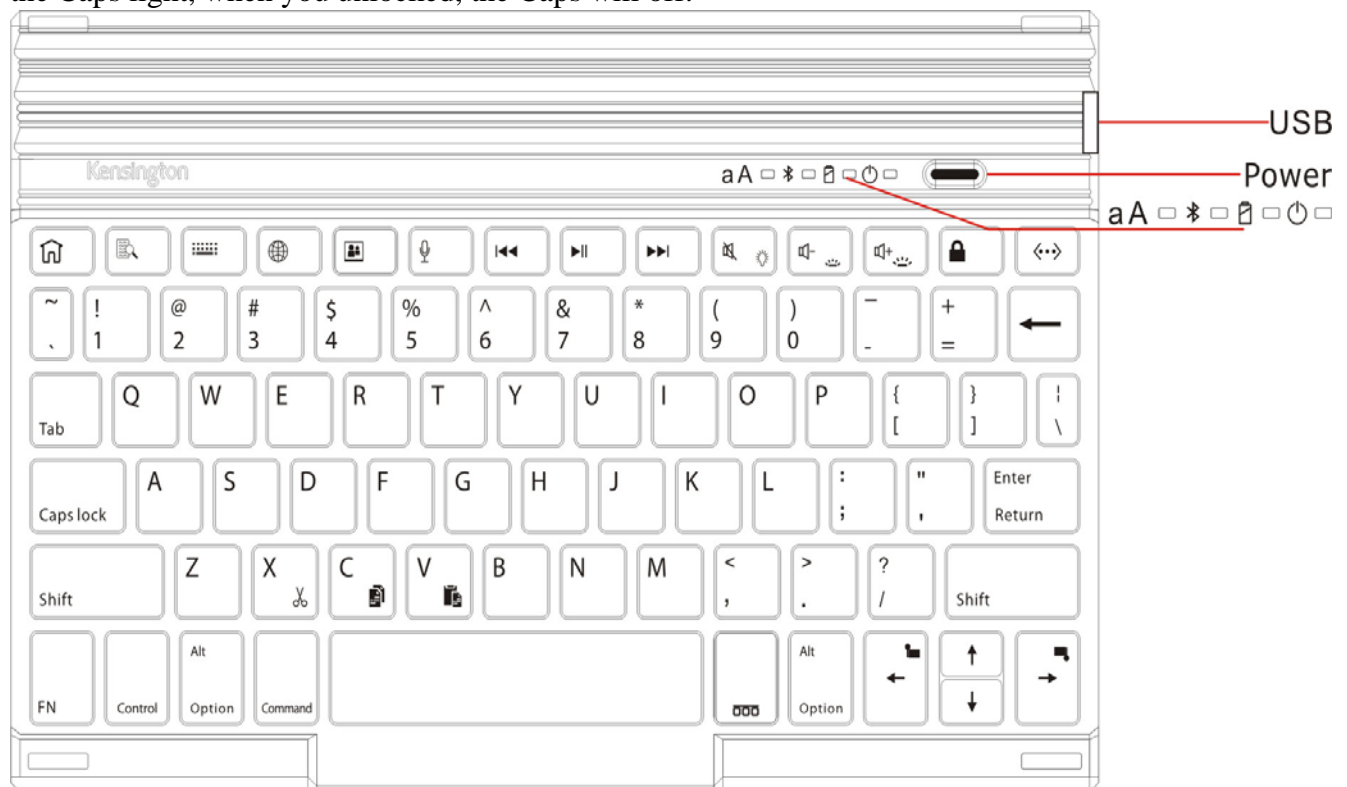
4.2.3、The keyboard and IPAD, mobilephone and PC matched success, the light of bluetooth off, the power constant light.

4.2.4、When the keyboard and IPAD, mobilephone and PC match success and can use. If you don't use the keyboard over 15minutes, the light of power will off, the keyboard sleeping. When you want to use the keyboard again, you just press any button softly. The power will light again, you can use the keyboard.

4.2.5、When you use the keyboard in the process, if the power light, advise you the battery is less than 5%, you need charging.

4.2.6、Plug the charger into the charging interface. The charge light. If the battery is full enough, the charge will cut off automatically.

4.2.7、When you use the keyboard in the process, you lock the upper and lowercase letters, the Caps light, when you unlocked, the Caps will off.



4.3、 the keyboard with new IPAD and IPHONE connection:

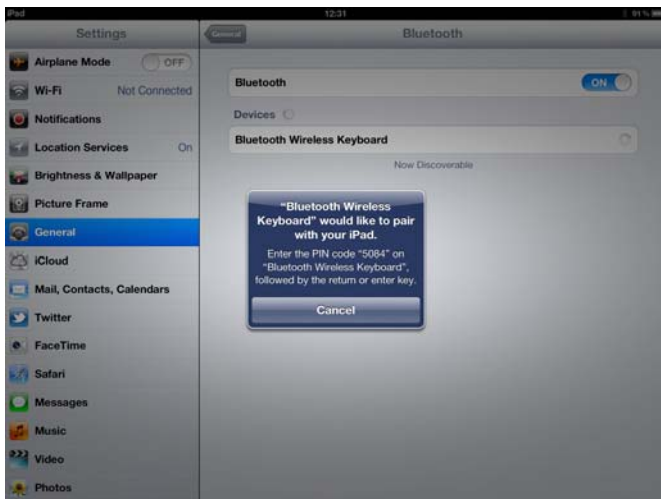
4.3.1、Press the switch about 1.5 seconds, power LED and Bluetooth LED light up about 2 seconds at the same time, the keyboard is turn on. Then the Bluetooth LED flash and enter the status of match code.

4.3.2、Click the setting button of IPAD and IPHONE, Then choose the General and bluetooth. The IPAD is searching bluetooth device.



4.3.3、 After the IPAD and IPHONE find out the bluetooth device and connect the bluetooth keyboard(see blow picture), IPAD will advise you input the password.





4.3.4、 according to the IPAD advise. Please note there are no advise during the input. Please make sure input correct and press enter button.

4.3.5、 If IPAD and keyboard connect success. the power constant light. Power constant light advise you turn off the keyboard while you don't use it.

4.4、 keyboard with other IPAD or IPHONE connection:

4.4.1 After your keyboard connect with 1PCS of IPAD or IPHONE, you can connect with other IPAD or IPHONE .If your keyboard connected with IPAD or IPHONE over 10 meters(33 feet).Please according to item3.3.

4.4.2 If your keyboard connected with IPAD or IPHONE within 10 meters(33 feet). You must cut off the current connect first, then try to connect with other IPAD and Iphone.

4.4.3、 Cut off the connection:

4.4.3.1、 Please touch the setting button on the connected IPAD and IPHONE. Choose the General and bluetooth.

4.4.3.2、 Please find out the keyboard you want to remove in the bluetooth, then click(>)button, you will log into the bluetooth settings .

4.4.3.3、 Choose Forget this device in the bluetooth settings, then click OK button.


4.4.4、 If you want to the keyboard match with other IPAD or IPHONE. Please according to item3.4

4.5、 The keyboard with new PC, MAC or mobilephone Connection.


4.5.1、 The new PC, MAC or mobilephone setting procedure same as PC, MAC and mobilephone.

4.5.2、 Please according to item3.4 to set the keyboard.

5、 Charging

When you use the keyboard in the process, the keyboard of POWER () instructions parade into rapid flashes state, right now you keyboard's electricity shortage, you should give your keyboard charging, charging steps as follows:

5.1、 Please take charge line attached to the USB male seat end insert computer USB interface or USB interface of the IPAD charger, the other side is inserted into the USB charging interface, MINI5PIN keyboard.

5.2、 When , the indicator will light, when the batteries full, the indicator will cut off automatically. (theory charging time for 3.5 hours)

6、 Keyboard and iPad hotkeys specifies



Press this button can return home page



IPAD in boot state, press this button can enter the IPAD search page



When in use IPAD edit the document by this button to call up and hidden IPAD virtual keyboard,



Press this button can change the languages.



IPAD locked in on this key, IPAD into the screen saver pictures interface



This is Siri function



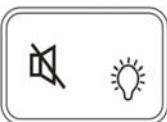
When the IPAD in music broadcast, click this button can control music upgrade



IPAD in boot state, press this button can control the play/pause music,



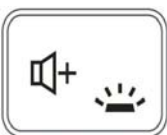
When the IPAD in music broadcast, click this button can control music downwards



Press this button, Ipad will be mute, turn on the LED backlight, hold on “FN” and click this button can change the backlight color of IPAD.



Press this button can decrease the volume, hold on FN and click this button can close the LED backlight and decrease the LED brightness.



Press this button can increase the volume, hold on FN and click this button can close the LED backlight and increase the LED brightness.



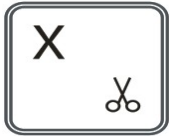
Press this button can lock IPAD screen,



Press this button 2 seconds, connecting with ipad



This is background process



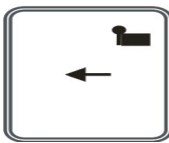
When you edit word, press “FN” and this key, It is cut function



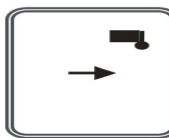
When you edit word, press “FN” and this key, It is copy function



When you edit word, press “FN” and this key, It is paste function



When you edit word, press “FN” and this key, It is left function



When you edit word, press “FN” and this key, It is right function

7、 Storage.

7.1、 when you have finished using your keyboard or you need to carry the keyboard, please don't forget when the keyboard source switch to OFF place, closed keyboard power, to extend battery life.

7.2、 when you need long time battery storage for your keyboard, please don't forget to put a battery power charger to a half, about charging 1 hour, then store your keyboard, this can help the lithium-ion batteries live longer

8、 Troubleshooting

8.1、 Keyboard and IPAD cannot establish connections:

8.1.1、 please check your IPAD bluetooth device is already open and went in search of state.

8.1.2、 hold and release the keyboard after Bluetooth keyboard pairing button, a flashing lights state.

8.1.3、 keyboard and Ipad connected in 10 metres from working range

8.1.4、 Ipad bluetooth devices have change, if there is a need to match again.

8.1.5、 your Ipad bluetooth device is also connected to the other bluetooth terminal and confirm Ipad bluetooth device speed.

8.1.6、 check your battery, if there is electricity shortage, please charge.



8.2、 Rechargeable lights not bright when

8.2.1、 Check the charger or if you are using computer USB port have voltage output, recommend replacing charger or computer USB port

8.2.2、 check whether the two ends of the charging line connected.

8.2.3、 batteries have been filled, temporary not need to recharge

8.2.4、 sent to the designated thrusters for repair

This device complies with Part 15 of the FCC Rules Operation is subject to the following tow conditions:

- 1、 This device may not cause harmful interference
- 2、 This device must accept any interference received, including interference that may caus undesired operation.

Note: This equipment has been tested and found to comply with the limits for a Class B digital device, pursuant to part 15 of the FCC Rules. These limits are designed to provide reasonable protection against harmful interference in a residential installation. This equipment generates, uses and can radiate radio frequency energy and, if not installed and used in accordance with the instructions, may cause harmful interference to radio communications. However, there is no guarantee that interference will not occur in a particular installation. If this equipment does cause harmful interference to radio or television reception, which can be determined by turning the equipment off and on, the user is encouraged to try to correct the interference by one or more of the following measures:

—Reorient or relocate the receiving antenna.

—Increase the separation between the equipment and receiver.

—Connect the equipment into an outlet on a circuit different from that to which the receiver is connected.

—Consult the dealer or an experienced radio/TV technician for help.

The device complies with industry Canada license-exempt RSS standard(s). Operation of this device is subject to the following two conditions: (1) this device may not cause interference, and (2) this device must accept any interference, including interference that may cause undesired operation of the device.

Le présent appareil est conforme aux CNR d'Industrie Canada applicables aux appareils radio exempts de licence. L'exploitation est autorisée aux deux conditions suivantes : (1) l'appareil ne doit pas produire de brouillage, et (2) l'utilisateur de l'appareil doit accepter tout brouillage radioélectrique subi, même si le brouillage est susceptible d'en compromettre le fonctionnement."

This Class [B] digital apparatus complies with Canadian ICES-003.

Cet appareil numérique de la classe [B] est conforme à la norme NMB-003 du Canada.

changes or modifications not expressly approved by the party responsible for compliance could void the user's authority to operate the equipment.