

DigiMemo L2 / A402

Digital Notepad with Memory

Digitally capture & store everything you write with ink on ordinary paper.



User Guide

ACECAD®

Federal Communications Commission (FCC) Radio Frequency Interference Statement

This equipment has been tested and found to comply with the limits for a Class B digital device, pursuant to Part 15 of the FCC Rules. These limits are designed to provide reasonable protection against harmful interference in a residential installation. This equipment generates, uses, and can radiate radio frequency energy and, if not installed and used in accordance with the instructions, may cause harmful interference to radio communications. However, there is no guarantee that interference will not occur in a particular installation. If this equipment does cause harmful interference to radio or television reception, which can be determined by turning the equipment off and on, the user is encouraged to try to correct the interference by one or more of the following measures:

- Reorient or relocate the receiving antenna.
- Increase the separation between the equipment and receiver.
- Connect the equipment to an outlet on a circuit different from that to which the receiver is connected.
- Consult the dealer or an experienced radio/TV technician for help.

The user should not modify or change this device without written approval from ACE CAD Enterprise Co., Ltd. Modification could void authority to use this equipment.

Trademark Information

ACECAD and ACECAT are registered trademarks of ACE CAD Enterprise Co., Ltd.

Microsoft and Windows are registered trademarks of Microsoft Corporation.

SanDisk is a registered trademark of SanDisk Corporation.

Pentium is a registered trademark of Intel Corporation.

Internet is a trademark of Digital Equipment Corporation.

Adobe and Acrobat are registered trademarks of Adobe Systems Inc.

All other trademarks are the property of their respective owners.

Copyright Notice

©2006 ACE CAD Enterprise Co., Ltd. All rights reserved. No part of this publication may be reproduced, stored in a retrieval system, or transmitted, in any form or by any means (electronic, mechanical, photocopying, recording, or otherwise), without the prior written permission of the publisher.

GETTING STARTED.....	1
EQUIPMENT CHECKLIST	1
THE PARTS OF THE DIGITAL PAD	2
INSTALLING THE BATTERIES INTO THE DIGITAL PAD	3
INSTALLING THE BATTERY INTO THE DIGITAL INKING PEN.....	3
PUTTING A NOTEPAD OR PAPER ON THE DIGITAL PAD.....	4
THE WRITING AREA AND THICKNESS.....	4
STORAGE DEVICE IN THE DIGITAL PAD	5
WRITING AND RECORDING YOUR HANDWRITTEN NOTES	6
TURNING ON THE DIGITAL PAD	6
CHANGING THE CURRENT DIGITAL PAGE	7
THE PEN ICON.....	7
WRITING YOUR NOTES ON A NEW PAGE	7
WRITING YOUR NOTES ON A PAGE ALREADY WITH CONTENTS.....	8
ERASING A DIGITAL PAGE ON THE DIGITAL PAD	8
TURNING OFF THE DIGITAL PAD	9
SETTING THE DATE AND TIME	9
LOW BATTERY INDICATION ON THE DIGITAL PAD.....	10
NOTES ON REPLACEMENT OF BATTERIES IN THE PAD.....	10
NOTES ON USE OF THE SD MEMORY CARD	10
FULL MEMORY INDICATION	10
ORGANIZING YOUR NOTES IN WINDOWS	11
INSTALLING THE DIGI MEMO MANAGER SOFTWARE	11
CONNECTING THE DIGITAL PAD TO YOUR COMPUTER.....	13
CREATING YOUR E-BOOK FILE	13
<i>Toolbars.....</i>	<i>13</i>
<i>Importing Your Digital Pages.....</i>	<i>14</i>
<i>Saving an e-Book File</i>	<i>16</i>
<i>Saving a Copy of an e-Book File.....</i>	<i>16</i>
<i>Opening an e-Book File.....</i>	<i>16</i>
<i>Creating a New e-Book File</i>	<i>16</i>
<i>Printing an e-Book file</i>	<i>17</i>
EDITING YOUR E-BOOK FILE	17
<i>Zooming in and Zooming out</i>	<i>17</i>
<i>Inserting a Text Box.....</i>	<i>17</i>
<i>Editing an Existing Text Box.....</i>	<i>17</i>
<i>Drawing a Freeform Line and Writing.....</i>	<i>18</i>
<i>Drawing a Straight Line.....</i>	<i>18</i>
<i>Drawing a Highlighting and Freeform Line.....</i>	<i>18</i>
<i>Drawing a Highlighting and Straight Line.....</i>	<i>18</i>
<i>Erasing Objects</i>	<i>18</i>
<i>Undoing the Last Action.....</i>	<i>18</i>

<i>Selecting Objects</i>	19
<i>Resizing Objects</i>	19
<i>Moving Objects</i>	19
<i>Deleting Objects</i>	19
<i>Copying or Moving Objects</i>	20
<i>Changing the Color and Width of Objects</i>	20
<i>Adding a New Page</i>	21
<i>Setting the Default New Page Size</i>	21
<i>Moving the Current Page</i>	21
<i>Removing the Current Page</i>	21
<i>Showing the Background of Pages</i>	22
<i>Switching the Current Page by Keyboard Shortcuts</i>	22
<i>Saving the Current Page as an Image File</i>	22
<i>Sample of an Edited e-Book File</i>	23
ON-LINE WRITING YOUR NOTES	23
<i>Causes of the On-line Writing Function Disabled or Closed</i>	25
SENDING YOUR E-BOOK FILE IN E-MAIL	25
CONVERTING YOUR HANDWRITTEN NOTES IN YOUR E-BOOK FILE	27
USING ANOTHER OPTIONAL CARD READER	27
EASILY MANAGING DIGITAL PAGE FILES	27
<i>Deleting the Digital Pages in the DigiMemo Manager</i>	28
TABLET DEVICE IN WINDOWS	30
APPENDIXES	31
REPLACING THE CARTRIDGE OF THE DIGITAL PEN.....	31
<i>Purchasing New Replacement Ink Cartridges</i>	31
REPLACING THE BATTERY IN THE DIGITAL PEN	32
REMOVING THE DIGI MEMO MANAGER SOFTWARE IN WINDOWS	32
CARING FOR THE DIGI MEMO	32
ERROR CODES ON THE DISPLAY OF THE DIGITAL PAD.....	33
<i>The Malfunction of the Built-in 32 MB Storage Device — the Error Code E04</i> ..	33
<i>The File System Incompatibility of an Optional SD Memory Card — the Error Code E02</i>	34
<i>The Damage or Incompatibility of an Optional SD Memory Card — the Error Code E01</i>	34
<i>The Full Root Directory — the Error Code E06</i>	34
<i>The Damage of the Digital Pad — the Error Code E03 or E05</i>	35
TROUBLESHOOTING.....	35
<i>General Problems</i>	35
<i>Problems in the DigiMemo Manager Software</i>	37
<i>Problems When Connecting the Digital Pad to your Computer</i>	38
SPECIFICATIONS.....	39
<i>Digital Pad Specifications of DigiMemo L2 Model</i>	39
<i>Digital Pad Specifications of DigiMemo A402 Model</i>	39

<i>General Digital Pad Specifications</i>	39
<i>Digital Pen Specifications</i>	40
<i>File Formats</i>	40
<i>System Requirements</i>	40
<i>Environment</i>	40

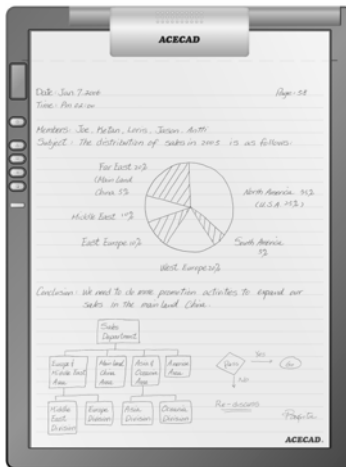
Getting Started

The DigiMemo is a stand-alone device with storage capability that digitally captures and stores everything you write or draw with ink on ordinary paper, without the use of computer and special paper. Then you can easily view, edit, organize and share your handwritten notes in Windows.

When connected to a PC, the DigiMemo offers an on-line writing function which can instantly synchronize your writing on the paper with the digital page in its software in Windows. It also is a USB tablet device in Windows.

Equipment Checklist

The following items are included in your DigiMemo package:

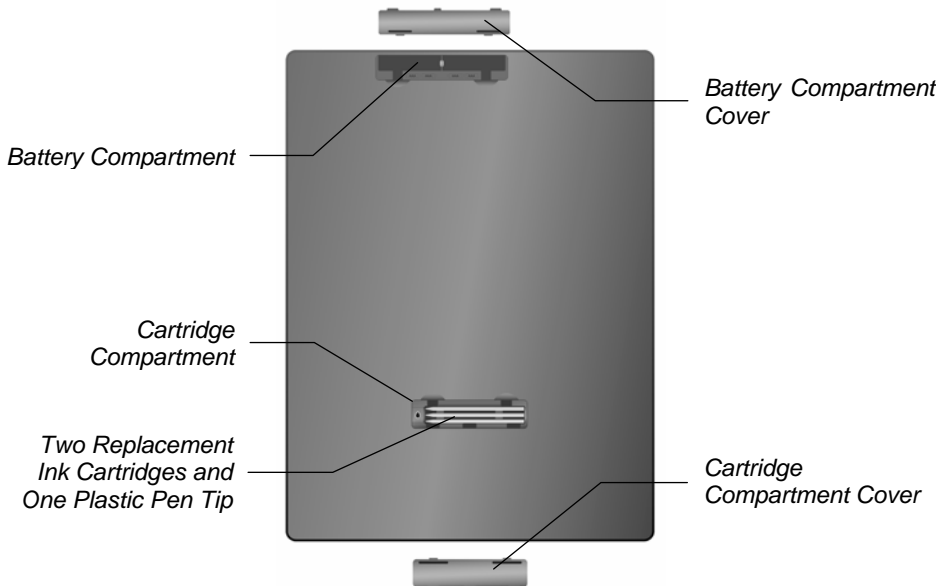
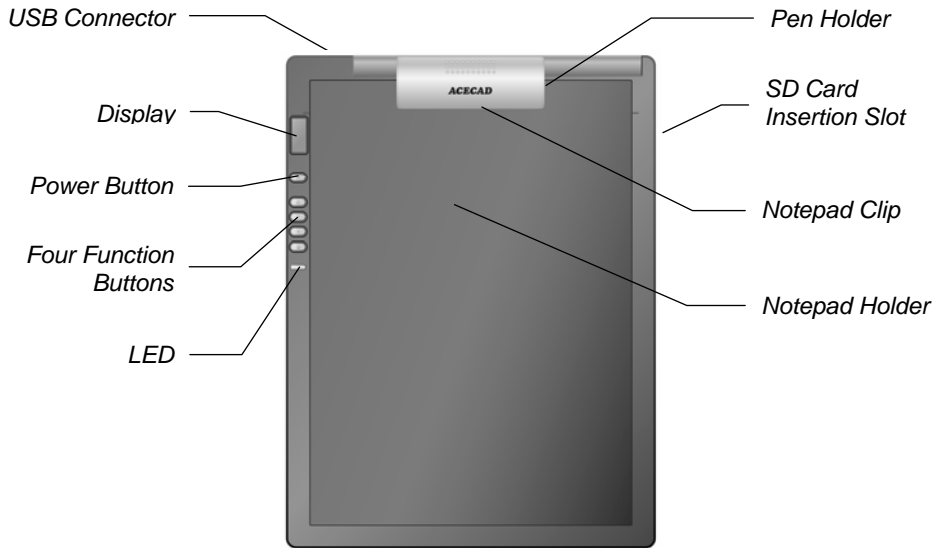


- Digital Inking Pen (DigiPen P100)

- Portable Digital Pad

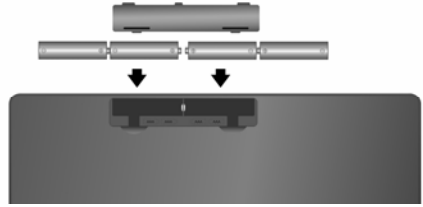
- Notepad (already held on the digital pad)
- Two Replacement Ink Cartridges (already stored in the digital pad)
- One Plastic Pen Tip (already stored in the digital pad)
- USB Cable
- Four Batteries (1.5 volt, size AAA)
- One 1.55V Button Cell Battery
- User Guide
- DigiMemo Manager Software CD

The Parts of the Digital Pad



Installing the Batteries into the Digital Pad

Open the battery compartment cover of the digital pad. Insert four batteries (1.5 volt, size AAA) into the battery compartment in accordance with the indication in the battery compartment. Close the battery compartment cover.



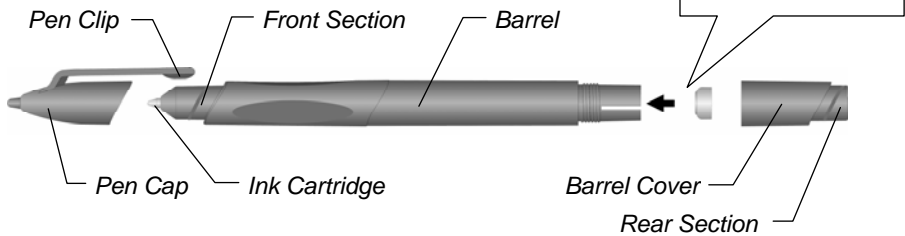
Note! Incorrect battery installation may damage the digital pad.

Note! Do not mix new and used batteries.

Note! With continuous use of the digital pad, four AAA alkaline batteries will last approximately 80 hours.

Installing the Battery into the Digital Inking Pen

Unscrew the barrel cover counterclockwise from the barrel of the pen. Take out the button cell battery (SR626SW, 377 or IEC-SR66) that is included in the package of the DigiMemo. Insert the battery into the battery compartment with the negative (-) cap facing the battery compartment. Screw the barrel cover clockwise onto the barrel until tight.

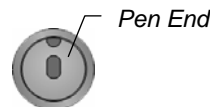


Note! Incorrect battery installation will result in the malfunction of the digital inking pen.

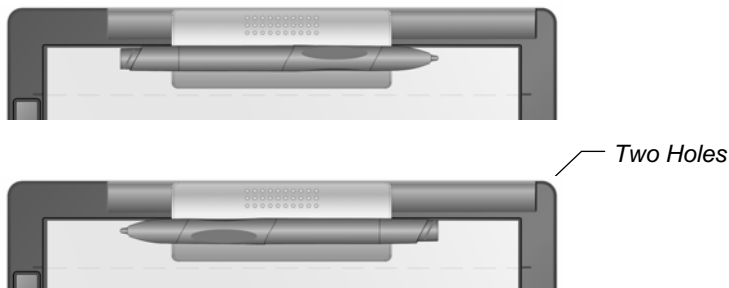
Note! The battery of the digital inking pen will last approximately 14 months.

Note! The front or rear section of the pen can hold the pen cap.

Note! You can attach some cord or accessory to the pen through the two holes on the pen end.



Note! You can clip the pen to the pad by using the pen clip to clip to the right or left pen holder on the notepad clip.



Note! You can attach some cord or accessory such as the pen to the pad through the two holes on the upper-right corner of the pad.

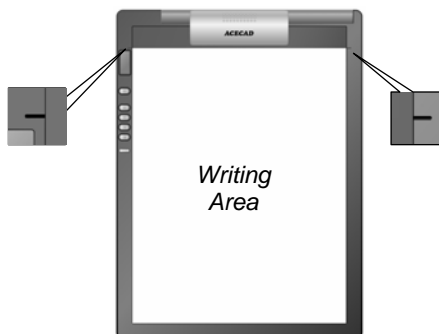
Putting a Notepad or Paper on the Digital Pad

You can use the notepad clip to hold a notepad in the notepad holder on the pad. You also can directly put a few sheets of paper on the writing area of the pad for your writing.

The Writing Area and Thickness

The writing area is the area on the digital pad where the digital pad can digitally capture and store everything you write with the digital inking pen as digital ink. The writing area is shown as the white area in the illustration. The carving lines on the pad are the margin indicators which indicate the upper boundary of the writing area.

Note! Your handwriting on paper outside the writing area can not be digitally captured and stored by the digital pad.

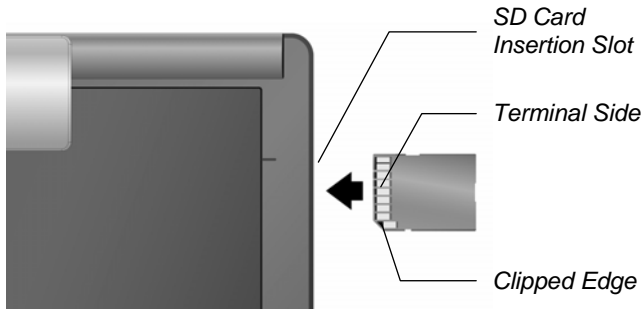


The writing thickness is the maximum thickness above the writing area where the digital pad can digitally capture and store everything you write with the digital inking pen as digital ink. The writing thickness is 14 mm (0.55") about 140 sheets of paper.

Storage Device in the Digital Pad

The digital pad is equipped with a built-in 32 MB storage device to store your handwritten notes. You also can load an optional Secure Digital (SD) memory card into the pad to expand the storage capacity of the pad.

To load an optional Secure Digital (SD) memory card, insert the memory card all the way into insertion slot until it clicks by holding the memory card with the terminal side facing upward.




- Note! The optional memory card must be Secure Digital (SD) memory card with the file system FAT.
- Note! To remove the Secure Digital (SD) memory card, push the memory card to pop it out.
- Note! Some brands of memory cards may not be compatible with this digital pad. Before purchasing a memory card, consult its manufacturer or dealer. Along with the digital pad, we recommend you to use Secure Digital (SD) memory cards (32 MB to 2 GB) of the brand **SanDisk**.

Writing and Recording Your Handwritten Notes

Using the digital inking pen on the digital pad produces both familiar ink notes on ordinary paper and digital pages in the storage device of the pad.

Note! The DigiMemo is a stand-alone device. You do not need to connect the digital pad to your computer for this function.


Turning on the Digital Pad


Press and hold the **Power** button on the digital pad until the  icon appears on the display. Release the **Power** button to turn on the pad. The display will be on and show the Digital Page Number, Page icon, Storage Device icon, Time display and Battery icon.



Note! The digital pad can not be turned on when connected to a PC.

- **Storage Device Icon**

Without loading an optional SD memory card, the **Storage Device** icon  is displayed and the built-in 32 MB storage device is the current storage device. Your handwritten notes will be stored in the built-in 32 MB storage device.

With loading an optional SD memory card, the **Storage Device** icon  is displayed and the optional SD memory card is the current storage device. Your handwritten notes will be stored in the optional SD memory card.

- **Digital Page Number**

The **Digital Page Number** indicates the current digital page in the current storage device. Your handwriting will be captured and stored in the current digital page in the current storage device (the built-in 32 MB storage device or the optional SD memory card).



The digital pad can manage up to 999 digital pages for each storage device (the built-in 32 MB storage device or the optional SD memory card).

- **Page Icon**

The **Blank Page** icon indicates that the current digital page contains no digital ink.



The **Page with Contents** icon indicates that the current digital page contains digital ink.



- **Battery Icon**

The **Battery** icon indicates the battery strength in the digital pad.



Changing the Current Digital Page

You can use the following function buttons on the pad to change the current digital page in the current storage device.

- **Page Backward Button** \triangle

Press the **Page Backward** button \triangle to move to the previous digital page. By pressing and holding the **Page Backward** button \triangle , the **Digital Page Number** moves fast and backward. Once release the button \triangle , it stops moving.

- **Page Forward Button** ∇

Press the **Page Forward** button ∇ to move to the next digital page. By pressing and holding the **Page Forward** button ∇ , the **Digital Page Number** moves fast and forward. Once release the button ∇ , it stops moving.

- **Next Blank Page Button** \square

Press the **Next Blank Page** button \square to move to the next blank digital page.

The Pen Icon

When you are writing or drawing on paper by using the digital pen on the digital pad, the **Pen** icon appears on the display. The **Pen** icon indicates that the digital pad is capturing and storing your handwriting as digital ink.



Note! If you do not see the **Pen** icon while writing, try to alter the pressure you apply on the pen tip.

Writing Your Notes on a New Page

By using the \square , ∇ or \triangle function button, select any blank digital page in which you want to store a new page of your handwritten notes on paper. We recommend you to put down the same page number on this new page of paper as the **Digital Page Number**. It helps you to synchronize your paper notes and digital pages.

Under the current **Digital Page Number** displayed, everything you write will be

immediately captured and stored in the current digital page file of the current storage device. The file name of this digital page is PGLT_XXX.DHW for the model DigiMemo L2, or PGA4_XXX.DHW for the model DigiMemo A402 (the XXX is the **Digital Page Number** such as 001).

While the **Storage Device** icon **M** is displayed, the digital page file is stored in the **DMEMO-M** folder in the built-in 32 MB storage device.

While the **Storage Device** icon **SD** is displayed, the digital page file is stored in the **DMEMO-S** folder in the optional SD memory card.

Note! To avoid creating a superimposed digital page, make sure that you select a blank digital page each time you change a page on paper.

Note! As you will see later, it is quite important to keep your written page number and the **Digital Page Number** aligned. For example, you can know the contents in the digital page from the page number that you wrote on paper.

Note! If you frequently alternate the built-in 32 MB storage device and an optional SD memory card, we recommend you to write the page number like "**Page M24**", "**P M24**", "**Page SD24**", "**P SD24**" ... etc. It is more convenient for you to know which storage device the digital page is stored in.

Note! The more you write on a digital page, the bigger size of the digital page file will be.

Writing Your Notes on a Page Already with Contents

Anytime you can switch to the paper page already with the contents and continue to write your notes. Moreover, use the ∇ or Δ function button to move the **Digital Page Number** to the one same as you wrote on the paper page. Now, start to write! Through this way, your new handwriting will be captured and stored in the right digital page.

Erasing a Digital Page on the Digital Pad

Erasing a digital page is similar to tearing off a paper page. By using the ∇ or Δ function button to move the **Digital Page Number** to the one which you want to erase. Then press the **Erase** button \times on the pad. The display will show **ERASE??** message. Press the **Erase** button \times again to erase all contents stored in the digital page.

Here is a brief recommendation: you may want to tear off the paper page or simply cross out the page number you wrote on the paper page.

Note! When **ERASE??** message appears, the erase procedure will be cancelled if you write or press any button Δ , ∇ or \square to execute other functions. All contents remain intact in the digital page.

Note! Once a digital page is erased, its original contents can not be recovered.

Turning off the Digital Pad

Press the **Power** button to turn off the digital pad. The display will be blank.

If you have not written or pressed any function button within the previous 30 minutes, the digital pad sounds a beep and automatically shuts down. The display will be blank.

Note! Since the pad has the automatic shutdown capability, please make sure that the display is on if you want to write again after a long period of time.

As you turn on the digital pad, the display will show the last **Digital Page Number** at the time it was turned off.

Setting the Date and Time

The dates created and modified for the digital page file are recorded according to the clock in the digital pad.

1. Turn off the digital pad.
2. Press and hold the \square button on the digital pad. Then press the **Power** button until the year digits flash on the display.
3. Repeatedly press or hold down the Δ or ∇ button to set the year.
4. Press the \square button. Then the month digits flash.
5. Repeat Step 3 and 4 to set the month, day, hour, minute, second and year cyclically.

Note! Only 24-hour format is available.

6. Press the \times button during the setting. The date and time adjustment will be stored. Then the digital pad will be turned on and the current time appears on the display.

Note! If you turn off the digital pad during the setting, the date and time adjustment will be not stored. The clock automatically returns to the previous setting.

Low Battery Indication on the Digital Pad

When the batteries remain too low power and are in need of replacement, the **Low Battery** icon will appear on the display. Please replace the batteries in the pad.



When the batteries are exhausted, the pad sounds 3 beeps. Then the pad is turned off immediately.

Notes on Replacement of Batteries in the Pad

When you replace the batteries in the pad, if the batteries are not in the battery compartment over about one minute, the adjusted date and time will be erased. Please reset the date and time.

Notes on use of the SD Memory Card

- Before you remove the SD memory card from the pad, please turn off the pad first. Or some data in the last digital page file may be lost.
- When a SD memory card with the write-protect switch set to LOCK is inserted into insertion slot, the pad sounds 2 beeps and the **Storage Device** icon **SD** flashes on the display. If you use the digital inking pen to write on the pad, the pad will beep. You can not use the digital pad under this situation. Please remove the SD memory card with the write-protect switch set to LOCK.

Full Memory Indication

The **90%** icon will appear to indicate that 90% capacity of the current storage device (**M** or **SD**) is used.



The **Full** icon will be shown if the memory is full in the current storage device (**M** or **SD**). If that is the case, the digital pad can not store your new handwriting. Also, if you still keep writing, the pad sounds 2 beeps.



Note! Under such circumstances, you need to erase unwanted digital pages if you want to continue to write.

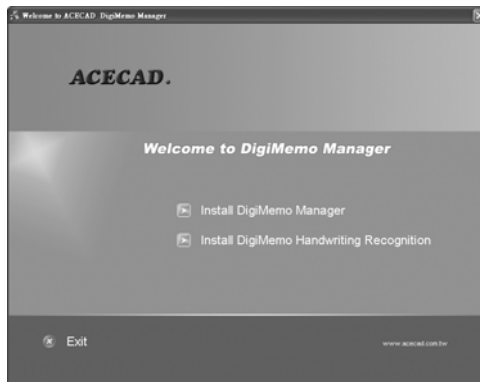
Note! In the following chapter, you will find that it is very easy to import, copy, move and delete the digital pages when connecting the pad to your PC through USB cable.

Organizing Your Notes in Windows

With its DigiMemo Manager software, you can easily view, edit, organize and share your digital pages in Windows. You can save any digital pages you arbitrarily select as a book file (e-Book).

Installing the DigiMemo Manager software

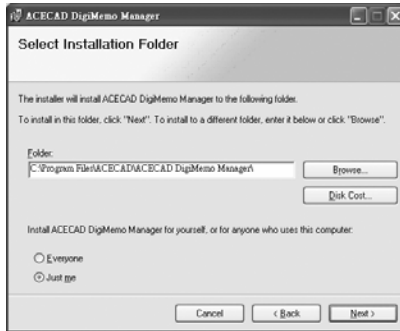
1. Turn on your computer and start Windows.
2. Insert the DigiMemo Manager software CD into the CD-ROM drive. The software installer will automatically launch. If the CD auto-run feature is not enabled, double-click the **Setup** icon on the DigiMemo Manager software CD. Select the **Install DigiMemo Manager** option in the dialog box.



3. Click **Next** in the dialog box.



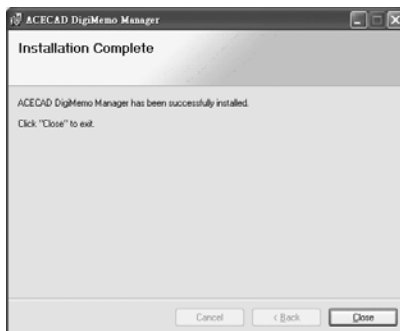
4. Click **Next** in the dialog box.



5. In the dialog box, click **Next** to start the installation.

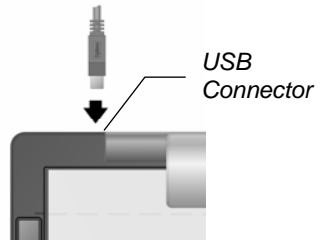


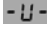
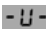
6. The DigiMemo Manager software has been successfully installed. Click **Close** in the dialog box. Please restart your Windows.



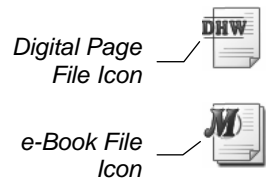
Connecting the Digital Pad to Your Computer

Turn on your computer. Take out the USB cable included in the package. Plug the wide connector of the cable into an available USB port on your computer. Connect the other end of the cable to the USB connector of the digital pad.



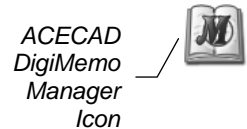
The **Connection** icon  will appear on the display of the pad. The LED on the pad will light. The **Connection** icon  indicates the connection between the digital pad and your computer. When connecting the pad to the computer, please notice the following:

- Your Windows will automatically detect the built-in 32 MB storage device and the optional SD memory card in the pad as removable storage devices.
- The pad is powered by the computer.
- The digital pad can not be turned on. At this moment, your handwriting can not be stored into the digital page file in the storage device of the pad.
- The pad is a USB tablet device in Windows. Please refer to the chapter — **Tablet Device in Windows**.
- You can store any computer files such as Word files to the built-in 32 MB storage device and the optional SD memory card.
- By using the DigiMemo Manager software, you can easily import and organize your digital pages as a book file (e-Book). Moreover, if you double-click a digital page file, the DigiMemo Manager software will be opened and it will import the digital page to a new book file (e-Book).



Creating Your e-Book File

On the Windows desktop, double-click the **ACECAD DigiMemo Manager** icon to open the software.



Toolbars

The following toolbars are on the software window:

- Standard Toolbar



- Tools Toolbar



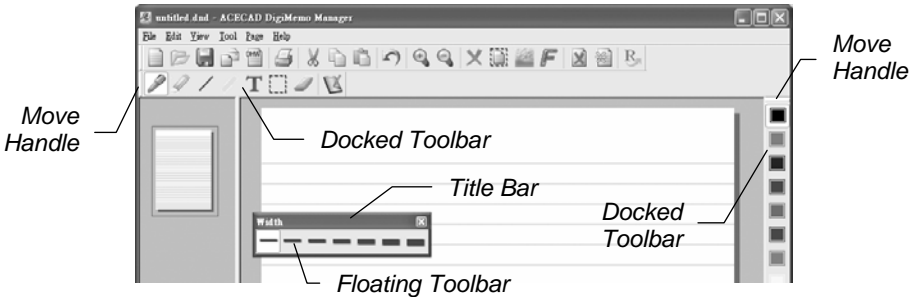
- Color Toolbar



- Width Toolbar

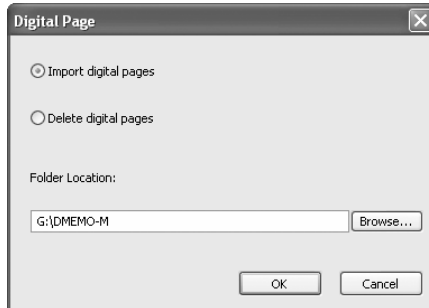


To move a toolbar to the new location, drag the move handle on a docked toolbar or the title bar on a floating toolbar.



Importing Your Digital Pages

1. Click the **Digital Page** button  on the **Standard** toolbar. The **Digital Page** dialog box will appear. 

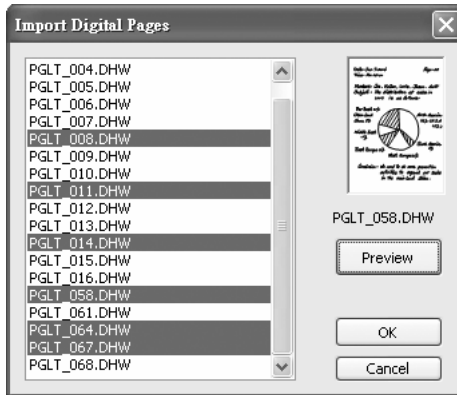


2. Select the **Import digital pages** option button. Click **Browse** to select a folder from which you want to import your digital pages. Such folder could possibly be the DMEMO-M, the DMEMO-S, the DMEMO-C or any folder

that contains digital pages.

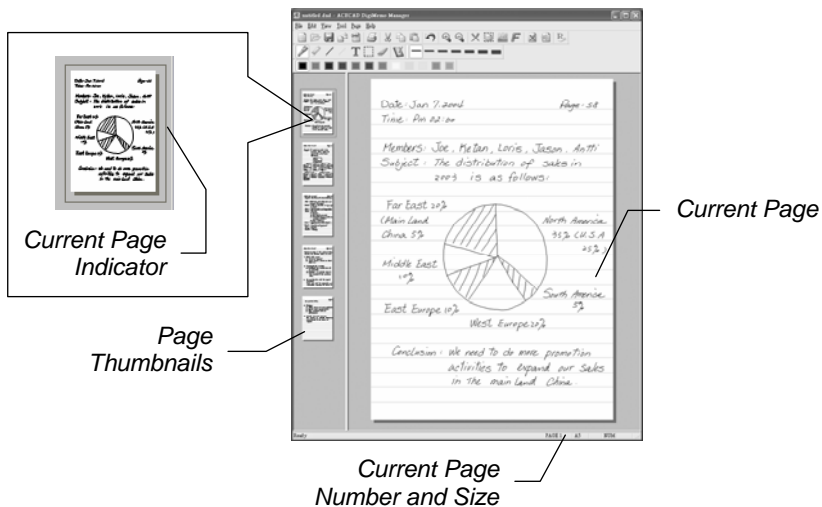
3. Click **OK**. The **Import Digital Pages** dialog box will appear.
4. To select nonadjacent digital pages, click one digital page, and then hold down the **CTRL** key and click each additional digital page.

To select adjacent digital pages, click the first digital page in the sequence, and then hold down the **SHIFT** key and click the last digital page.



To preview a digital page, select the digital page and click **Preview**.

5. Click **OK**. The digital pages you select will be imported to this book file.



Note! You can click any page thumbnail to quickly switch the current

page.

Note! You can import and insert any digital pages after the current page.

Note! The current page number indicates the current page of this book file (e-Book).


Note! As importing, the original digital page remains intact.

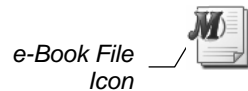
Saving an e-Book File

Click the **Save** button  on the **Standard** toolbar.



Note! If you are saving the e-Book file for the first time, you will be asked to give it a name.

Note! The icon of a book file (e-Book) is . The extension of a book file (e-Book) is DND.



Saving a Copy of an e-Book File

On the **File** menu, click **Save As**. In the dialog box, enter a new name for the e-Book file. Click **Save**.


Opening an e-Book File

You can use the following methods to open your e-Book file.

- In the folder of the e-book file, double-click the e-Book file to open the file in a **new** software window.



Note! By this way, you can open various e-Book files in different software windows.

- In the software window, click the **Open** button  on the **Standard** toolbar. In the dialog box, select the folder and then the e-Book file. Click **Open**.



Note! If the previous e-Book file is not saved in its software window, you will be asked to save that e-Book file.

Creating a New e-Book File

You can use the following methods to create a new e-Book file.

- On the Windows desktop, double-click the **ACECAD DigiMemo Manager** icon to create a new and blank e-Book file with a new page in a **new** software window.




Note! By this way, you can open various e-Book files in different software windows.

- In the folder of a digital page file, double-click the digital page file. The digital page will be imported to a new e-Book file in a **new** software window.



Note! By this way, you can open various e-Book files in different software windows.

- In the software window, click the **New** button  on the **Standard** toolbar. A new and blank e-Book file with a new page will be created in the software window.



Note! If the previous e-Book file is not saved in its software window, you will be asked to save that e-Book file.



Printing an e-Book file

Click the **Print** button  on the **Standard** toolbar. Click **Ok** to print the e-Book file.



Editing Your e-Book File

Zooming in and Zooming out

You can click the **Zoom in** button  to get a close-up view of the current page or the **Zoom out** button  to see more of the page at a reduced size.



Inserting a Text Box


1. Click the **Text Box** button **T** on the **Tools** toolbar.
2. Click and drag in the current page where you want to insert the text box.
3. Type and edit your text in the text box.



Note! You can click a color button to change the color of the text or click the **Font** button **F** to change the font of text.



Editing an Existing Text Box


1. Click the **Select** button  on the **Tools** toolbar.
2. Click anywhere inside the existing text box. Then edit your text.



Note! You can click a color button to change the color of the text or click the **Font** button **F** to change the font of text.




Drawing a Freeform Line and Writing

1. Click the **Pen** button  on the **Tools** toolbar.
2. You can switch the color by clicking a color button on the **Color** toolbar. You can change the width by clicking a width button on the **Width** toolbar.
3. Drag to draw a freeform line or write.




Drawing a Straight Line

1. Click the **Line** button  on the **Tools** toolbar.
2. You can switch the color by clicking a color button on the **Color** toolbar. You can change the width by clicking a width button on the **Width** toolbar.
3. Click and drag to draw a straight line.




Drawing a Highlighting and Freeform Line

1. Click the **Highlighter** button  on the **Tools** toolbar.
2. You can switch the color by clicking a color button on the **Color** toolbar. You can change the width by clicking a width button on the **Width** toolbar.
3. Click and drag to draw a highlighting and freeform line.




Drawing a Highlighting and Straight Line

1. Click the **Highlighting Line** button  on the **Tools** toolbar.
2. You can switch the color by clicking a color button on the **Color** toolbar. You can change the width by clicking a width button on the **Width** toolbar.
3. Click and drag to draw a highlighting and straight line.



Erasing Objects

1. Click the **Eraser** button  on the **Tools** toolbar.
2. To erase, drag the pointer over the digital ink strokes or lines.









Undoing the Last Action


Click the **Undo** button  on the **Standard** toolbar to undo the very last action you took.

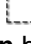


Selecting Objects

You can use the following methods to select objects:

- To select only one object, click the **Select** button  and then one digital ink stroke or line. A **Selection** box will appear around the selected object. 
- To select one or several digital ink strokes, lines or text boxes, click the **Select** button . Then click and drag a box around the whole of them. A **Selection** box will appear around the selected objects. 
- Click the **Select All** button  to select all objects in the current page. A **Selection** box will appear around the selected objects. 

Note! By clicking the **Select** button  and then one text box, you can **edit** the text in the text box. However you can not **select** the text box by this way.

Note! To select one text box, click the **Select** button . Then you must click and drag a box around the text box. A **Selection** box will appear around the selected text box. However you can not **edit** the text in the text box by this way.



Resizing Objects

1. Select one or several digital ink strokes, lines or text boxes.
2. Rest the pointer on any corner of the Selection box until the pointer becomes a double-headed arrow.
3. Drag the corner of the Selection box to change the size of the selected objects.









Moving Objects

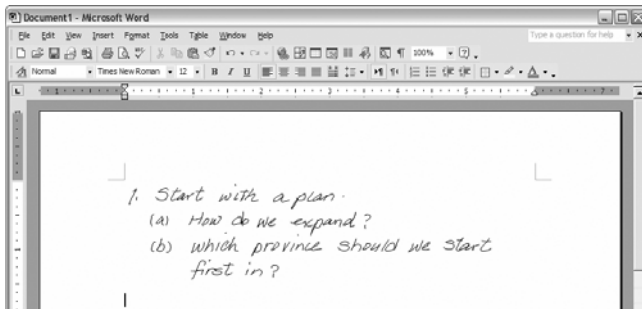
1. Select one or several digital ink strokes, lines or text boxes.
2. Move the pointer into the Selection box. The pointer will then become a move pointer.
3. Drag the selected objects in the Selection box to a new location.

Deleting Objects

1. Select one or several digital ink strokes, lines or text boxes.
2. Click the **Delete** button  or press the **DELETE** key to delete the selected objects. 

Copying or Moving Objects


1. Select one or several digital ink strokes, lines or text boxes.
2. Do one of the following:
 - To move the selected objects, click the **Cut** button  on the Standard toolbar. 
 - To copy the selected objects, click the **Copy** button  on the Standard toolbar. 
3. Do one of the following:
 - If you want to copy or move the selected objects to another page in this or another e-Book file, switch to the page. Click the **Paste** button  on the Standard toolbar. The Selection box will be around the pasted objects. You can move the pasted objects to a new location. 
 - If you want to copy or move the selected objects to the same page, click the **Paste** button  on the Standard toolbar. The Selection box will be around the pasted objects. You can move the pasted objects to a new location. 
 - If you want to copy or move the selected objects to another file for other programs such as Outlook e-mail message, Word file or Excel file, switch to the file. Click the Paste command in the program.



Changing the Color and Width of Objects


1. Select one or several digital ink strokes or lines.
2. Click a **color** button on the **Color** toolbar to switch the color of the selected objects. Click a **width** button on the **Width** toolbar to change the width of the selected objects.

Note! By selecting a text box, you can not change the color of text in the

text box. By editing a text box, you can click a **color** button to change the color of the selected text or click the **Font** button  to change the font of the selected text.



Adding a New Page

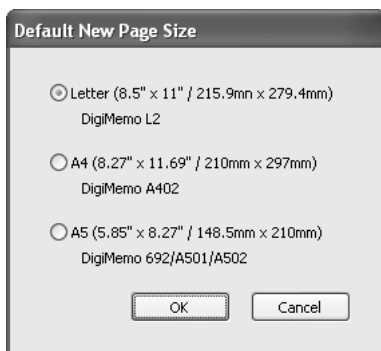
Click the **Add Page** button  on the **Standard** toolbar. A new page will appear at the end of this book file.



Setting the Default New Page Size

The **Default New Page Size** is for the new page which you add in the e-Book file. It does not matter with the page size of the digital page which you import to the e-Book file.

To set it, click **Page Setup** on the **File** menu. The **Default New Page Size** dialog box will appear. We recommend that you select the option button in accordance with your DigiMemo model.



Moving the Current Page

1. On the **Page** menu, click **Move to**. The **Move to** dialog box will appear.
2. In the dialog box, type the page number (such as 5) which you want to move the current page to.
3. Click **OK**. The current page will then be moved to the page you designated previously.

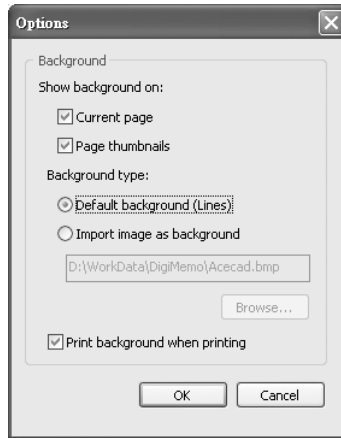
Removing the Current Page

Click the **Remove Page** button . A dialog box will appear. Click **Yes**. The current page and all its contents will be removed.



Showing the Background of Pages

1. On the **Edit** menu, click **Option**. A dialog box will appear.



2. Choose or clear the following check boxes to show the background on:

- Current page
- Page thumbnails

3. If necessary, select the following one option button:

- Default background (Lines)
- Import image as background

Click the **Browse** button to find the image file such as BMP, JPG, GIF or PNG file which you want to be the background.

4. Choose or clear the **Print background when printing** check box.
5. Click **OK**.

Switching the Current Page by Keyboard Shortcuts

First Page **CTRL+HOME**


Last Page **CTRL+END**

Previous Page **PAGE UP**

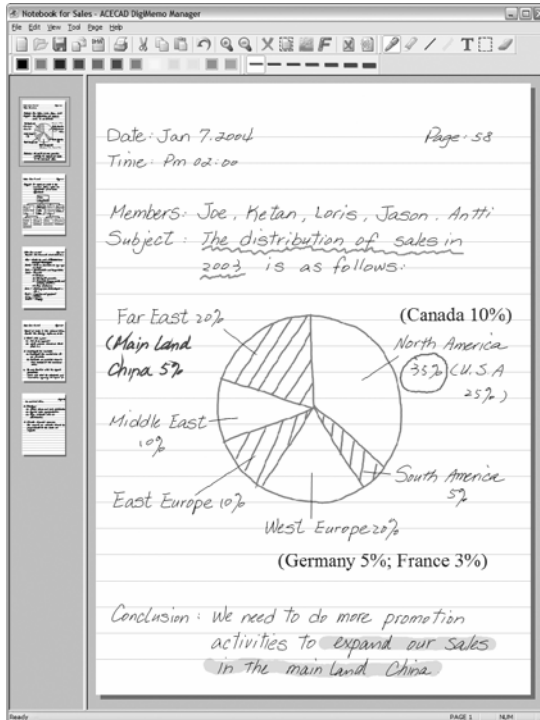
Next Page **PAGE DOWN**

Saving the Current Page as an Image File

You can save the current page as an image file whose file types can be BMP, JPG, GIF or PNG.

1. Click the **Save as Image** button  on the **Standard** toolbar.
2. In the dialog box, select a file type and enter a file name. Click **Save**.

Sample of an Edited e-Book File

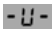




On-line Writing Your Notes

When the digital pad is connected to your computer through a USB port, you can use the **On-line Writing** function in the DigiMemo Manager software. By using the digital pen on the pad, the **On-line Writing** function can instantly synchronize your writing on the paper with the current page in the software window. For example, your writing on the paper in the lower-left corner of the pad instantly appears in the lower-left corner of the current page in the software window.

Note! Before you write or draw by using the **On-line Writing** function, we recommend that you already switch to the right paper page on the pad and switch the right current page in the software window.

To use the **On-line Writing** function, execute the following steps:

1. Make sure that the digital pad is connected to your computer through a USB port. The **Connection** icon  appears on the display of the pad.
2. On the **Tools** toolbar in the software window, click the **On-line Writing** button  to activate the function. 

Note! When you activate the **On-line Writing** function, the tablet device function in Windows of the pad will be closed. You can not use the digital pen on the pad to move the mouse pointer on the screen. When you move the digital pen on the pad, the **On-line Writing** cursor moves only inside the current page in the software window.

Note! The zoom setting for the current page will be automatically changed to 100%. You can not change the zoom setting.

Note! By using your mouse, you still can use the other functions such as Eraser in the software window.

3. You can switch the color by clicking a color button on the **Color** toolbar by using your mouse. You can change the width by clicking a width button on the **Width** toolbar by using your mouse.
4. By using the digital pen on the pad, your writing or drawing on the paper instantly appears on the corresponding position of the current page in the software window. For example, your writing on the paper in the lower-left corner of the pad instantly appears in the lower-left corner of the current page in the software window.



Note! When you write or draw, the software automatically adjust the current page position in the active software window so that your writing or drawing can be instantly visible in the active software window.

Note! You can switch both the paper page on the pad and the current page in the software window.

Note! Even though the software window is not active, the activated **On-line Writing** function still is available.

Note! If you close or minimize the software window in which the **On-line Writing** function is activated, the **On-line Writing** function will be closed.

Note! Your writing or drawing will not be stored in any digital page file in the storage device of the pad.

5. To close the **On-line Writing** function, click the **On-line Writing** button  on the **Tools** toolbar in the software window. 

Note! When the **On-line Writing** function is closed, the tablet device function in Windows of the pad will be activated. You can use the digital pen on the horizontal pad to move the mouse pointer on the screen. Please refer to the chapter — **Tablet Device in Windows**.

Causes of the On-line Writing Function Disabled or Closed

To use the **On-line Writing** function, please verify the followings, or the **On-line Writing** function will be disabled or closed:


- The page size of the current page in the software window must be in accordance with your DigiMemo model.
- The page size in accordance with the DigiMemo Model is shown below.

<i>DigiMemo Model</i>	<i>Page Size</i>
DigiMemo L2	Letter
DigiMemo A402	A4

Note! The page size of the current page is shown in the lower-right corner of the software window.

Note! The page size of a digital page which you import is in accordance with the DigiMemo model which created it.

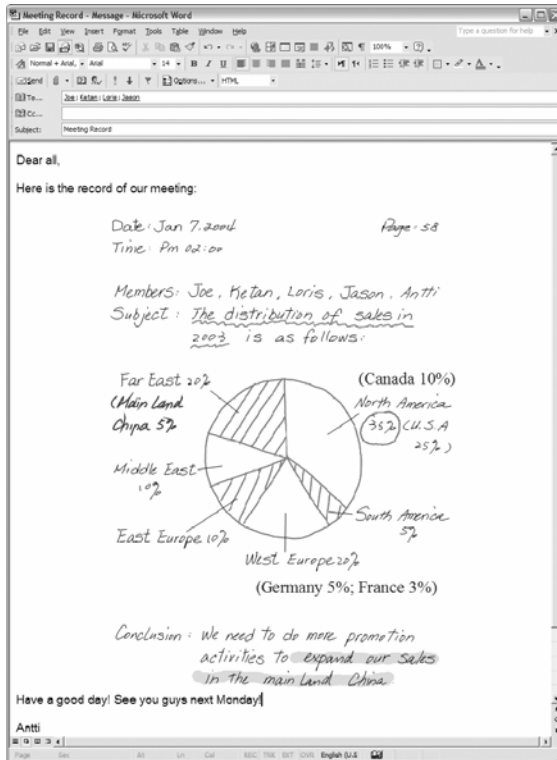
Note! The page size of a new page which you add in the e-Book file is according to the **Default New Page Size** setting. If it is necessary to change the setting, please refer to the section — **Setting the Default New Page Size**.

- If the **On-line Writing** function already be activated in one software window, it will be disabled in other software windows.
- Make sure that the digital pad is connected to your computer through a USB port. The **Connection** icon  appears on the display of the pad.
- The DigiMemo L2 or A402 supports and can use the **On-line Writing** function. Some DigiMemo models such as 692, A501 or A502 do not support and can not use the **On-line Writing** function.

Sending Your e-Book File in E-mail

You can use one of the following methods to send your e-Book file in e-mail:

- In the software window of DigiMemo Manager, you can **copy** or **move** several pages or just part of a page in your e-Book file to your Outlook e-mail message.





Note! You can not use this **copy** or **move** technique in an Outlook Express e-mail message.

- In an e-mail message, insert your e-Book file as an attachment.


Note! To view and edit your e-Book file, the recipient must have the DigiMemo Manager software. If he or she does not have this software, please download it on the ACECAD website.

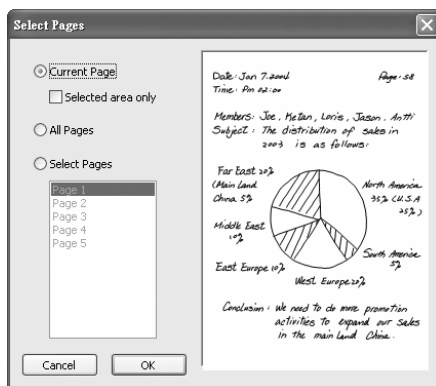
<http://www.acecad.com.tw/digimemo/download.html>

- Open your e-Book file in the DigiMemo Manager software. Click the **E-mail** button  on the **Standard** toolbar. In the dialog box, select the **Attach your e-Book file** option. Click **OK**. Your e-Book file will be attached to a **new** e-mail message. 
- Open your e-Book file in the DigiMemo Manager software. Click the **E-mail** button  on the **Standard** toolbar. In the dialog box, select the **Attach images** option. Click **OK**. Every page of your e-Book file will be saved as a JPG image file and be attached to a **new** e-mail message. 

Converting Your Handwritten Notes in Your e-Book File



1. If you have installed the optional DigiMemo Handwriting Recognition software, click the **Conversion** button  on the **Standard** toolbar in the software window of DigiMemo Manager.
2. In the dialog box, select the following one option button:



- Current Page

In this option, you can choose the **Selected area only** check box.

- All Pages
- Select Pages

You can select several pages by using **CTRL** or **SHIFT** key with mouse click.

3. Click **OK**. The selected pages or area will be imported into the DigiMemo Handwriting Recognition software.

Using Another Optional Card Reader

If you have another optional card reader for SD memory card, you can organize your digital page or other computer files in the optional SD memory card through this card reader.

Easily Managing Digital Page Files

When connecting the digital pad to your computer, the removable storage device, such as the built-in 32 MB storage device or the optional memory card

of the pad, is accessed to your computer. The following procedures can be easily executed in your Windows.

- Delete the digital page files in the built-in 32 MB storage device or the optional memory card of the digital pad.

Here is a brief recommendation: you may want to tear off the paper page or simply cross out the page number you wrote on the paper page.



Note! Once a digital page file is deleted in a removable storage device (the built-in 32 MB storage device or the optional memory card), it can not be recovered.

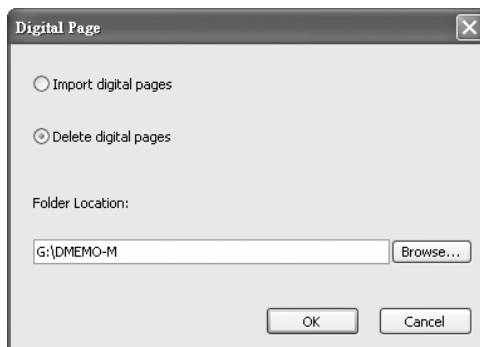
Note! You can not delete files in memory card when the write-protect switch of the memory card is set to LOCK.

- You can copy or move the digital page files in the built-in 32 MB storage device or the optional memory card to your hard disk drive. You also can rename the digital page files in your hard disk drive.

Note! Do not rename the digital page files in the folder DMEMO-M of the built-in 32 MB storage device or the folder DMEMO-S of the optional memory card. Otherwise the digital pad can not manage the renamed digital pages.

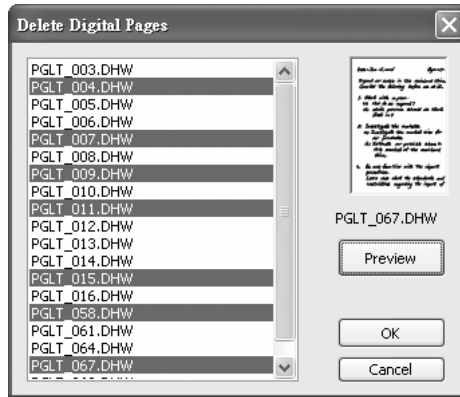
Deleting the Digital Pages in the DigiMemo Manager

1. In the software window of DigiMemo Manager, click the **Digital Page** button  on the **Standard** toolbar. The **Digital Page** dialog box will appear. 
2. Select the **Delete digital pages** option button. Click **Browse** to select a folder in which you want to delete your digital pages. Such folder could possibly be the DMEMO-M, the DMEMO-S, the DMEMO-C or any folder that contains digital pages.
3. Click **OK**. The **Delete Digital Pages** dialog box will appear.



4. To select nonadjacent digital pages, click one digital page, and then hold down the **CTRL** key and click each additional digital page.

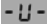
To select adjacent digital pages, click the first digital page in the sequence, and then hold down the **SHIFT** key and click the last digital page.



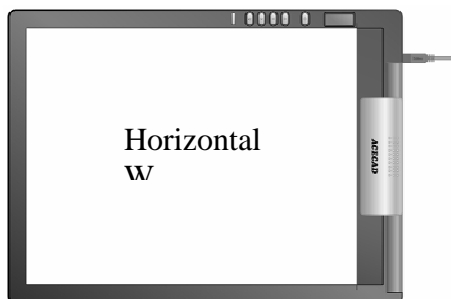
To preview a digital page, select the digital page and click **Preview**.

5. Click **OK**. The digital pages you select will be deleted.

Tablet Device in Windows

When the digital pad is connected to your computer through a USB port, the **Connection** icon  will appear on the display of the pad and the LED on the pad will light. The digital pad is a tablet device in Windows and for all Windows applications. You can use the digital pen on the horizontal writing area of the pad to move the mouse pointer on the screen. The pen tip of the digital pen is the primary button of the mouse.

The horizontal writing area of the pad corresponds directly to the whole screen. For example, if you move the pen to the lower-left corner of the horizontal writing area, the mouse pointer will move to the lower-left corner of the screen.



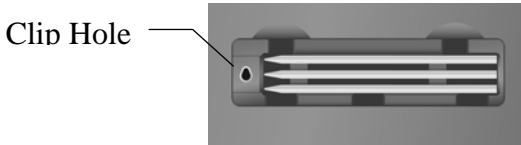
Note! If you put a notepad or paper on the pad for use with a drawing program such as Painter, we recommend that you use the ink cartridge in the digital pen. If you move the digital pen directly on the plastic surface of the writing area, we recommend that you use the plastic pen tip in the digital pen. Please refer to the section in the Appendixes — ***Replacing the Cartridge of the Digital Pen.***

Note! When you activate the **On-line Writing** function in the DigiMemo Manager software, the tablet device function in Windows of the pad will be closed. You can not use the digital pen on the pad to move the mouse pointer on the screen. When you move the digital pen on the pad, the **On-line Writing** cursor moves only inside the current page in the software window.

Appendixes

Replacing the Cartridge of the Digital Pen

Open the cartridge compartment cover on the back of the digital pad. Two replacement ink cartridges and one plastic pen tip are stored in the cartridge compartment of the digital pad.

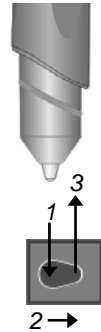


To replace the cartridge of the pen, you may use a small clip to gently pull the old one out. Then insert a new one and press the cartridge tip firmly against a hard surface until it snaps into place.



You can also use the clip hole in the cartridge compartment to replace the cartridge.

1. Hold the digital pen upright and insert the cartridge tip into the wider side of the clip hole.
2. Gently push the pen horizontally towards the narrow side of the clip hole to as far as it can reach.
3. Gently pull out the cartridge from the pen.
4. Insert a new one. Then press the cartridge tip firmly against a hard surface until it snaps into place.



Purchasing New Replacement Ink Cartridges

The specification of ink cartridge used for the digital pen is 2.3 mm/0.09" (Diameter) x 67 mm/2.64" (Length).

Note! The material of some ink cartridges may affect the performance of the digital pen. Some ink cartridge with the different outside dimensions may damage the digital pen.

Note! The following ink cartridges have been tested and approved for use with

the digital pen:

<i>Brand</i>	<i>Model</i>
ACECAD	Ink Cartridge Series
Cross	8518-1
Zebra	BR-8A-4C
Lamy	M21
Sterling (Target)	01800T
SPALDING	RFR80A
STAEDTLER	930-ASBK3V

Replacing the Battery in the Digital Pen

Even though the battery of the digital pen can last approximately 14 months, the battery in the pen may be exhausted if any of the following situations occurs. If so, please replace the battery.

- Severe missing digital ink strokes
- Serious lengthened or shortened digital ink strokes
- Significant twisted digital ink strokes
- Decreasing of the writing thickness

Removing the DigiMemo Manager Software in Windows

Open **Add or Remove Programs** icon in the Control Panel window. Remove the **ACECAD DigiMemo Manager** software.

Caring for the DigiMemo

To assure proper functioning of the digital pen and pad, please observe the following precautions:

- Remove the batteries from the digital pad if it is not expected to be used for long periods. This will eliminate the possibility of battery liquid leaking from the batteries and corroding the digital pad.
- Remove the button-cell battery from the digital inking pen if it is not expected to be used for long periods. This will eliminate the possibility of

battery liquid leaking from the batteries and corroding the digital pen.

- Avoid placing diskettes or other magnetic media on the pad surface.
- Avoid placing hot or heavy items on the pad.
- Clean the pen and pad with a soft cloth lightly dampened with water or a neutral detergent.
- Never drop the pen or pad. The pen or pad may malfunction if subjected to strong shocks or vibration.
- Avoid cutting or scratching the pad surface.
- Never immerse the pen and pad in liquid.
- Avoid operating or storing the pen and pad in extremely hot or cold temperatures, or where the relative humidity is high.
- Never take the pad or pen apart.
- Do not use or store the product in the vicinity of equipment that generates strong electromagnetic radiation or magnetic fields.

Error Codes on the Display of the Digital Pad

The Malfunction of the Built-in 32 MB Storage Device — the Error Code E04

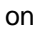


If any of the following situations occurs, you need to reset the built-in 32 MB storage device in the digital pad.

- The malfunction of the built-in 32 MB storage device occurs.
- The error code **E04** appears on the display of the pad. It indicates that the file system of the built-in 32 MB storage device is incompatible with the pad.

Note! Resetting the built-in 32 MB storage device permanently deletes all data and files it contains.

To reset the built-in 32 MB storage device, execute the following steps:

Note! If a SD memory card is loaded in the digital pad, we recommend that you remove the SD memory card from the pad.

1. While the digital pad is turned off, press and hold the **Erase** button  on the pad.
2. Meanwhile, press and hold the **Power** button on the pad until the  icon appears on the display.
3. Release the **Power** button while continuing holding down the **Erase** button .

4. Then release the **Erase** button \times .
5. When the reset is finished, the digital pad will be turned on.

Note! The display will show the current digital page 001 with no digital ink in the built-in 32 MB storage device if no SD memory card is loaded in the pad.

Note! Do not format the built-in 32 MB storage device through the format function in Windows. Or it will cause the incompatibility problem with the pad.

The File System Incompatibility of an Optional SD Memory Card — the Error Code E02

If the error code **E02** appears on the display of the digital pad, it indicates that the file system of the optional SD memory card is incompatible with the digital pad. If you want the digital pad to capture and store your handwriting in this optional SD memory card, please format this memory card before use.

Note! Formatting an optional memory card permanently deletes all data and files it contains. Before formatting, be sure to transfer to a computer any files you would like to keep.

To format an optional SD memory card, execute the following steps:

1. Load the memory card into the digital pad.
2. Turn on your computer and start Windows.
3. Connect the digital pad to your computer.
4. Format the memory card with the file system **FAT** in Windows.

Note! The digital pad only supports an optional SD memory card with the file system FAT. The digital pad does not support an optional SD memory card with other file system.

The Damage or Incompatibility of an Optional SD Memory Card — the Error Code E01

If the error code **E01** appears on the display of the digital pad, it indicates that the optional memory card may be damaged or the memory in the memory card is incompatible with the digital pad. You can not use it with the pad.

The Full Root Directory — the Error Code E06

If the error code **E06** appears on the display of the digital pad, it indicates that too many files or folders in the root directory in the built-in 32 MB storage device or the optional SD memory card. Move or delete some files or folders in

the root directory.

The Damage of the Digital Pad — the Error Code E03 or E05

If the error code **E03** or **E05** appears on the display of the digital pad, it indicates that the digital pad may be damaged. It needs to be repaired. Please contact the ACECAD distributor.

Troubleshooting

General Problems

Problem: A superimposed digital page is created.

Solution: Make sure to select a blank digital page each time you change a page on paper.

Problem: Minor lengthened or shortened digital ink strokes occur

Solution: Write a little bit slowly or harder.

Problem: Significant missing, twisted, lengthened or shortened digital ink strokes occur.

Solution: Please check the following situations for the digital pen:

- The battery is correctly installed in the pen.
- The battery must be inserted into the battery compartment with the negative (-) cap facing the battery compartment.
- The cushion (copper color) of the battery is still located inside the barrel cover. In fact, such cushion will remain at its original position unless it is improperly removed.
- The barrel cover is screwed tightly onto the barrel of the pen.
- Once the battery inside the digital pen has been used for a long time, it should be replaced with a new one.
- If you just replace an ink cartridge of the pen, please press the new cartridge tip firmly against a hard surface until it snaps into place.



Please verify that the thickness of paper is under the writing

thickness of the digital pad.

Solution: Do not try to trace or write through any conductive material (for example: steel ruler).

Problem: When you are writing or drawing on paper by using the digital pen on the digital pad, the Pen icon does not appear on the display.



Solution: Try to alter the pressure you apply on the pen tip.

Problem: After replacing the ink cartridge with the new one, the performance level of the digital pen is lowered.

Solution: Please purchase and use an ink cartridge which we recommend.

Problem: The digital pad can not be turned on.

Solution: Please verify that the digital pad is not connected to your computer.

Problem: After using for a period of time, you can not turn on the digital pad.

Solution: The batteries in the pad may be exhausted. Please replace the batteries.

Problem: After replacing the batteries of the digital pad, the date and time in the pad are incorrect.

Solution: When you replace the batteries in the pad, no battery in the battery compartment may be over one minute. The adjusted time and date are erased. Please reset the date and time.

Problem: After you load an optional SD memory card into the digital pad and then turn on the pad, the Storage Device icon **SD** is not shown on the display. The display still shows the Storage Device icon **M**.

Solution: Make sure that you insert the memory card correctly into the SD card insertion slot of the pad.


Problem: The Storage Device icon **SD** flashes on the display.

Solution: When a SD memory card with the write-protect switch set to LOCK is inserted into insertion slot, the pad sounds 2 beeps and the **Storage Device** icon **SD** flashes on the display. Please remove the SD memory card with the write-protect switch set to LOCK.

Problem: Even though the stored digital pages have not reached 999, the memory (either in the built-in 32 MB storage device or in an optional memory card) is full.

Solution: Although the digital pad has the ability to manage up to 999 digital pages (either for the built-in 32 MB storage device or for an optional memory card), such ability is unrelated to the maximum storage capacity.

The full memory means that the used space for the digital page files and the other computer files reaches the maximum capacity of the built-in 32 MB storage device or an optional memory card.

Problem: When pressing the **Next Blank Page** button , the current digital page does not move to the next blank digital page and the pad sounds 2 beeps.

Solution: In the DMEMO-M or DMEMO-S folder in the current storage device (the built-in 32 MB storage device or the optional memory card), there are already 999 digital page files containing digital ink. Move or delete some digital page files in the folder.

Problems in the DigiMemo Manager Software

Problem: When you switch to a new current page in the software window, the activated On-line Writing function is closed.

Solution: The page size of the new current page should be not in accordance with your DigiMemo model. Please refer to the section — Causes of the On-line Writing Function Disabled or Closed.

Problem: In the software window of DigiMemo Manager, the selected objects in an e-Book file can not be copied or moved to a file for some programs such as Notepad.

Solution: You can copy or move the selected objects to another file for other programs such as Outlook e-mail message, Word file or Excel file. However, this function is not suitable for all Windows programs.

Problem: Problems occur on the printing results.

Solution: We recommend you to use the Letter, A4 or A5 paper size.

Problems When Connecting the Digital Pad to your Computer

Problem: When connecting the digital pad to your computer through a USB port, your Windows can not recognize the built-in 32 MB storage device and an optional memory card in the pad as removable storage devices.

Solution: Please verify the followings:

- The USB port is available.
- Make sure that a power adapter provides enough power to the USB hub while connecting the digital pad via an USB hub.
- We recommend you connect the digital pad directly to an USB port on the computer.
- Occasionally, if your Windows can not recognize them, please restart your Windows.

Problem: Before disconnecting the digital pad from your computer, what should be noticed?

Solution: The following stated notice is applied for all removable storage devices. Close any associated windows for the built-in 32 MB storage device or an optional CF memory card before attempting to disconnect the digital pad from your computer.

Specifications

Digital Pad Specifications of DigiMemo L2 Model

Size	9.88" (width) x 13.22" (length) 251 mm (width) x 336 mm (length)
Thickness	0.47" (12 mm)
Weight	Approx. 1.4 lbs (635 g) without batteries Approx. 1.5 lbs (680 g) with batteries
Writing Area	8.5" x 11" (216 mm x 279 mm)
Writing Thickness	0.55" (14 mm); approx. 140 sheets of paper
Notepad Holder	Holder for Letter size notepad; 8.5" x 11.9" (216 mm x 302 mm)
Digital Page Size	Letter size (8.5" x 11" / 216 mm x 279 mm)

Digital Pad Specifications of DigiMemo A402 Model

Size	245 mm (width) x 336 mm (length) 9.63" (width) x 13.22" (length)
Thickness	12 mm (0.47")
Weight	Approx. 615 g (1.35 lbs) without batteries Approx. 660 g (1.45 lbs) with batteries
Writing Area	210 mm x 279 mm (8.27" x 11")
Writing Thickness	14 mm (0.55"); approx. 140 sheets of paper
Notepad Holder	Holder for A4 size notepad; 210 mm x 300 mm (8.27" x 11.81")
Digital Page Size	A4 size (210 mm x 297mm / 8.27" x 11.7")

General Digital Pad Specifications

Storage Medium	Built-in 32 MB storage device
Optional Storage Medium	Secure Digital (SD) memory card (FAT file system)
Power Source	Four (4) batteries (1.5volt, size AAA) Power Voltage: 3V Power Current: Approx. 25 mA Power Consumption: Approx. 75 mW
Battery Life	Approx. 80 hours

Power Source	Supplied from USB port when connecting the digital pad to PC.
Interface to PC	USB port

Digital Pen Specifications

Size	134 mm (length) x 11.3 mm (diameter) 5.28" (length) x 0.45" (diameter)
Weight	13.8 g (0.03 lbs) with battery
Power Source	One (1) 1.55V button cell battery (SR626SW, 377 or IEC-SR66)
Battery Life	Approx. 14 months
Ink Cartridge	2.3 mm (diameter) x 67 mm (length) 0.09" (diameter) x 2.64" (length)

File Formats

Digital Page	ACECAD digital page file format (DHW)
e-Book File	ACECAD e-Book file format (DND)

System Requirements

Operating System	Windows 2000 or XP
CPU	500 MHz Pentium III or better
RAM	128 MB or more recommended
Equipment	Available USB port CD-ROM drive
Hard Disk Space	32 MB

Environment

Operating Temperature	0 °C to 40 °C (32 °F to 104 °F)
Operating Humidity	Less than 85% (no condensation)
Storage Temperature	-20 °C to 60 °C (-4 °F to 140 °F)

Note! These specifications are subject to change without notice.

ACECAD®

www.acecad.com.tw

Part Number: 91100-40590
English Version v1.0
Printed in China 2006.09