

 PEGASUS[®]

W1600

2 OR 3-needle, Cylinder bed,
interLOCK StitCh maChines



The brand-new needle thread take-up mechanism, MULTI-THREAD CONTROL SYSTEM!



It is the first of its kind in the sewing machine industry. Cost-effective machines that can respond to various applications, with all of the necessary functions.

Point 01

You can select tight or soft stitches.

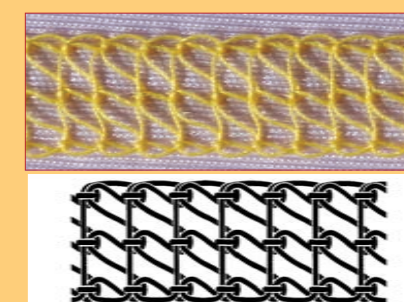
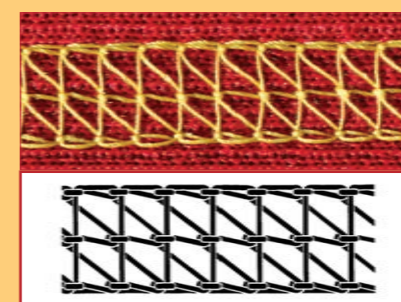
Equipped with a new needle thread take-up mechanism by MULTI-THREAD CONTROL SYSTEM (U.S. PAT.P.), which is the first of its kind in the sewing machine industry.

All you have to do is switch the direction in which the needle thread take-up is installed, as shown below. One machine can produce both tight and soft stitches.

Tight seam



Soft seam



For binding (-02 type)



For covering (-03 type)



For hemming (-08 type, -35 type)

Point 02

A multifunction machine that plays four roles (-01 type)

You simply change parts to perform other operations.

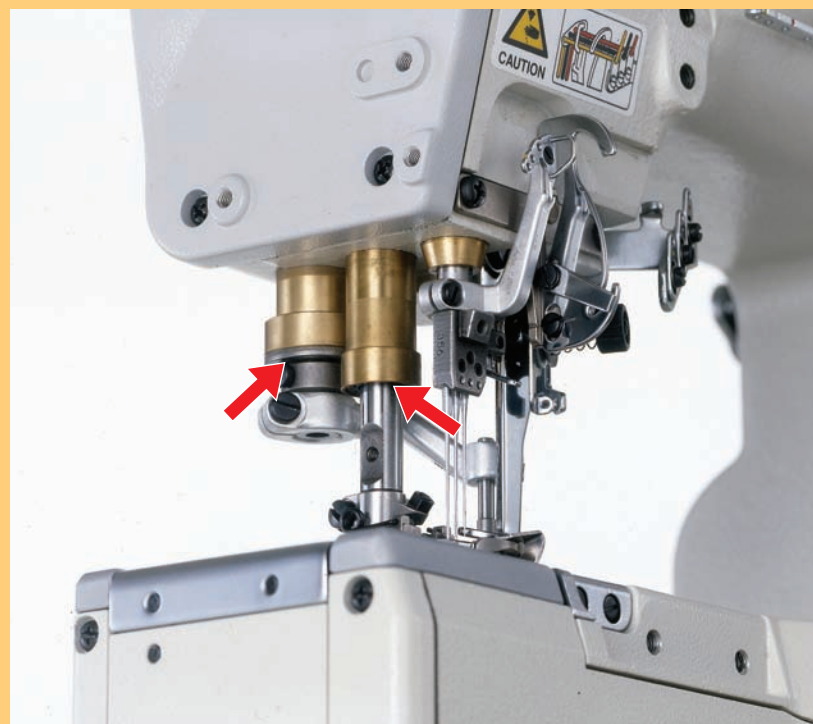
The machine can perform covering, hemming and binding operations in addition to basic sewing. This feature cuts down your investment in your plant and equipment, and reduces storage space.



Point 03

The W1600 Series machines can go through the cross seam sections smoothly.

Thanks to the newly introduced tilt adjustments that can be made on the operator's side of the presser foot, the presser foot holds the fabric effectively and the machines can go through the cross seam sections easily, increasing the quality of the sewn products and decreasing operator fatigue.



Point 04

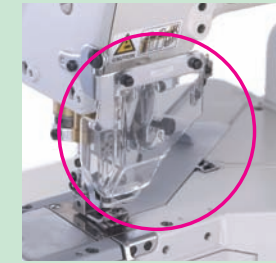
Excellent oil blocking effectiveness eliminates the problem of oil stains.

Equipped with an oil blocking mechanism in each related area, the W1600 Series machines protect your important sewn products from oil stains, thus reducing stain removal operations. Therefore, productivity is increased, and quality sewn products are achieved.

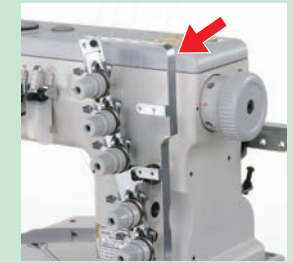
◆ Close-up

■ User-friendly design that responds to the users' needs for ease of operation

The W1600 Series machines have been developed with safety in mind, such as the large-sized eye guard, the thread guide that prevents the thread from winding around the handwheel and the needle bar enclosed in the machine. The whole looper thread take-up bracket can be removed, so maintenance, such as cleaning, is easy. In addition, this bracket can be lifted with a pushbutton to where threading can be easily achieved.



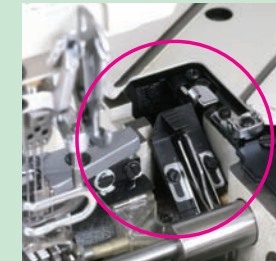
Large-sized eye guard



Thread guide



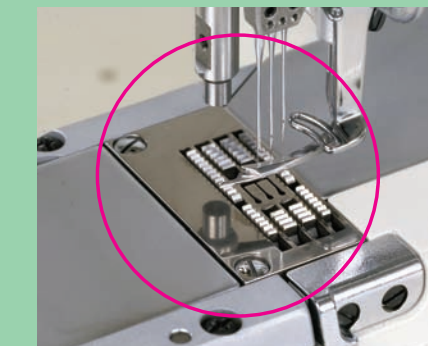
Needle bar enclosed in the machine



■ Increased durability

The lower shaft mechanism, which is important among the driving parts of the machines, employs an internal forced lubrication system, and the upper shaft mechanism employs a shower type lubrication system. These features eliminate the trouble of wear and/or seizing caused by friction.

Some parts, such as the needle plate and presser foot lift lever, are surface-coated with a special material, in order to prevent deterioration.



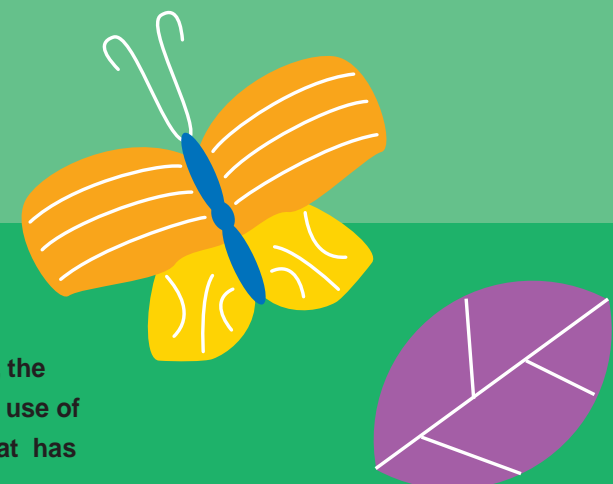
■ Economical!

The gauge parts and machine table (*) are compatible with those of PEGASUS' conventional machines. Thanks to this feature, you will utilize your existing property.

* Except a semi-submerged table

■ Eco-friendly machines

About more than 90% of machine heads can be recycled. In addition, the W1600 Series machines have other eco-friendly features, such as the use of labeled resin parts, providing for a reduction in the use of material that has an impact on the environment, etc.



W1600 Devices

Thread trimmer (UT)

All you have to do is press the treadle with the heel. Threads are cut easily. There is no need for the operator to cut the threads using scissors when sewing is completed. This feature greatly enhances operation efficiency. If this device includes the presser foot lift function, which raises the presser foot automatically after the thread is cut, the operator can place the next fabric quickly.



Underbed thread trimmer

Cuts the needle and looper threads. The needle thread is raised from the needle plate using the needle thread wiper, so the operator can proceed immediately to the next operation.

Two types of drive methods are available, pneumatic and electric.



Top cover thread trimmer

Cuts the top cover thread while the underbed thread trimmer cuts the needle and looper threads. This trimmer eliminates the tedious job of manually cutting the top cover thread, dramatically increasing efficiency, especially when a top cover thread is employed for an operation. The pneumatic type of drive method is available.

W1600			Type	Function							
01	03	08		Under thread trimmer		Top cover thread trimmer		Needle thread wiper		Presser foot lifter	
				Electric	Pneumatic	Electric	Pneumatic	Electric	Pneumatic	Electric	Pneumatic
—	—	○	UT1E	○				○		○	
○	○	—	UT1L	○						○	
○	○	○	UT2L	○		○				○	
○	—	○	UT3J		○				○		○
○	○	—	UT3M		○						○
○	○	○	UT4M		○		○				○

Presser foot lifter (PL)

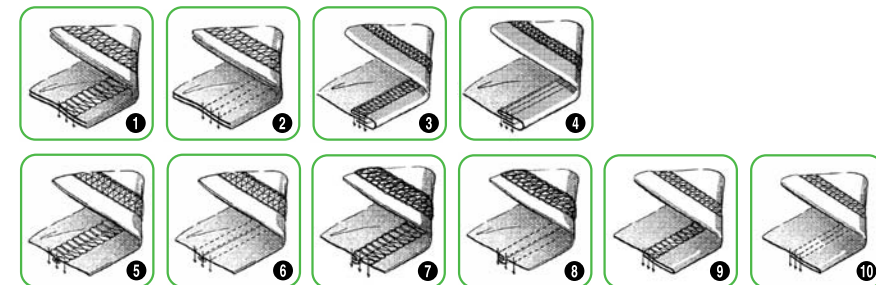
Pressing the treadle with your heel raises the presser foot. This device is easy to use, thus decreasing productivity.



W1600 Subclasses

Model	W1662-01	W1662-03	W1662-08	W1662-35
Application	Versatile machines for various applications, such as plain seaming, covering, hemming	Covering	Hemming	
Stitch type	406/407/602/605			
Seam specifications	①②③④⑤⑥⑨⑩	⑤⑥⑦⑧	⑨⑩	
No. of needles	2/3			
No. of threads	3/4/5			
Max. machine speed(rpm)	6,000			5,000
Needle space(mm)	4.0/4.8/5.6/6.4	5.6/6.4	4.8/5.6/6.4	
Main feed dog's movement amount(mm)	1.0~4.4			
Diff. feed dog's movement amount(mm)	0.8~6.0			0.8~4.5
Max. presser foot lift(mm)	2-needle:5.4 3-needle:5.8	5.8		
Needle bar stroke(mm)	31			
Main feed adjustment	Push button			
Differential feed adjustment	Lever			
Accessories	Hemming guide, Binder bracket, Covering guide	Covering guide	Hemming guide	
Standard equipment	Needle and thread cooling device(HR)			Fabric edge trimmer(FT), Needle and thread cooling device(HR)
Option	Thread trimmer(UT)			
Remarks		-03F:Folding over overlock seams -03G:Flattening out overlock seams		

*Each specification varies according to sewing conditions.



Application

Model	Fabric weight			T shirt	Polo shirt	Athletic wear	Active wear	Camisole	Under shirt	Briefs	Panties	Lingerie	Baby wear
	Light	Medium	Heavy										
W1662-01				●	●	●	●	●	●	●	●	●	●
W1662-03				●	●	●	●	●	●	●	●	●	●
W1662-08				●	●	●	●	●	●	●	●	●	●
W1662-35				●	●	●	●	●	●	●	●	●	●



PEGASUS SEWING MACHINE MFG.CO.,LTD.
 5-7-2,Sagisu,Fukushima-ku,Osaka 553-0002,Japan
 Phone:81-6-6458-4739 Telefax:81-6-6454-8785
<http://www.pegasus.co.jp>

※ The specification and/or appearances of the equipment described in this catalog is subject to change because of modification without previous notice.