



G-PROJECT™

G-GRIP

PORTABLE WIRELESS SPEAKER

 **Bluetooth®**



Rechargeable Battery
8 Hours Play Time



Compact & Powerful
Bass Boom Radiator



GRP Glass-Reinforced
Polymer Chassis



G-PROJECT™

Welcome to G-PROJECT™

Thanks for purchasing a G-GRIP and joining the G-Project. With just the right combination of performance, durability, features, and style at the right price, our goal is to provide rugged speakers and accessories that fit your modern lifestyle. We hope you agree.

For more info, please visit our website at [**www.enterG-project.com**](http://www.enterG-project.com)

PACKAGE CONTENTS:

- G-GRIP
- AC Power Adapter
- Micro USB Charging Cable
- Wrist Strap
- 3.5mm Line In Audio Cable
- User Guide

G-GRIP

PORTABLE WIRELESS SPEAKER

IMPORTANT SAFETY NOTIFICATIONS



CAUTION: TO REDUCE THE RISK OF ELECTRIC SHOCK, DO NOT REMOVE COVER (OR BACK). NO USER-SERVICEABLE PARTS INSIDE. REFER SERVICING TO QUALIFIED SERVICE PERSONNEL.



DANGEROUS VOLTAGE: The lightning flash with arrowhead symbol, within an equilateral triangle is intended to alert the user to the presence of uninsulated dangerous voltage within the product's enclosure that may be of sufficient magnitude to constitute a risk of electric shock to persons.



ATTENTION: The exclamation point within an equilateral triangle is intended to alert the user to the presence of important operating and maintenance (servicing) instructions in the literature accompanying the appliance.

NOTE: Any unapproved changes or modifications will void the warranty.



G-PROJECT™

IMPORTANT SAFETY INSTRUCTIONS

1. Read and keep these instructions
2. Follow all instructions and heed all warnings
3. Do not use G-GRIP near water or expose it to dripping or splashing
4. Clean only with a dry cloth
5. Do not block any ventilation openings
6. Do not place near any heat sources such as radiators, heat registers, stoves, or other devices (including amplifiers) that produce heat
7. Only use attachments or accessories approved by G-Project
8. Refer all servicing to qualified service personnel. Servicing may be required when:
 - a. G-GRIP has been damaged in any way or does not operate normally
 - b. the power supply cord or plug have been damaged
 - c. G-GRIP has been exposed to rain, moisture, or other liquids
 - d. objects have fallen into G-GRIP
 - e. G-GRIP has been dropped

WARNING:

- Never remove the casing of G-GRIP
- Never lubricate any part of G-GRIP
- Never place G-GRIP on other electrical equipment

NOTICE FOR THE USA AND CANADA

This device complies with Part 15 of the FCC Rules and RSS standard of Industry Canada. Operation is subject to the following two conditions:

1. this device may not cause harmful interference, and
2. this device must accept any interference received, including interference that may cause undesired operation.

This speaker has been tested and found to comply with the limits for a Class B digital device, pursuant to part 15 of the FCC Rules and ICES-003 of Industry Canada.

These limits are designed to provide reasonable protection against harmful interference in a residential installation. This speaker generates, uses, and can radiate radio frequency energy and, if not installed and used in accordance with the instruction manual, may cause harmful interference to radio communications.

However, there is no guarantee that interference will not occur in a particular installation. If this speaker does cause harmful interference to radio or television reception, which can be determined by turning the speaker off and on, the user is encouraged to try to correct the interference by one or more of the following measures:

- Relocate the receiving antenna
- Increase the separation between the speaker and the receiver
- Connect the speaker into an outlet on a circuit different from that to which the receiver is connected
- Consult the dealer or an experienced radio technician for help



G-PROJECT™

CAUTION

NOTICE: Any changes or modifications made to this device that are not expressly approved by G-Project may void the user's authority to operate the equipment.

SPECIFICATIONS

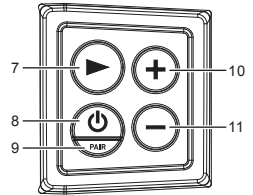
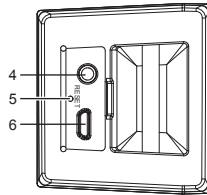
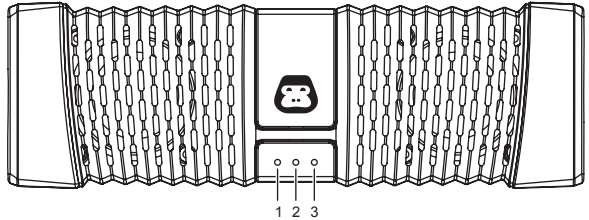
Power Adapter Input	100 - 240V AC, 50Hz/60Hz
Power Adapter Output	5V DC, 1300mA, Center positive
Bluetooth v2.1 compliant	supports Enhanced Data Rate (EDR) and A2DP
Battery.....	3.7V, 800mAh, Rechargeable Lithium-ion
Power Output	2W x 2
Output Level	85dB at 0.5m
Frequency Response	60Hz - 20kHz
Speakers	1.5" x 2 acoustic drivers with Neodymium magnets
Radiator.....	Rear firing passive radiator
Battery Playback Time.....	Up to 8 hours
Battery Recharging Time.....	~3.5 hours

G-GRIP

PORTABLE WIRELESS SPEAKER

LOCATION OF CONTROLS

1. Power / Charging LED
2. Charging LED / Low battery indicator LED
3. Bluetooth LED
4. 3.5mm AUX Input
5. Reset Button
6. 5V DC Power Input
7. Mode / Play Button
8. Power Button
9. Pair Button
10. Volume + Button
11. Volume - Button





G-PROJECT™

INDICATORS

BLUETOOTH LED

When Bluetooth is in pairing mode, the Bluetooth LED will flash blue.

Once Bluetooth has paired successfully, the Bluetooth LED will turn solid blue.

If G-GRIP has not paired with another device after 30 minutes, it will stop trying to pair and turn off.

POWER / CHARGING LED

The red and white LEDs indicate the following statuses:

Power Adapter	Battery	Power	White LED	Red LED	Status
Connected	Full	OFF	OFF	OFF	--
Connected	Not Full	OFF	OFF	ON	Battery charging
Connected	Full	ON	ON	OFF	--
Connected	Not Full	ON	ON	ON	Battery charging
Not Connected	Not Full	ON	ON	OFF	Using battery power
Not Connected	Low	ON	ON	<i>Slow flash for 3 min</i>	Battery low
Not Connected	Very Low	ON	ON	<i>Fast flash for 2 min</i>	Battery very low
Not Connected	Empty	OFF	OFF	OFF	Power off, cannot power on

G-GRIP

PORTABLE WIRELESS SPEAKER

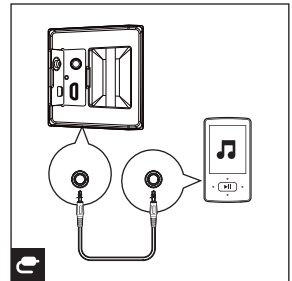
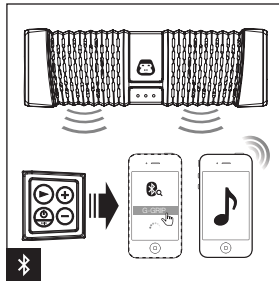
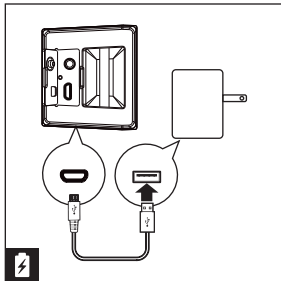
CONNECTIONS and MODES

CHARGING MODE (left) - For a full charge, plug G-GRIP into your Power Adapter or computer via the micro USB charging cable (included)

NOTE: A full charge takes up to 3.5 hours

BLUETOOTH MODE (center) - Pair and connect your Bluetooth device (see the Pairing section for instructions) to stream audio wirelessly (make sure that no cable is connected to the AUX Input)

AUX MODE (right) - Connect a 3.5mm cable (included) from the AUX Input to your audio device and initiate playback





G-PROJECT™

OPERATION

POWER ON / OFF

- 1 In Standby mode, press the Power Button to turn G-GRIP on
- 2 If a 3.5mm cable is connected to the AUX Input, G-GRIP will default to AUX mode
- 3 If no cable is connected to the AUX Input, G-GRIP will switch to Bluetooth mode and begin Bluetooth pairing
- 4 While G-GRIP is on, press the Power Button again to turn G-GRIP off
- 5 The speaker will automatically turn off if there is no audio playback for 30 minutes

VOLUME CONTROL

- The volume level can be set from 0 - 15 (the default level is 10)
- G-GRIP will remember the volume setting when it is turned off

PLAYBACK MODES

- If a 3.5mm cable is connected to the AUX Input, G-GRIP will default to AUX mode
- If no cable is connected to the AUX Input, G-GRIP will switch to Bluetooth mode and begin Bluetooth pairing
- To return to AUX mode, simply connect a 3.5mm cable to the AUX Input

BLUETOOTH OPERATION

Pair with Bluetooth* capable devices to stream stereo audio wirelessly for music, movies, video games and apps.

PAIRING

- 1 In Standby mode, press the Power Button to turn G-GRIP on and begin Bluetooth pairing (make sure that no cable is connected to the AUX Input). The Bluetooth LED will flash blue
 - 2 On your Bluetooth device, select “G-GRIP” from the device list to pair with it (no password is required). Once Bluetooth has paired successfully, the Bluetooth LED on G-GRIP will turn solid blue
- NOTE:** Even if G-GRIP changes to AUX mode, the Bluetooth LED will remain blue
- 3 To clear the Bluetooth memory on G-GRIP, turn G-GRIP on and hold the Pairing Button for a few seconds

* Compatible up to 30' range with A2DP Bluetooth capable devices.



G-PROJECT™

MUSIC PLAYBACK

- Pressing the Mode / Play Button while in Bluetooth mode will play or pause the audio playback on your Bluetooth device
- Pressing the Mode / Play Button quickly 2x while in Bluetooth mode will skip to the next track on your Bluetooth device
- Pressing the Mode / Play Button quickly 3x while in Bluetooth mode will skip to the previous track (or to the beginning of the current track depending on the paired device)

TROUBLESHOOTING

Issue	Solution
Distortion	Lower the volume on your G-GRIP and/or audio source
Not loud enough	Turn up the volume on your G-GRIP and/or audio source
Intermittent sound	Recharge the batteries using the included Power Adapter
	If using Bluetooth, move the audio source and G-GRIP closer together (within the 30' range)
	Unpair G-GRIP from your Bluetooth device (<i>check with your device manufacturer for more information about Bluetooth pairing</i>), then re-pair following the steps in the section BLUETOOTH OPERATION
Cannot play audio via Bluetooth	Confirm your device is A2DP Bluetooth compatible. Ensure that both your Bluetooth device and G-GRIP are not connected to any other devices
	If your G-GRIP is connected to a Line In source, the Bluetooth will not function. Unplug the 3.5mm Line In cable and press the Pair Button to switch to Bluetooth
	Unpair G-GRIP from your Bluetooth device (<i>check with your device manufacturer for more information about Bluetooth pairing</i>), then re-pair following the steps in the section BLUETOOTH OPERATION



G-PROJECT™

For further assistance, please visit our website at ***www.enterG-project.com***
or contact customer service at ***support@enterG-project.com*** or ***1-855-896-1795***

Life Lab International Ltd.