

Figure 4-1. Digivance Element Management System Main Window

9. Open the **View** drop down menu and connect to the Host and Remote pair by selecting “NotNamed/NotNamed”. The **HOST Alarms** display and the **REMOTE Alarms** display will open within the main window as shown in [Figure 4-2](#).
10. Verify that the Host and Remote Unit are loaded with the current system software and download the current software to both the Host and the Remote unit if necessary. Refer to [Section 2.2](#) for details.

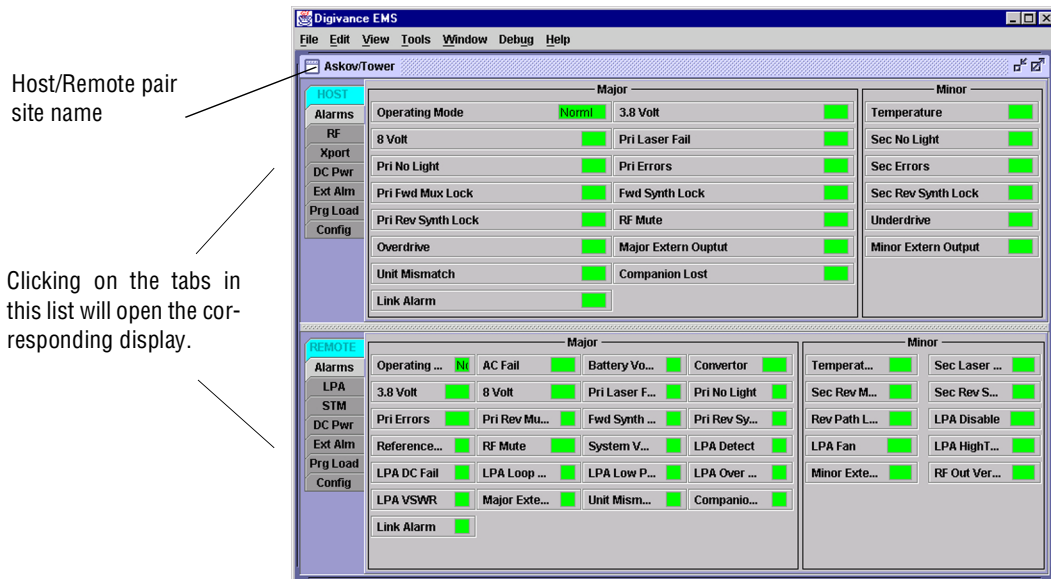


Figure 4-2. Selecting Display Tabs

11. Click on the **HOST Config** tab and on the **REMOTE Config** tab (see [Figure 4-2](#)). The **HOST Config** display and the **REMOTE Config** display will open within the main window.
12. Enter the **Site Name** and **Site Number** for both the HOST and the REMOTE unit. Refer to [Section 2.4](#) for details.
13. If the site has multiple host units, reconnect the CAN cables to the HU's NET IN and NET OUT ports.
14. Verify that no Major (except Major Extern Alarm) or Minor alarms are being reported in either the **HOST Alarm** displays and that all alarm fields (except Major Extern Alarm) are green.
15. Click on the **HOST RF** tab (see [Figure 4-2](#)). The **HOST RF** display will open within the main window.
16. Enter the **Host Fwd Att** (Forward Attenuation) values. This sets the forward input RF signal level at the HU. Refer to [Section 2.5](#) for details. By default, this value is set to 0 dB. If the DRIVE LED on the HU front panel was red, it should turn green when this step is completed.
17. Determine if the RF output power at the STM ANTENNA is at the correct level per channel up to a composite maximum of +40.5 dBm. Refer to [Section 2.6](#) for details.
18. Place the MUTE/NORM/RESET switch (on LPA front panel) in the **NORM** position.
19. Verify that the STATUS indicator (on LPA front panel) turns from steady green to blinking green.
20. Click on the **REMOTE LPA** tab (see [Figure 4-2](#)). The **REMOTE PA** display will open within the main window.
21. Enter the **Remote Fwd Att** value. This adjusts the RF output signal level at the STM ANTENNA port. Refer to [Section 2.7](#) for details. By default this value is set to 0 dB.
22. Click on the **HOST RF** tab (see [Figure 4-2](#)). The **HOST RF** display will open within the main window.
23. Enter the **Host Rev Att** (Reverse Attenuation). This sets the reverse output RF signal levels at the HU. Refer to [Section 2.8](#) for details.
24. If a delay adjustment is required per the system design plan, enter the **Host Fwd Delay** and **Host Rev Delay** values. By default, the delay values are set to 0. Refer to [Section 2.9](#) for details.
25. If a separate laptop computer loaded with the EMS software was used to initially configure the system, disconnect the laptop computer from the SERVICE connector on the HU front panel.

▶ **Note:** For continuous monitoring of alarms, each HU and RU pair must remain permanently connected to a PC-type desktop computer loaded with the EMS software. When two or more systems are connected together through the CAN interface, only one EMS computer is required to manage the networked HU and RU systems. The EMS computer may be connected to the SERVICE port on any one of the HUs in the network.
26. Reconnect the external alarm system or notify the alarm system provider that the turn-up process has been completed.

2.2 Verify/Download HU and RU System Software

The HU's and RU's may require a system software download if they are not loaded with the current system software. Use the following procedure to check the version number of the system software and if necessary to download the current system software:

1. Click on the **HOST Prg Load** tab and on the **REMOTE Prg Load** tab. The **HOST Prg Load** display and the **Remote Prg Load** display will open within the EMS main window as shown in [Figure 4-3](#).

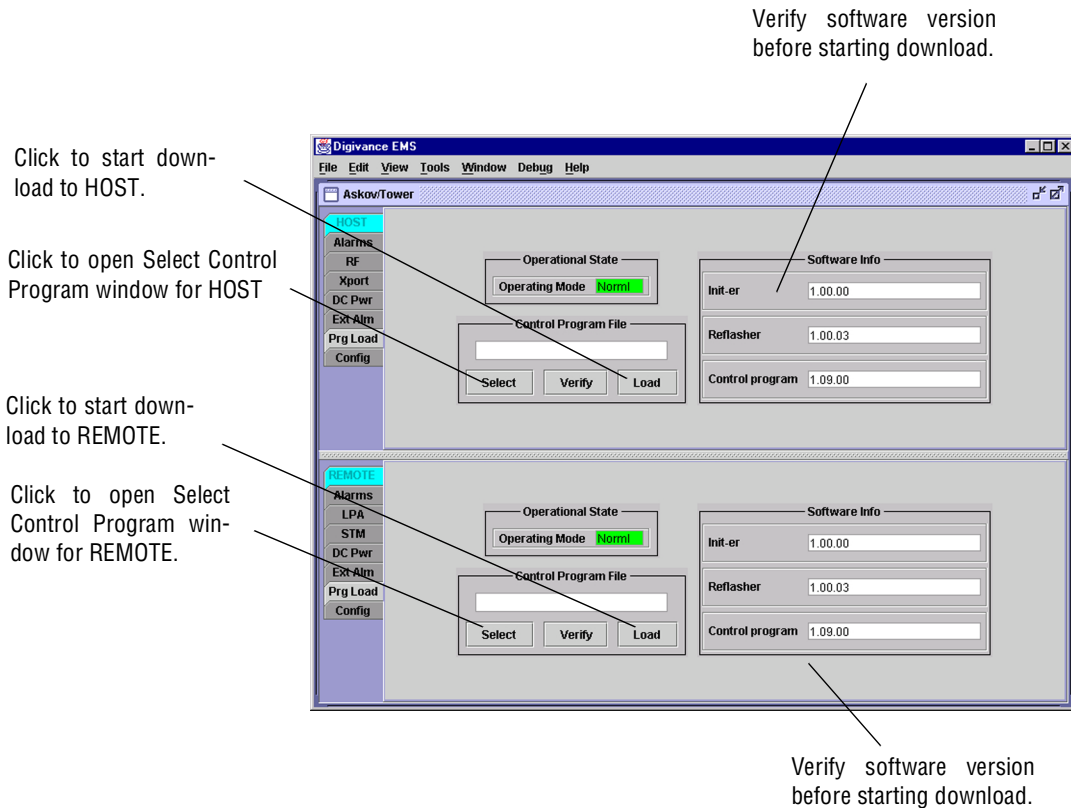


Figure 4-3. HOST and REMOTE Prg Load Displays

2. Click on the **HOST Select** button (see [Figure 4-3](#)). The **Select Control Program File** window will open as shown in [Figure 4-4](#). Browse until the folder where the Control Program files are located is selected and the software files are displayed in the window.
3. Check the software version numbers shown in the **Software Info** section of the **Prg Load** display against the version numbers of the software files displayed in the **Select Control Program File** window. If files in the **Select Control Program File** window are a later version than those shown in the **Prg Load** display, proceed with the software download. If the version numbers shown in the **Software Info** section are the same as the version numbers of the files in the **Select Control Program File** window, the software download is not required.