

- 6. Click on the **Load** button to start downloading the program. This causes the operating mode to change automatically to PrgLd or FPGALd (Figure 43), followed by a progressive fill-in of the progress bar (Figure 44).



Figure 43. Changing Mode

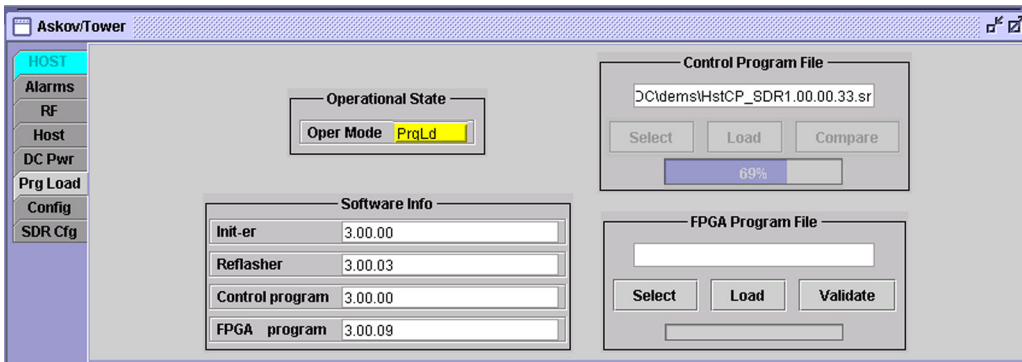


Figure 44. Program Load Progress

- 7. When the program download has been completed, the message shown in Figure 45 appears.

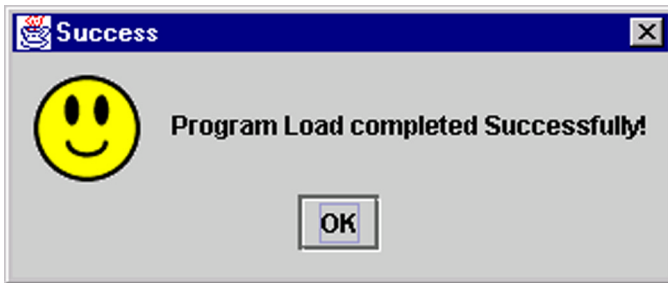


Figure 45. Done Message

3.15 Viewing the EMS Log File

The EMS log file (by default, `demis.xml`) serves as a repository for status and alarm records written by the EMS software. Within the file, the records are stored in an “extended markup language” (xml) format that can be displayed by most internet browsers. Each separate record is preceded and ended by the tag `<logrec>` which can be seen in the example shown in [Figure 46](#).

NOTE: The instructions below show functions and displays from MicroSoft Internet Explorer. Most other internet browsers have similar functions and displays.

To view the log file using an internet browser

1. Start the internet browser.
2. In the internet browser, select **File⇒Open** (or comparable function) to select and open the EMS log file.
3. The log file displays in the browser window as shown in [Figure 46](#).

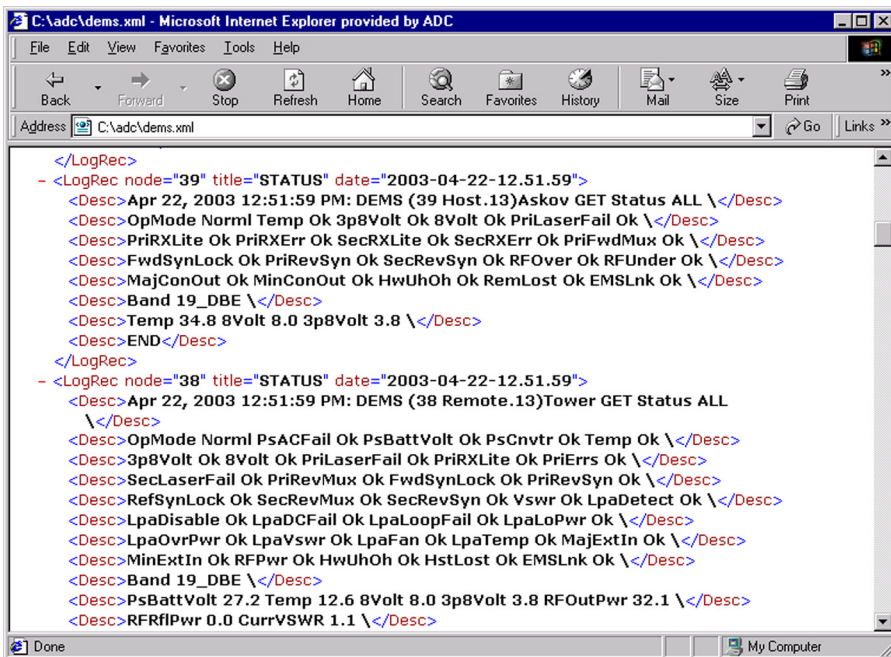


Figure 46. Log File Displayed in Internet Browser

To use the log file

1. Scroll down through the records. Note that the records are displayed in chronological order from most recent to oldest.
2. Use the search function of the browser (**Edit**⇒**Find (on This Page)** or comparable function) to find particular types of records or a particular item such as PSBattVolt in [Figure 47](#).
3. To open or close a record, click on the minus or plus sign on the left of the entry (“-” closes the entry, “+” opens it).

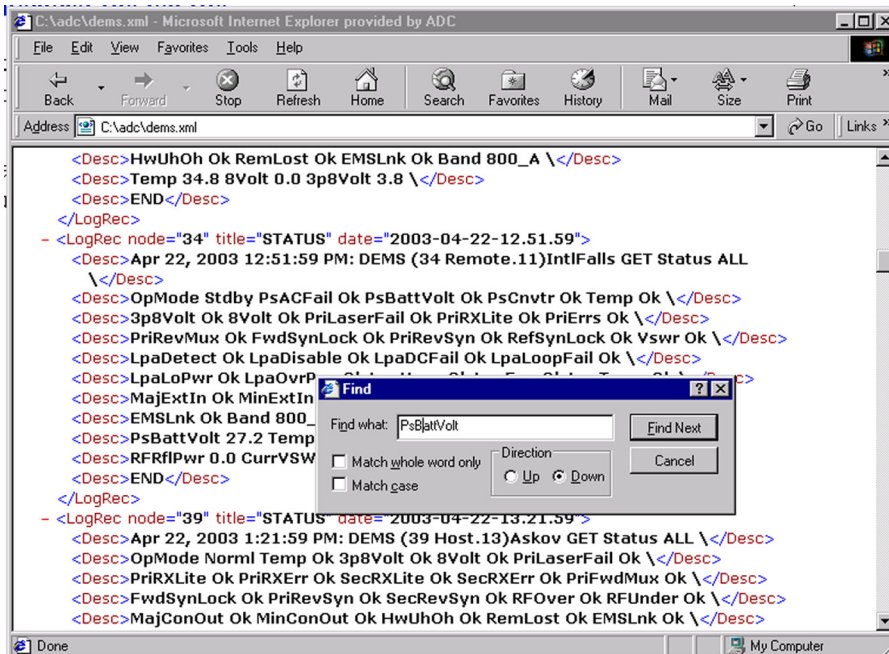


Figure 47. Searching the Log File

4 SCREEN-BASED REFERENCE

101011

4

SCREEN-BASED REFERENCE

This section contains examples and descriptions of the EMS Maintenance Interface “screens.” The descriptions cover all menu items, all “dashboard” indicators, all mouse-selectable controls, and all data entry fields.

4.1 EMS Pull-Down Menus

The EMS toolbar, shown in [Figure 48](#), is a standard Windows application toolbar with pull-down menus. It is present at all times when EMS is running.



Figure 48. EMS Toolbar

4.1.1 File Menu

The **File** menu has one item, **Exit**. Selecting this item terminates the program.

4.1.2 Edit Menu

The **Edit** menu contains standard Windows items plus a **Preferences** item which is unique to EMS. **Copy** and **Paste** can be used to copy text from the NOC-NEM terminal (within the Maintenance Interface) to an outside application such as a text editor. **Cut** does the same as **Copy**.

Selecting the **Preferences** item in the **Edit** menu displays the **Preferences** window, shown in [Figure 49](#). The **Preferences** window is used in defining EMS ports and paths for system files, as well as for several other system options. [Table 4](#) describes the items in the **Preferences** window.

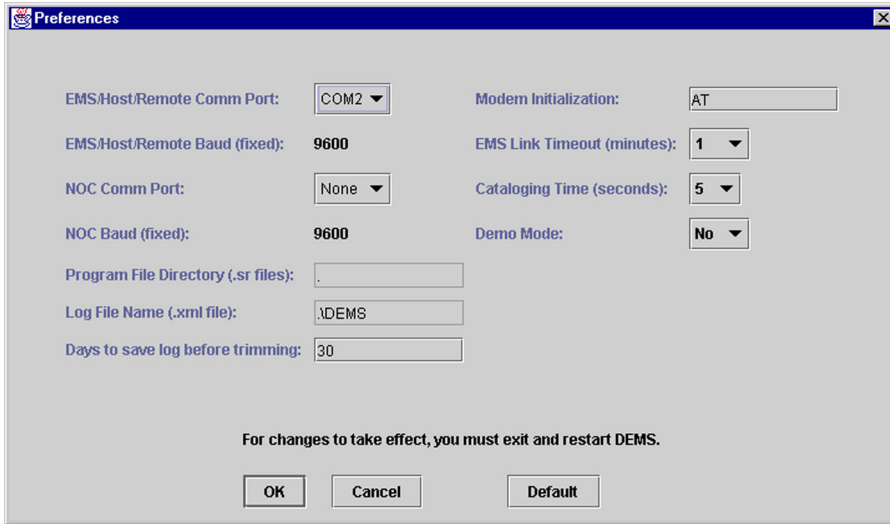


Figure 49. Preferences Window

Table 4: View Menu Items

MENU ITEM	DESCRIPTION
EMS/Host/Remote Comm Port	System port connected to an individual host/remote pair or to the first pair in the Controller Area Network (CAN). To select a port, select from the pull-down menu (selections available are PC-specific).
EMS/Host/Remote Baud	Data transfer rate for the above port. Cannot be changed.
NOC Comm Port	Optional port providing a remote NOC-NEM interface. To select a port, select from the pull-down menu.
NOC Baud	Data transfer rate for the above port (cannot be changed).
Program File Directory	Directory (folder) where control programs and FPGAs are stored for downloading to EMS network elements. This directory opens by default when a program is selected for downloading in the Prg Load window. To change, click on the field and browse to select a directory in the dialog window, then click on OK in the dialog window.