



iMouse™ T30

Wireless Programmable Ergonomic Trackball Mouse



Model: iMouse™ T30

QuickGuide

English

www.adesso.com

LIMITED WARRANTY

Adesso provides a one year limited warranty for all of its products against defects in material and workmanship.

During this period, Adesso will repair or replace any product which proves to be defective. However, Adesso will not warranty any product which has been subject to improper freight handling, shipping abuse, neglect, improper installation or unauthorized repair. The warranty will not cover products installed with components not approved by Adesso and products where the sealed assembly trace has been broken.

If you discover a defect, Adesso will, at its option, repair or replace the product at no charge to you provided you return it during the warranty period with freight charges pre-paid to Adesso. Before returning any product, you must obtain a Return Merchandise Authorization number (RMA). This RMA # must be clearly marked on the outside of the package you are returning for warranty service. Be certain to also include your name, shipping address (no PO Boxes), telephone number, and a copy of the invoice showing proof of purchase in the package.

SUPPORT

We have listed most of our FAQ's (Frequently Asked Questions) at: <http://www.adesso.com/faqs.asp>. Please visit our FAQ Service & Support pages before you contact our E-mail or Telephone Support.

Email Support: If our FAQ's do not help you resolve your issues, please email support@adesso.com

Telephone Support:
Toll Free: (800) 795-6788
9:00AM to 5:00PM PST Monday - Friday

INTRODUCTION

Meet one of the newest models of the Adesso Trackball product line, the Adesso iMouse™ T30. It incorporates the palm grip design where each user can rest his entire hand over the mouse. This design encourages users to move their cursor by rotating the track ball using their thumb and reduces the need of hand movement. It is cable-free by utilizing the 2.4 GHz radio frequency technology, offering a wireless range of up to 30 feet. It's also fully programmable, meaning every mouse button can be customized to your preferred function with its programmable driver. With its 5 levels of DPI resolutions (400-4800), the optical trackball provides superior accuracy and smooth motion, reducing hand movement and space. This mouse trackball is also easy to maintain - just push the trackball outward from its back, clean it and push it back in place. Its ergonomically contoured large size trackball further complete its ergonomic advantages, making your daily computing tasks more comfortable and stress-free.

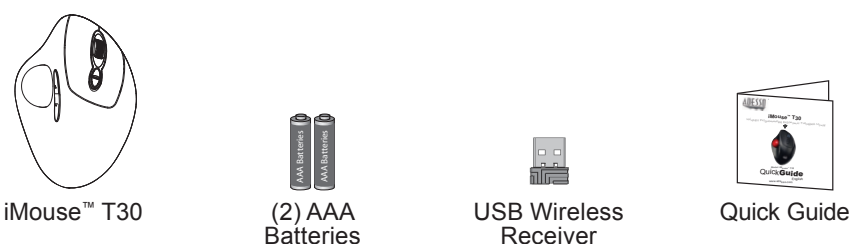
SPECIFICATIONS

Hand Orientation:	Right Handed
Tracking Method:	Optical Sensor
Connection:	2.4 GHz Radio Frequency Wireless Technology
DPI Resolution:	400-4,800 DPI Range
Working Range:	up to 30 feet (10 m)
Battery:	2 AAA Batteries
Buttons:	7 buttons(Forward & Backward, Left & Right, Scroll Wheel, DPI UP/Down) Customizable by driver.
Trackball Diameter:	1.3" (34 mm)
Dimensions:	5.5" x 3.8" x 2.0" (140 x 98 x 51 mm)
Weight:	0.3 lb. (135g)

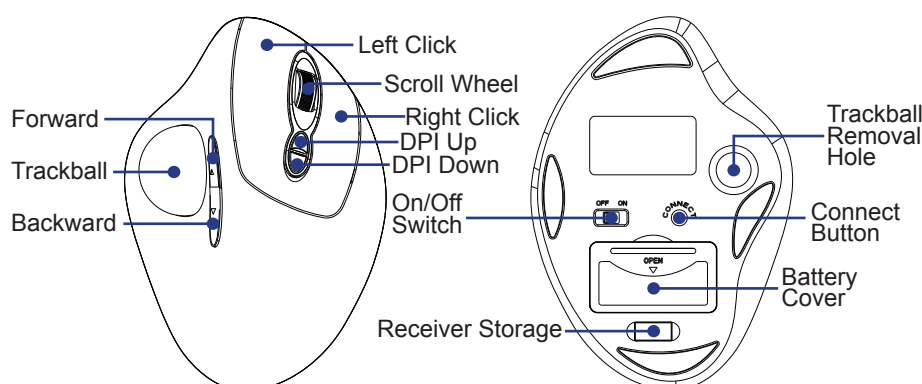
REQUIREMENTS

- Operating System: Window® 7 or above
- An available USB port for the usb wireless receiver

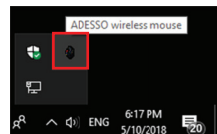
CONTENTS



DESCRIPTION



4. Once you have followed the installation steps, go into your "system tray" by clicking on the arrow located to the left of your Windows clock and click on the Trackball Mouse Icon

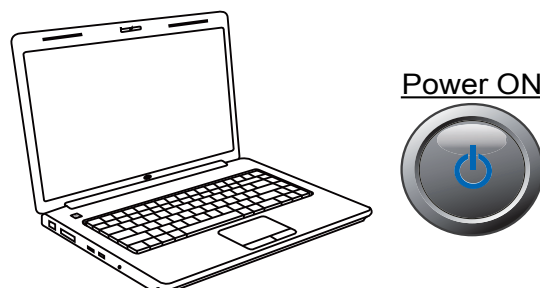


5. Once you click on the Trackball Mouse Icon, it will bring up the driver menu as shown below. Click on "Button Assignment" to change your mouse buttons

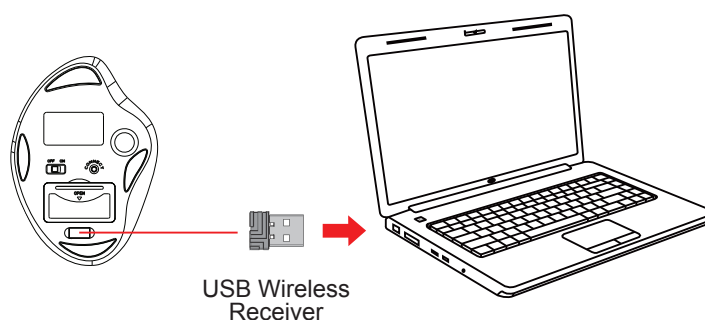


HARDWARE INSTALLATION

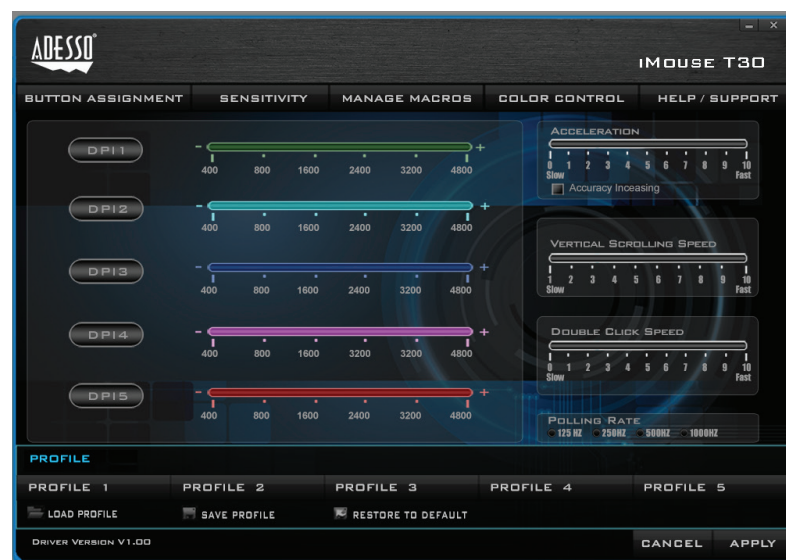
1. Turn on your computer.



2. Remove the back battery cover of the unit and locate the wireless usb receiver. Now insert it into your computer's USB port and your operating system will automatically detect and install the device.



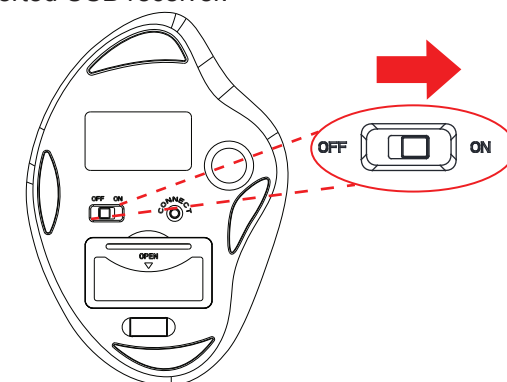
6. Click on "Sensitivity" to change the speed of your mouse cursor as well as adjust DPI settings, "Manage Macros" to assign macro keys for your mouse, "Color Control" to change the color of the scroll wheel, and "Support" for product support information.



TIPS

- When low on batteries, the Scroll Wheel LED light will flash RED repeatedly.
- To conserve battery power, please turn "OFF" the device when it's not in use.

3. Turn on your device with the ON/OFF switch. The device will automatically pair with the inserted USB receiver.



ADVANCED DRIVER FEATURES

The iMouse T30 comes with a driver for customization which allows you to customize your mouse to your preference. Change the DPI colors, reassign mouse buttons, and assign macro keys all with this included driver.

1. Please Insert below URL link into your web browser to download the iMouse T30 Driver: https://www.adesso.com/download/iMouse_T30_driver.zip
2. When the driver has finished downloading, please locate the zipped folder and unzip it to locate the setup.exe file.
3. Then execute the setup.exe to begin driver installation. Please follow the installation wizard prompt to finish the installation process.

• To re-establish connection between the device and the receiver. Follow below steps:

1. Insert the wireless USB receiver into a new USB port.
2. Turn off the device and reinsert fresh batteries.
3. Turn of the device and press the connect button within 1 feet of the wireless receiver.
4. Your device should now be connected and ready to use.

FCC CAUTION.

This device complies with part 15 of the FCC Rules. Operation is subject to the following two conditions: (1) This device may not cause harmful interference, and (2) this device must accept any interference received, including interference that may cause undesired operation. Any Changes or modifications not expressly approved by the party responsible for compliance could void the user's authority to the equipment.

NOTE: This equipment has been tested and found to comply with the limits for a Class B digital device, pursuant to part 15 of the FCC Rules. These limits are designed to provide reasonable protection against harmful interference in a residential installation. This equipment generates uses and can radiate radio frequency energy and, if not installed and used in accordance with the instructions, may cause harmful interference to radio communications. However, there is no guarantee that interference will not occur in a particular installation. If this equipment does cause harmful interference to radio or television reception, which can be determined by turning the equipment off and on, the user is encouraged to try to correct the interference by one or more of the following measures:

- Reorient or relocate the receiving antenna.
 - Increase the separation between the equipment and receiver.
 - Connect the equipment into an outlet on a circuit different from that to which the receiver is connected.
 - Consult the dealer or an experienced radio/TV technician for help.
- * RF warning for Portable device:
The device has been evaluated to meet general RF exposure requirement. The device can be used in portable exposure condition without restriction.