

EXHIBIT 7
USER'S MANUAL OF EUT

INTRODUCTION

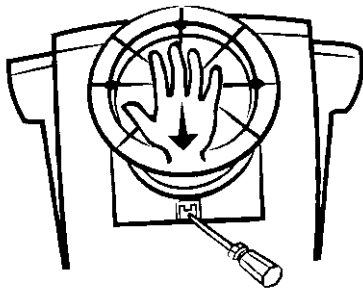
USB, called Universal Serial Bus, is a solution to complicated connectors and ports. It is implemented to ADI's new designed monitor assembly base and is applicable to ADI's MicroScan 4P and MicroScan 5P. USB hubs enable users to connect multiple devices and contain one upstream port and four downstream ports.

Features

- USB replaces all the different kinds of serial and parallel port connectors with one standardized plug and port combination.
- No-hassle way to connect a new digital joystick, a scanner, a set of digital speakers, a digital camera or a PC telephone to the PC system.
- With USB hub, users do not need to shut down and restart PC to attach or remove a peripheral. The PC and the monitor automatically detect the peripheral and configures the necessary software.
- USB hubs, also USB peripherals, allow users to put multiple devices together with additional ports and distribute electrical power to devices.
- It is compatible with Windows 95 OSR 2.1 and Windows 98.
- For stand-alone type, the one upstream port connects to your PC while the four down stream ports connect mainly to keyboard, mouse, or other devices such as a scanner, a joystick, speakers, or a PC phone.
- For add-on type, the control cable connects USB base to your monitor.

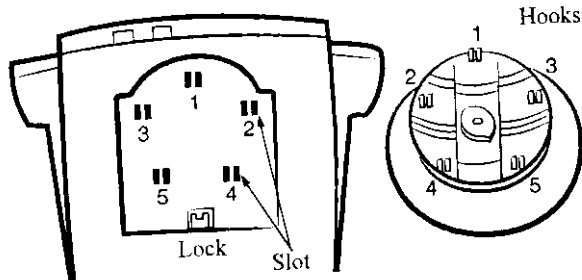
Replace the Assembly Base with USB Hub Base

First, carefully turn the monitor upside down on a safe and flat surface.

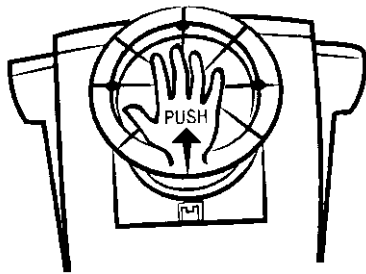


To remove the assembly base, press down the lock with a screwdriver and remove the base in the direction of the arrow.

Then install the USB hub base to complete the base installation.



Put the labeled hooks onto the corresponding slots on the bottom of the monitor.



Push down and forward the base in the direction of the arrow, until you hear the base snaps into the slots.



Caution: Do not turn on the power before the USB hub base is installed. The USB hub base is only applicable to ADI MicroScan 4P and MicroScan 5P/5P⁺.

Connection setting

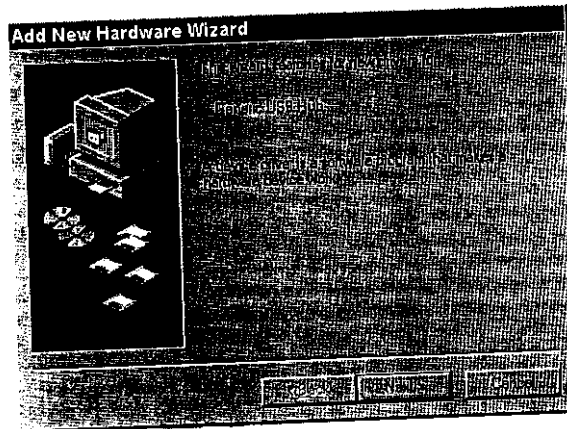
Make sure that the power of your PC, monitor and other devices is OFF.

Install USB software

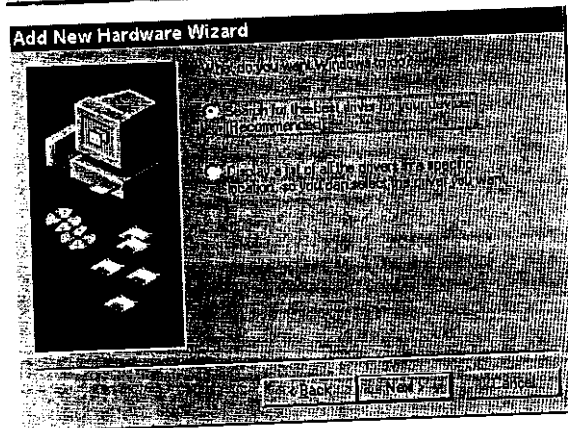
When the USB base installation is finished, turn on your PC system. The system will automatically detect the new device.

USB Hub Installation

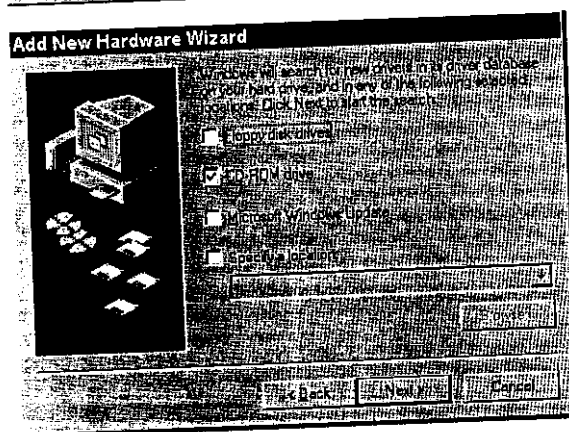
Step 1: Click Next > to start USB driver installation.



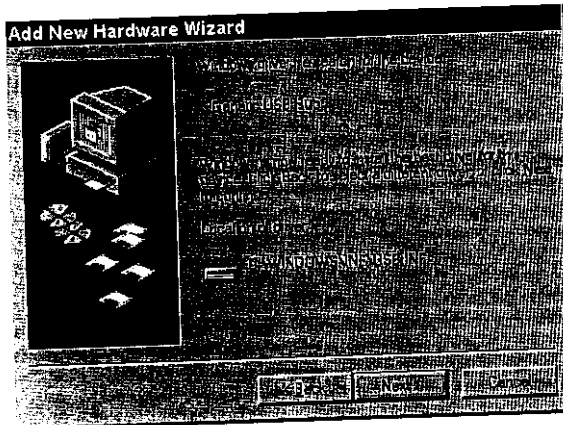
Step 2: Select "Search for the best driver for your device (Recommend)" and then click Next >.



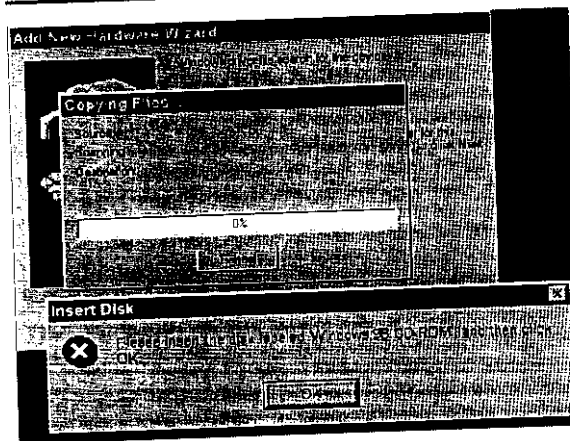
Step 3: Have your Win 98 CD-ROM ready to insert into CD-ROM driver. Tick on Win 98 CD-ROM drive and then click Next >.



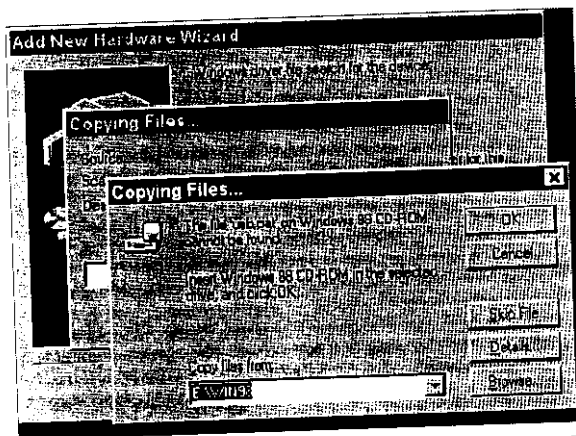
Step 4: When the Windows driver file search detects Genetic USB Hub, click on Next >.



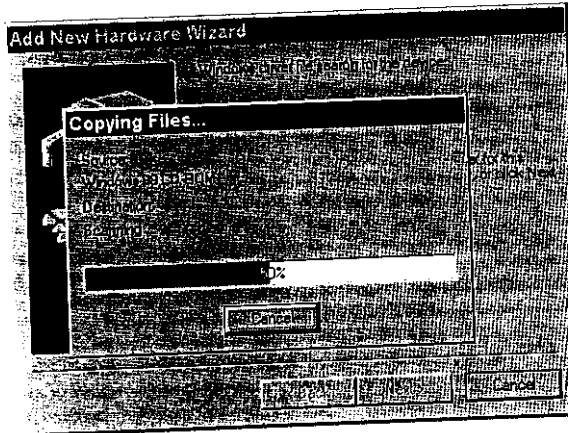
Step 5: Insert Windows 98 CD-ROM into CD-ROM driver, and click OK.



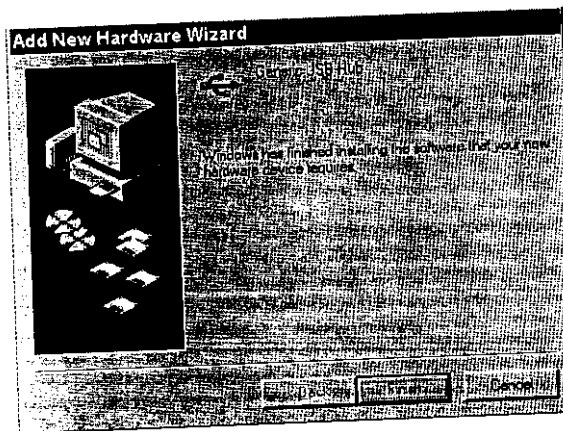
Step 6: Copy the file from where CD-ROM is. And then click OK.



Step 7: Wait for the file copying is done. If **Cancel** is clicked any time during the copying, then it will stop installing USB hub driver.



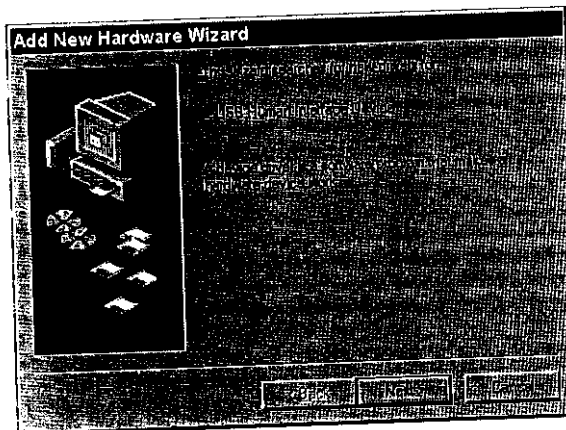
Step 8: When the installation is done, you will see a confirmation message. Click **Finish** to complete USB hub installation.



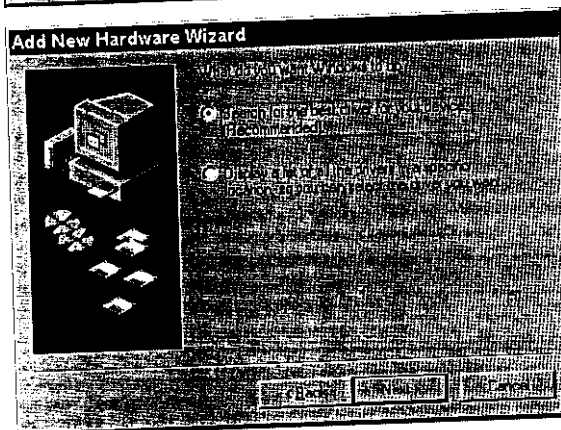
USB Monitor Installation (Only available for add-on type)

After USB hub installation
is done, your PC will also
detect USB for monitor.

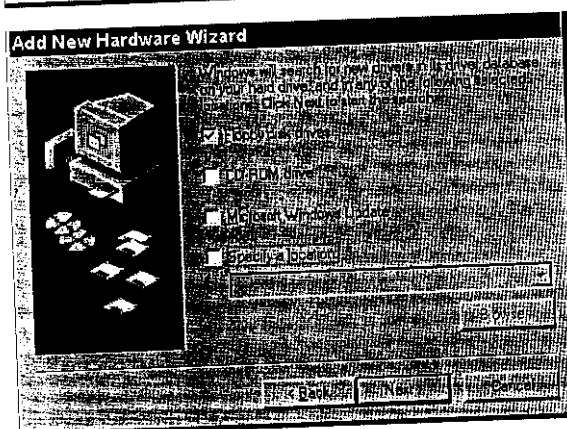
Step 1: Click **Next >** to
continue.



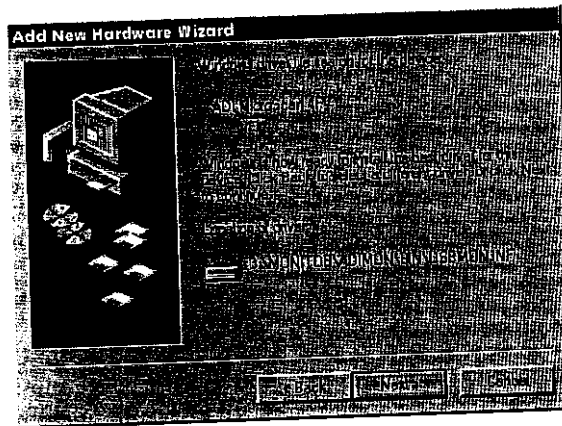
Step 2: Select "Search for
the best driver for your
device (Recommend)" and
then click **Next >**.



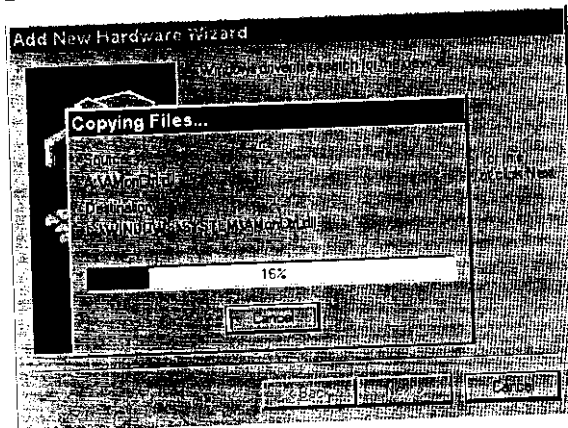
Step 3: Tick "Floppy disk
drivers" and click **Next >**.



Step 4: When Windows driver file search detects ADI MicroScan 4P/5P, click **Next >**.



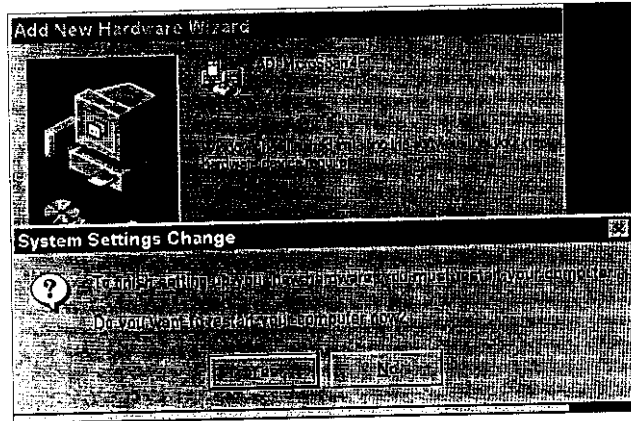
Step 5: Wait for the file copying is done. If **Cancel** is clicked any time during the copying, then it will stop installing USB monitor control driver.




Step 6: When the installation is done, you will see a confirmation message. Click **Finish** to complete USB hub installation.

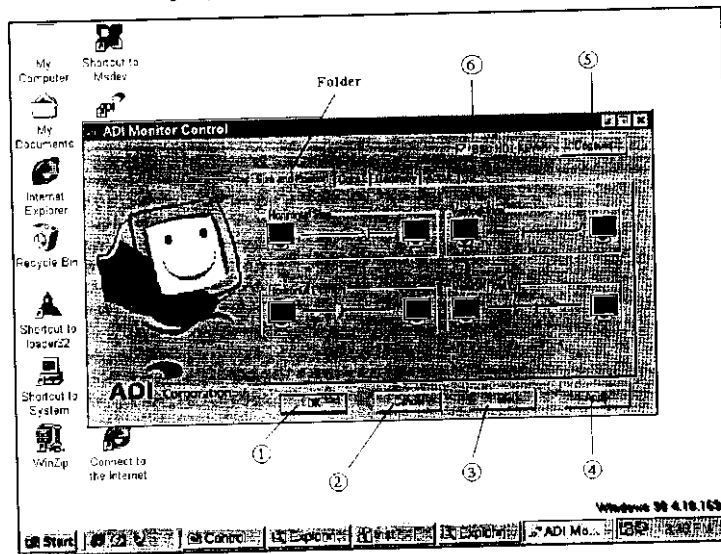


Step 7: You will be asked to restart your computer. Click **Yes** to restart your PC. If you click on **No**, monitor control function will not work until you restart the system.





Operating Your Monitor with USB Hot Key.

Double click on icon  located at the lower right-hand corner of your monitor screen to display monitor on-screen control.



- | | | |
|---|--------|--|
| ① | OK | Saves adjustments and quit the OSD menu. |
| ② | Cancel | Cancel the setting and leave the OSD menu. |

③	Reset	Resets the monitor controls to default or factory settings. <i>Notes: Reset does not apply to Color controls.</i>
④	Apply	Saves adjustments and apply to the monitor screen.
⑤	Degauss	Demagnetizes the monitor and corrects color impurity caused by external magnetic field.
⑥	OSD HOT KEY	If OSD HOT KEY is ticked and  is pressed, software OSD will be present. Otherwise, monitor hardware OSD will showed up.

Notes: You may click  located at the upper right-hand corner to close the OSD menu without any adjustment.

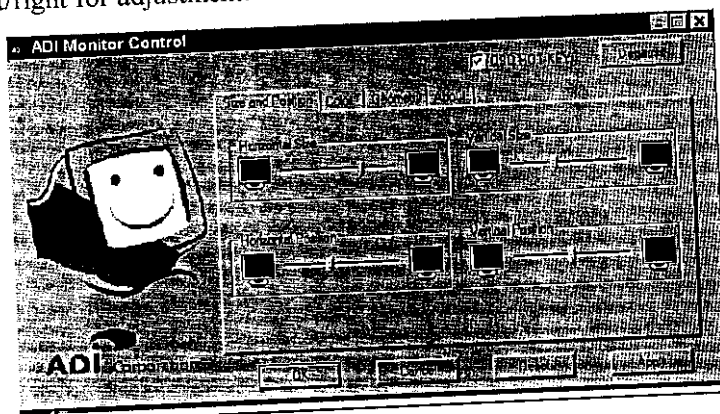
Inside Folder Layers

The parameters in the folder layers are similar to those in the monitor hardware OSD. You will find menu folders of Size and Position, Color (available only in MicroScan 4P) and Geometry.

Size and Position

The menu folder of Size and Position includes parameters of Horizontal Size, Horizontal Position, Vertical Size and Vertical Position.

Click on any one of the parameters, and use left/right arrow keys on your keyboard to adjust. You may also drag the cursor of a parameter toward left/right for adjustment.

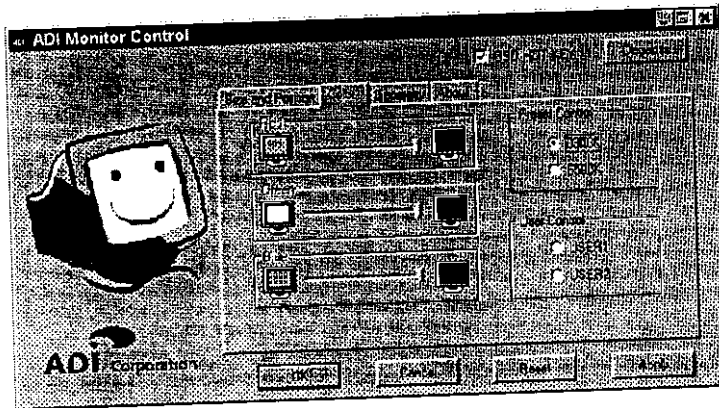


Color

The menu folder of Color is only available in MicroScan 4P.

Click on any one of the parameters, and use left/right arrow keys on your keyboard to adjust. You may also drag the cursor of a parameter toward left/right for adjustment.

Color menu has two options of Preset Control and User Control. You may choose color temperatures between 9300K and 6500K within Preset Control or create your own color preference saved as User 1/ User 2.

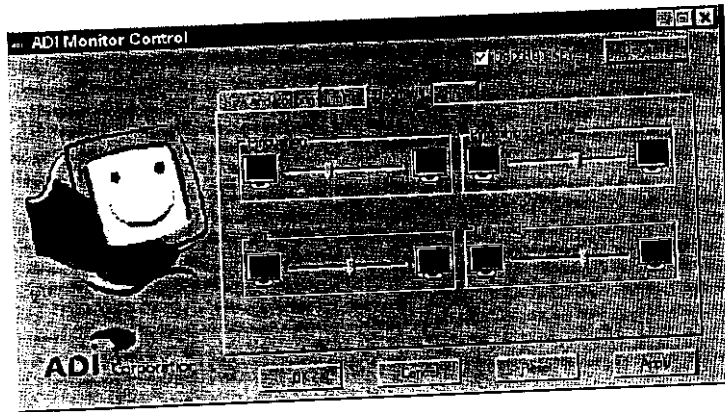


Notes: You may not choose Preset Control and User Control at the same time. If any of the two preset controls is selected, you cannot adjust RGB by dragging the cursor. To adjust RGB columns, you should select User 1/User 2.

Geometry

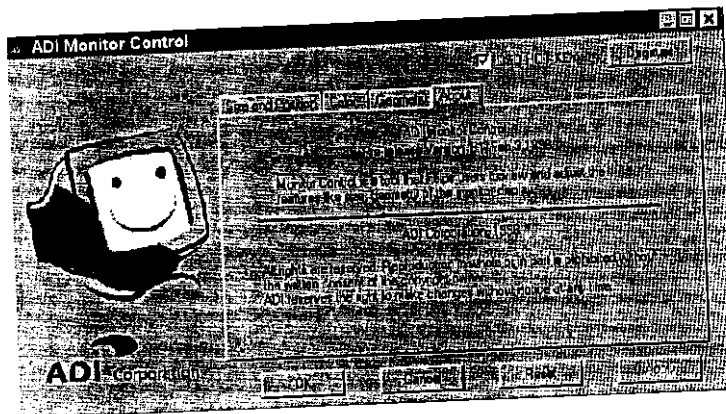
The menu folder of Geometry includes parameters of Pincushion, Trapezoid, Tilt and Pincushion Balance (available only in MicroScan 4P).

Click on any one of the parameters with your mouse, and use left/right arrow keys on your keyboard to adjust. You may also drag the cursor of a parameter toward left/right for adjustment.



About

This is the statement of ADI monitor control.



NOTICE:
DUE TO OUR POLICY OF CONTINUOUS PRODUCT IMPROVEMENT, THE ABOVE SPECIFICATIONS ARE SUBJECTED TO CHANGE WITHOUT NOTICE. ADI CORPORATION SHALL NOT BE LIABLE FOR TECHNICAL OR EDITORIAL ERRORS OR OMISSIONS CONTAINED HEREIN; NOR FOR INCIDENTAL OR CONSEQUENTIAL DAMAGES WHATSOEVER RESULTING FROM FURNISHING, PERFORMANCE OR USE OF THIS MATERIAL.