



COM-PT

Installation Guide

ADLINK TECHNOLOGY INC.

1. Hardware Installation

1.1 COM-PT Interface and Placement

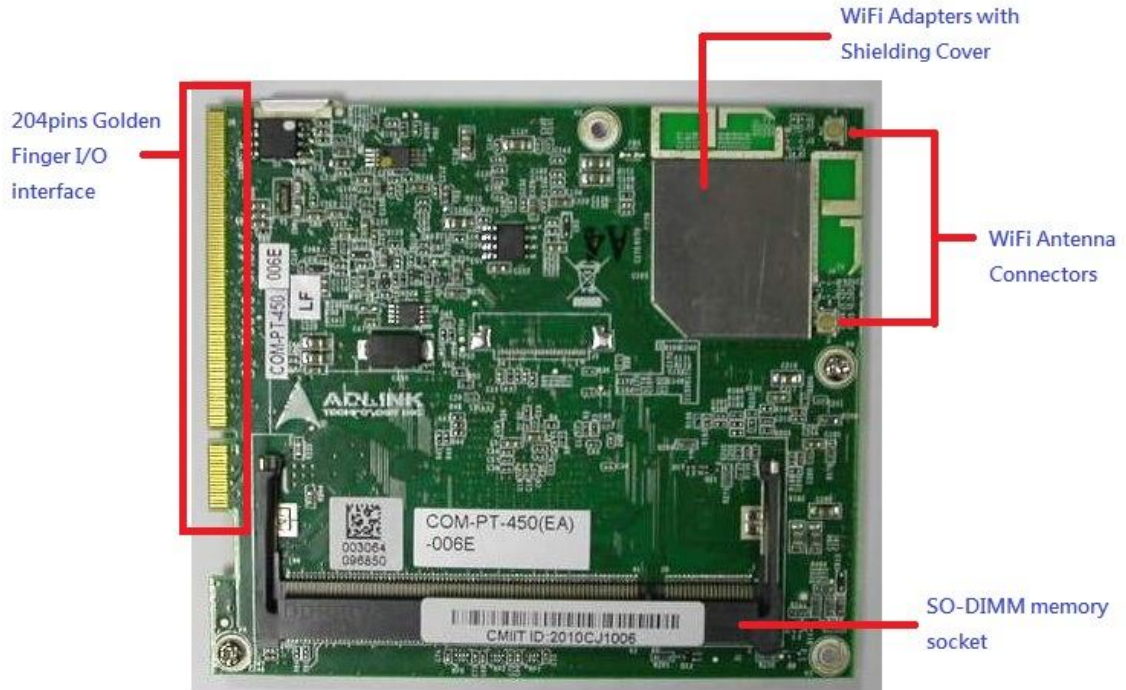


Figure 1-1 COM-PT Front View

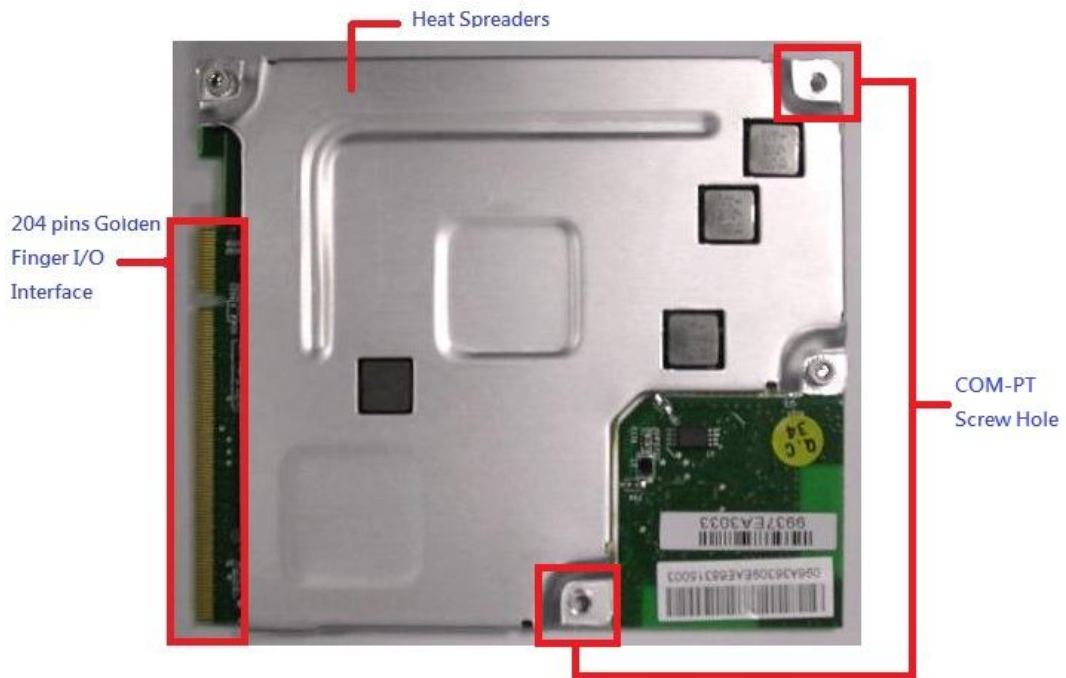


Figure 1-2 COM-PT Rear View

1.2 COM-PT Installation

The COM-PT is a SOM (System on Module), which can be combined design with any industrial or consumer products as well as general purpose system or devices goods.

The carrier board for COM-PT is depends on the customer application requirement. The standard interface between COM-PT and customer's carrier board are using FOXCONN AS0B946-S50U-7H connector for I/O communication and functionality implements.

Below are the roughly procedures for COM-PT install into the customer's carrier board.



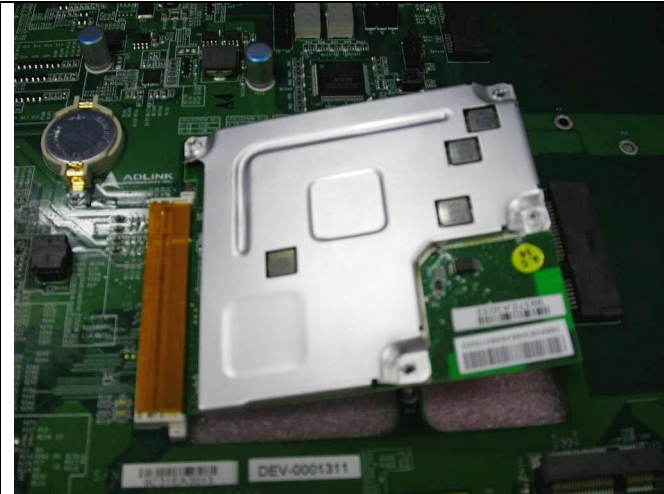
Step1

Using 25 degrees angle to insert DDR2 SO-DIMM memory into the SO-DIMM socket.



Step2

Pressed DDR2 memory until it completed locked into the SO-DIMM socket.



Step3

Using 25 degrees angle to insert COM-PT into FOXCONN AS0B946-S50U-7H connector.



Step4

Fasten the screw in position



Step5

Fasten the screw in position



Step 6
COM-PT hardware installation
completed

2. Software Installation

The COM-PT is using Intel wireless WiFi adaptors technology. Therefore COM-PT will require same driver and wireless WiFi connection utility as Intel® WiFi Link 1000. For COM-PT detail driver installation and the utility operation, please refer '**Intel(R) PROSet/Wireless WiFi Connection Utility User's Guide**'.

RF warning statement:

The device has been evaluated to meet general RF exposure requirement. The device can be used in portable exposure condition without restriction.

FCC STATEMENT

1. This device complies with Part 15 of the FCC Rules.

Operation is subject to the following two conditions:

(1) This device may not cause harmful interference.

(2) This device must accept any interference received, including interference that may cause undesired operation.

2. Changes or modifications not expressly approved by the party responsible for compliance could void the user's authority to operate the equipment.

NOTE: This equipment has been tested and found to comply with the limits for a Class B digital device, pursuant to Part 15 of the FCC Rules. These limits are designed to provide reasonable protection against harmful interference in a residential installation.

This equipment generates uses and can radiate radio frequency energy and, if not installed and used in accordance with the instructions, may cause harmful interference to radio communications. However, there is no guarantee that interference will not occur in a particular installation.

If this equipment does cause harmful interference to radio or television reception, which can be determined by turning the equipment off and on, the user is encouraged to try to correct the interference by one or more of the following measures:

- Reorient or relocate the receiving antenna.
- Increase the separation between the equipment and receiver.
- Connect the equipment into an outlet on a circuit different from that to which the receiver is connected.
- Consult the dealer or an experienced radio/TV technician for help.