



# **TRACER 4208 System Manual**

**12804208L1A      TRACER 4208 System (Plan A)**  
**12804208L1B      TRACER 4208 System (Plan B)**

## Trademarks

Any brand names and product names included in this manual are trademarks, registered trademarks, or trade names of their respective holders.

## To the Holder of the Manual

The contents of this manual are current as of the date of publication. ADTRAN reserves the right to change the contents without prior notice.

In no event will ADTRAN be liable for any special, incidental, or consequential damages or for commercial losses even if ADTRAN has been advised thereof as a result of issue of this publication.

## About this Manual

This manual provides a complete description of the TRACER 4208 system and system software. The purpose of this manual is to provide the technician, system administrator, and manager with general and specific information related to the planning, installation, operation, and maintenance of the TRACER 4208. This manual is arranged so that needed information can be quickly and easily found.



901 Explorer Boulevard  
P.O. Box 140000  
Huntsville, AL 35814-4000  
Phone: (256) 963-8000

© 2003 ADTRAN, Inc.  
All Rights Reserved.  
Printed in U.S.A.

## Revision History

| Document Revision | Date       | Description of Changes     |
|-------------------|------------|----------------------------|
| A                 | March 2003 | Initial release of manual. |



*Notes provide additional useful information.*



*Cautions signify information that could prevent service interruption.*



*Warnings provide information that could prevent damage to the equipment or endangerment to human life.*

**Safety Instructions**

When using your telephone equipment, please follow these basic safety precautions to reduce the risk of fire, electrical shock, or personal injury:

1. Do not use this product near water, such as a bathtub, wash bowl, kitchen sink, laundry tub, in a wet basement, or near a swimming pool.
2. Avoid using a telephone (other than a cordless-type) during an electrical storm. There is a remote risk of shock from lightning.
3. Do not use the telephone to report a gas leak in the vicinity of the leak.
4. Use only the power cord, power supply, and/or batteries indicated in the manual. Do not dispose of batteries in a fire. They may explode. Check with local codes for special disposal instructions.

**Save These Important Safety Instructions**

## FCC-Required Information

### Federal Communications Commission Radio Frequency Interference Statement

This equipment has been tested and found to comply with the limits for a Class A digital device, pursuant to Part 15 of the FCC Rules. These limits are designed to provide reasonable protection against harmful interference when the equipment is operated in a commercial environment. This equipment generates, uses, and can radiate radio frequency energy and, if not installed and used in accordance with the instruction manual, may cause harmful interference to radio frequencies. Operation of this equipment in a residential area is likely to cause harmful interference in which case the user will be required to correct the interference at his own expense.

 **NOTE**

*Shielded cables must be used with this unit to ensure compliance with Class A FCC limits.*

 **WARNING**

*Changes or modifications to this unit not expressly approved by the party responsible for compliance could void the user's authority to operate the equipment.*

### Radio Frequency Interface Statement

This equipment has been tested and found to comply with the limits for an intentional radiator, pursuant to Part 15, Subpart C of the FCC Rules. This equipment generates, uses, and can radiate radio frequency energy. If not installed and used in accordance with the instructions, it may cause interference to radio communications.

The limits are designed to provide reasonable protection against such interference in a residential situation. However, there is no guarantee that interference will not occur in a particular installation. If this equipment does cause interference to radio or television reception, which can be determined by turning the equipment on and off, the user is encouraged to try to correct the interference by one or more of the following measures:

- Reorient or relocate the receiving antenna of the affected radio or television.
- Increase the separation between the equipment and the affected receiver.
- Connect the equipment and the affected receiver to power outlets on separate circuits.
- Consult the dealer or an experienced radio/TV technician for help.

 **WARNING**

*Changes or modifications not expressly approved by ADTRAN could void the user's authority to operate the equipment.*

### FCC Output Power Restrictions

The FCC does not require licensing to implement this device. License-free operation in the industrial, scientific, and medical band is documented in FCC Rules Part 15.247. It is the responsibility of the individuals designing and implementing the radio system to assure compliance with any pertinent FCC Rules and Regulations. **This device must be professionally installed.**

### Exposure to Radio Frequency Fields

The TRACER 4208 is designed to operate at 5.8 GHz with 100 mW maximum transmit power.

This level of RF energy is below the Maximum Permissible Exposure (MPE) levels specified in FCC OET 65:97-01. The installation of high gain antenna equipment in the system configuration may create the opportunity for exposure to levels higher than recommended for the general population at a distance less than 15 feet (4.6 meter) from the center of the antenna. **The following precautions must be taken during installation of this equipment:**

- The installed antenna must not be located in a manner that allows exposure of the general population to the direct beam path of the antenna at a distance less than 15 feet (4.6 meters). Installation on towers, masts, or rooftops not accessible to the general population is recommended; or
- Mount the antenna in a manner that prevents any personnel from entering the area within 15 feet (4.6 meter) from the front of the antenna.
- It is recommended that the installer place radio frequency hazard warnings signs on the barrier that prevents access to the antenna.
- Prior to installing the antenna to the TRACER 4208 output, make sure the power is adjusted to the settings specified in section 2 of this manual.
- During antenna installation, be sure that power to the TRACER equipment is turned off in order to prevent any energy presence on the coaxial connector.
- During installation and alignment of the antenna, do not stand in front of the antenna assembly.
- During installation and alignment of the antenna, do not handle or touch the front of the antenna.

These simple precautions must be taken to prevent general population and installation personnel from exposure to RF energy in excess of specified MPE levels.

## Warranty and Customer Service

ADTRAN will replace or repair this product within the warranty period if it does not meet its published specifications or fails while in service. Warranty information can be found at [www.adtran.com/warranty](http://www.adtran.com/warranty).

## Customer Service, Product Support Information, and Training

ADTRAN will replace or repair this product within the warranty period if it does not meet its published specifications or fails while in service. Warranty information can be found at [www.adtran.com/warranty](http://www.adtran.com/warranty).

A return material authorization (RMA) is required prior to returning equipment to ADTRAN. For service, RMA requests, training, or more information, use the contact information given below.

### Repair and Return

If you determine that a repair is needed, please contact our Customer and Product Service (CaPS) department to have an RMA number issued. CaPS should also be contacted to obtain information regarding equipment currently in house or possible fees associated with repair.

CaPS Department           (256) 963-8722

Identify the RMA number clearly on the package (below address), and return to the following address:

ADTRAN Customer and Product Service  
901 Explorer Blvd. (East Tower)  
Huntsville, Alabama 35806

RMA # \_\_\_\_\_

### Pre-Sales Inquiries and Applications Support

Your reseller should serve as the first point of contact for support. If additional pre-sales support is needed, the ADTRAN Support web site provides a variety of support services such as a searchable knowledge base, latest product documentation, application briefs, case studies, and a link to submit a question to an Applications Engineer. All of this, and more, is available at:

<http://support.adtran.com>

When needed, further pre-sales assistance is available by calling our Applications Engineering Department.

Applications Engineering   (800) 615-1176

**Post-Sale Support**

Your reseller should serve as the first point of contact for support. If additional support is needed, the ADTRAN Support web site provides a variety of support services such as a searchable knowledge base, updated firmware releases, latest product documentation, service request ticket generation and trouble-shooting tools. All of this, and more, is available at:

<http://support.adtran.com>

When needed, further post-sales assistance is available by calling our Technical Support Center. Please have your unit serial number available when you call.

Technical Support (888) 4ADTRAN

**Installation and Maintenance Support**

The ADTRAN Custom Extended Services (ACES) program offers multiple types and levels of installation and maintenance services which allow you to choose the kind of assistance you need. This support is available at:

<http://www.adtran.com/aces>

For questions, call the ACES Help Desk.

ACES Help Desk (888) 874-ACES (2237)

**Training**

The Enterprise Network (EN) Technical Training Department offers training on our most popular products. These courses include overviews on product features and functions while covering applications of ADTRAN's product lines. ADTRAN provides a variety of training options, including customized training and courses taught at our facilities or at your site. For more information about training, please contact your Territory Manager or the Enterprise Training Coordinator.

Training Phone (800) 615-1176, ext. 7500

Training Fax (256) 963-6700

Training Email [training@adtran.com](mailto:training@adtran.com)



# Table of Contents

|                  |  |           |
|------------------|--|-----------|
| <b>Section 1</b> | <b>System Description</b> . . . . .  | <b>11</b> |
|                  | This section of ADTRAN's TRACER 4208 System Manual is designed for use by network engineers, planners, and designers for overview information about the TRACER 4208. |           |
| <b>Section 2</b> | <b>Microwave Path Engineering Basics</b> . . . . .   | <b>13</b> |
|                  | Explains the basics of analyzing a wireless microwave link or path. The significant parameters are defined, and several recommendations are offered.                 |           |
| <b>Section 3</b> | <b>Engineering Guidelines</b> . . . . .  | <b>25</b> |
|                  | Provides information to assist network designers with incorporating the TRACER 4208 system into their networks.  |           |
| <b>Section 4</b> | <b>Network Turnup Procedure</b> . . . . .  | <b>35</b> |
|                  | Provides shipment contents list, grounding instructions, mounting options, and specifics of supplying power to the unit.   |           |
| <b>Section 5</b> | <b>User Interface Guide</b> . . . . .  | <b>41</b> |
|                  | Provides detailed descriptions of all menu options and configuration parameters available for the TRACER 4208.   |           |
| <b>Section 6</b> | <b>Troubleshooting Guide</b> . . . . .   | <b>55</b> |
|                  | Provides helpful information for troubleshooting common configuration problems for the TRACER 4208.  |           |



# SYSTEM DESCRIPTION

*This section of ADTRAN's TRACER 4208 System Manual is designed for use by network engineers, planners, and designers for overview information about the TRACER 4208.*

It contains general information and describes physical and operational concepts, network relationships, provisioning, testing, alarm status, and system monitoring. This section should be used in conjunction with Section 3, *Engineering Guidelines*, of the system manual.

## CONTENTS

|                                    |           |
|------------------------------------|-----------|
| <b>System Overview</b> .....       | <b>12</b> |
| <b>Features and Benefits</b> ..... | <b>12</b> |
| Configuration and Management ..... | 12        |
| Operational .....                  | 12        |

## 1. SYSTEM OVERVIEW

The ADTRAN TRACER® 4208 wireless system provides eight independent T1 circuits over a wireless link for up to 30 miles (line-of-sight path required). As authorized under Part 15.247 of the FCC Rules, the TRACER 4208 operates license-free in the 5.8 GHz Industrial, Scientific, and Medical (ISM) band. The ISM band requires no frequency coordination or licensing of end users.

For configuration and testing, the TRACER 4208 provides the capability to control the remote system through a separate maintenance channel. The TRACER 4208 has several built-in test capabilities including remote loopback. Complete configuration and performance data is available through menus accessed using a standard RS-232 terminal interface.

## 2. FEATURES AND BENEFITS

The following is a brief list of the TRACER 4208 features and benefits:

### Configuration and Management

- Easy to use VT100 control port (RS-232 interface) for configuration and monitoring
- Remote configuration over both ends of the wireless link, from each end of the link

### Operational

- Eight independent transparent T1 transmission paths, over digital microwave link
- No license required per FCC Rules Part 15.247
- Frequency: 5.725 to 5.850 GHz
- Point-to-point, up to 30 miles
- 1-U high unit for easy rack-mounting

# MICROWAVE PATH ENGINEERING BASICS

*Explains the basics of analyzing a wireless microwave link or path. The significant parameters are defined, and several recommendations are offered.*

## CONTENTS

|   |           |
|---|-----------|
| <b>Line-of-Site</b> .....                               | <b>15</b> |
| Terminology .....                                       | 15        |
| <b>Decibels</b> .....                                   | <b>15</b> |
| <b>Calculating the Fade Margin</b> .....                | <b>15</b> |
| <b>Receiver Power</b> .....                             | <b>16</b> |
| Antenna Gain .....                                      | 17        |
| Transmitted Power (PT).....                             | 17        |
| Carrier Wavelength (l).....                             | 18        |
| Path Distance (d) .....                                 | 18        |
| System Losses (L) .....                                 | 18        |
| Path Loss (LP) .....                                    | 19        |
| <b>Receiver Sensitivity</b> .....                       | <b>20</b> |
| <b>Antenna Information</b> .....                        | <b>20</b> |
| Antenna Alignment .....                                 | 20        |
| TRACER RSSI Test Points.....                            | 21        |
| Antenna Beam Patterns .....                             | 21        |
| Fresnel Zones, Earth Curvature, & Antenna Heights ..... | 21        |
| <b>Other Considerations</b> .....                       | <b>23</b> |
| Path Availability.....                                  | 23        |

## FIGURES

|  |    |
|--|----|
| Figure 1. Example Microwave Path with Parameters ..... | 17 |
| Figure 2. Typical Antenna Beam Pattern .....           | 21 |

## TABLES

|  |    |
|--|----|
| Table 1. Antenna Gain for Given Dish Diameters .....         | 17 |
| Table 2. Typical Coaxial Loss for Common Cable Types .....   | 19 |
| Table 3. Path Loss for Given Path Lengths .....              | 20 |
| Table 4. Minimum Antenna Height for Given Path Lengths ..... | 22 |



## 1. LINE-OF-SITE

The TRACER 4208 system is designed for operation in the license-free 5.725 GHz to 5.850 GHz industrial, scientific and medical (ISM) band. Radio wave propagation in this band exhibits microwave characteristics which are ideally suited for point-to-point, line-of-sight communications. Line-of-Sight requires that the transmitting antenna and receiving antenna are able to “see” each other, and that the straight-line path between the two antennas is free of obstructions, such as buildings, trees, mountains, and, in longer paths, even the curvature of the earth. In addition, for maximum signal strength the area around the visual line-of-sight where microwave signals reflect (Fresnel zone) must also be free of obstructions. Fresnel zones are discussed in more detail on page 21.

### Terminology

|                |  |
|----------------|--|
| Point-to-Point | Wireless communication from a single site to another individual site. Contrast with point-to-multipoint. |
| Line-of-Sight  | An unobstructed, direct path exists between the transmitting and the receiving antennas.                 |

## 2. DECIBELS

Understanding the decibel (dB) format is key when discussing microwave path engineering because the received signal power is often expressed in decibel format. In general, any quantity can be expressed in decibels. If the quantity  $x$  is a power level (in Watts), the decibel equivalent is defined as

$$x_{dB} = 10 \cdot \log_{10}(x) \quad (\text{dB})$$

If the quantity  $x$  is referenced to a milliwatt (mW), then the decibel-milliwatt (dBm) is used instead of a generic decibel.

$$x_{dBm} = 10 \cdot \log_{10}\left(\frac{x}{1mW}\right) \quad (\text{dBm})$$

Using the decibel format simplifies power calculations by reducing multiplication and division operations into addition and subtraction operations.

## 3. CALCULATING THE FADE MARGIN



*It is imperative to determine if the proposed microwave path is suitable (at a minimum) for ideal, nondistorted signals before attempting installation.*

The fade margin ( $F$ ) is a value indicating the amount of extra signal power available to the receiver to operate at a maximum bit error rate (BER). Fade margin is simply the difference between the available signal power at the receiver ( $P_R$ ) and the receiver sensitivity ( $P_{sens}$ ).

$$F = P_R - P_{sens} \quad (\text{dB})$$

Higher levels of fade margin indicate stronger protection against signal fading and a more reliable link. For most applications, 20 to 30 dB of fade margin should ensure a reliable link.

The following sections further discuss the necessary power calculations and their components.

#### 4. RECEIVER POWER

The viability of a particular microwave path is determined by the power of the transmitted microwave signal, the transmit and receive antenna gain, distance, and accumulated system losses (such as RF coaxial cable losses and path loss).

The equation relating received signal power to the other microwave parameters is

$$P_R = \frac{P_T G_T G_R \lambda^2}{(4\pi)^2 d^2 L} \quad (\text{Watts, W})$$

or (in decibel notation)

$$P_R = P_T + G_T + G_R - L - L_P \quad (\text{decibels referenced to a Watt, dBW})$$

where the variables in the equation are defined as

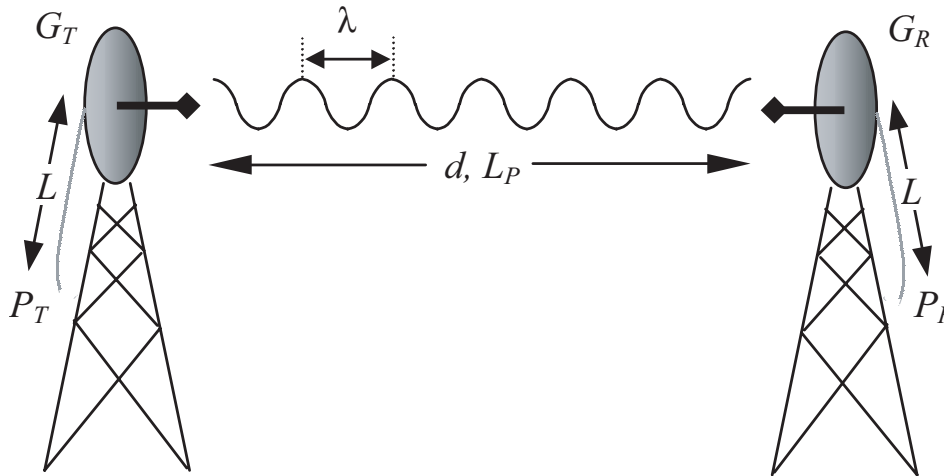
|           |   |
|-----------|---|
| $P_R$     | received power (Watts)  |
| $P_T$     | transmitted power (100 mW (max) for TRACER 4208 - adjustable) |
| $G_T$     | transmit antenna gain   |
| $G_R$     | receive antenna gain  |
| $\lambda$ | carrier wavelength (meters)                                   |
| $d$       | path distance (meters)  |
| $L$       | other losses (RF coaxial cable, etc.)                         |
| $L_P$     | path loss (dB)  |



*When using decibel notation, all quantities must be individually converted to decibels prior to performing addition and subtraction.*

Figure 1 on page 17 illustrates a wireless link configuration containing all the parameters necessary for the power budget analysis.





**Figure 1. Example Microwave Path with Parameters**

The following sections further discuss the power budget analysis and its components.

### Antenna Gain

Actual transmit and receive antenna gain values depend strictly upon the physical characteristics of the antennas installed for each link. In other words, the size of the dish determines the antenna gain. Using a parabolic dish antenna results in the best performance. Antenna gains are specified in terms of decibels of gain referenced to an isotropic source (dBi). An isotropic source is a hypothetical antenna having equal radiation in all directions. Typical antenna gains are listed in Table 1; however, dish manufacturers can provide gains for specific types of antennas.

**Table 1. Antenna Gain for Given Dish Diameters**

| Dish Diameter<br>(in feet) | Gain at 5.8 GHz<br>(in dBi) |
|----------------------------|-----------------------------|
| 2                          | 28.5                        |
| 4                          | 34.2                        |
| 6                          | 37.5                        |
| 8                          | 40.7                        |
| 10                         | 42.5                        |
| 12                         | 44.2                        |

### Transmitted Power ( $P_T$ )

The FCC specifies the maximum transmitter power used for antennae of a given gain. FCC Rules Part 15, Subpart 247 allow for a maximum power of 1 Watt (30 dBm) into antennae of a gain less than or equal to 6 dBi. Since the TRACER 4208 maximum transmit power is 100 milliwatts, there is no reduction in transmitter output power required for antennae gains greater than 6 dBi.

### Carrier Wavelength ( $\lambda$ )

The carrier wavelength is the physical wavelength of the main RF carrier being used for communication, and is usually approximated at the center frequency of the band (which is 5787.5 MHz for the TRACER 4208). The carrier wavelength calculations follow:

$$\lambda = c / f \text{ (meters)}$$

where

$c$  = speed of light (in meters)

$f$  = frequency (in Hz)

resulting in the following carrier wavelength:

$$\begin{aligned}\lambda &= 3.00 \times 10^8 / 5787.5 \times 10^5 \\ &= 0.0518 \text{ m or } 5.18 \text{ cm}\end{aligned}$$

### Path Distance ( $d$ )

The path distance is simply the physical distance between the transmit and receive antennas. For the TRACER 4208, these distances can range up to 30 miles.

### System Losses ( $L$ )

System losses are defined by RF coaxial cable loss, connector losses, and losses added from any additional lightning protection devices for the power budget analysis. Coaxial cable is required to attach the TRACER 4208 to the antenna. The length of the cable varies from a few feet to several feet, depending upon your application and the proximity of the TRACER 4208 to the antenna. Various grades of coaxial cable will work sufficiently well for connecting the TRACER 4208 unit to the antenna. A low-loss coaxial cable will minimize cable losses.

One end of the coaxial cable requires an N-type male connector (plug) to mate with the TRACER 4208 unit. The other end of the coaxial cable requires a connector compatible with the antenna chosen for the installation (usually an N-type male connector). Additionally, ADTRAN recommends that the outdoor connector on the coaxial cable be weatherproofed to prevent corrosion and electrical shorting.

#### **WARNING**

*In areas where lightning strikes are frequent, a lightning arrestor should be installed directly on the antenna coaxial cable. Installing lightning arrestors helps protect the RF electronics in the downstream path from damaging voltages and currents (including the TRACER 4208 unit).*

Table 2 gives typical loss figures for some of the more common coaxial cable types (per 100 feet).

**Table 2. Typical Coaxial Loss for Common Cable Types**

| Cable Type                   | 5.8 GHz Loss/100 ft.<br>(in dB) |
|------------------------------|---------------------------------|
| RG58                         | N/A                             |
| RG8 (air)                    | N/A                             |
| RG8 (foam)                   | N/A                             |
| 1/4" Coax                    | 11.36                           |
| 3/8" Coax                    | 9.65                            |
| 1/2" Coax                    | 6.49                            |
| 5/8" Coax                    | 4.90                            |
| 7/8" Coax                    | N/A                             |
| 1 1/4" Coax                  | N/A                             |
| 1 5/8" Coax                  | N/A                             |
| 5.8 GHz Elliptical Waveguide | 1.23                            |

### Path Loss ( $L_P$ )

Path loss is the estimated attenuation between the transmit and receive antennas caused by signal separation and scattering. The path loss is considered basic transmission loss over the microwave link. The following expression calculates path loss:

$$L_P = \left(\frac{4\pi d}{\lambda}\right)^2 = \left(\frac{4\pi d f}{c}\right)^2 \quad (\text{dB})$$

where

- $f$  carrier frequency (Hz)
- $\lambda$  carrier wavelength ( $c/f$ ) (meters)
- $d$  path distance (meters)
- $c$  speed of light, free-space (meters)

or

$$L_P = 96.6 + 20 \cdot \log_{10}(d) + 20 \cdot \log_{10}(f) \quad (\text{dB})$$

where  $d$  is expressed in miles and  $f$  in GHz

Path loss, as shown here, increases rapidly as either the path length increases or the carrier wavelength decreases (which happens as the carrier frequency increases). Therefore, longer microwave paths naturally experience more path loss than shorter paths. Likewise, higher frequency microwave communication experiences more path loss than lower frequency microwave communication.

Table 3 lists path loss values for various path lengths for the TRACER 4208 5.8 GHz system. Values not listed in the table can be interpolated from those listed.

**Table 3. Path Loss for Given Path Lengths**

| Path Length<br>(miles) | Path Loss<br>(dB) |
|------------------------|-------------------|
| 1                      | 112               |
| 2                      | 118               |
| 3                      | 121               |
| 4                      | 124               |
| 5                      | 126               |
| 10                     | 132               |
| 15                     | 135               |
| 20                     | 138               |
| 25                     | 140               |
| 30                     | 141               |
| 35                     | 143               |

## 5. RECEIVER SENSITIVITY

Receiver sensitivity is a value expressed in decibels referenced to one milliwatt (dBm) that corresponds to the minimum amount of signal power needed at the receiver to achieve a given bit error rate (BER). Receiver sensitivity is usually a negative number of decibels and smaller receiver sensitivity (higher quantity negative number) is better for a given BER. Several factors affect receiver sensitivity including the data bandwidth of the wireless link, and the amount of additional signal degradation introduced in the receiver electronics. The receiver sensitivity of the TRACER 4208 is -90 dBm at  $10^{-6}$  BER.



*Should an interferer be present nearby, three software selectable bandplans are provided for frequency agility. Changing the TRACER 4208 bandplan does not require additional components, or opening of the radio. See TRACER System Configuration > RF Bandplan on page 47 for additional details.*

## 6. ANTENNA INFORMATION

The overall wireless system is directly affected by the antenna selection and installation. The following sections discuss several factors concerning antenna selection and installation.

### Antenna Alignment

With line-of-sight microwave communications, optimum system performance requires that the transmitting and receiving antennas are properly aligned. This ensures maximum received signal power at each receiver. Antenna alignment must be achieved in both azimuth (along a horizontal plane) and elevation (along a vertical plane). A received signal strength indicator (RSSI) aids the equipment installer in determining when alignment is maximized by simply ensuring maximum RSSI.

## TRACER RSSI Test Points

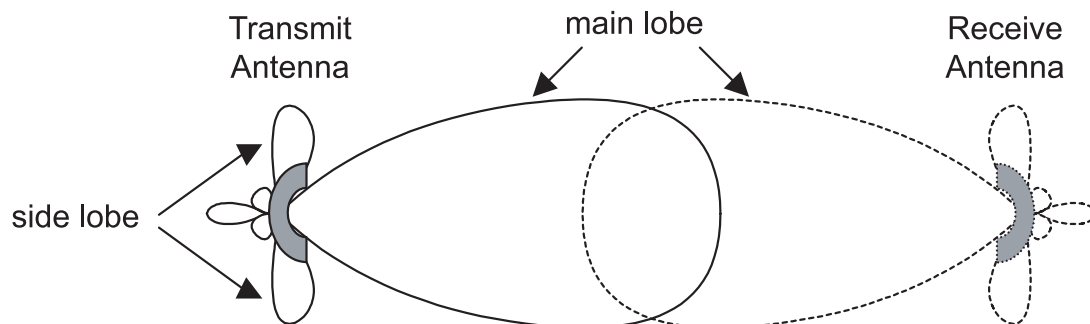
The RSSI indicator for the TRACER 4208 system is provided through the VT100 terminal menus accessed through the RS-232 interface, and it is presented as a series of bars indicating signal strength. More bars means more RSSI, which ensures more received signal strength and better link performance.

If the local system has acquired a useful signal from the remote system, then the remote TRACER 4208 RSSI can be viewed from the local TRACER 4208 VT100 terminal menu interface.

An RSSI test point, located on the front panel, represents the voltage (relative to the **GND** test point) of a relative signal level of receive strength from the far end. The voltage at this test point can vary from approximately 0 to greater than 4 Volts DC, with 0 Volts corresponding to no signal and 4 Volts or better to full signal strength.

## Antenna Beam Patterns

Directly related to the subject of antenna alignment is the topic of antenna beam patterns. Antennas used with the TRACER 4208 system have a particular beam shape determined in part by the physical construction and geometry of the antenna. The antenna beam patterns are characterized by a dominant main lobe, which is the preferred lobe to use for point-to-point communications, and several side lobes, as shown in Figure 1. When setting up a microwave link, antenna alignment is nothing more than steering the main lobes of both antennas until the main lobe of one transmitter is centered on the receiving element of the receiving antenna.



**Figure 2. Typical Antenna Beam Pattern**

Antennas are also designed to radiate RF energy efficiently for a specific range of frequencies. Please consult the data sheet for your particular antenna make and model to ensure that it is specified to operate in the 5725 MHz to 5850 MHz frequency band for the TRACER 4208 system.

## Fresnel Zones, Earth Curvature, & Antenna Heights

Fresnel zones correspond to regions in the microwave path where reflections of the intended signal occur and combine in both constructive and destructive manners with the main signal, thereby either enhancing or reducing the net power at the receiver.

In general, the odd numbered Fresnel zones (1, 3, 5, ...) add constructively at the receiver, while the even numbered Fresnel zones (2, 4, 6, ...) add destructively at the receiver.

The first Fresnel zone corresponds to the main lobe, 60% of which must be free of physical obstructions for the path calculations to be valid. Since the main lobe contains the vast majority of the microwave energy, this zone is typically used to determine proper antenna heights when placing antennas on towers or buildings.

The curvature of the Earth becomes a legitimate obstruction for path lengths of 7 miles or greater, and must also be accounted for when determining minimum antenna heights.

The aggregate expression for minimum antenna height that incorporates both the 60% first Fresnel zone and the Earth's curvature is given by

$$h = 72.1 \sqrt{\frac{d}{4f}} + 0.125d^2 \quad (\text{feet})$$

where  $f$  is in GHz and  $d$  is in miles.

Table 4 tabulates minimum antenna heights for given path lengths.

**Table 4. Minimum Antenna Height for Given Path Lengths**

| Path Length<br>(miles) | Min. Antenna Height<br>(ft) |
|------------------------|-----------------------------|
| 2                      | 22                          |
| 4                      | 32                          |
| 6                      | 41                          |
| 8                      | 50                          |
| 10                     | 60                          |
| 14                     | 81                          |
| 16                     | 92                          |
| 18                     | 104                         |
| 20                     | 117                         |
| 22                     | 131                         |
| 24                     | 145                         |
| 26                     | 161                         |
| 28                     | 177                         |
| 30                     | 194                         |
| 32                     | 213                         |
| 34                     | 232                         |
| 36                     | 252                         |

## 7. OTHER CONSIDERATIONS

### Path Availability

The path availability of a wireless link is a metric that expresses the fractional amount of time a link is available over some fixed amount of time, and depends on several factors. Path availability is expressed as

$$A = [1 - (2.5 \times 10^{-6})abfd^3(10^{-F/10})] \times 100\% \quad (\%)$$

where the parameters are

|          |                         |
|----------|-------------------------|
| <i>a</i> | terrain factor          |
| <i>b</i> | climate factor          |
| <i>f</i> | carrier frequency (GHz) |
| <i>d</i> | path length (miles)     |
| <i>F</i> | fade margin (dB)        |

### Terrain Factor (*a*)

The terrain factor is a quantity that compensates the link availability for different types of terrain. Generally speaking, the more smooth an area's terrain is, the less availability a wireless link running over that terrain will have, primarily due to multipath reflections. In contrast, secondary microwave signals will be randomly dispersed over rough terrain, and will not interfere with the main signal lobe as badly as in the smooth terrain case. The terrain factor values normally used are listed below:

| Terrain     | Terrain Factor | Description             |
|-------------|----------------|-------------------------|
| Smooth      | 4              | water, flat desert      |
| Average     | 1              | moderate roughness      |
| Mountainous | 1/4            | very rough, mountainous |

### Climate Factor (*b*)

The climate factor is a quantity that compensates the link availability for different types of climates (weather). In general, microwave links operating in areas with high humidity will have less availability than those in arid areas, primarily because water is a dispersive mechanism to microwave energy, and causes the main signal lobe to refract and disperse away from the receiver location. The climate factor values normally used are listed below:

| Climate   | Climate Factor | Description               |
|-----------|----------------|---------------------------|
| Very Dry  | 1/8            | desert regions            |
| Temperate | 1/4            | mainland, interior region |
| Humid     | 1/2            | humid and coastal regions |





# ENGINEERING GUIDELINES

*Provides information to assist network designers with incorporating the TRACER 4208 system into their networks.*

## CONTENTS

|  |           |
|--|-----------|
| <b>Equipment Dimensions</b> .....                        | <b>26</b> |
| <b>Power Requirements</b> .....                          | <b>26</b> |
| <b>Reviewing the Front Panel Design</b> .....            | <b>26</b> |
| RSSI Monitoring Interface .....                          | 26        |
| TX PWR Monitoring Interface .....                        | 26        |
| Front Panel LEDs .....                                   | 27        |
| <b>Reviewing the TRACER 4208 Rear Panel Design</b> ..... | <b>28</b> |
| RS-232 Connection (DB-25) — Terminal Use .....           | 28        |
| RS-232 Connection (Modem Use) .....                      | 30        |
| Test (1/4" bantam) .....                                 | 30        |
| T1 Connections (RJ-48C) .....                            | 31        |
| Alarm Contacts (Plug-In Terminal Block) .....            | 31        |
| DC Power Connection (Plug-In Terminal Block) .....       | 31        |
| Fuse .....   | 31        |
| Antenna Interface (N-Type connector) .....               | 32        |
| <b>At-A-Glance Specifications</b> .....                  | <b>32</b> |

## FIGURES

|  |    |
|--|----|
| Figure 1. TRACER 4208 Front Panel Layout ..... | 26 |
| Figure 2. TRACER 4208 Rear Panel .....         | 28 |

## TABLES

|  |    |
|--|----|
| Table 1. TRACER 4208 Front Panel Description .....                 | 27 |
| Table 2. TRACER 4208 LEDs .....                                    | 27 |
| Table 1. Rear Panel Description .....                              | 28 |
| Table 2. RS-232 Connection Pinout .....                            | 29 |
| Table 3. TRACER 4208 (DCE) to Terminal (DTE) Diagram (DB-25) ..... | 29 |
| Table 4. TRACER 4208 (DCE) to Personal Computer (DB-9) .....       | 29 |
| Table 5. TRACER 4208 (DCE) to Modem (DCE - DB-25) .....            | 30 |
| Table 6. T1 Interface Connector Pinout .....                       | 31 |
| Table 7. Alarm Contact Connector Pinout .....                      | 31 |
| Table 8. DC Power Connector Pinout .....                           | 31 |
| Table 9. At-A-Glance Specifications .....                          | 32 |

## 1. EQUIPMENT DIMENSIONS

The TRACER 4208 unit is 17.12" W, 10.80" D, and 1.72" H, weighs 7 lbs, and can be used in 19 or 23-inch rack-mount configurations.

## 2. POWER REQUIREMENTS

The TRACER 4208 system has a maximum power consumption of 18 W and a maximum current draw of 0.86 A (at 21 VDC).

## 3. REVIEWING THE FRONT PANEL DESIGN

The front panel contains **RSSI** and **TX PWR** monitoring interfaces, a **GND** interface for reference with the monitoring interfaces, and status LEDs to provide visual information about the TRACER 4208 system.

Figure 1 identifies the various bantam interfaces and the LEDs.

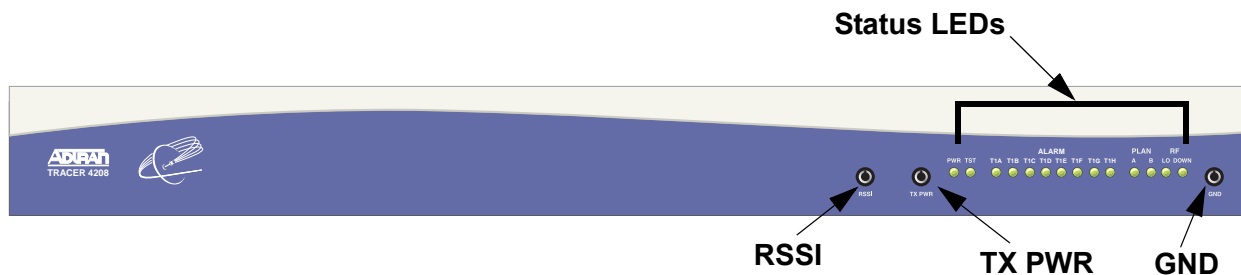


Figure 1. TRACER 4208 Front Panel Layout

### RSSI Monitoring Interface

The RSSI voltage is a function of the signal strength at the receiver and is used to measure the received signal strength. RSSI varies approximately from 0 to greater than 4 Volts (V), with 0V corresponding to a weaker received signal and 4V or better corresponding to a stronger received signal.



*The voltage level present at the **RSSI** test point represents only a relative signal level of receive strength from the far end. No direct correlation can be made between RSSI voltage levels and actual receive levels in dBm. This test point is provided to assess relative signal level for alignment of antennas.*

### TX PWR Monitoring Interface

The **TX PWR** voltage is a function of the selected transmit power level. This voltage ranges approximately from 0 to 5V, with 0V corresponding to +5 dBm (3 milliwatts) and 5V corresponding to +20 dBm (100 milliwatts).

## Front Panel LEDs

With the TRACER 4208 powered-on, the front panel LEDs provide visual information about the status of the TRACER 4208 system. Table 1 provides a brief description of the front panel features, and Table 2 provides detailed information about the LEDs.

**Table 1. TRACER 4208 Front Panel Description**

| Feature                 | Description  |
|-------------------------|--|
| <b>RSSI Interface</b>   | DC voltage indicating strength of the received signal at the antenna |
| <b>TX PWR Interface</b> | DC voltage indicating strength of transmitted signal                 |
| <b>GND Interface</b>    | Ground reference for <b>RSSI</b> and <b>TX PWR</b> interfaces        |
| <b>Status LEDs</b>      | Status information about the system                                  |

**Table 2. TRACER 4208 LEDs**

| For these LEDs... | This color light...                     | Indicates that...  |
|-------------------|---|--|
| <b>PWR</b>        | Green (solid)                           | the TRACER 4208 is connected to a power source.  |
|                   | Off                                     | the TRACER 4208 is not currently powered up.   |
| <b>PLAN A</b>     | Green (solid)                           | the TRACER 4208 is transmitting on Frequency Plan A.   |
|                   | Off                                     | the TRACER 4208 is not transmitting on Frequency Plan A.   |
| <b>PLAN B</b>     | Green (solid)                           | the TRACER 4208 is transmitting on Frequency Plan B.   |
|                   | Off                                     | the TRACER 4208 is not transmitting on Frequency Plan B.   |
| <b>RF DOWN</b>    | Red (solid)                             | there is a communication problem between the local and remote TRACER 4208 systems.                                     |
| <b>T1 Alarms</b>  | <b>T1A</b><br>.<br>.<br>.<br><b>T1H</b> | Red (solid)<br>an Alarm Condition on a T1 Interface. Check the respective T1 status page to identify the active alarm. |
|                   |   | Red (blinking)<br>the respective T1 is in a loopback mode.   |
| <b>RF LOW</b>     | Red (solid)                             | the RSSI level is below suggested minimum threshold (approximately 10 dBm above the minimum receive sensitivity).      |
| <b>TST</b>        | Amber (solid)                           | there is an active test being performed by the system or there is an active loopback.                                  |

#### 4. REVIEWING THE TRACER 4208 REAR PANEL DESIGN

Figure 2 identifies the various features of the TRACER 4208 rear panel and Table 1 provides a brief description of each interface.

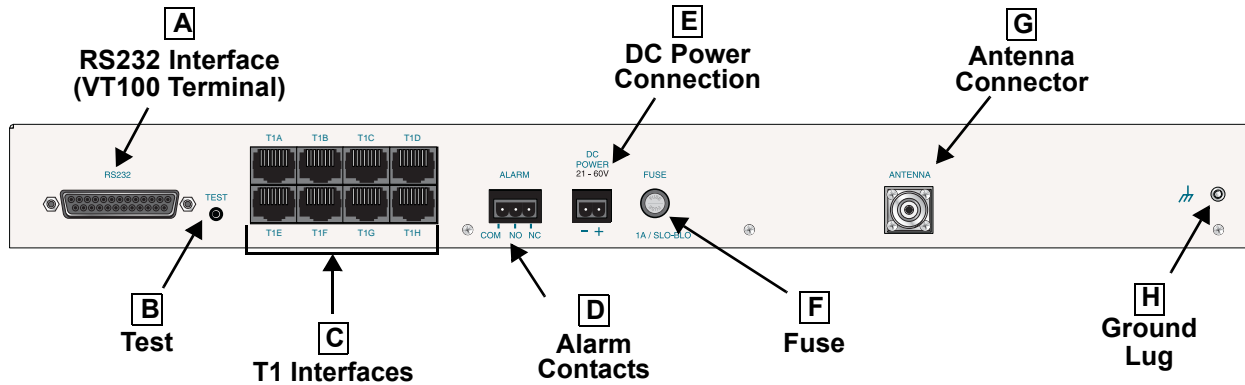


Figure 2. TRACER 4208 Rear Panel

Table 1. Rear Panel Description<sup>1</sup>

| Name                | Connector      | Description  |
|---------------------|----------------|--|
| <b>A</b> RS-232     | DB-25 (female) | VT100 terminal (or PC with terminal emulation software) connection |
| <b>B</b> Test       | 1/4" bantam    | Factory test connection  |
| <b>C</b> T1A - T1H  | RJ-48C         | T1 device connection   |
| <b>D</b> Alarm      | Terminal block | External alarm monitoring system connection                        |
| <b>E</b> DC Power   | Terminal block | 21-60 VDC power source connection                                  |
| <b>F</b> Fuse       | N/A            | 1 A, 250 V, 2 inch slow-blo fuse                                   |
| <b>G</b> Antenna    | N-Type         | Antenna feedline cable connection                                  |
| <b>H</b> Ground Lug | N/A            | Earth ground connection  |

<sup>1</sup> Detailed discussions (including pinouts) of rear panel components (where applicable) follow the table.

#### RS-232 Connection (DB-25) — Terminal Use

The **RS-232** connector provides a female DB-25 terminal connection (wired as a DCE interface), which is used for terminal access to the TRACER 4208 system. The **RS-232** port provides the following functions:

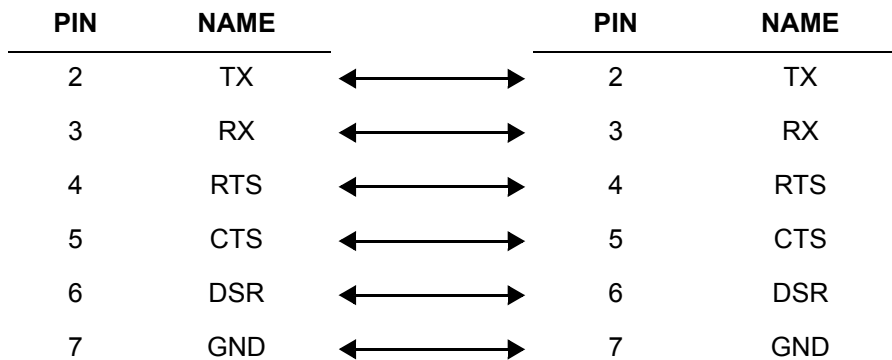
- Accepts EIA-232 input from a PC or terminal for controlling the TRACER 4208 system
- Operates at 9600 bps

Table 2 on page 29 shows the pinout. Wiring diagrams for connecting to the **RS-232** connector (for various applications) are provided following the pinout.

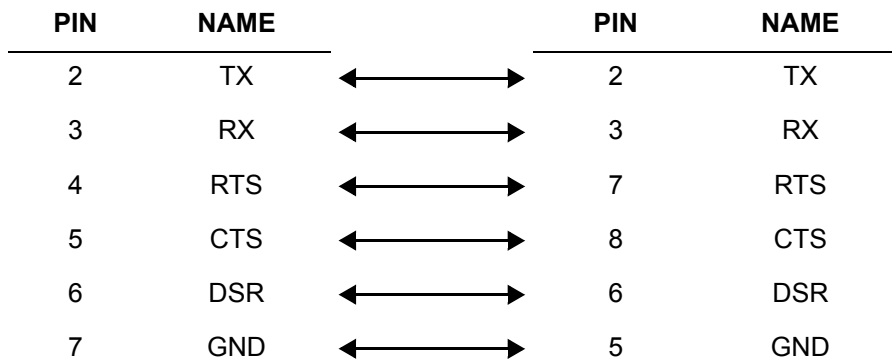
**Table 2. RS-232 Connection Pinout**

| <b>PIN</b> | <b>NAME</b> | <b>DESCRIPTION</b>                       |
|------------|-------------|--|
| 1, 7       | GND         | Ground                                   |
| 2          | TX          | Transmit                                 |
| 3          | RX          | Receive                                  |
| 4          | RTS         | Request To Send                          |
| 5          | CTS         | Clear To Send                            |
| 6          | DSR         | Data Set Ready (Modem Control Only)      |
| 8          | CD          | Carrier Detect                           |
| 9-19       | —           | Unused                                   |
| 20         | DTR         | Data Terminal Ready (Modem Control Only) |
| 21         | —           | Unused                                   |
| 22         | RI          | Ring Indicator                           |
| 23-25      | —           | Unused                                   |

**Table 3. TRACER 4208 (DCE) to Terminal (DTE) Diagram (DB-25)**



**Table 4. TRACER 4208 (DCE) to Personal Computer (DB-9)**



## RS-232 Connection (Modem Use)

Modem controls, discussed in Section 5, *User Interface Guide*, enable or disable modem control through the RS-232 interface. When this option is enabled from a standard terminal connection, all RS-232 communications cease until a modem with a null modem adapter is attached between the TRACER 4208 and the data modem. Configure the data modem for **AUTO ANSWER** and **9600 BPS**. When the user connects via the modem to the TRACER 4208 unit, communications via the RS-232 port resume. If a user accidentally enables modem control from a terminal and disrupts the RS-232 communication, pressing **<Ctrl + Z>** three times will temporarily disable the modem control option (until the system is reset) and will access the system configuration to disable modem control.

The TRACER 4208 must be interfaced to a modem via an RS-232 null modem adapter or cable. The null modem converts Clear To Send (CTS) and Data Set Ready (DSR) into Ready To Send (RTS) and Data Terminal Ready (DTR), respectively. These signals indicate (to most modems) that a valid DTE terminal device is present. The null modem interface must route Carrier Detect (CD) on pin 8 directly from the modem. When using the RS-232 interface for modem control, the modem must source CD only when actually connected to a carrier.

When **MODEM CONNECTION** is selected in the menu system, the TRACER 4208 will de-assert DTR and DSR for a time greater than 20 msec. The null modem consequently drops DTR and RTS at the modem interface, signaling the modem to hang up the line. If password functionality is enabled in the TRACER 4208, selecting **MODEM CONNECTION** resets the TRACER 4208 to the password entry screen.



*Hangup-on-DTR-drop may need to be explicitly enabled on some modems.*

Table 5 contains the wiring diagram needed for connecting the TRACER 4208 RS-232 interface to a modem using the null modem adapter.

**Table 5. TRACER 4208 (DCE) to Modem (DCE - DB-25)**

| PIN | NAME |   | PIN | NAME |
|-----|------|---|-----|------|
| 2   | TX   | ↔ | 3   | RX   |
| 3   | RX   | ↔ | 2   | TX   |
| 4   | RTS  | ↔ | 5   | CTS  |
| 5   | CTS  | ↔ | 4   | RTS  |
| 6   | DSR  | ↔ | 20  | DTR  |
| 7   | GND  | ↔ | 7   | GND  |
| 8   | CD   | ↔ | 8   | CD   |

## T1 Connections (RJ-48C)

The physical T1 interfaces are provided by eight RJ-48C jacks that comply with the applicable ANSI and AT&T® standards.

**Table 6. T1 Interface Connector Pinout**

| PIN    | NAME   | DESCRIPTION                              |
|--------|--------|--|
| 1      | R      | Transmit data (ring) towards the network |
| 2      | T      | Transmit data (tip) towards the network  |
| 3, 6-8 | UNUSED | —  |
| 4      | R1     | Receive data (ring) toward the network   |
| 5      | T1     | Transmit data (tip) from the network     |

## Alarm Contacts (Plug-In Terminal Block)

Normally open (**NO**) and normally closed (**NC**) alarm contacts are provided on the rear panel of the TRACER 4208 system. In normal operation, the **NC** contact is electrically connected to the common contact (**COM**) and the **NO** contact is isolated. During an alarm condition, the **NC** contact becomes isolated and the **NO** is electrically connected to **COM**. This allows alarm conditions to be reported to external alarm monitoring systems.

**Table 7. Alarm Contact Connector Pinout**

| PIN | NAME | DESCRIPTION             |
|-----|------|-------------------------|
| 1   | COM  | Common Contact          |
| 2   | NO   | Normally-Open Contact   |
| 3   | NC   | Normally-Closed Contact |

## DC Power Connection (Plug-In Terminal Block)

The TRACER 4208 can operate from a supply between 21 and 60 VDC, with either polarity referenced to ground, and consumes less than 18 Watts (W). Power supplies should be able to provide up to 25 W at the selected voltage. Current required (in Amps) is determined by dividing the power consumed (in Watts) by the applied voltage (in Volts). For example, at 48 V, TRACER 4208 would draw approximately 0.375 A (18 W/48 V).

**Table 8. DC Power Connector Pinout**

| PIN | NAME | DESCRIPTION                          |
|-----|------|--------------------------------------|
| 1   | +    | Positive Lead (referenced to ground) |
| 2   | -    | Negative Lead (referenced to ground) |

## Fuse

The fuse holder, accessible from the rear panel of the TRACER 4208, accepts a generic 1 A, 250 V, 2-inch slow-blo fuse.

### Antenna Interface (N-Type connector)

The **ANTENNA** interface (N-Type connector) connects to the customer-supplied antenna using standard antenna feedline cable. When determining the cable specifications for your application, refer to Section 2, *Microwave Path Engineering Basics (System Losses (L))* on page 18) for a discussion on cable length and loss factors.

## 5. AT-A-GLANCE SPECIFICATIONS

The following is a list of specifications for the TRACER 4208 system.

**Table 9. At-A-Glance Specifications**

| Hardware              | Description            | Specification                    |                            |
|-----------------------|------------------------|----------------------------------|----------------------------|
| <b>Transmitter</b>    |                        |                                  |                            |
|                       | Output Power           | +20 dBm, max                     |                            |
|                       | Frequency Range        | 5725 to 5850 MHz                 |                            |
| <b>Receiver</b>       |                        |                                  |                            |
|                       | Receive Level, Minimum | -86 dBm                          |                            |
|                       | Receive Level, Maximum | -30 dBm                          |                            |
|                       | Receive Level, Nominal | -55 dBm                          |                            |
| <b>Frequency Plan</b> |                        |                                  |                            |
|                       | Plan A                 | <b>Band Plan</b>                 |                            |
|                       |                        | 1                                | Tx 5.742 GHz, Rx 5.815 GHz |
|                       |                        | 2                                | Tx 5.747 GHz, Rx 5.827 GHz |
|                       | Plan B                 | <b>Band Plan</b>                 |                            |
|                       |                        | 1                                | Tx 5.815 GHz, Rx 5.742 GHz |
|                       |                        | 2                                | Tx 5.827 GHz, Rx 5.747 GHz |
|                       | Plan C                 | <b>Band Plan</b>                 |                            |
|                       |                        | 3                                | Tx 5.753 GHz, Rx 5.833 GHz |
|                       |                        | 3                                | Tx 5.833 GHz, Rx 5.753 GHz |
| <b>T1 Interface</b>   |                        |                                  |                            |
|                       | Capacity               | 1.544 Mbps (each)                |                            |
|                       | Connection             | RJ-48C jacks                     |                            |
|                       | Line Code              | B8ZS, AMI                        |                            |
|                       | Framing                | ESF, D4                          |                            |
|                       | Alarms                 | AIS, Red, Yellow, BPVs, LOS      |                            |
|                       | Loopbacks              | Local and remote (line and link) |                            |



**Table 9. At-A-Glance Specifications (Continued)**

| Hardware                            | Description           | Specification   |
|-------------------------------------|-----------------------|---|
| <b>User Interface</b>               |                       |   |
|                                     | Panel                 | Alarm LEDs  |
|                                     | Diagnostics           | Line and Link Loopbacks   |
|                                     | Test Points           | RSSI and TX PWR   |
|                                     | Alarms                | Normally Open (NO) and Normally Closed (NC)   |
|                                     | VT100 Terminal        | Menu Driven User Interface, Control of the Remote End, Loopback Test, Optional Password Protection, Event History |
| <b>VT100 Terminal Interface</b>     |                       |   |
|                                     | Data Rate             | 9600 bps  |
|                                     | Data Bits             | 8   |
|                                     | Parity                | None  |
|                                     | Stop Bits             | 1   |
|                                     | Terminal Emulation    | VT100   |
| <b>Mechanical and Environmental</b> |                       |   |
|                                     | Operating Temperature | -25° C to 65° C   |
|                                     | Size                  | 17.12" W x 10.80" D x 1.72" H   |
|                                     | Humidity              | 95%, Non-condensing   |
|                                     | Weight                | 7 lbs   |
| <b>Power</b>                        |                       |   |
|                                     | Input Voltage         | 21 to 60 VDC, either polarity referenced to ground  |
|                                     | Power Consumption     | ≤ 18 Watts  |
|                                     | Connector             | 2 pin terminal block (DC)   |
|                                     | Fuse                  | 1A, 250V slow-blo fuse (2-inch)   |



# NETWORK TURNUP PROCEDURE

*Provides shipment contents list, grounding instructions, mounting options, and specifics of supplying power to the unit.*

## CONTENTS

|  |           |
|--|-----------|
| <b>Introduction</b> .....                  | <b>36</b> |
| <b>Tools Required</b> .....                | <b>36</b> |
| <b>Unpack and Inspect the System</b> ..... | <b>36</b> |
| Contents of ADTRAN Shipment .....          | 36        |
| Customer Provides .....                    | 36        |
| <b>Channel Selection</b> .....             | <b>37</b> |
| <b>Grounding Instructions</b> .....        | <b>38</b> |
| <b>Supplying Power to the Unit</b> .....   | <b>39</b> |
| <b>Mounting Options</b> .....              | <b>39</b> |
| <b>Connecting the T1 Interface</b> .....   | <b>39</b> |

## FIGURES

|  |    |
|--|----|
| Figure 1. 5.8 GHz Bandwidth Division ..... | 37 |
|--|----|

## 1. INTRODUCTION

This section discusses the installation process of the TRACER 4208 system.

### **WARNING**

*Changes or modifications not expressly approved by ADTRAN could void the user's authority to operate the equipment.*

## 2. TOOLS REQUIRED

The tools required for the installation of the TRACER 4208 are:

- VT100 terminal or PC with terminal emulation software
- RS-232 (DB-25 male for TRACER 4208) cable for connecting to terminal



*To prevent electrical shock, do not install equipment in a wet location or during a lightning storm.*

## 3. UNPACK AND INSPECT THE SYSTEM

Each TRACER 4208 is shipped in its own cardboard shipping carton. Open each carton carefully and avoid deep penetration into the carton with sharp objects.

After unpacking the unit, inspect it for possible shipping damage. If the equipment has been damaged in transit, immediately file a claim with the carrier, then contact ADTRAN Customer Service (see *Customer Service, Product Support Information, and Training* information in the front of this manual).

### Contents of ADTRAN Shipment

Your ADTRAN shipment includes the following items:

- TRACER 4208 Unit
- TRACER 4208 Documentation CD
- Eight T1 Crossover (RJ-48 to RJ-48) Cables
- Eight T1 Straight Through (RJ-48 to RJ-48) Cables

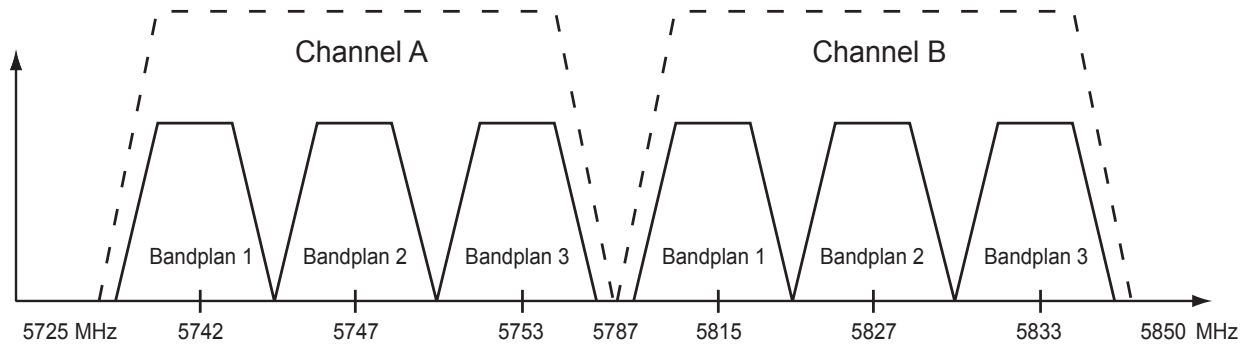
### Customer Provides

The following items are necessary for the installation of the TRACER 4208 system and are not provided by ADTRAN:

- 21 to 60 VDC power source (or AC adapter available from ADTRAN P/N 1280650L1), either polarity referenced to ground
- Antenna and mounting hardware
- Antenna feedline cable
- Lightning arrestors
- Weatherproofing kits for antenna installation

#### 4. CHANNEL SELECTION

The FCC has allocated 125 MHz of spectrum in the 5.8 GHz band where the TRACER 4208 operates. Figure 1 illustrates the bandwidth division.



**Figure 1. 5.8 GHz Bandwidth Division**

To designate the utilization of the ISM bandwidth, there are two different channel plans, labeled A and B. The letter of each channel plan setting is preset by the factory and refers to the physical configuration of the diplexer filter inside the environmental housing. Each channel is then divided into three bandplans (1, 2 or 3). The bandplans must be the same for the local and remote TRACER 4208. For example, the transmitter at one end of the link will transmit in bandplan 1 of channel A (the lower portion of the spectrum) and receive in bandplan 1 of channel B (the upper portion). Consequently, the receiver at the other end should receive in bandplan 1 of channel A (the lower portion) and transmit in bandplan 1 of channel B (the upper portion).

The letter of the channel plan (A or B) must be different on both ends and the number of the bandplan (1, 2, or 3) must be the same on both ends. The default bandplan configuration for the TRACER 4208 is bandplan 1.

The channel plan (A or B) of the unit may be changed in the field, if necessary, by rewiring the internal diplexer. Contact ADTRAN Technical Support for more information on this procedure.

## 5. GROUNDING INSTRUCTIONS

The following provides grounding instruction information from the Underwriters' Laboratory UL 60950 Standard for Safety of Information Technology Equipment Including Electrical Business Equipment, of December, 2000.

An equipment grounding conductor that is not smaller in size than the ungrounded branch-circuit supply conductors is to be installed as part of the circuit that supplies the product or system. Bare, covered, or insulated grounding conductors are acceptable. Individually covered or insulated equipment grounding conductors shall have a continuous outer finish that is either green, or green with one or more yellow stripes. The equipment grounding conductor is to be connected to ground at the service equipment.

The attachment-plug receptacles in the vicinity of the product or system are all to be of a grounding type, and the equipment grounding conductors serving these receptacles are to be connected to earth ground at the service equipment.

A supplementary equipment grounding conductor shall be installed between the product or system and ground that is in addition to the equipment grounding conductor in the power supply cord.

The supplementary equipment grounding conductor shall not be smaller in size than the ungrounded branch-circuit supply conductors. The supplementary equipment grounding conductor shall be connected to the product at the terminal provided, and shall be connected to ground in a manner that will retain the ground connection when the product is unplugged from the receptacle. The connection to ground of the supplementary equipment grounding conductor shall be in compliance with the rules for terminating bonding jumpers at Part K or Article 250 of the National Electrical Code, ANSI/NFPA 70. Termination of the supplementary equipment grounding conductor is permitted to be made to building steel, to a metal electrical raceway system, or to any grounded item that is permanently and reliably connected to the electrical service equipment ground.

The supplemental grounding conductor shall be connected to the equipment using a number 8 ring terminal and should be fastened to the grounding lug provided on the rear panel of the equipment. The ring terminal should be installed using the appropriate crimping tool (AMP P/N 59250 T-EAD Crimping Tool or equivalent.)



*The supplemental equipment grounding terminal is located on the rear panel of the TRACER 4208.*



- *This unit shall be installed in accordance with Article 400 and 364.8 of the NEC NFPA 70 when installed outside of a Restricted Access Location (i.e., central office, behind a locked door, service personnel only area).*
- *Power to the TRACER 4208 DC system must be from a reliably grounded 21-60 VDC source which is electrically isolated from the AC source.*
- *The branch circuit overcurrent protection shall be a fuse or circuit breaker rated minimum 60 VDC, maximum 10A.*
- *A readily accessible disconnect device that is suitably approved and rated shall be incorporated in the field wiring.*

## **6. SUPPLYING POWER TO THE UNIT**

The TRACER 4208 can operate from a supply between 21 and 60 VDC, with either polarity referenced to ground. Power supplies should be able to provide up to 25 watts at the selected voltage. A dual pin terminal plug accepts power at the rear panel of the unit, providing a + and - polarity reference point. Adapters for this plug are available (P/N 1175043L2) and are furnished with the unit and optional power supply (P/N 1280650L1).

## **7. MOUNTING OPTIONS**

Install the TRACER 4208 in a location that requires minimal antenna feedline length (the loss in this cable directly affects overall system performance). The TRACER 4208 is designed to be mounted in a rack. If multiple units are installed in one location, one half inch of spacing is recommended above and below the unit.

## **8. CONNECTING THE T1 INTERFACE**

The physical T1 interface is provided using eight RJ-48C jacks for transmit and receive. The provided straight through T1 interface cables can be used to interface to any standard T1 DTE device.





# USER INTERFACE GUIDE

*Provides detailed descriptions of all menu options and configuration parameters available for the TRACER 4208.*

This section of ADTRAN's TRACER 4208 System Manual is designed for use by network administrators and others who will configure and provision the system. It contains information about navigating the VT100 user interface, configuration information, and menu descriptions.

## CONTENTS

|   |           |
|---|-----------|
| <b>Navigating the Terminal Menu 62</b>        |           |
| Terminal Menu Window .....                    | 62        |
| Navigating using the Keyboard Keys .....      | 63        |
| <b>Terminal Menu and System Control .....</b> | <b>63</b> |
| Selecting the Appropriate Menu .....          | 63        |
| Security Levels .....                         | 63        |
| <b>Menu Descriptions .....</b>                | <b>63</b> |
| Menu 1 .....                                  | 64        |

## FIGURES

|   |     |
|---|-----|
| Figure 1. Top-Level Terminal Menu Window .....        | 64  |
| Figure 2. Alternate Menu View .....                   | 65  |
| Figure 3. System Info Menu .....                      | 70  |
| Figure 4. System Status Menu .....                    | 72  |
| Figure 5. System Config Menu .....                    | 79  |
| Figure 6. System Utility Menu .....                   | 92  |
| Figure 7. View Selftest Log .....                     | 97  |
| Figure 8. Modules Menu .....                          | 102 |
| Figure 9. T1/PRI Loopback Test Diagram .....          | 109 |
| Figure 10. E1/PRA Network Loopback Test Diagram ..... | 116 |
| Figure 11. T1/PRI Loopback Test Diagram .....         | 128 |
| Figure 12. T1/PRI Loopback Test Diagram .....         | 169 |
| Figure 13. HSSI Interface Loopback Test Diagram ..... | 171 |
| Figure 14. Packet Manager Menu .....                  | 190 |
| Figure 15. Router Menu (IP Selected) .....            | 218 |
| Figure 16. Dedicated Maps Menu .....                  | 233 |
| Figure 17. Circuit Status Menu .....                  | 250 |
| Figure 18. Dial Plan Menu .....                       | 253 |

## 1. NAVIGATING THE TERMINAL MENU

The TRACER 4208 menu system can be accessed with a VT100 compatible terminal that is connected to the RS-232 port located on the back of the unit and set to 9600 bits per second, 8 data bits, 1 stop bit, and no parity. Flow control on the serial interface should be configured to **NONE** for proper operation. Once a terminal is connected, press <Ctrl + L> to refresh the current screen. If password access has been enabled, the **ENTER PASSWORD** message displays at the bottom of the TRACER 4208 System Status menu.



*All TRACER 4208 systems are shipped factory default with password protection disabled.*

### Terminal Menu Window

The TRACER 4208 uses a series of menu pages and a single main menu page to access its many features. The main menu page (see Figure 1) provides a link to all available configuration/status pages.



*After connecting a VT100 terminal to the TRACER 4208, press <Ctrl + L> to redraw the current screen.*

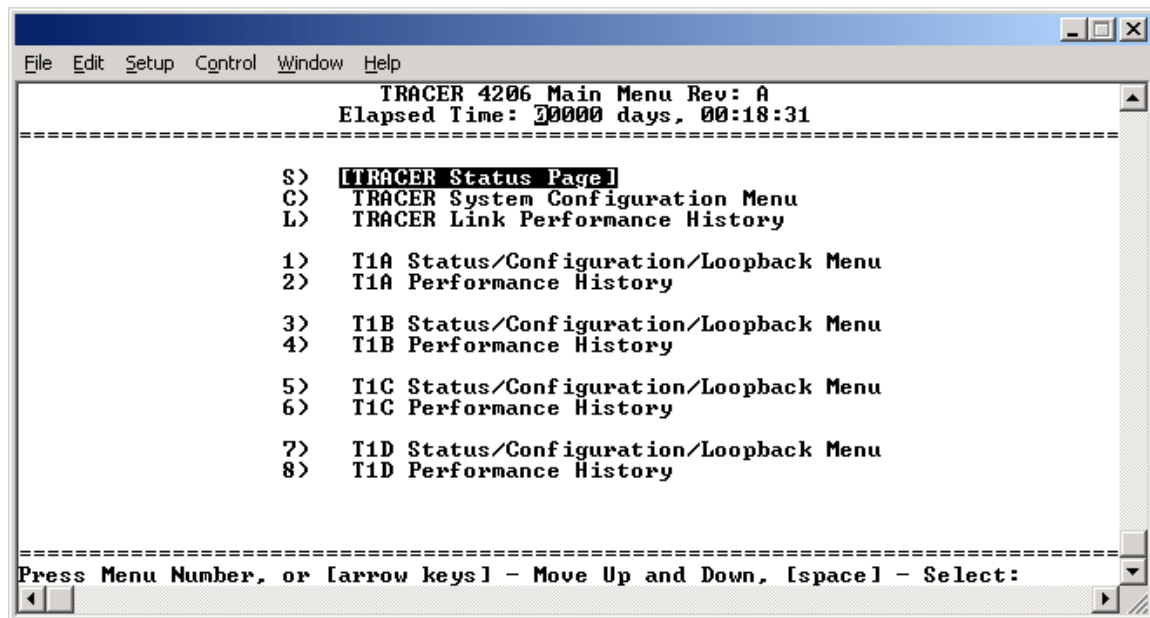


Figure 1. Main Menu Screen

## Navigating using the Keyboard Keys

You can use various keystrokes to move through the terminal menu, to manage a terminal menu session, and to configure the system.

### Moving Through the Menus

| To do this...  | Press this key...                                   |
|--|---|
| Move up to select items  | Up Arrow  |
| Move down to select items                                      | Down Arrow  |
| Edit a selected menu item                                      | Enter   |
| Scroll through configuration parameters for a menu item        | Spacebar<br>Left/Right Arrows<br>P or N (Prev/Next) |
| Cancel an edit   | Escape  |
| Return to Main Menu page                                       | M   |
| Access the TRACER 4208 Status page                             | S   |
| Access the System Configuration Menu                           | C   |
| Display the TRACER 4208 Link Performance History               | L   |
| Access the T1 (A through H) Status/Configuration/Loopback Menu | 1, 3, 5 ... 15                                      |
| Display the T1 (A through H) Performance History               | 2, 4, 6 ... 16                                      |

### Session Management Keystrokes

| To do this...   | Press this key... |
|---|-------------------|
| Log into a session  | Spacebar          |
| Refresh the screen<br>To save time, only the portion of the screen that has changed is refreshed. | <Ctrl + L>        |

## 2. TERMINAL MENU AND SYSTEM CONTROL

### Password Protection

The TRACER 4208 provides optional password protection of the terminal interface. If enabled, a password prompt is presented at power-up, reboot, modem logout, or after ten minutes of inactivity on the terminal. The password is enabled and defined via the system configuration menu.



*All TRACER 4208 systems are shipped factory default with password protection disabled.*

### 3. MENU DESCRIPTIONS

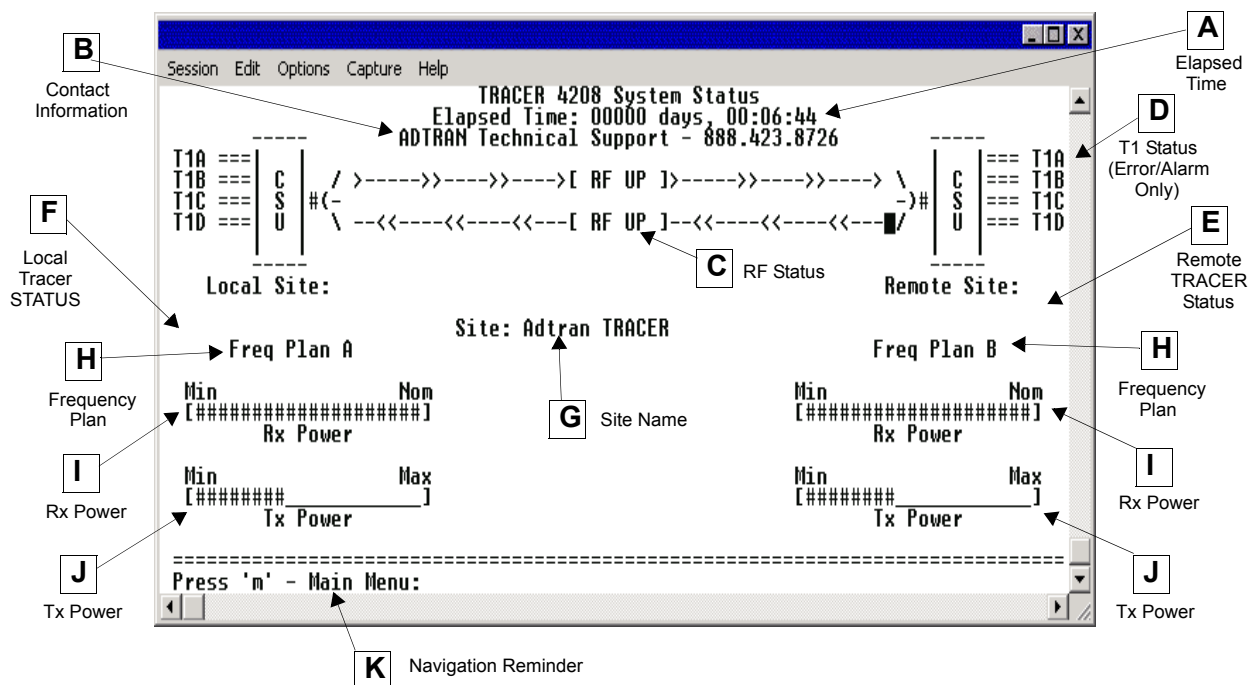
The remainder of this section describes the TRACER 4208 menus and submenus.

**NOTE** *The menu structure of the TRACER 4208 system is depicted below as follows:*

- > **MENU PAGE**
- > **MENU PAGE > MENU SELECTION**
- > **MENU PAGE > MENU SELECTION > SUB-MENU**

#### >TRACER SYSTEM STATUS

Figure 2 shows the TRACER 4208 System Status menu page. The status of major system components for both sides of the TRACER link are displayed, but no configuration can be performed from this view.



**Figure 2. TRACER 4208 System Status**

**A. Elapsed Time**

The top of the TRACER 4208 System Status menu page displays the elapsed time the TRACER 4208 system has been operational since the last power reset.

**B. Contact Information**

The ADTRAN technical Support toll-free contact number is located directly beneath the elapsed time display at the top of the TRACER 4208 System Status menu page.

**C. RF Status**

A graphical indicator of the TRACER RF links is located beneath the Technical Support contact number. The status of the received radio link is indicated as **RF UP** or **RF DOWN** for each direction. This RF status display corresponds to the **RF DOWN** LED on the front of the unit.

**D. T1 Status (Error/Alarm Only)**

A visual status of current errors/alarms on the T1 interfaces (for both the local and remote TRACER systems) is provided on the TRACER 4208 System Status menu page. **T1A** through **T1H** displayed in reverse highlight indicates an active error or alarm condition. Individual T1 status pages (accessible from the main menu) provide detailed T1 information.

**E. Remote TRACER Status**

The right portion of the TRACER 4208 System Status menu page reports the status of the remote TRACER 4208 (the system across the wireless link from the active terminal). If the RF link is down, **DATA NOT AVAILABLE** is displayed in place of the remote system status information.

**F. Local TRACER Status**

The left portion of the TRACER 4208 System Status menu page reports the status of the local TRACER 4208 (the system where the active terminal is attached).

**G. Site Name**

The **SITE NAME** field provides a user-defined alphanumeric description (up to 25 characters) for the TRACER 4208 system. This field is defined from the TRACER 4208 System Configuration menu page.

**H. Frequency Plan**

Displays the frequency plan (A or B) for the TRACER 4208 unit. For an operational TRACER 4208 system you should have one A and one B frequency plan.

**I. Rx Power**

Displays the approximate receiver levels (for both the local and remote units) using a series of symbols (**#**). The more symbols (**#**) displayed, the stronger the signal. If the link is down and remote end data is unavailable, **DATA NOT AVAILABLE** is displayed in place of the symbols (**#**).

**J. Tx Power**

Displays the approximate transmitter levels (for both the local and remote units) using a series of symbols (**#**). The more symbols (**#**) displayed, the stronger the signal. If the link is down and remote end data is unavailable, **DATA NOT AVAILABLE** is displayed in place of the symbols (**#**).

**K. Navigation Reminders**

Displays system navigation reminders. For more details on system navigation, refer to *Navigating the Terminal Menu* on page 42.

## >MAIN MENU

The TRACER 4208 Main Menu page provides access to all other configuration/status pages. Figure 3 shows the TRACER 4208 Main Menu page.

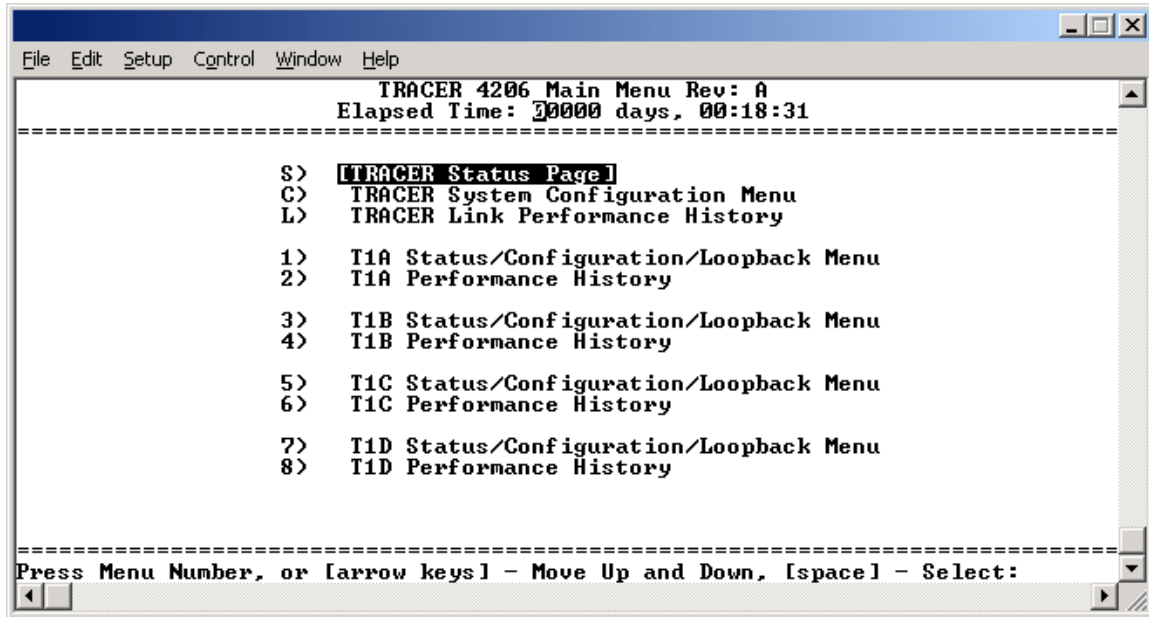


Figure 3. TRACER 4208 Main Menu

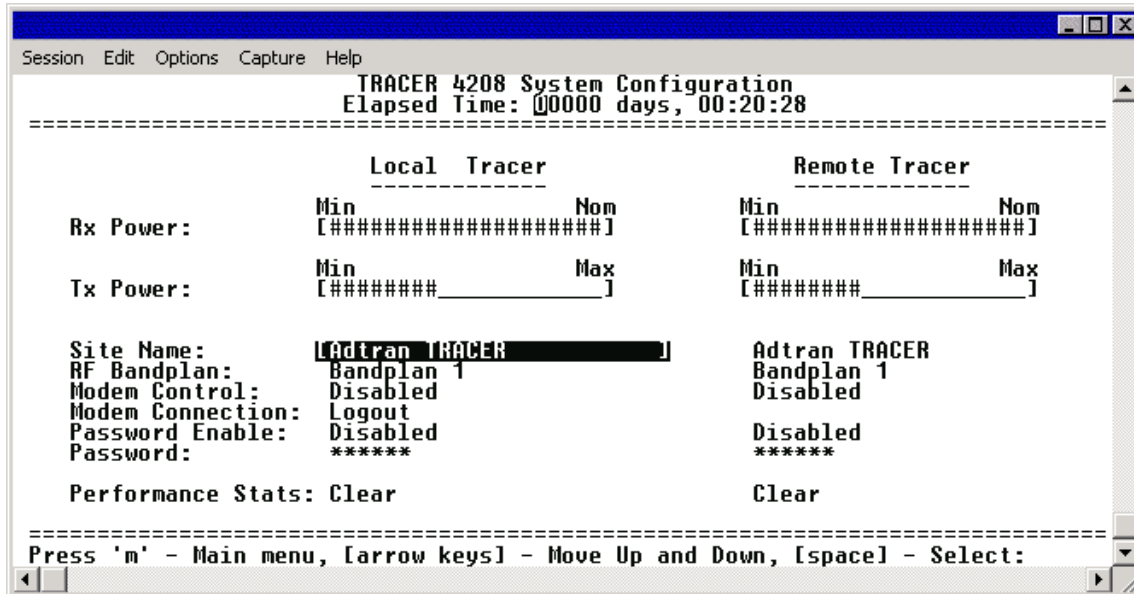
From the keyboard, use the up and down arrow keys to scroll through the available pages, or enter the number or letter of the selected page (to highlight the menu page) and press <Enter>.



*Press <m> from any menu in the TRACER 4208 VT100 menu structure to access the TRACER 4208 Main Menu page.*

**>TRACER SYSTEM CONFIGURATION**

Figure 4 shows the TRACER 4208 System Configuration menu page. System configuration parameters for both the local and remote TRACER 4208 units are available through this menu page.



**Figure 4. TRACER 4208 System Configuration**

**NOTE** *Press <C> from any menu in the TRACER 4208 VT100 menu structure to access the TRACER System Configuration menu page.*

**>TRACER SYSTEM CONFIGURATION > RX POWER**

Displays the approximate receiver levels (for both the local and remote units) using a series of symbols (#). The more symbols (#) displayed, the stronger the signal. If the link is down and remote end data is unavailable, **DATA NOT AVAILABLE** displays in place of the symbols (#). This parameter is display only.

**>TRACER SYSTEM CONFIGURATION > TX POWER**

Allows the transmitter levels (for both the local and remote units) to be adjusted. The current transmitter level is displayed using a series of symbols (#). The more symbols (#) displayed, the stronger the signal. If the link is down and remote end data is unavailable, **DATA NOT AVAILABLE** displays in place of the symbols (#).

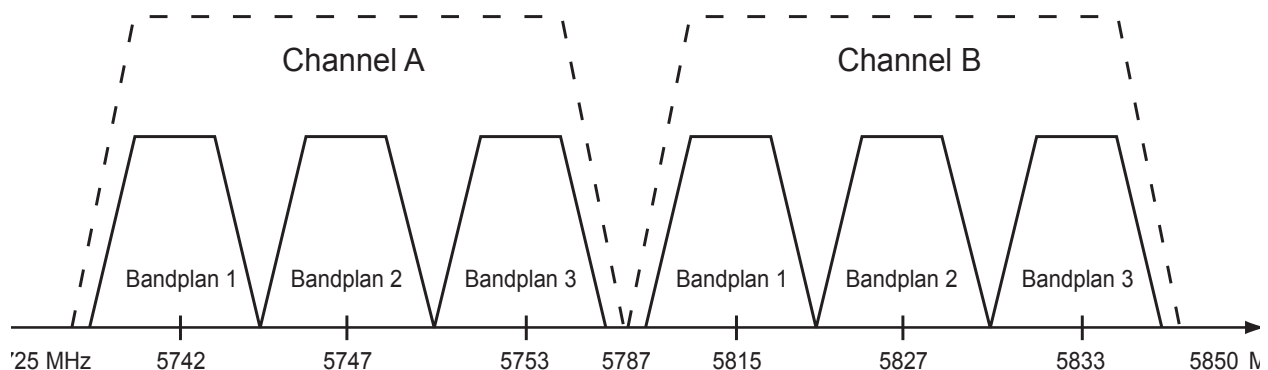
**CAUTION** *Reducing the transmitter power of the remote TRACER 4208 could negatively impact the TRACER RF link.*

**>TRACER SYSTEM CONFIGURATION > SITE NAME**

Provides a user-defined alphanumeric description (up to 25 characters) for the TRACER 4208 system.

**>TRACER SYSTEM CONFIGURATION > RF BANDPLAN**

Sets the bandplan for the TRACER 4208. Each channel is divided into three bandplans (1, 2, or 3). Both local and remote TRACER 4208 must be configured with the same bandplan (1, 2, or 3) but different channel plans (Plan A or Plan B). For example, the transmitter at one end of the link will transmit in bandplan 1 of channel A (the lower portion of the spectrum) and receive in bandplan 1 of channel B (the upper portion). Consequently, the receiver at the other end should receive in bandplan 1 of channel A (the lower portion) and transmit in bandplan 1 of channel B (the upper portion). (Refer to Figure 5). The TRACER 4208 comes factory programmed with RF bandplan set to Band 1.



**Figure 5. 5.8 GHz Bandwidth Division (TRACER 4208)**

**>TRACER SYSTEM CONFIGURATION > MODEM CONTROL**

Configures the modem control leads on the RS-232 port (terminal interface located on the rear panel of the unit). Set **MODEM CONTROL** to **ENABLED** when connecting the unit to a modem (using a null modem adapter). Setting **MODEM CONTROL** to **DISABLED** prevents the TRACER 4208 from monitoring DCD and enables data to be sent to the VT100 continuously. **MODEM CONTROL** must be set to **DISABLED** when the VT100 terminal is in use. The TRACER 4208 comes factory programmed with **MODEM CONTROL** set to **DISABLED**.



*Press <Ctrl+Z> three times from the terminal interface to disable **MODEM CONTROL** when the modem control leads are active.*

**>TRACER SYSTEM CONFIGURATION > MODEM CONNECTION (LOGOUT)**

Causes the TRACER 4208 to de-assert Clear To Send (CTS) and DSR for a time greater than 20 msec. This signals the modem to disconnect the analog connection. Hangup-On-DTR-Drop may need to be explicitly enabled on some modems. If **PASSWORD PROTECTION** is **ENABLED**, this menu also causes the unit to close the current session and return to the TRACER System Status menu page and wait for password input.



**>TRACER SYSTEM CONFIGURATION > PASSWORD ENABLE**

Configures password protection for the VT100 terminal interface. Password protection for the TRACER 4208 requires password input from the TRACER 4208 System Status menu page when connecting to the unit. When configured for password protection, the TRACER 4208 closes any terminal session that remains inactive for more than 10 minutes. The TRACER 4208 comes factory programmed with **PASSWORD ENABLE** set to **DISABLED**.

**>TRACER SYSTEM CONFIGURATION > PASSWORD**

Sets the password for password protection of the TRACER 4208 VT100 terminal interface. Enter up to 8 alphanumeric characters. The system password is case sensitive.

**NOTE** *The default password for the TRACER 4208 is **tracer**.*

**>TRACER SYSTEM CONFIGURATION > PERFORMANCE STATS (CLEAR)**

Resets all system error counters for the TRACER 4208.

**>TRACER LINK PERFORMANCE HISTORY**

Figure 6 shows the TRACER 4208 Link Performance History menu page, which displays detailed error statistics and received signal level for the RF link (from both the local and remote TRACER 4208 units) in 15-minute increments.

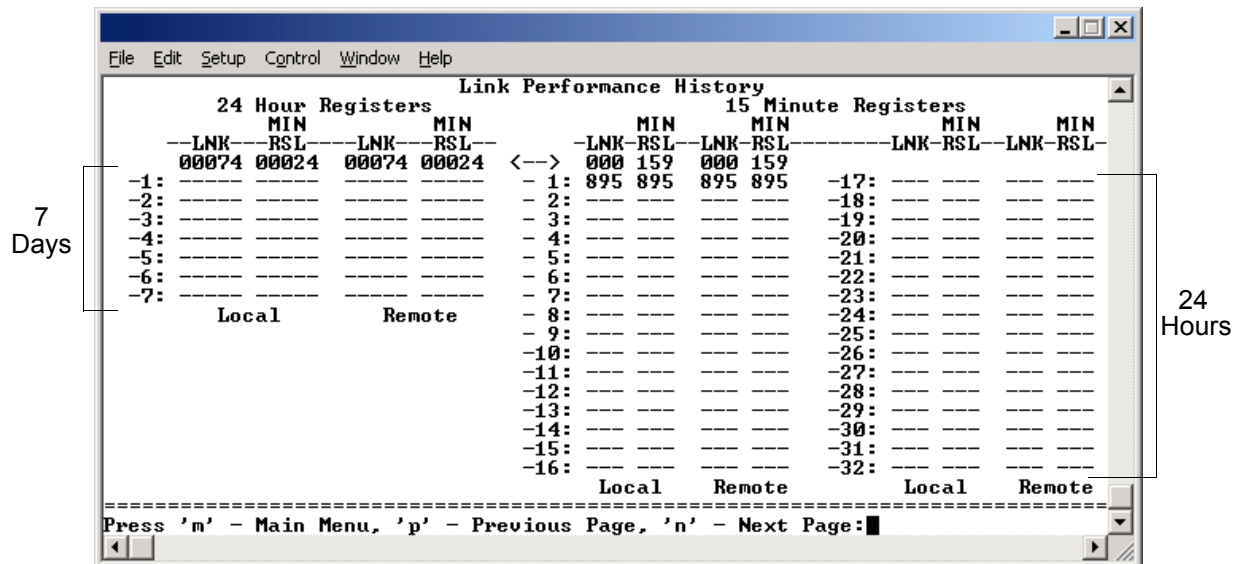


Figure 6. TRACER Link Performance History

The minimum received signal level (**MIN RSL**) is represented as a numerical value from 0 to 255 with 0 corresponding to no receive power and 255 corresponding to an extremely strong signal. The minimum received signal level is directly related to RSSI.

The error count and received signal level for the most recent 24 hours are recorded and displayed on the right side of the page. The left side of the page displays the 24 hour totals for the most recent 7 days.



Press <N> to view the next 8 hours worth of 15-minute totals and <P> to view the previous 8 hours.



Press <L> from any menu in the TRACER 4208 VT100 menu structure to access the TRACER Link Performance History menu page.

## > T1X STATUS/CONFIGURATION/LOOPBACK



The following menus for the T1x Status/Configuration/Loopback and T1x Performance History apply to all eight available T1 interfaces (A through H).

Figure 7 shows the T1x Status/Configuration/Loopback menu page, which displays a real-time graphical representation for the T1x link (using data from both the local and remote TRACER 4208 units) is displayed on this page. T1x operational configuration parameters and testing functions are configured from this menu.

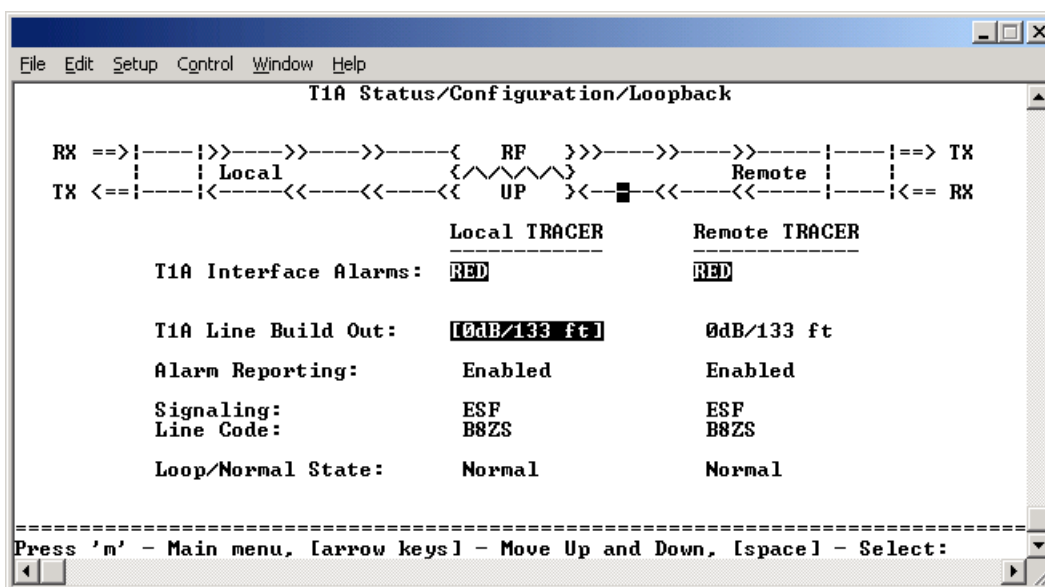


Figure 7. T1x Status/Configuration/Loopback

**>T1X STATUS/CONFIGURATION/LOOPBACK > T1X INTERFACE ALARMS**

Displays any active alarms on the T1 link (reported from both the local and remote TRACER 4208 units). These alarms include Red, Blue/AIS, Yellow, LOS, and bipolar violations (**BPV**). Table 1 briefly describes these alarms. See Section 6, *Troubleshooting Guide*, for more information on these alarms.

**Table 1. T1 Interface Alarms**

|                 |   |
|-----------------|---|
| <b>RED</b>      | Activates when a local facility failure occurs.   |
| <b>Blue/AIS</b> | Activates when an incoming remote alarm is received from a connected T1 device. An AIS signal is an unframed All One signal that replaces the normal traffic signal |
| <b>YEL</b>      | Activates when an incoming remote alarm is received from the T1 device indicating that a failure has occurred in the received direction.                            |
| <b>LOS</b>      | Activates when no T1 signal is present from the connected T1 equipment. LOS is activated after receiving 192 consecutive zeros.                                     |
| <b>BPV</b>      | Activates when the incoming T1 stream presents bipolar violations (BPVs).   |

**>T1X STATUS/CONFIGURATION/LOOPBACK > T1X LINE BUILD OUT**

Configures the T1 for the appropriate line buildout, based on the distance to the T1 equipment.

**>T1X STATUS/CONFIGURATION/LOOPBACK > ALARM REPORTING**

Determines whether the TRACER 4208 unit will report active alarms. If set to **DISABLED**, no alarms will be displayed on this menu page. The **ALARM REPORTING** parameter is independently configured for the local and remote TRACER 4208 units. When set to **DISABLED**, the front panel LED alarms are also disabled (OFF).

**>T1X STATUS/CONFIGURATION/LOOPBACK > SIGNALING**

Configures the framing format for the T1 link for both the local and remote TRACER 4208 units. The TRACER 4208 transports T1 data across the link (as long as the T1 signal is properly timed). Configure the framing format (using the **SIGNALING** menu) to enable the TRACER 4208 to monitor incoming framing error events and indicate problems with the attached metallic service. The TRACER 4208 supports both **ESF** and **D4** framing formats.

**>T1X STATUS/CONFIGURATION/LOOPBACK > LINE CODE**

Sets the line coding for the T1 link. The TRACER 4208 supports **B8ZS** and **AMI** line coding.

**>T1X STATUS/CONFIGURATION/LOOPBACK > LOOP/NORMAL STATE**

Controls the loop status of the T1 link. Activates/deactivates loopback conditions for testing purposes.

**>T1X STATUS/CONFIGURATION/LOOPBACK > LOOP/NORMAL STATE > NORMAL**

Defines the T1 link as normal data transport mode - there are no active loopbacks.

**>T1X STATUS/CONFIGURATION/LOOPBACK > LOOP/NORMAL STATE > LINK**

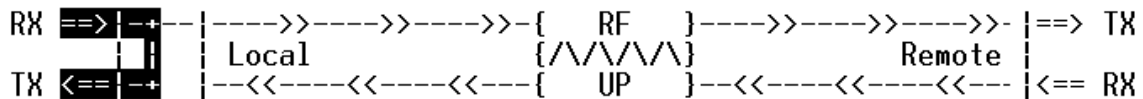
Activates a loopback at the TRACER 4208 T1 framer towards the wireless link (see Figure 8). Use the **LINK** loopback to test data path integrity from one unit across the wireless link.



**Figure 8. T1 Link Loopback**

**>T1X STATUS/CONFIGURATION/LOOPBACK > LOOP/NORMAL STATE > LINE**

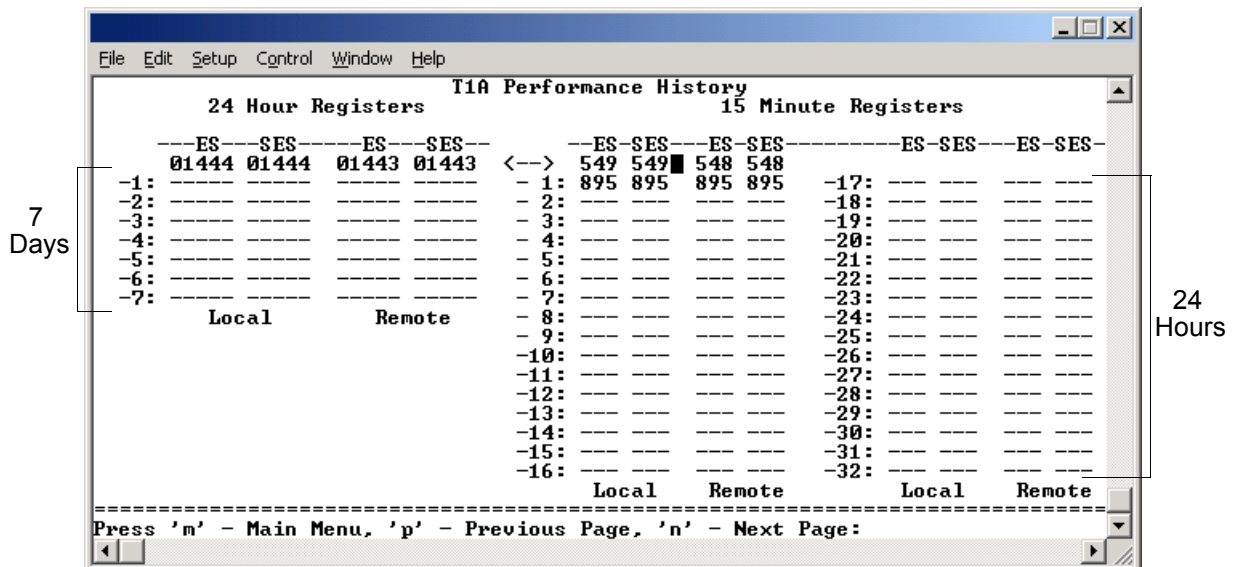
Activates a loopback at the TRACER 4208 T1 framer towards the locally connected T1 equipment (see Figure 9). Use the **LINE** loopback to test data path integrity from the TRACER 4208 unit to the T1 equipment.



**Figure 9. T1 Line Loopback**

**>T1X PERFORMANCE HISTORY**

Figure 10 shows the T1x Performance History menu page, which displays detailed error statistics for the T1 link (from both the local and remote TRACER 4208 units) in 15-minute increments.



**Figure 10. T1x Link Performance History**

T1 performance data is presented as Errored Seconds (ES) and Severely Errored Seconds (SES) on the T1 link. The following events qualify as an ES–AIS, LOS or LOF Alarm Second, a single bipolar violation (BPV), excessive zero event, or a single parity bit. An SES is caused by an AIS, LOS or LOF Alarm Second, excessive BPVs, or framed parity bit errors causing a line bit error rate (BER) of  $10^{-6}$ .

The error count for the most recent 24 hours are recorded and displayed on the right side of the page. The left side of the page displays the 24 hour totals for the most recent 7 days.



*Press <N> to view the next 8 hours worth of 15-minute totals and <P> to view the previous 8 hours.*



*Press <2> from any menu in the TRACER 4208 VT100 menu structure to access the T1x Link Performance History menu page.*



# TROUBLESHOOTING GUIDE

*Provides helpful information for troubleshooting common configuration problems for the TRACER 4208.*

## CONTENTS

|   |           |
|---|-----------|
| <b>Overview</b> .....                                       | <b>56</b> |
| <b>LED Indicators</b> .....                                 | <b>56</b> |
| PWR LED .....   | 56        |
| TST LED .....   | 56        |
| RF DOWN LED .....   | 56        |
| RF LOW LED .....  | 57        |
| T1 Interface Alarm LEDs .....                               | 57        |
| <b>RF Errors</b> .....                                      | <b>58</b> |
| <b>Step-by-Step Troubleshooting</b> .....                   | <b>58</b> |
| <b>Installing/Troubleshooting the TRACER Hardware</b> ..... | <b>58</b> |
| Installing/Configuring T1 Hardware .....                    | 59        |

## 1. OVERVIEW

This troubleshooting guide provides recommended actions for various conditions of the TRACER 4208 system. The status LEDs (located on the front panel of the unit) provide information to help determine the necessary troubleshooting action. Recommended actions for resolving possible status LED indicators are contained in this guide.

## 2. LED INDICATORS

### PWR LED

If the **PWR LED** is not **ON** and solid green, it is an indicator that the TRACER 4208 is not receiving adequate DC power.

#### ***Recommended Actions:***

1. Verify that the power source is delivering between 21 and 60 VDC.
2. Check the polarity of the power connection (referenced to ground) of both the TRACER 4208 unit and the power source.
3. Check the internal fuse. The fuse is accessed from the rear panel of the unit. If this fuse is open, replace with a 1 A, 250 V (2-inch) slow-blo fuse.

### TST LED

The **TST LED** will remain **ON** (solid amber) during power-up to indicate a self-test is in progress. If the **TST LED** is blinking or remains **ON** after 10 seconds, this indicates that the TRACER 4208 unit has failed the self-test. This is an internal failure, and ADTRAN technical support should be contacted.

### RF DOWN LED

If the **RF DOWN LED** is **ON** (solid red), it is an indicator that there is a problem with the RF link to the TRACER 4208.

#### ***Recommended Actions:***

1. Check the RF coaxial cable connection.
2. Measure the RSSI voltage. If the signal is acceptable (> 2.0 VDC at RSSI test point), go to Step 6.
3. Verify that one end of the link is configured as Plan A and the other end as Plan B, and that both ends have the same bandplan Number (ex. A1 and B1).
4. Verify that the antenna polarization is the same at both ends of the RF signal transmit and receive path.
5. Verify the RF signal path is clear.
6. Check for possible interference at both ends of the link. If necessary, change polarization and/or bandplans at both ends.



## RF LOW LED

If the **RF LOW** LED is **ON** (solid red), it is an indicator that the received signal is within 10 dB (approximately) of the minimum operable signal. This condition is typically indicative of a path problem.

### **Recommended Actions:**

1. Verify the far-end transmitter power setting is the value that the link planning budget allows.
2. Check all coaxial cable connectors for solid connections. Check for water and corrosion around any of the connectors. If water is apparent in the coaxial connectors, replace the coaxial cable and the connectors, making sure to properly weatherproof the replacements.
3. Verify the RF signal path by verifying the antenna alignment.
4. Check the integrity of the cable plant.
5. Check the integrity of lightning arrestors.

## T1 Interface Alarm LEDs

If the **ALARM** LED is **ON** (solid red), it is an indication that the TRACER 4208 is detecting an active T1 alarm. To identify the T1 interface in alarm and the specific alarm present, display the **T1(x) STATUS** screens and check the **T1(x) INTERFACE ALARMS** field.

### **Recommended Actions:**

1. Display the **T1(x) STATUS** screen and check the **T1(x) INTERFACE ALARM** field to identify the active alarm.
2. Follow the steps below for the appropriate alarm.

### **LOS Alarm (Red Alarm)**

**LOS ALARM** is an indication that the TRACER 4208 may be unable to detect a viable T1 received signal from the connected T1 equipment. This error may be due to a degraded signal or no signal, or may be caused by improper framing.

### **Recommended Actions:**

1. Verify that the T1 cable is connected to the T1 interface on the TRACER 4208.
2. Verify the connections at the opposite end of the T1 cable.
3. Verify that the framing mode (D4 or ESF) is the same for both the TRACER 4208 and the T1 equipment.

### **Yellow Alarm**

A Yellow Alarm is generated by the attached equipment. When the attached equipment's T1 interface is in Red Alarm, the TRACER 4208 generates a Yellow Alarm.

### **Recommended Actions:**

1. Follow the troubleshooting steps for Red Alarm, but do so at the attached equipment.

### **Blue Alarm**

A remote alarm (alarm indication signal or AIS) is generated by the attached equipment. The root cause must be determined at the attached equipment. A typical cause of a blue alarm is a lack of input to a CSU.

### **Recommended Actions:**

1. Verify the input to any attached data equipment.

### **BPV**

Bipolar violations (BPVs) indicate an improper configuration or faulty wiring.

#### **Recommended Actions:**

1. Verify the TRACER 4208 unit and the attached equipment are configured for the same line coding (**B8ZS** or **AMI**).
2. Verify the cable connections for the T1 interface are solid.

### **3. RF ERRORS**

RF errors can range anywhere from a nonviable microwave path to loose RF connectors.

Nonviable path conditions could be caused by physical obstructions such as buildings, mountainous terrain, trees, etc., as well as other physical limitations such as excessive path distances and in-band RF interference. These types of errors are remedied by performing a detailed line-of-site microwave path study to determine whether a microwave link is feasible for the terrain and environment under consideration.

If after performing a microwave path study the system is still not operational, ensure that the antennas are properly aligned. Note that alignment must be achieved in both elevation and azimuth for optimal link performance. The TRACER 4208 can be used to aid in antenna alignment by looking at the **Rx POWER** “fuel gauge” on the System Status or System Configuration menu pages. Optimal antenna alignment will correspond to the maximum number of RSSI bars on the TRACER 4208 terminal display.

### **4. STEP-BY-STEP TROUBLESHOOTING**

The logical troubleshooting flow presented in this section can be used to set up your TRACER 4208 system, and also to diagnose a previously installed system. Please contact ADTRAN Technical support at any stage during installation and/or troubleshooting if you require assistance.

### **5. INSTALLING/TROUBLESHOOTING THE TRACER HARDWARE**

1. Perform a detailed path profile and link budget for each TRACER 4208 microwave link. A thorough path study can be used to estimate signal power budgets, fade margins at each receiver, identify potential line-of-site obstacles, properly size antenna dishes, and determine minimum antenna dish heights above the earth.



*ADTRAN provides a wireless link planning tool on our website. This link budget tool is constructed as an easy to use spreadsheet with dropdown menus so that the user can quickly change any of the link parameters (antenna size, coaxial cable type and length, frequency band, link distance, etc) and instantly see how the microwave path availability is affected. This tool is available at [www.adtran.com/wireless](http://www.adtran.com/wireless) and can be used online or downloaded for standalone use.*

2. Setup all of the TRACER hardware on a workbench. ADTRAN recommends that the actual cables used in the permanent installation be used in the workbench setup. A rigorous workbench “simulation” of the link will help alleviate and avoid time-consuming errors.
3. Examine the **PLAN A** and **PLAN B** LEDs on the front panel of each unit. These LEDs indicate the frequency plan for each TRACER 4208 unit. The frequency plan (Plan A, Plan B) LED should be the opposite on the TRACER 4208 units.

4. Attach the RF coaxial cables to be used in the permanent installation to the N-type connectors on the back of the TRACER 4208 unit. Attach the other end of the coaxial cable(s) to an RF power meter or spectrum analyzer, if either is available. The power measured by the meter/analyzer will be the RF power available at the input of the antenna. The TRACER 4208 unit is programmed at the factory to output approximately 100 mW (20 dBm) of RF power. The actual power level measured by the meter/analyzer will be less than 100 mW due to RF losses through the coaxial cable, and is a function of the cable type and length being used. In any event, the power level at the output of the coaxial cable should be a significant fraction of 100 mW. A power meter/analyzer reading that is not on the order of at least tens-of-milliwatts could be an indication of any combination of either unsuitable RF, faulty, or unreasonably long coaxial cable.
5. Resolve all RF coaxial cabling errors before proceeding.
6. Attach the RF coaxial cables to a high-quality attenuator, if possible. If you do not have an attenuator, attach the coaxial cables to the antennas to be used in the permanent installation. If the installation antennas are not available, small, inexpensive dipole or patch antennas can be used for verification purposes. If an adjustable attenuator is being used, dial in the amount of attenuation that corresponds to the path loss value expected for the microwave link in which the TRACER hardware will be installed. The path loss value can be calculated from a knowledge of the path length, or provided by a path study. Remember to subtract both antenna gain values from the attenuator level if these values have not already be accounted for.
7. After setting up the RF pieces, examine the **RF DOWN** LED on the front panel of each TRACER 4208 unit. If the **RF DOWN** LED is illuminated (red), the corresponding TRACER 4208 is not receiving a suitable RF signal from the other TRACER 4208 unit. In this case, the receiving TRACER 4208 is either receiving a very weak signal, or no signal at all. If the **RF DOWN** LED is not illuminated, then the TRACER 4208 units are receiving a suitable RF signal. Suitable RF power levels for low error rate communication will range from -30 dBm to -86 dBm measured at the N-type connector input on the TRACER 4208 unit.
8. Resolve any signal level issues before proceeding.
9. Examine the **RF LOW** LED on the front panel of each TRACER 4208. If this LED is illuminated, then the TRACER 4208 is receiving a relatively weak signal; however, if the **RF DOWN** LED is not illuminated, then the received signal is being suitably processed by the TRACER 4208 system. If you are receiving a weak signal (**RF LOW** is **ON**), please verify that the weak signal is not being caused by a faulty cable, an insufficiently tightened cable, or some other installation-related problem. Also, make sure an unreasonably large attenuation value has not been selected if you are using an attenuator on a workbench setup.

Use the tables in Section 2, *Microwave Path Engineering Basics*, of this manual to select the proper free-space attenuation value (in dB) based on the estimated length of the microwave path. Remember to subtract both antenna gains (local and remote) from the attenuator setting.
10. Command a link loopback in one TRACER 4208 unit and run a test pattern from the connected T1 equipment. This will verify the data path between the T1 equipment and the TRACER 4208 unit.



*External pattern generators are required to test data path integrity. A T1 BERT tester is suggested.*

**Installing/Configuring T1 Hardware**

1. If possible, attach any or all of the intended T1 hardware to the TRACER 4208 units using the same workbench setup. This step offers the perfect opportunity to configure your T1 hardware for proper functioning with the TRACER hardware.
2. To significantly reduce the probability of an unsuccessful field installation, resolve any remaining T1 equipment-to-TRACER 4208 configuration issues before field installation.