



DA-12 RF REMOTE CONTROL KEYFOB

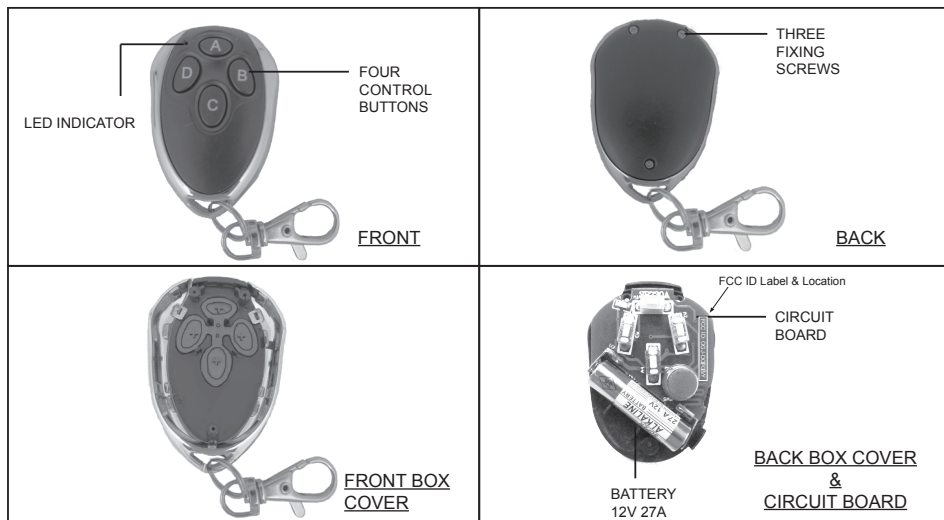
INTRODUCTION

DA-12 is a 4 channel remote control keyfob working on 433MHZ, which is compatible with the receiver in the DA-2800, DA-2311 and AD-2322 controllers. It has four buttons A, B, C and D for sending out signals to activate the corresponding four output channels 1, 2, 3 and 4 in the receiver unit.

SPECIFICATIONS

- Number of ID Codes : Over 1 Million, Pre-set
 - Number of Control Channels : 4
 - a) Channel 1 (Button A) - Activates Output 1 in Receiver
 - b) Channel 2 (Button B) - Activates Output 2 in Receiver
 - c) Channel 3 (Button C) - Activates Output 3 in Receiver
 - d) Channel 4 (Button D) - Activates The Door Chime in Receiver
 - Operating Frequency : 433 MHZ
 - Control Distance : 50 Meters Approx. in Open Space
 - Operation Voltage : 12V Alkaline Battery, Type 27A (Not included)
 - Weight : 32g
- Specifications are subject to change for modifications without notice.

THE ASSEMBLY



EQUIP THE BATTERY

DA-12 is supplied without battery. It is required to equip a 12V, type 27A alkaline battery in it before use.

- 1) Un-screw the three fixing screws on the back of the unit.
- 2) Take out the back cover carefully to prevent damage of the circuit board that is stuck on it.
- 3) Equip a 12V, type 27A alkaline battery in it with correct polarity as indicated.
- 4) Hold the back cover and circuit board assembly firmly and put them back on the front box in the right position.
- 5) Fix the whole assembly firmly with the three fixing screws.

OPERATION

- 1) Press the corresponding button to give control to the desired channel.
- 2) The LED indicator lights up while the unit is transmitting signals.
- 3) The unit consumes power only on the button is pressed. Please handle the unit carefully while it is kept in pocket or handbag. Accidental touch of the button will shorten battery life.

FCC Caution:

Any changes or modifications not expressly approved by the party responsible for compliance could void the user's authority to operate this equipment.

This device complies with Part 15 of the FCC Rules. Operation is subject to the following two conditions:

- (1) This device may not cause harmful interference, and*
 - (2) this device must accept any interference received, including interference that may cause undesired operation.*
- This device and its antenna(s) must not be co-located or operating in conjunction with any other antenna or transmitter.*

NOTE:

This equipment has been tested and found to comply with the limits for a Class B digital device, pursuant to Part 15 of the FCC Rules. These limits are designed to provide reasonable protection against harmful interference in a residential installation. This equipment generates, uses and can radiate radio frequency energy and, if not installed and used in accordance with the instructions, may cause harmful interference to radio communications. However, there is no guarantee that interference will not occur in a particular installation. If this equipment does cause harmful interference to radio or television reception, which can be determined by turning the equipment off and on, the user is encouraged to try to correct the interference by one or more of the following measures:

- Reorient or relocate the receiving antenna.*
- Increase the separation between the equipment and receiver.*
- Connect the equipment into an outlet on a circuit different from that to which the receiver is connected.*
- Consult the dealer or an experienced radio/TV technician for help.*