

# Airtame 2

## Content

Whats in the box

Safety precautions

Legal, warranty and regulatory info

How to setup and use

For more information, visit [airtame.com/support](http://airtame.com/support)

## What's in the box?

### Airtame 2

The Airtame 2 is connected with the Aircord USB-C.

### Aircord

The Aircord is a y-shaped cable that connects the Airtame 2 through USB-C to an HDMI port on a TV / projector as well as the Airtame 2 power supply through USB-A.

### Power supply

The power supply is required to power the Airtame 2. Use only the power supply provided with the Airtame 2, or other approved Airtame powering accessories.

**Important:** The Airtame 2 should not be powered by plugging the USB A into the TV / projector. It is not an adequate power source and is not recommended.

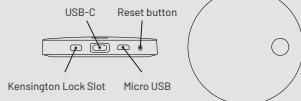
### Magnetic wall mount

The magnetic wall mount can be magnetically fixed to the back of the Airtame 2, and is used for mounting the Airtame 2.

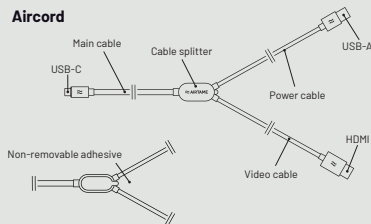
For flexible mounting, attach the magnetic wall mount to a magnetic area without removing the protective seal.

For permanent mounting, use the non-removable

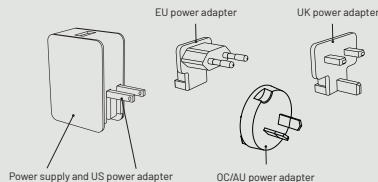
### Airtame 2



### Aircord



### Power supply



### Magnetic wall mount



adhesive on the back of the magnetic wall mount, and attach it to a hard, clean surface, such as a wall.

### Non-removable adhesive

On the back of the Aircord cable splitter the magnetic wall mount, are protective seals covering a non-removable adhesive.

Each non-removable adhesive is optional and can be used to stick to a clean surface, such as a wall, and other non-magnetic areas.

**Important:** We advise that you only use the non-removable adhesive once you have chosen a permanent location for the Airtame 2.

## Safety precautions

The Airtame 2 has been designed with high attention to the safety of the user. However, if used improperly, the Airtame 2 can potentially cause fire, electrical shock or personal injury. To avoid any accidents, please pay attention to these guidelines:

- Use only the power supply and Aircord provided in the box, or the Airtame PoE Adapter or Extension Cord accessories (bought seperetarely) commended by Airtame. Using other cables or power supplies can influence or potentially damage the performance of the device.
- Do not extend the USB part of the Aircord (the power cable) e.g. by means of USB extender, USB hubs or similar. To extend the reach of the power cable use the Airtame Extension Cord accessory or a standard power extension cable.
- Note: The Airtame 2 has been approved for use with power extension cables up to of 3m (9'10").

- Be careful when using the power supply and only use this in combination with the Airtame 2 in dry locations to avoid the risk of electric shock.
- Do not use the Airtame 2 outdoors.
- Do not place the Airtame 2 in direct sunlight.
- Do not expose the Airtame 2 including the Aircord or power supply to water or extreme conditions (moisture, heat, cold, dust) as it could potentially damage or cause it to malfunction.
- Stop the use of the Airtame 2 immediately if it (i) functions in an abnormal manner, (ii) produces unusual sounds, or (iii) produces unusual odors.
- Do not attempt to disassemble or repair the Airtame 2 yourself. Doing so voids the limited warranty and could harm you, your TV/projector, and/or the Airtame 2.
- The non-removable adhesives on the magnetic wall mount and the Aircord may leave marks or detach from the plastic.
- The Airtame 2 generates heat during use which results in a temperature increase on the surface as it leads the heat away, especially when running at full capacity. Handle with caution as the surface can feel hot to the touch. If you wish to remove it, unplug the Airtame 2 from the power source and let it cool down before touching it.
- Do not mount the Airtame 2 on a hot surface or near a ventilation or hot air exhaust as this can increase its temperature and cause it to malfunction or shut down.
- The recommended ambient operating temperature of the Airtame 2 is: 5 to 30 °C (41 to 86 °F).

- The recommended Operating Humidity is 20-90%RH non-condensing.
- **WARNING: Choking hazard.** Some Airtame 2 accessories may present a choking hazard to small children. Keep these accessories away from small children.
- **WARNING: Strong magnetism.** Avoid placing any media that contains magnets or is sensitive to magnetism, such as bank cards, audio/video, tapes, or magnetic memory devices, near the magnetic wall mount. Media containing information sensitive to magnets should be kept at least 5 cm (2 inches) away from the product. Similarly, magnet-sensitive devices, such as a mechanical watch or measuring device, can be damaged if they come too close to the magnetic wall mount.

## Legal notices

Model: **AT-DG2**  
 FCC ID: **2ADEFAT-DG2**  
 IC: **12460A-ATDG2**

### Legal entities

Airtame Inc.  
 109 S 5th St.  
 Brooklyn, NY 11249  
 United States

Airtame ApS  
 Kuglegårdsvej 17  
 1434 København K  
 Denmark

### License agreement and general terms

The use of any software related to Airtame 2 or any products by Airtame ApS / Airtame Inc are governed by the Terms of Service and End User License Agreement which can be found at [airtame.com/terms](https://airtame.com/terms)

When using the Airtame 2 or any products of Airtame ApS / Airtame Inc you acknowledge and accept those terms.

### Warranty information

As warranty is region-dependant please check warranty information at [airtame.com/terms](https://airtame.com/terms)

### The latest versions of this manual

Please find the latest version of this manual on the company website: [airtame.com/setup](https://airtame.com/setup)

## Federal Communication Commission (FCC) Interference Statement

This equipment has been tested and found to comply with the limits for a Class B digital device, pursuant to Part 15 of the FCC Rules. These limits are designed to provide reasonable protection against harmful interference in a residential installation.

This equipment generates, uses and can radiate radio frequency energy and, if not installed and used in accordance with the instructions, may cause harmful interference to radio communications. However, there is no guarantee that interference will not occur in a particular installation.

If this equipment does cause harmful interference to radio or television reception, which can be determined by turning the equipment off and on, the user is encouraged to try to correct the interference by one of the following measures:

- Reorient or relocate the receiving antenna.
- Increase the separation between the equipment and receiver.
- Connect the equipment into an outlet on a circuit different from that to which the receiver is connected.
- Consult the dealer or an experienced radio/TV

technician for help.

This device complies with Part 15 of the FCC Rules. Operation is subject to the following two conditions: (1) this device may not cause harmful interference, and (2) this device must accept any interference received, including interference that may cause undesired operation.

#### FCC Caution

Any changes or modifications not expressly approved by the party responsible for compliance could void the user's authority to operate this equipment.

IEEE 802.11g/n operation of this product in the U.S.A. is firmware-limited to channels 1 through 11.

#### Wireless Radio Use

This device is restricted to indoor use when operating in the 5.15 to 5.25 GHz frequency band.

#### FCC Radiation Exposure Statement

To satisfy FCC and IC exposure requirements, a separation distance of at least 20 cm (8 inches) should be maintained between the antenna of this device and persons during device operation. Operations at closer than this distance are not recommended.

The antenna used for this transmitter must not be co-located in conjunction with any other antenna or transmitter.

#### Note to US model owner

To comply with US FCC regulation, the country selection function has been completely removed from all US models.

The availability of some specific channels and/or operational frequency bands are country dependent and are firmware programmed at the factory to match the intended destination. The firmware setting is not

accessible by the end user.

### Industry Canada (IC) notices English

Under Industry Canada regulations, this radio transmitter may only operate using an antenna of a type and maximum (or lesser) gain approved for the transmitter by Industry Canada.

To reduce potential radio interference to other users, the antenna type and its gain should be so chosen that the Equivalent Isotropically Radiated Power (EIRP) is not more than that necessary for successful communication.

This device complies with Industry Canada licence-exempt RSS standard(s). Operation is subject to the following two conditions: (1) this device may not cause interference, and (2) this device must accept any interference, including interference that may cause undesired operation of the device.

#### French

Conformément à la réglementation d'Industrie Canada, le présent émetteur radio peut fonctionner avec une antenne d'un type et d'un gain maximal (ou inférieur) approuvé pour l'émetteur par Industrie Canada.

Dans le but de réduire les risques de brouillage radioélectrique à l'intention des autres utilisateurs, il faut choisir le type d'antenne et son gain de sorte que la Puissance Isotrope Rayonnée Équivalente (PIRE) ne dépasse pas l'intensité nécessaire à l'établissement d'une communication satisfaisante.

Le présent appareil est conforme aux CNR d'Industrie Canada applicables aux appareils radio exempts de licence. L'exploitation est autorisée aux deux conditions suivantes : (1) l'appareil ne doit pas produire

de brouillage, et (2) l'utilisateur de l'appareil doit accepter tout brouillage radioélectrique subi, même si le brouillage est susceptible d'en compromettre le fonctionnement.

#### IC Radiation Exposure Statement

Cet appareil est conforme aux limites d'exposition aux rayonnements de la IC CNR-102 définies pour un environnement non contrôlé. Afin d'éviter la possibilité de dépasser les limites d'exposition aux fréquences radio de la IC CNR-102, la proximité humaine à l'antenne ne doit pas être inférieure à 20cm (8 pouces) pendant le fonctionnement normal.

#### Wireless Radio Use

Cet appareil est restreint à usage en intérieur pour la bande de fréquence 5.15-5.25 Ghz.

### European union

Airtame ApS declares that this equipment is in compliance with the essential requirements and other provisions of Directive 2014/53/EU.

The full Declaration of Conformity can be found at [airtame.com/compliance](http://airtame.com/compliance)

Waste management of Airtame follows the WEEE Directive 2012/19/EU and the RoHS recast Directive 2011/65/EU. More information can be found at [airtame.com/compliance](http://airtame.com/compliance)

#### Airtame 2 is designed by

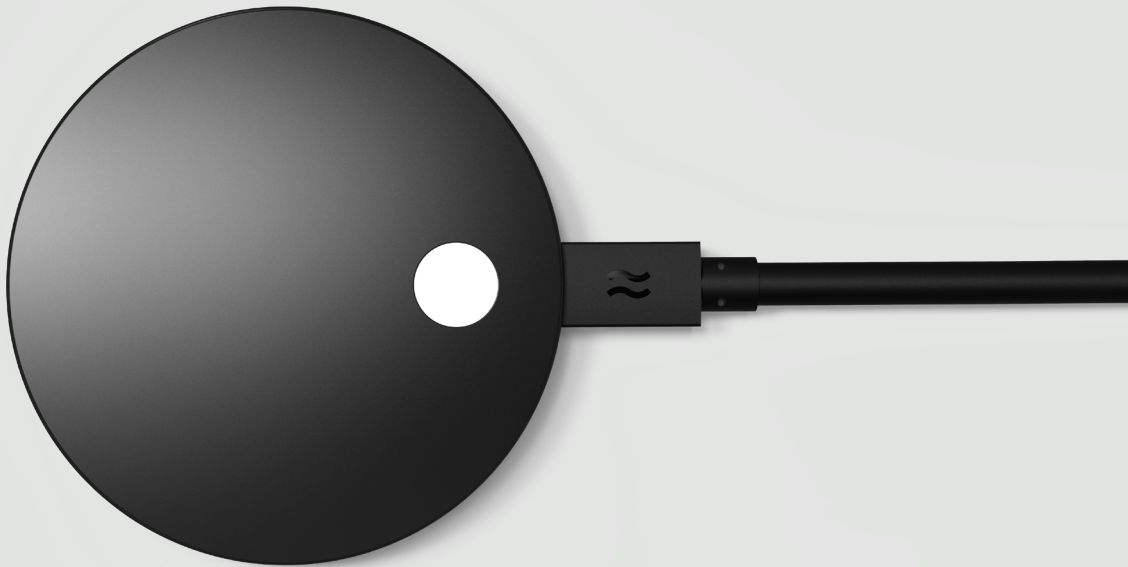
Airtame ApS / Airtame Inc  
FVIN: [cyw89342-dfs\\_llg.clm\\_blob](mailto:cyw89342-dfs_llg.clm_blob)

[www.airtame.com](http://www.airtame.com)

FC CE RoHS 



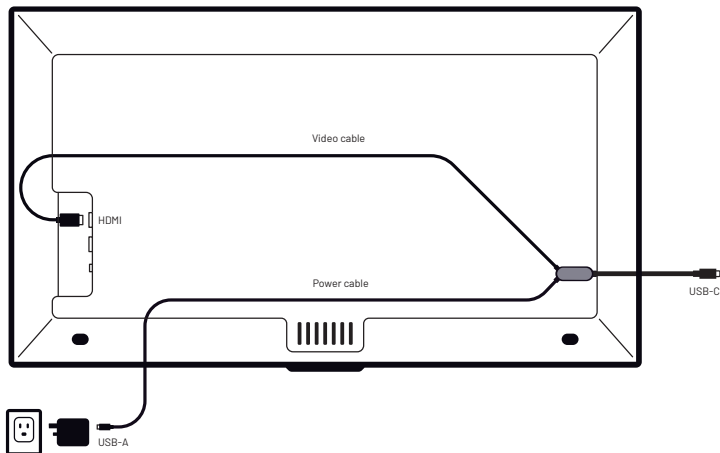
 **AIRTAME**



## **Installation guide**

The optimal installation is only a few steps away

# 1. Plug in the Aircord

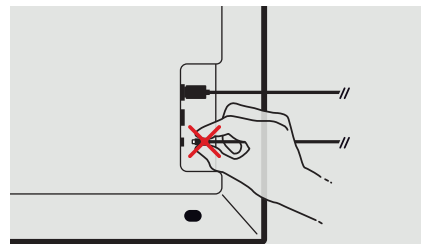


## HDMI

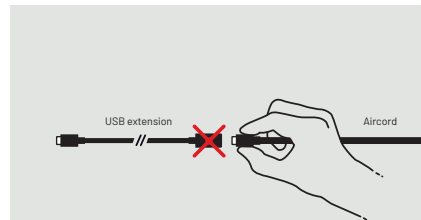
Connect the video cable (HDMI) to the TV.

## Powering Airtame 2

Connect the power cable (USB-A) to the power supply. Use the provided power supply to power the Airtame 2, or the Airtame PoE Adapter accessory (bought seperately).



**Do not** power Airtame 2 through the TV.



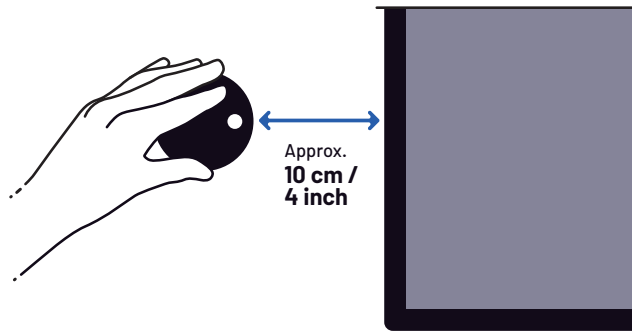
**Do not** extend the Aircord power cable with USB extension

## 2. Mount the Airtame 2

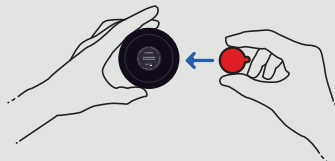
For optimal streaming, mount the Airtame 2 on the wall approx. 10 cm / 4 inches from the edge of the TV using the non-removable adhesive.

### ⚠ Permanent mounting

The non-removable adhesive is optional and can be stuck to a hard surface, such as a wall. Use the non-removable adhesive for **permanent** installation.



### Optional: Flexible mounting



Fix the magnetic wall mount to the back of the Airtame 2 and attach it to

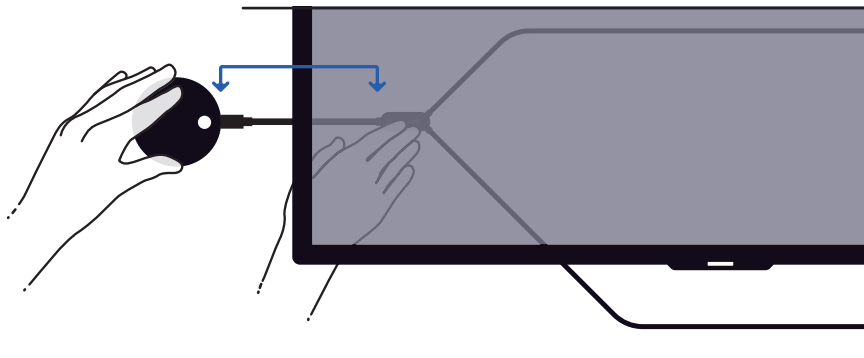
a magnetic area **without removing the protective seal.**

The backs of many TVs are magnetic.

The magnet **will not** damage the TV or projector.

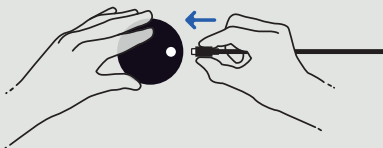
⚠ Wi-Fi signal may be weaker when mounting behind the TV.

### 3. Cable management



**Keep the Airtcord straight** and stick the cable splitter to a surface behind the TV.

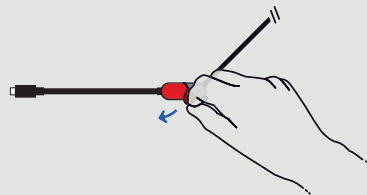
Press gently to ensure that the non-removable adhesive sticks to the surface.



**Hold Airtame 2** onto the magnetic wall mount while plugging in the USB-C cable.



**Remove** the protective seal and expose the **non-removable adhesive** on the back of the magnetic wall mount.

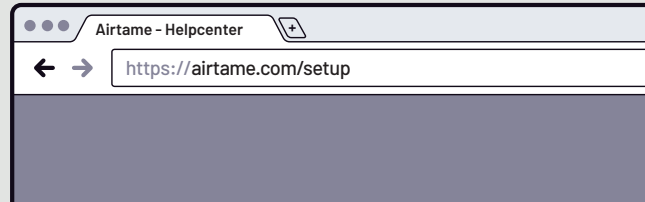


**Remove** the protective seal and expose the **non-removable adhesive** on the cable splitter.

## 4. Download the Airtame app (and join the cloud)

1. Go to [airtame.com/setup](https://airtame.com/setup) and download the Airtame app that fits the operating system.

To connect to your Airtame, users need to download the Airtame app.



2. Install app and follow the instructions.



3. Create an organization at [airtame.cloud](https://airtame.cloud) and add the Airtame 2 for easy management and more.

