

KOΛMΤAC

KBD401

USB Bluetooth Dongle

User Manual

For Windows 7 / 8 OS

Regulatory Compliance



FCC ID : VH9KBD401

CE2200

Modification not expressly approved by the manufacture could void the user's authority to operated the equipment under FCC rules.

About This guide

This user guide contains information that you need to install and configure the KoamTac USB Bluetooth dongle.

How this guide is organized.

This guide contains the following parts:

- **Chapter 1: Knowing your USB Bluetooth dongle**
This chapter provides information on the package contents, system requirements, and specifications of the KoamTac USB Bluetooth dongle.
- **Chapter 2: Getting started**
This chapter describes how to install.
- **Chapter 3: Pairing with a Bluetooth device**
This chapter describes how to pair your computer with another Bluetooth devices.
- **Chapter 4 : Appendices**
This chapter provides you with the regulatory Notices and Safety Statements.

Package contents

- KoamTac KBD401
- Quick Start Guide

System requirements

Before using your KBD401 USB Bluetooth dongle, ensure that your system meets the following requirements:

Operating system: Microsoft Windows 7 / 8

System memory: 512MB or larger

Hard drive free space: 10MB

KBD401 specifications summary

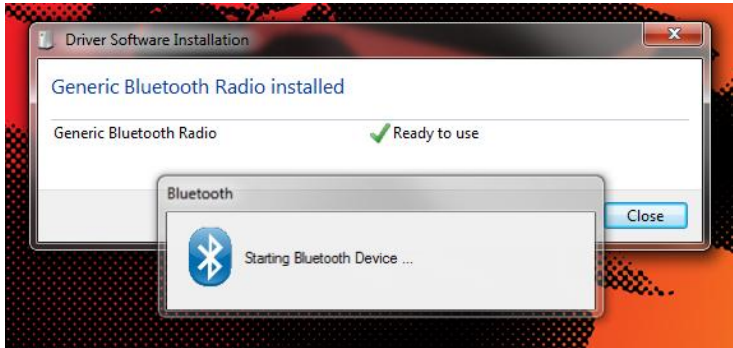
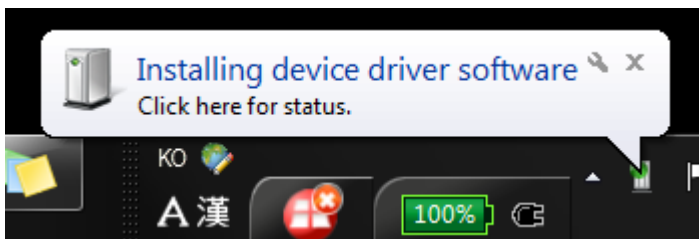
Feature	Compliant with Class I Bluetooth v2.0 and v2.1 Enhanced Data Rate(EDR) support Adaptive Frequency Hopping(AFH) support
Chipset	CSR8510
Bluetooth Standards	Class I Bluetooth v2.1 + EDR Bluetooth 4.0
Interface	USB 2.0/1.1
Antenna	Internal
Range	Up to 30 meters(depending on the environment)
Bluetooth Profile	SPP, HID, DUN, PAN, HCRP
Radio Frequency	2.4 GHz - 2.4835 GHz
Transfer Rate	Up to 3.0Mbps
OS support	Windows 7/8
Power Consumption	5V, 90mA max
Input Power	5V (USB bus-powered)
Physical Dimensions	22mmx15mmx5.35mm (LxWxH)
Weight	2.0g

*Specifications are subject to change without notice.

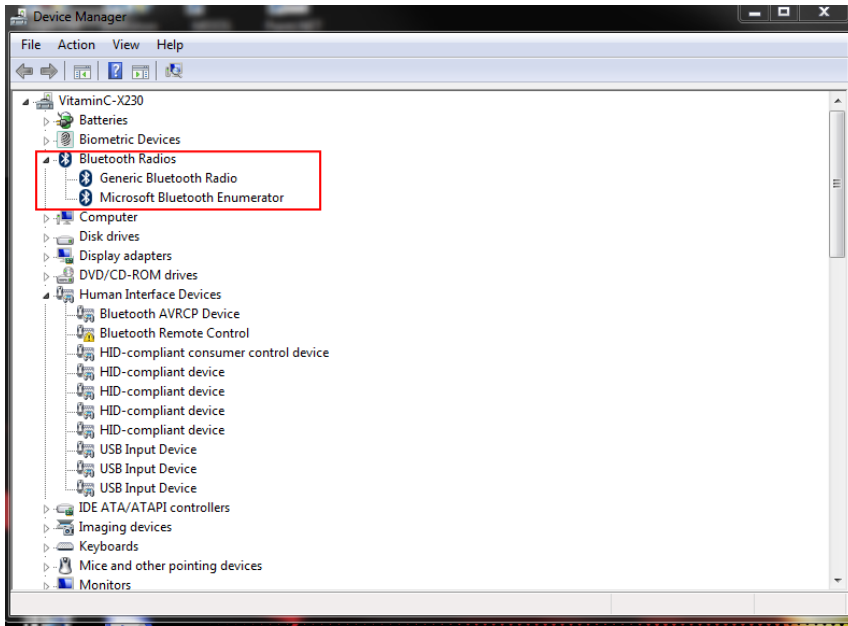
Getting Start

To install the Bluetooth driver to your computer.

1. There is no driver CD cause Windows will install "Generic Bluetooth Radio" driver automatically.
2. Insert USB BT Dongle into your computer's usb port.
3. Computer will display below message.

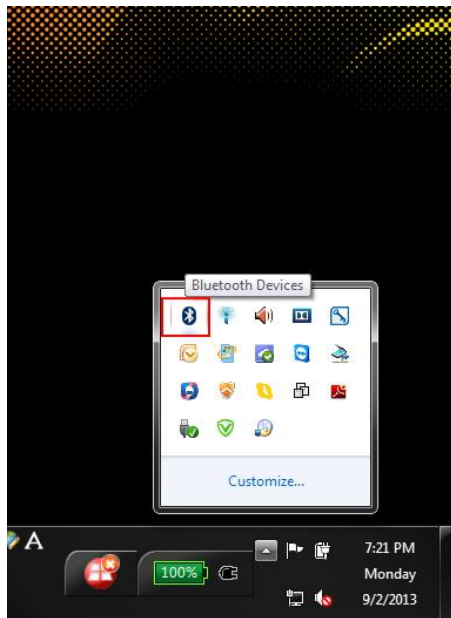


4. If driver install successfully, you can find the device in device manager (Click Start > Control Panel > Hardware and Sound > Device Manager)

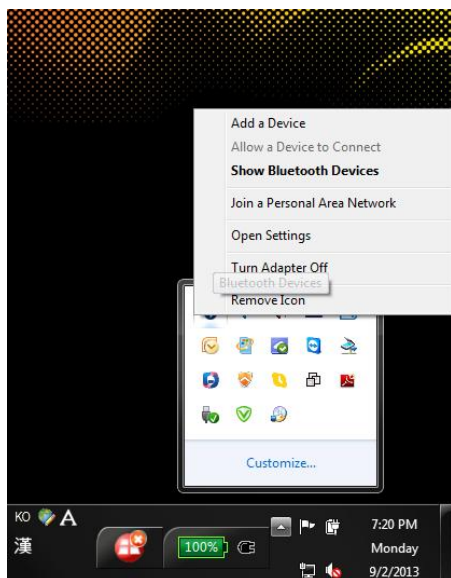


Pairing with a Bluetooth Device

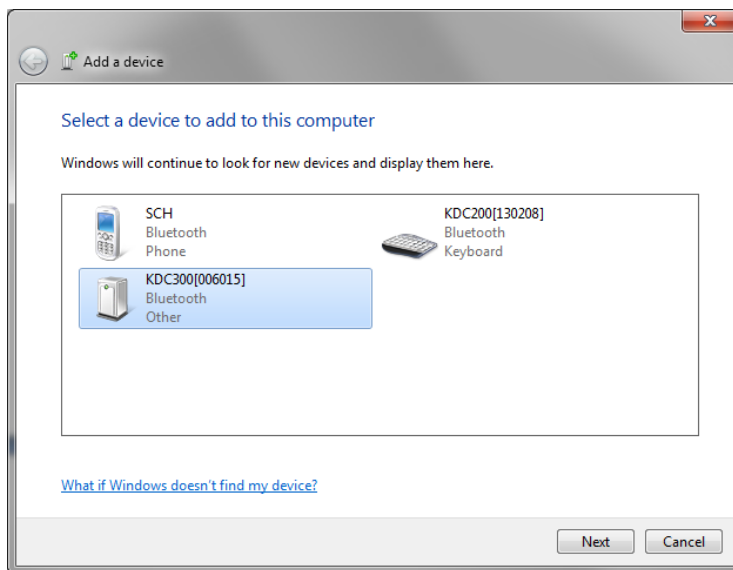
1. Click Bluetooth icon on tray.



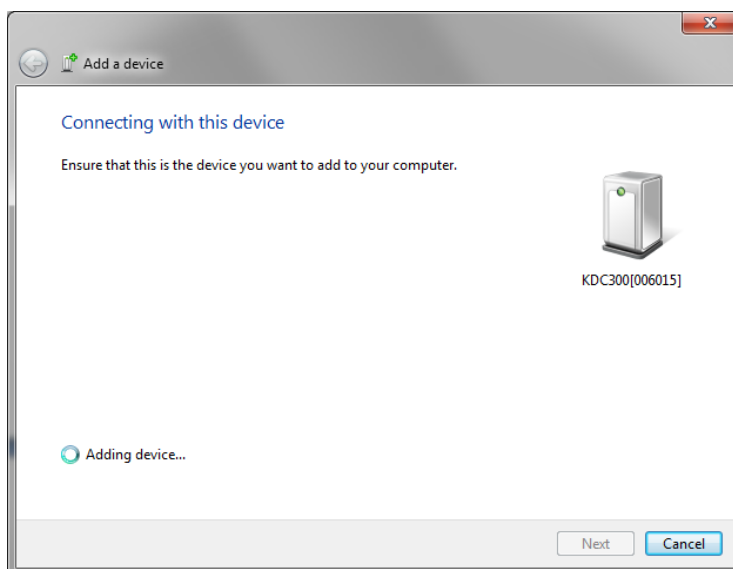
2. Click Add a Device menu



3. Select Bluetooth Device on the list.



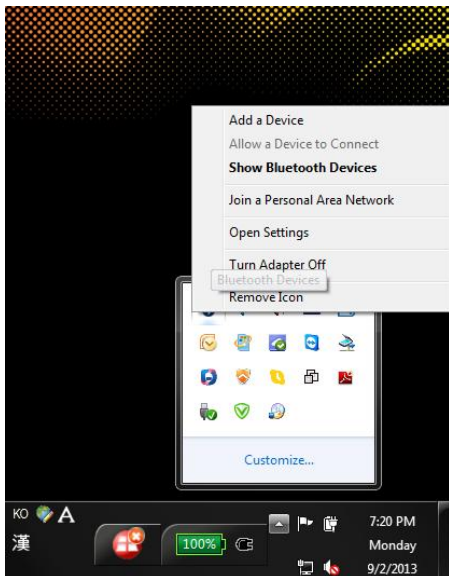
4. Select Next.



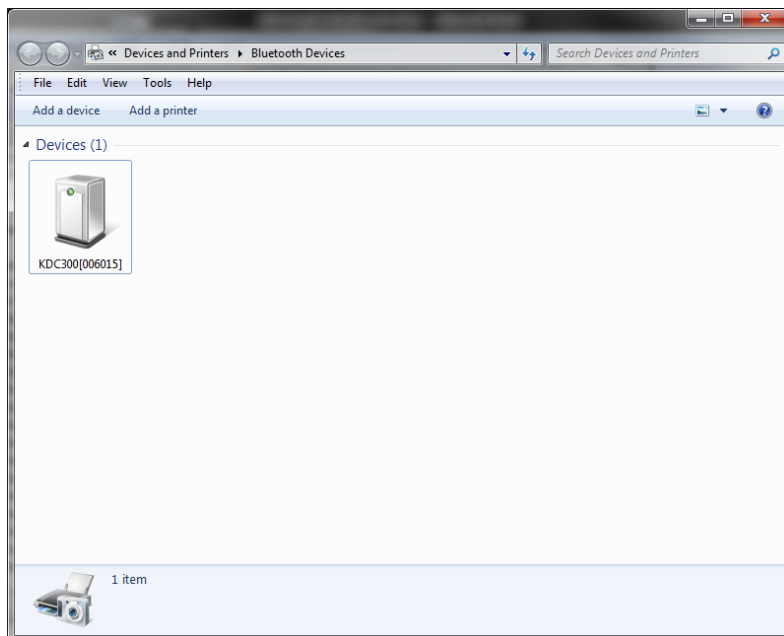
5. Finish Add a Device

Find Bluetooth Serial Comport

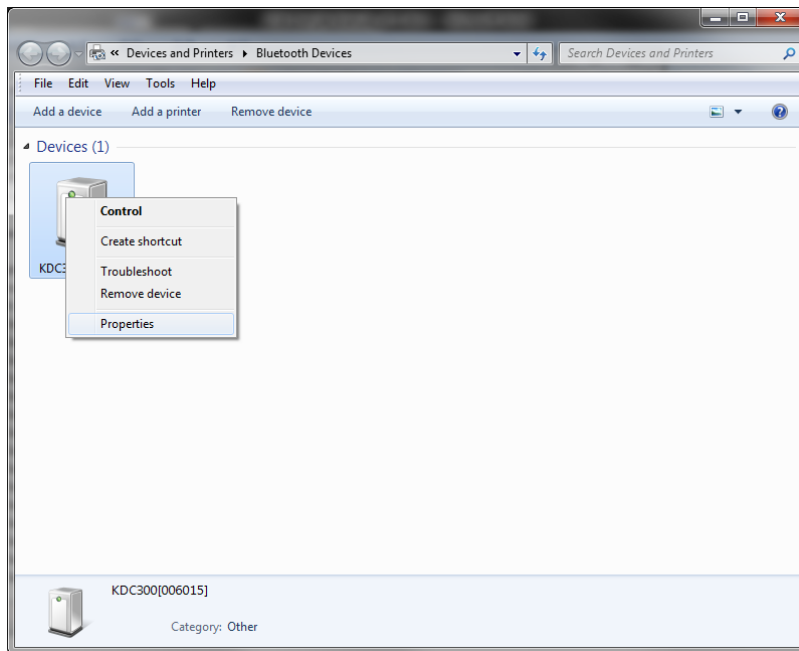
1. Enter Bluetooth device list via "Show Bluetooth Devices" menu



2. Select Bluetooth device to find serial comport #



3. Click right mouse button and click Properties menu



4. Select Hardware tab menu. You can find Bluetooth device's serial comport #.

