

KDC100

USER MANUAL

Rev0.9



AI SOLUTION

오류! 스타일이 정의되어 있지 않습니다.

KDC100 Introduction

The AISOLUTION data collector KDC100 is a compact, light and powerful reader with a rechargeable battery, OLED display, large memory and connections to PC, PDA and cellphone using serial and USB cable.

KDC100 is well suited for a variety of portable applications. It can be used as an accessory to a PDA or cellphone as well as an independent data collector.

The key features of KDC100 are

- **Bright OLED display**
- **Built in swing-out USB connector**
- **Rechargeable Li-Poly battery with separate installation space for easy replacement**
- **Top of the line laser scan engine**
- **Auto uploading scanned data to the host device upon connecting either USB or serial port**
- **Large data memory**

The KDC100 also provides seamless integration of barcode capability into your application by providing a user friendly software development kit.

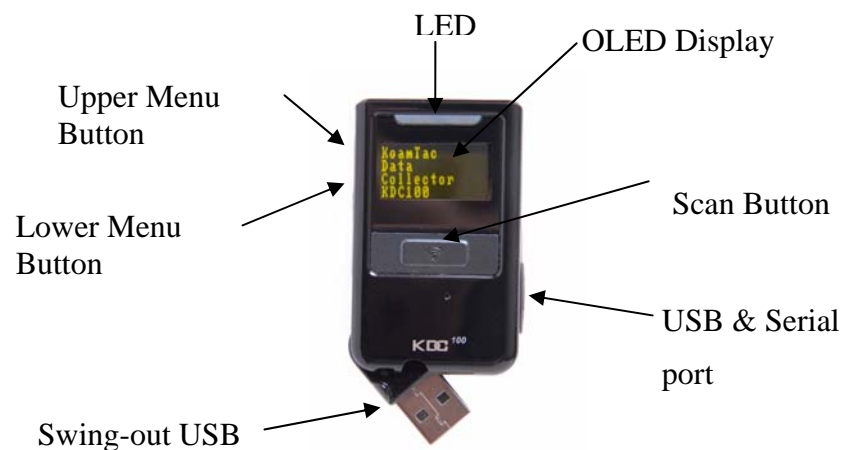
Installation and Operation

Installation

Prior to installing the included software on your PC, verify that your system meets the minimum system requirements.

1. Microsoft Windows operating system: 2000 or XP
2. Free space on hard drive of 512 MB.
3. Accessible USB port for connecting the KDC100 to your computer
4. 256M byte memory or larger.

Location of buttons



Basic Operation

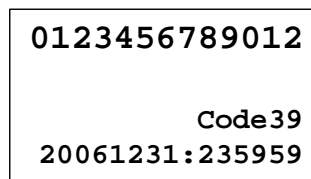
Reading barcodes

Point the KDC100 to the barcode and press the trigger key.

A High beeper tone will be heard upon a successful scan.

The front panel LED will illuminate in green.

The scanned barcode will be displayed, along with barcode type and time stamp.



When the barcode cannot be read, try the following:

- Check that the width of barcode label does not exceed the width of the light beam.
- Change the angle between the barcode and KDC100.
- Change the distance between the barcode and KDC100.
- Check option settings.

Upload barcode data to PC.

Use the included Synchronization program to upload barcode data from KDC100 to your PC.

Start **KTSync** program

Configure Synchronization options

Execute Sync. Operation

KDC100 Menus

The user can access menu selection mode by pushing both buttons on the right side of the KDC100 simultaneously. The table below summarizes the KDC 100 menus.

Level 1	Level 2	Note
View Data	Delete	Review and delete stored data
Set Barcodes	EAN13	Enable/Disable Symbology
	EAN8	Enable/Disable Symbology
	UPCA	Enable/Disable Symbology
	UPCE	Enable/Disable Symbology
	CODE39	Enable/Disable Symbology
	ITF14	Enable/Disable Symbology
	CODE128	Enable/Disable Symbology
	I2of5	Enable/Disable Symbology
	CODABAR	Enable/Disable Symbology
	EAN128	Enable/Disable Symbology
	CODE93	Enable/Disable Symbology
	CODE35	Enable/Disable Symbology
	BooklandEAN	Enable/Disable Symbology
	EAN13withAddon	Enable/Disable Symbology
	EAN8withAddon	Enable/Disable Symbology
	UPCAwithAddon	Enable/Disable Symbology
UPCEwithAddon	Enable/Disable Symbology	
Barcode Options	CodaBar_NoStartStopChars	
	ReverseDirection	
	UPCE_as_UPCA	
	EAN8_as_EAN13	
	UPCE_as_EAN13	
	ReturnCheckDigit	
	VerifyCheckDigit	
	UPCA_as_EAN13	
	I2of5_VerifyCheckDigit	
	Code39_VerifyCheckDigit	
	I2of5_ReturnCheckDigit	
	Code39_ReturnCheckDigit	
	UPCE_ReturnCheckDigit	
	UPCA_ReturnCheckDigit	
EAN8_ReturnCheckDigit		

오류! 스타일이 정의되어 있지 않습니다.

	EAN13_ReturnCheckDigit	
Scan Options	Scan Angle	Narrow/Wide
	Filter	Normal/High
	Time Out	100..10000msec
	Minimum Barcode Length	2..36
	Security Level	1..4
System	Memory Status	# of stored barcode, amount of remaining memory
	Sleep Timeout	1sec..10sec
	Date & Time	YYYY:MM:DD, HH:MM:SS
	Battery	% left
	Version	FW version. Serial Number

LED Status

LED Color	Status
Green	<ul style="list-style-type: none"> ● Successful Reading ● USB is connected and battery is fully charged
Yellow	<ul style="list-style-type: none"> ● Low battery
Red	<ul style="list-style-type: none"> ● No reading ● Empty battery

Synchronization

KTSync has two major functions – Synchronization and Keyboard Emulation. AISOLUTION Synchronization provides data upload functions to any Windows XP application. Keyboard Emulator enters scanned data directly into any XP application programs as if it was manually typed on the keyboard. KTSync also provides the following additional functions:

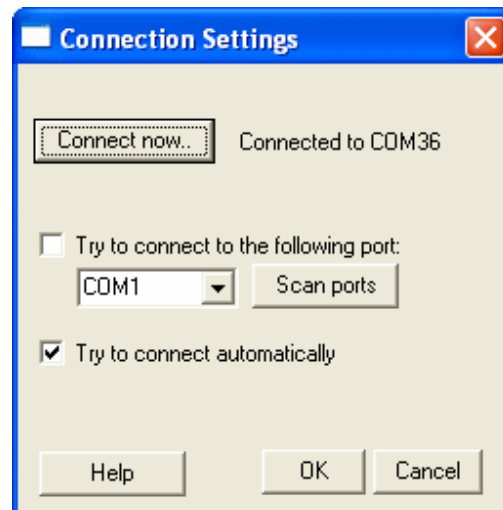
- Prefixes, suffixes add function which further eliminates the need for manual data entry
- Symbology and Scan Option selector
- Barcode Wedging.

You will see the following screen when launching KTSync application.



Connection Settings

The user can manually configure the connection with the PC by using the "Connection Settings" option. Please check the "Try to connect automatically" option if you desire to set up the connection between your KDC100 and Windows XP automatically.



오류! 스타일이 정의되어 있지 않습니다.

Synchronization

The AISOLUTION KDC100 provides several synchronization options with hosts such as PC, PDA and Cellphone. The standard package includes the software for Windows XP synchronization. If you need cellphone or PDA integration, please contact your local representative. The user can configure various Synchronization and Keyboard Emulation function in the “Synchronization Settings” option.

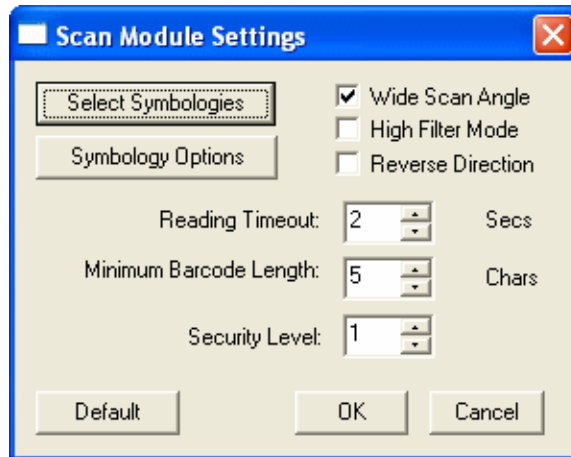
The screenshot shows the "Synchronization Settings" dialog box with the following configuration:

- Select destination of data:**
 - Default file: C:\myData
 - User defined file: (empty)
 - Active window
 - Notepad
 - Microsoft Excel
 - Select from currently running application: My Computer
- Select Synchronization Options:**
 - Clear KDC100 memory after synchronization
 - Synchronize newly read data after connection
 - Automatically synchronize after connection
- Timing:**
 - Polling Time: 10000 msec
 - Delays between Barcodes: 50 msec
 - Delays between Characters: 1 msec
- Advanced Options:**
 - Attach timestamp
 - Attach barcode type
 - Prefix: (empty)
 - Suffix: \r
- Data Format:**
 - Order of Data: <Type> <Data> <Timestamp>
 - Delimiter: Semicolon

Buttons: OK, Cancel

Barcode Selection

The user can configure barcode options in the Scan Module Settings menu.



CAUTION: Changes or modifications not expressly approved by the manufacturer responsible for compliance could void the user's authority to operate the equipment

WARNING

This device complies with part 15 of the FCC Rules. Operation is subject to the following two conditions: (1) This device may not cause harmful interference, and (2) this device must accept any interference received, including interference that may cause undesired operation.

INFORMATION TO USER:

This equipment has been tested and found to comply with the limit of a Class B digital device, pursuant to Part 15 of the FCC Rules. These limits are designed to provide reasonable protection against harmful interference in a residential installation. This equipment generates, uses and can radiate radio frequency energy and, if not installed and used in accordance with the instructions, may cause harmful interference to radio communications. However, there is no guarantee that interference will not occur in a particular installation; if this equipment does cause harmful interference to radio or television reception, which can be determined by turning the equipment off and on, the user is encouraged to try to correct the interference by one or more of the following measures:

1. Reorient / Relocate the receiving antenna.
2. Increase the separation between the equipment and receiver.
3. Connect the equipment into an outlet on a circuit different from that to which the receiver is connected.
4. Consult the dealer or an experienced radio/TV technician for help