

User's Guide

AlphaCam Plus

2. Minimum System Requirements

AlphaCam plus

- Universal Serial Bus (USB) port
- Windows 98 , Windows 98 SE, , and Millennium edition
- An Internet Service Provider (ISP)
- Pentium 233 MHz MMX or faster
- 64 MB RAM of Memory
- 165 MB of available hard disk drive space available
- CD-ROM drive
- LAN card or 56K bps model (for video conferencing)
- 800 x 600 pixel resolution display
- 16-bit color display
- Windows compatible sound card
- Speakers
- Microphone

3. Packing Contents

AlphaCam plus

1. Hardware



fig 3-1

Camera

CD ROM

Manual

2. Software Applications

- Software SHELL program
- PowerView
- WatchEye
- Microsoft^(R) NetMeeting^(TM)
- Arcsoft PhotoImpression^(TM) 2000
- Video Encoder 7.0

4. Prior to Installation

AlphaCam plus



Insert the SOFTWARE CD into the CD-ROM drive BEFORE connecting the camera to your computer. If the camera was connected before software installation, CANCEL any action and insert the SOFTWARE CD first.



Check system requirements prior to installation. Make sure you meet the minimum system requirements

5. Software Installation (All Operating Systems)

AlphaCam plus

- 1) Insert the SOFTWARE CD into the CD-ROM drive. The software will automatically load. If the software does not load automatically, follow these steps.
 1. Go to the task bar and click on '**Start**'
 2. Click on '**Run**'
 3. Type **d:\autoplay.exe** and press the '**Enter**' key (d:\ is the drive designated to your CD-ROM drive)

- 2) Welcome to the AlphaCam USB Setup program. Follow the on screen prompts to install the AlphaCam software.

Click '**Next**' to continue.

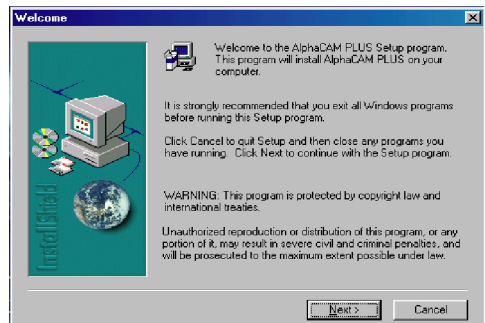


Fig 5-1

3) Software will begin installation.

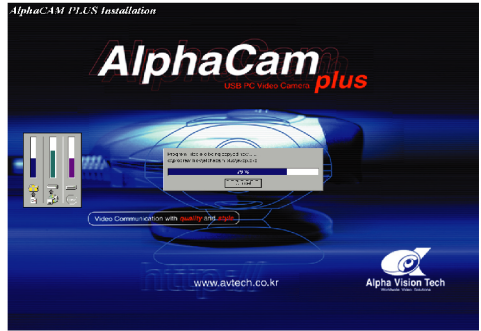


Fig 5-2

4) The software has been installed successfully. It is now ready to install Arcsoft PhotoImpression(TM) 2000. Make sure the box labeled *PhotoImpression Installation* is checked.

Click '**Finish**' to begin Installation.

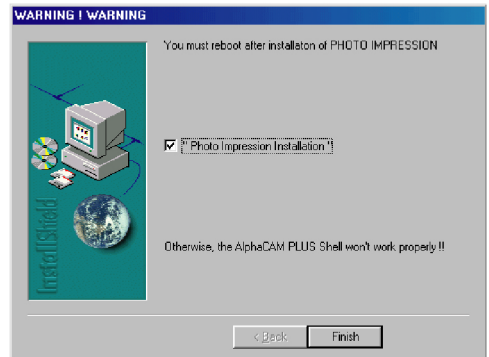


Fig 5-3