

## 14.4. Starting WatchEye

1. Select the **'Settings'** tab and set all the controls and settings accordingly.
2. Point the camera at your target.
3. Click on the **'Start'** button.
4. WatchEye will begin monitoring in 10 seconds. This will give you time to leave the proximity of the camera view.
5. Anytime there is motion detected, WatchEye will check its sensitivity setting. If the motion exceeds the sensitivity setting, WatchEye will save detected images on your HDD and email or call you if those options have been activated.
6. To stop WatchEye at any time, click on the flashing **'Stop'** button.

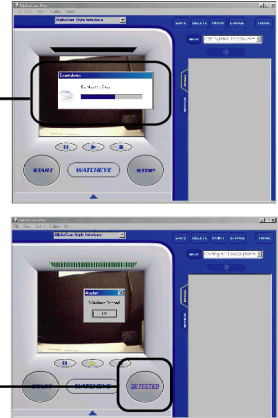


Fig 14-4-1

## 14.5. Watching Captured files

1. To access WatchEye snapshots, click on the **'Play'** button to open *WatchEye Slide Show*.
2. Choose a directory you wish to view.
3. Once you have clicked on the directory, a list of files will appear. These files are captured images. Select the first image.
4. Click on the **'Start'** button and the images will playback automatically.
5. To stop or pause the viewer, click on the **'Stop'** button.
6. When you have finished viewing the snapshots, click on **'Close'** to exit *WatchEye Slide Show*.

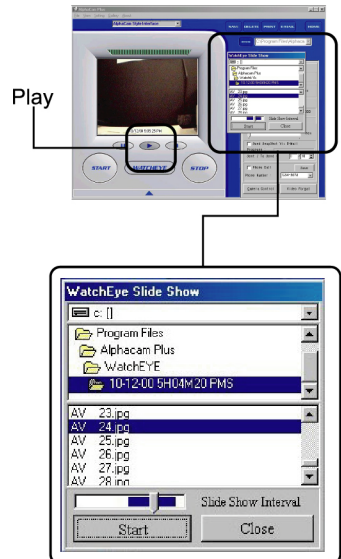


Fig 14-5-1

## 15. Arcsoft PhotoImpression™ 2000

AlphaCam plus

Arcsoft PhotoImpression™ 2000 is an easy-to-use photo editing program for everyone. With PhotoImpression™, users can easily edit, enhance, retouch or add special effects to any image with just a couple of clicks. PhotoImpression™ also offers creative solutions for making greeting cards and calendars and comes packed with frames, borders, stamps and shapes for enhancing any photo. PhotoImpression™ also offers a variety of printing options as well as entertainment functionality for creating *Photo Fantasies*.



Fig 15-1

- Easily add text to any image
- Instantly remove "red eye"
- Includes powerful editing, retouching, and special effect tools
- Easily create calendars and greeting cards
- Print multiple images on a single page (thumbnail printing)
- Multiple undo and redo
- Photo album manager
- Compatible with TWAIN devices
- And much much more...