

## 15.1. The five simple steps to using Photolmpression 2000!



Fig 15-1-1

This button lets you get photos from different sources. These include files on your computer, TWAIN compatible cameras, and scanners.

This function will let you edit the photo you've opened. Some functions include layer manipulation, retouching, text effects, image enhancement, select and crop, and much much more.

After you've edited your photo, you can use 'Create' function to add a border or frame, import a cookie cutter effect to your photos, create a calendar, and even customize your own greeting card.

Once you're satisfied with your work, you can save your work onto the local hard drive, or directly send it to an e-mail address.

Finally, you can print your work with this outstanding print management feature. This feature lets you print a single image, multiple images, thumbnails, and even sticker pictures! (Sticker paper required for sticker picture printing).

### 1. Get Picture

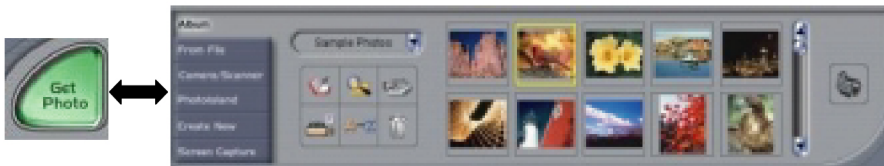


Fig 15-1-2

Before you can start any editing, you have to first get a photo and load it into Photolmpression. By clicking on the **'Get Photo'** icon, a menu will appear that allows you to load images from a number of sources.

- Album:** Load images from your digital photo album.
- From File:** Load any compatible picture files from any directories on your computer.
- Camera/Scanners:** Capture / load images using TWAIN compatible devices such as PC video camera, scanners, digital cameras, etc...
- Create New:** Create your own artwork from a blank page.
- Screen Capture:** Grab images directly from your computer screen. This is useful for turning text documents into a graphic file.

## 2. Edit

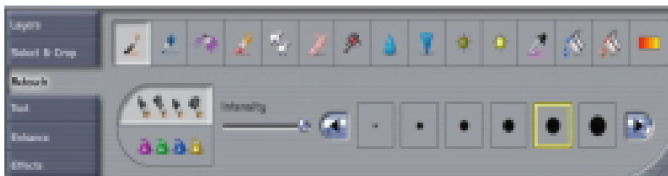


Fig 15-1-3

Once you have the images loaded, you can use a variety of editing options to enhance your image.

- Layer:** Add, delete, and fade out multiple layers. This function is excellent for combining two different images together.
- Select and Crop:** Select an area to copy and paste it as a new layer.
- Retouch:** Edit your images with features such as paintbrush, pen, eraser, spray can, fill, brightness adjust, clone, red-eye reduction, and many more.
- Text:** Add captions and stylized text to any images easily
- Enhance:** Adjust contrast, color balance, image sharpness, and many other image enhancement functions.
- Effects:** Add special effects to your images with mosaic, swirl, cone, wave and many more.

## 3. Create



Fig 15-1-4

After perfecting your image, you can use the same image to create calendars, greeting cards, and more.

- Frames and Edges:** Add a frame or a stylized edge to an image.
- Cookie Cutter:** Cut out pre-defined shapes using provided templates.
- Calendar:** Create calendars using your image and a pre-generated calendar template.
- Photo Fantasy:** Paste your face onto a basketball player, the Statue of Liberty, or any other figures. You can instantly become anyone you've ever dreamed of.
- Cool Software:** Add commonly used software links onto this software management program.