

6. Arcsoft PhotoImpression(™) 2000 Installation

AlphaCam plus

- 1) This is the main installation page for Arcsoft PhotoImpression 2000. From here you can install, register product, view a product catalog, access an order form, or exit the software installation.

Click on **'Install'** to begin PhotoImpression installation.

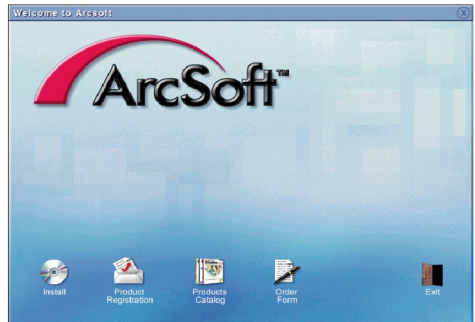


Fig 6-1

- 2) Please read all the information on the screen. Follow all the instructions.

To begin Installation, click **'Next'**.

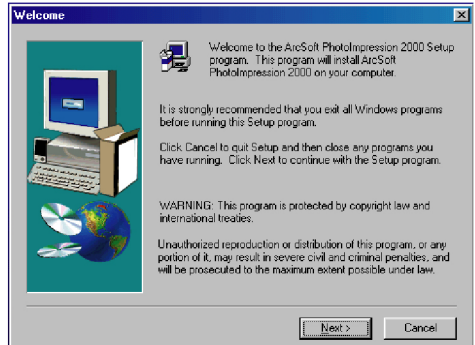


Fig 6-2

- 3) Please read through the License Agreement. To proceed, you must agree with the license agreement.

Click **'Yes'** to continue.

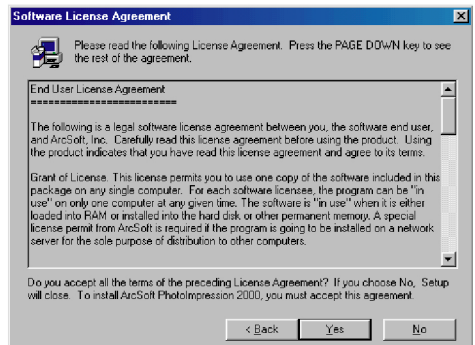


Fig 6-3

- 4) Setup will now install the software into a designated directory. If you decide to install the software into another directory, click on the **'Browse'** button and designate another directory. Otherwise, click **'Next'** to proceed.

Click **'Next'** to continue.

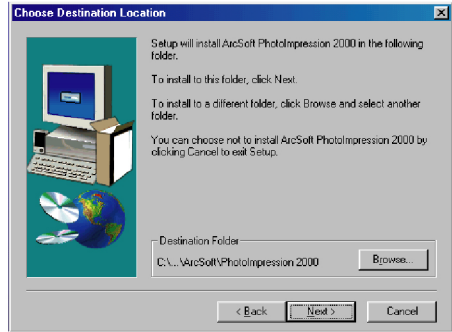


Fig 6-4

- 5) Select the component you wish to install.

Click **'Next'** to continue.

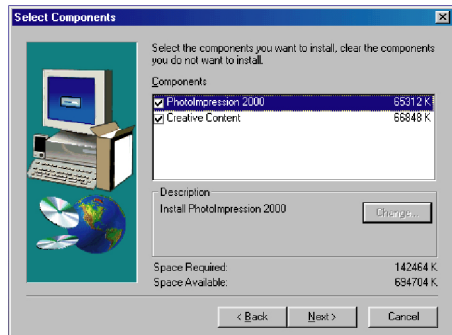


Fig 6-5

- 6) Designate a name for the program folder. By default, it is ArcSoft PhotoImpression 2000. You can change the name if you desire.

Click **'Next'** to continue.

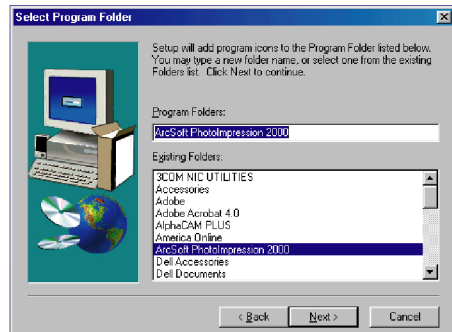


Fig 6-6

7) The software should begin installation.

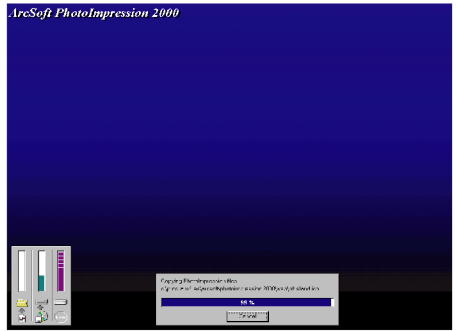


Fig 6-7

8) The software has been successfully installed. Click on Finish to exit.

Click 'Finish' to exit.

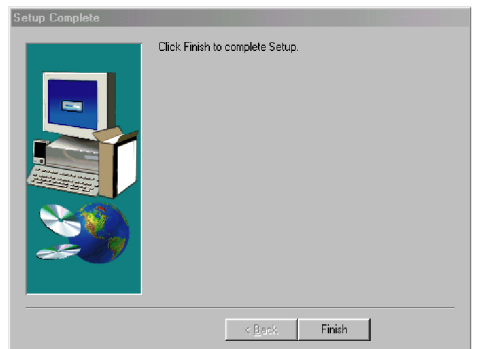


Fig 6-8

At this point, remove the CD from the CD-ROM drive and proceed with CAMERA INSTALLATION.