

7. Camera Installation(Windows 98)

AlphaCam plus

After the software installation is complete, connect the camera's USB cord to the USB port on your computer. The computer will automatically detect an unknown device. This will prompt the *Windows 98 Add New Hardware Wizard* to appear on your screen. Follow the prompts on the screen to complete installation.

- 1) Plugging in the camera will prompt an *USB Device* window to appear.

Click **'Next'** to continue.

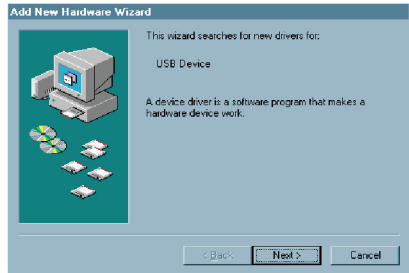


Fig 7-1

- 2) Select *Search for the best driver for your device. (Recommended)*.

Click **'Next'** to continue.



Fig 7-2

- 3) Windows will now search for new drivers in its driver database.

Make sure to:

1. Select the box *Specify a location*
2. Specify the location as: **c:\windows\temp\usbdriver1**

Click **'Next'** to continue.



Fig 7-3

- 4) Windows has found the best driver and is ready to install the AVTECH PC Camera. Make sure the location of driver matches the specified location.

Click **'Next'** to continue.



Fig 7-4

CAUTION In the event that there is a driver conflict during installation, it is recommended that you keep the files.

Click **'Yes'** to continue.



Fig 7-5

CAUTION Certain computers may require additional Windows 98 installation files. Whenever this prompt appears, insert the WINDOWS 98 CD-ROM into your CD-ROM drive and specify the location as: **d:\win98** (d:\ is the drive designated to your CD-ROM drive) (Fig.7-6)

Click **'OK'** to continue.

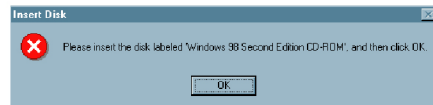


Fig 7-6

- 5) Camera installation is now complete. Click **'Finish'** to continue. (Fig. 7-7)

CAUTION

Windows 98 (excluding 98SE) users must set up MS Outlook Express™ and configure its general settings in order to use the AlphaCam Plus' email program before using the software.

Configuration Instructions:

1. Set up MS Outlook Express...
2. After a successful set up, restart your computer.
3. Begin MS Outlook Express again.
4. On the drop-down menu, select **'Tools' > 'Options...'**
5. Make sure the **'General'** tab is selected.
6. Check **'Make Outlook Express™ my default Simple MAPI client'** box.
7. Click **'OK'**. Email configuration is finished.

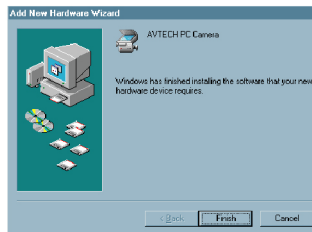
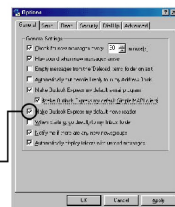


Fig 7-7



8. Camera Installation (Windows ME)

- 1) Plugging in the camera will prompt an Unknown Device window to appear. Select '*Specify the location of the driver (Advanced)*'.

Click '**Next**' to continue.



Fig 8-1

- 2) Windows will now search the hard drive for the best drivers. Please select '*Search for the best driver for your device*'. Make sure to check the box '*Specify a Location*' and that the location is **c:\windows\tempusbdriver**

Click '**Next**' to continue.

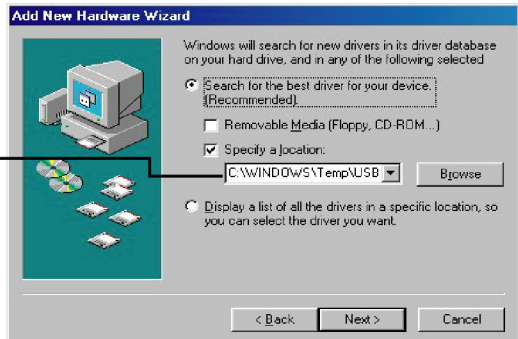


Fig 8-2

- 3) Windows is now ready to install the best driver for this device. Make sure the '*Location of driver*' is listed as **c:\windows\tempusbdriver\cam.inf**

Click '**Next**' to continue.



Fig 8-3