



In the event that there is a driver conflict during installation, it is recommended that you keep the files.

Click 'Yes' to continue.

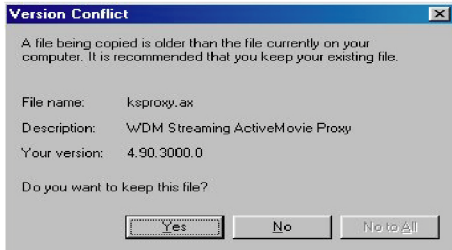


Fig 8-4



Certain computers may require additional Windows ME installation files. Whenever this prompt appears, insert the WINDOWS ME CD-ROM into your CD-ROM drive and specify the location as:

**d:\win9x**

(d:\ is the drive designated to your CD-ROM drive.)

Click 'OK' to continue.



Fig 8-5

- 4) Windows has finished installing the drivers for *AlphaCam Plus*.

Click 'Finish' to continue.

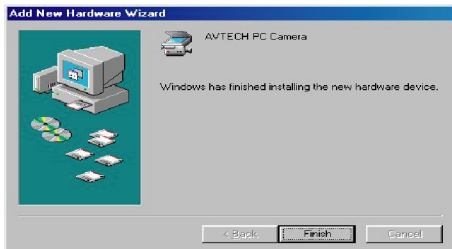


Fig 8-6

- 5) Please restart the computer in order to load the new drivers.

Click 'Yes' to continue.



Fig 8-7

# 9. Camera Installation(Windows 2000)

- 1) Plugging in the camera will prompt a 'New Hardware Wizard'to appear.

Click 'Next' to continue.



Fig 9-1

- 2) Windows will now search on the hard drive for the best drivers. Please select 'Search for the best driver for your device (Recommended)'. A line points from this text to the 'Recommended' radio button in the screenshot below.

Click 'Next' to continue.

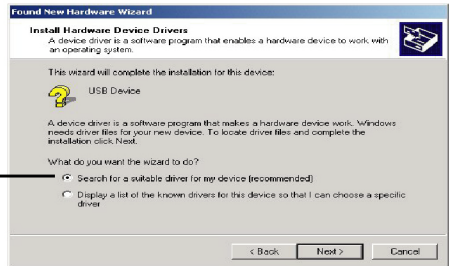


Fig 9-2

- 3) Windows will search a location for the device driver. Make sure the only box with a check is 'Specify a location'. A line points from this text to the 'Specify a location' checkbox in the screenshot below.

Click 'Next' to continue.



Fig 9-3

- 4) Make sure to 'Copy Manufacturer's File From': A line points from this text to the 'Copy manufacturer's files from:' label in the screenshot below.

c:\winnt\temp\usbdrivers\

Click 'OK' to continue.



Fig 9-4