

14. WatchEye

AlphaCam plus

WatchEye is a personal surveillance software program that monitors your computer area while you're away. If anyone enters your space, WatchEye secretly snap pictures of the intruder and emails them to you. You can even set WatchEye to call you at the first sign of trouble!

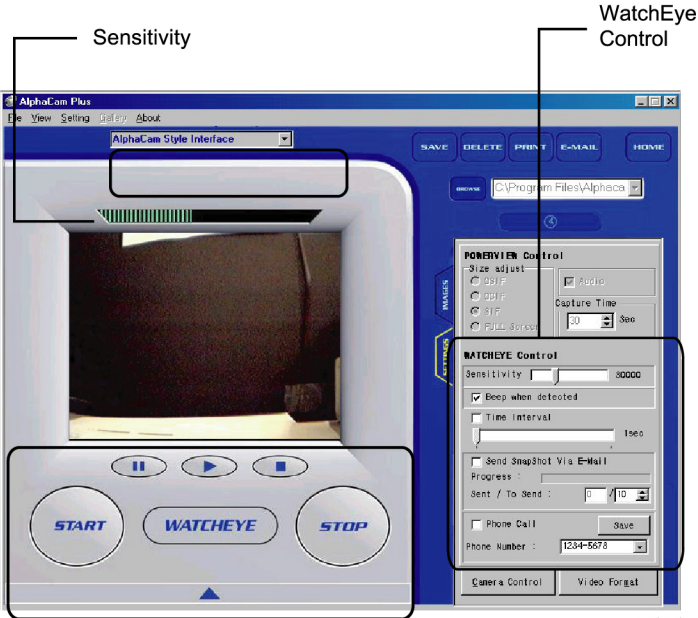


Fig 14-1

Watcheye Action Buttons

14.1. Sensitivity



Fig 14-1-1

WatchEye's sensitivity bar displays the amount of motion detected in the monitored area.

14.2. WatchEye Control



Fig 14-2-1

Sensitivity Level

You can adjust the motion sensitivity of the camera by moving the slider control left and right. As you move the bar further to the left, the sensitivity of the motion detector will decrease. As you move the bar further to the right, the sensitivity will increase. Hence, less motion will be necessary to activate the WatchEye program.

Beep When Detected

Once motion is detected, a warning will sound on the computer speaker. Make sure the speaker is connected to the computer.

Using Time Interval (1 Sec/Frame)

WatchEye can take snapshots in time intervals. Set the time by increasing or decreasing the value.

Send Snapshot Via E-mail

Select this option to send a captured snapshot to an email address. Fill in the appropriate information when the *E-Mail Configuration* window appears. To change the server information, consult with your Internet Service Provider (ISP). Click **'Close'** to exit *E-mail configuration*.

Setup Instructions:

1. Check *Send Snapshot Via E-Mail* box.
2. *E-Mail Configuration* window appears.
3. Click **'Option'**.
4. Click **'Disconnect'**.
5. Enter your server information. You may need to consult with your Internet Service Provider (ISP) for necessary information.
6. Enter your *Login ID* if necessary.
7. Click **'Save Server and ID'**.
8. Click **'Close'** to exit *E-Mail Configuration*.

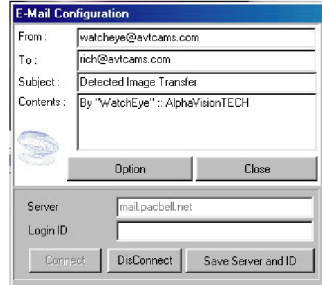


Fig 14-2-2

Notify via Phone Call

Select this option to enable the calling feature in WatchEye. Designate a phone number in the text box and press **'Save'**. Upon motion detection, WatchEye will attempt to dial the phone number.

Note: Your modem must be connected to a phone line in order for WatchEye to dial out.



Fig 14-2-3

14.3. WatchEye Action Buttons



After adjusting the WatchEye settings, click on the **'Start'** button to activate WatchEye. WatchEye will automatically start after 10 seconds. This will give you time to leave the proximity of the camera view.



Click the **'Stop'** button to end motion detection.



Click on this button to access the slideshow.