

## Installation Manual

This module board is to be installed only **by the professional line operator** and used only for car audio produced by ALPINE ELECTRONICS, INC.. When this Bluetooth Module Board is installed in the Car Audio, we shall consider the following points;

1. Since “96-09386Z98”owns its FCC ID/IC Number, we shall affix an exterior label on the outside of the product if the FCC ID is not visible. The exterior label shall use wording such as either ”Contains Transmitter Module Board FCC ID: A269ZUA128 / IC: 700B-09386Z” or “Contains FCC ID: A269ZUA128 / IC: 700B-09386Z”.
2. “96-09386Z98” complies with requirements of sub-sections 15.19(a)(3) in FCC Rules Part 15 Subpart C. The manual statement 15.19 (a)(3) is included User Guide of the product.
3. “96-09386Z98” is to be installed only by the professional line operator as shown in following pictures. (Fig 1 and 2)

Fig 1. Front side of “96-09386Z98”

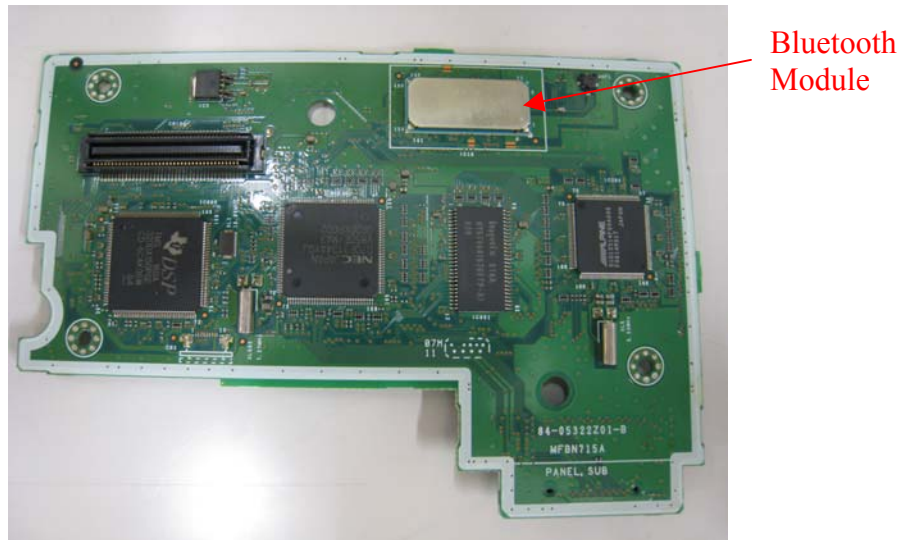
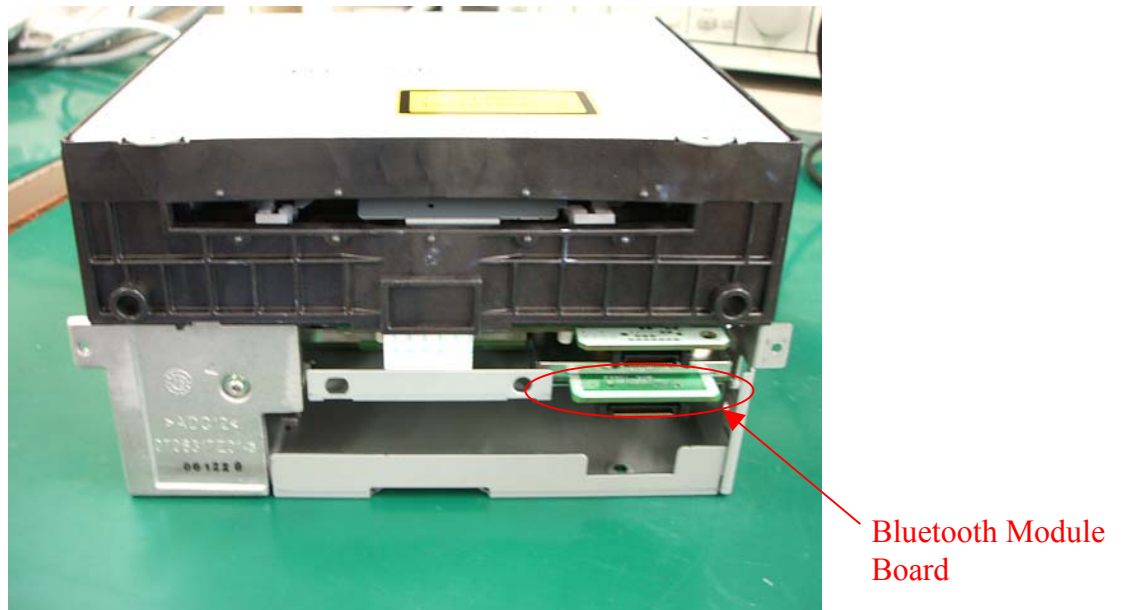


Fig 2. Front view of “96-09386Z98” to be equipped for a Car Audio (example)



***There isn't an official user manual for this Bluetooth Module Board (96-09386Z98).***

***However, user manuals of final product, which have Bluetooth module board, must contain notification corresponding to the following description.***

Changes or modifications not expressly approved by the party responsible for compliance could void the user's authority to operate the equipment.

(This device complies with Part 15 of FCC Rules and RSS-Gen of IC Rules.)  
Operation is subject to the following two conditions: (1) this device may not cause interference, and (2) this device must accept any interference, including interference that may cause undesired operation of this device.

This transmitter must not be co-located or operated in conjunction with any other antenna or transmitter.

This equipment complies with FCC/IC radiation exposure limits set forth for uncontrolled equipment and meets the FCC radio frequency (RF) Exposure Guidelines in Supplement C to OET65 and RSS-102 of the IC radio frequency (RF) Exposure rules. This equipment has very low levels of RF energy that it deemed to comply without maximum permissive exposure evaluation (MPE). But it is desirable that it should be installed and operated with at least 20cm and more between the radiator and person's body (excluding extremities: hands, wrists, feet and ankles).