

Installation Manual

This module is to be installed only by the professional line operator and used only with a Bluetooth Module for car audio produced by ALPINE ELECTRONICS, INC.. When this Bluetooth Module is installed in the Car Audio, we shall consider the following points;

1. Since “**G500-7 BT PWB**” owns its FCC ID/IC Number, we shall affix an exterior label on the product if the FCC ID is not visible. The exterior label shall use wording such as either ”Contains Transmitter Module FCC ID: A269ZUA140 / IC: 700B-G5007” or “Contains FCC ID: A269ZUA140/ IC: 700B-G5007”.
2. “**G500-7 BT PWB**” complies with requirements of sub-sections 15.19(a)(3) in FCC Rules Part 15 Subpart C. The manual statement 15.19 (a)(3) is included User Guide of the product.
3. “**G500-7 BT PWB**” is to be installed only by the professional line operator as shown in following pictures. (Fig1, 2, 3, 4)
4. “**G500-7 BT PWB**” is built into the product.
Because FCC ID of the module is not seen, FCC ID is described to the product exterior label.
The following wordings are used for external label. “Contains FCC ID: A269ZUA140/ IC: 700B-G5007”. (Fig5)



Fig 1. Top View of Bluetooth Transmitter “UGZZC-B###”

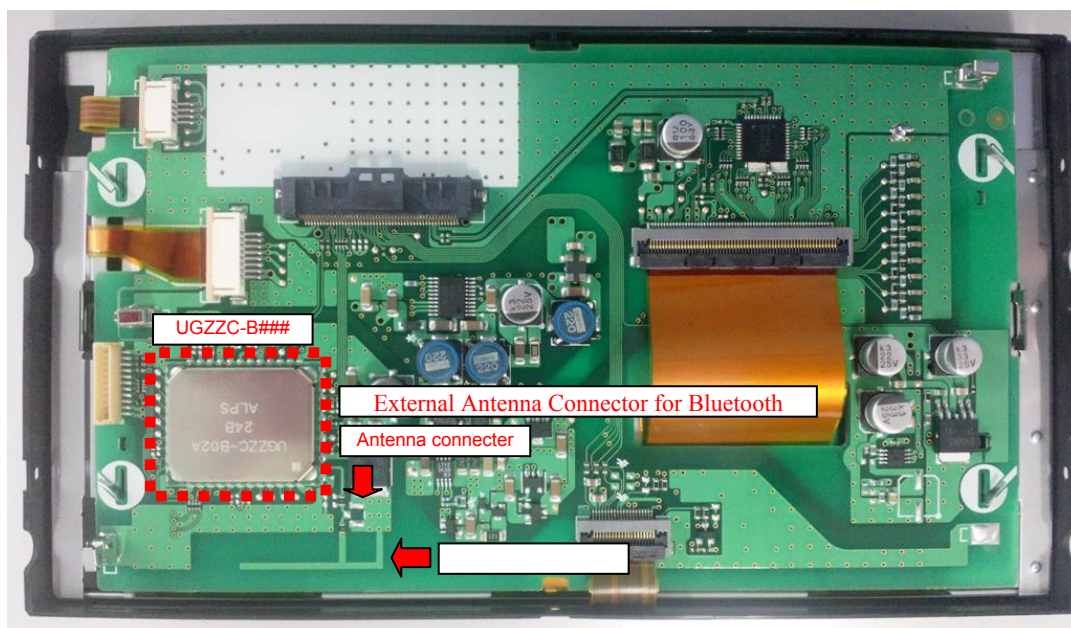


Fig 2. Reverse View of Display unit that installed Bluetooth Transmitter “UGZZC-B###”



Fig 3. Front View of Display unit that installed Bluetooth Transmitter “UGZZC-B###”

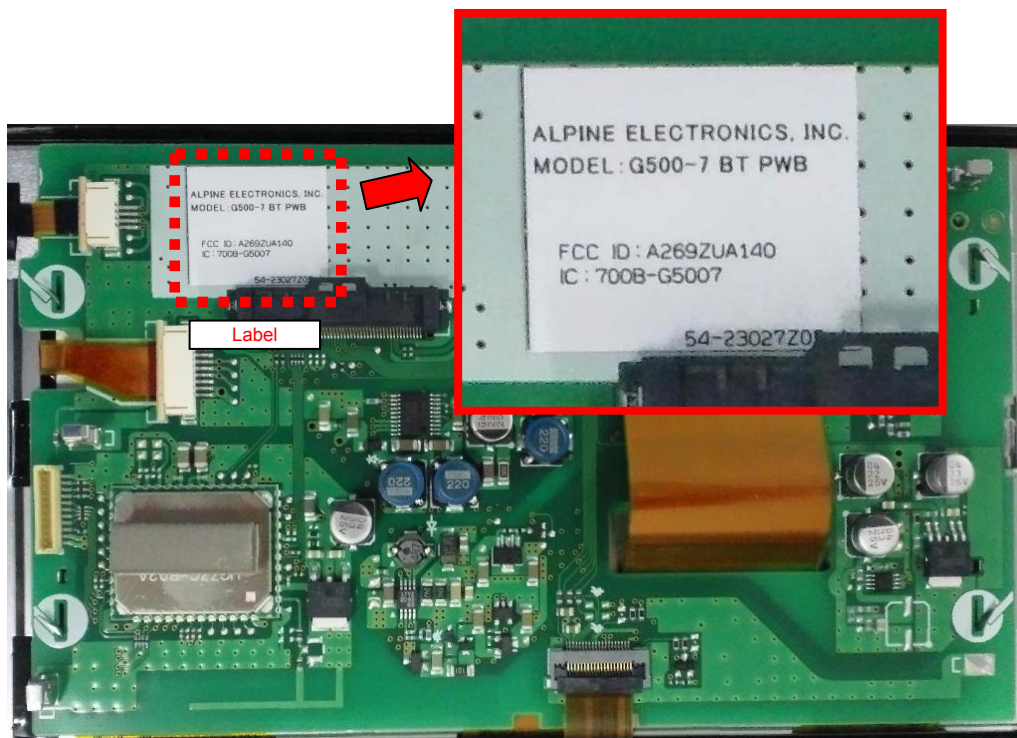


Fig 4. Reverse View of Display unit that installed Bluetooth Module Label”



Fig 5. Bottom View of Product that installed Product Label

There isn't an official user manual for this Bluetooth Module "G500-7 BT PWB". However, user manuals of final product, which have the module, must contain notification corresponding to the following description.

Changes or modifications not expressly approved by the party responsible for compliance could void the user's authority to operate the equipment.

This device complies with Part 15 of FCC Rules and RSS-Gen of IC Rules. Operation is subject to the following two conditions: (1) this device may not cause interference, and (2) this device must accept any interference, including interference that may cause undesired operation of this device.

Le présent appareil est conforme aux la partie 15 des règles de la FCC et CNR d'Industrie Canada applicables aux appareils radio exempts de licence. L'exploitation est autorisée aux deux conditions suivantes : (1) l'appareil ne doit pas produire de brouillage, et (2) l'utilisateur de l'appareil doit accepter tout brouillage radioélectrique subi, même si le brouillage est susceptible d'en compromettre le fonctionnement.

This transmitter must not be co-located or operated in conjunction with any other antenna or transmitter.

This equipment complies with FCC/IC radiation exposure limits set forth for uncontrolled environment and meets the FCC radio frequency (RF) Exposure Guidelines in Supplement C to OET65 and RSS-102 of the IC radio frequency (RF) Exposure rules. This equipment has very low levels of RF energy that it deemed to comply without maximum permissive exposure evaluation (MPE). But it is desirable that it should be installed and operated keeping the radiator at least 20cm or more away from person's body (excluding extremities: hands, wrists, feet and ankles).

Cet équipement est conforme aux limites d'exposition aux rayonnements énoncées pour un environnement non contrôlé et respecte les règles les radioélectriques (RF) de la FCC lignes directrices d'exposition dans le Supplément C à OET65 et d'exposition aux fréquences radioélectriques (RF) CNR-102 de l'IC. Cet équipement émet une énergie RF très faible qui est considérée conforme sans évaluation de l'exposition maximale autorisée. Cependant, cet équipement doit être installé et utilisé en gardant une distance de 20 cm ou plus entre le dispositif rayonnant et le corps (à l'exception des extrémités : mains, poignets, pieds et chevilles).