

# ANTOP

Leading the future of the global antenna industry

ANTCLOUD MV-9818 INTEGRATED Wi-Fi/UHF/VHF/FM/AM  
SYETEM

USER AND INSTALLATION MANUAL



## MV-9818 USER AND INSTALLATION MANUAL

### FCC statements:

This device complies with part 15 of the FCC Rules. Operation is subject to the following two conditions: (1) This device may not cause harmful interference, and (2) this device must accept any interference received, including interference that may cause undesired operation.

### 15.21 Information to user.

**CAUTION:** Any changes or modifications not expressly approved by the grantee of this device could void the user's authority to operate the equipment.

### 15.105 Information to the user.

**Note:** This equipment has been tested and found to comply with the limits for a Class B digital device, pursuant to part 15 of the FCC Rules. These limits are designed to provide reasonable protection against harmful interference in a residential installation. This equipment generates, uses and can radiate radio frequency energy and, if not installed and used in accordance with the instructions, may cause harmful interference to radio communications. However, there is no guarantee that interference will not occur in a particular installation. If this equipment does cause harmful interference to radio or television reception, which can be determined by turning the equipment off and on, the user is encouraged to try to correct the interference by one or more of the following measures:

- Reorient or relocate the receiving antenna.
- Increase the separation between the equipment and receiver.
- Connect the equipment into an outlet on a circuit different from that to which the receiver is connected.
- Consult the dealer or an experienced radio/TV technician for help.

### FCC Radiation Exposure Statement:

To comply with FCC RF exposure compliance requirements, the antennas used for this transmitter must be installed to provide a separation distance of at least 20 cm from all persons and must not be co-located or operating in conjunction with any other antenna or transmitter.



## 1.PRODUCT DESCRIPTION

MV-9818 through clever design and reasonable layout, putting the Wi-Fi repeater and television broadcast antenna in a casing, realized the surfing the internet, watching TV and listening to the radio functions of perfect fusion.

Wi-Fi repeater part of MV-9818 is the new integrated system for surfing the internet with Wi-Fi APs .Inside the ASA radome there are two Wi-Fi antennas, a specifically constructed router with dedicated software to operate, allow you to have a simple and convenient high-speed internet connection in a few minutes: simply setting some parameters and you can connect in Wi-Fi any internet devices (iPhone, smartphone, iPad, tablet, PC...) to the Wi-Fi network.

**Additionally**,in order to meet the needs of watching TV and listening to the radio, MV-9818 has a special designed antenna for both analog and digital terrestrial TV broadcasting reception. It can receive all the TV signals of your area in VHF and UHF band, as well as the FM/AM radio signal. It is the best solution for reception and digital portable TV reception.This antenna is an active antenna powered through DC power.

## **2. INSTALLATION**

- The installation of the MV-9818 near or above a flat metal surface may result in significant reduction of the Wi-Fi signal strength.
- Do not mount the MV-9818 near metal obstructions that may interfere with the Wi-Fi signal.

### **Electric connections**

For the proper functioning of MV-9818, simply connect the antenna to a 12/24 Vdc power supply cable (not provided) according to the following guidelines.

Connect the red (positive) and the black wire (negative) coming out from the base of MV-9818 to the battery through a red/black power cable. The connection can be made by soldering or with a clamp. It is advisable to have this procedure carried out by a technician.

**IMPORTANT: The polarity reversal on the power supply will burn the fuse.**

The power line (not supplied) which connects the two wires coming out from the base of MV-9818 must have cables with a cross section of 1.5 mm<sup>2</sup> by a length up to 10 m, and 2.5 mm<sup>2</sup> for longer lengths.

**WARNING:** in the power line, we recommend placing a switch upstream to avoid electricity consumption when the MV-9818 is not used.

**NOTE:** In order to receive the signal from the MV-9818 inside metal crafts, up to a maximum of four access points (according to your needs) must be placed inside the boat, which must be linked with a switch to the router inside the MV-9818 via an Ethernet network cable.

### 3. HOW TO USE the MV-9818

**NOTE : TV antenna can be used after connect the power supply, do not need to be set.**

There is a way to control the router by WEB .

**The following example is operating the router by the WEB:**

**Firstly**,set your computer's wireless network to obtain an IP address automatiacly,then power on the MV-9818,about one minute later,your portable computer will find a SSID named Antop\_\*\*\*\*\* (Fig below), connect it.

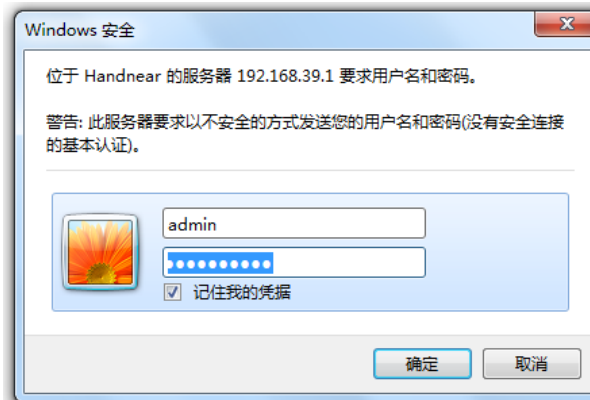


**Secondly**,open a Web browser and enter the address 192.168.39.1;the Web will pop up a dialogue table (Fig below),then enter:

Default user name:admin

Default password:admin

After your entering,then confirm it!

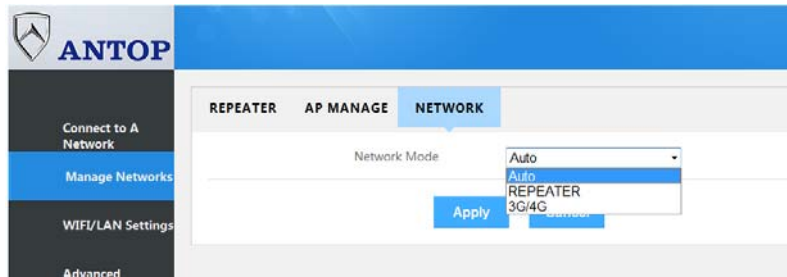


By the above operation,we have entered the router setting page(Fig below).On this page, we can set the parameters of the router.

**Now generally used parameters are introduced.**

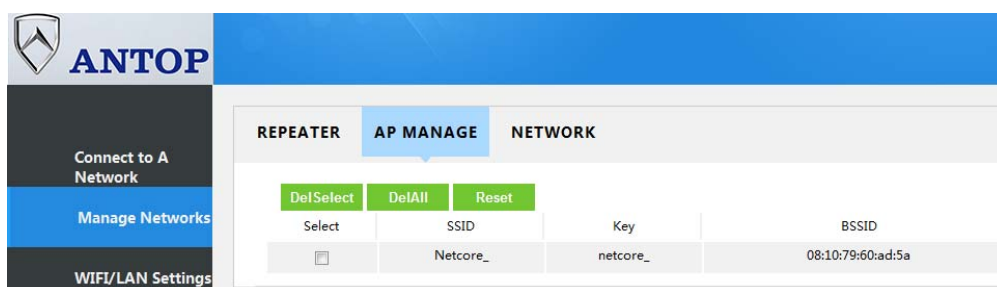
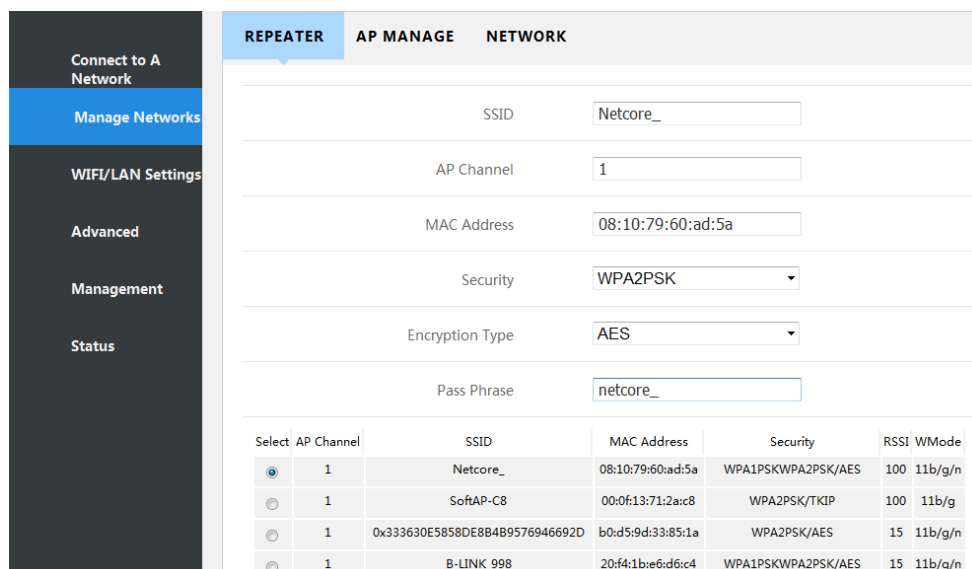
In the Manage Networks bar,we can set the network working mode.

**Repeater:** forced to work in the Wi-Fi mode.

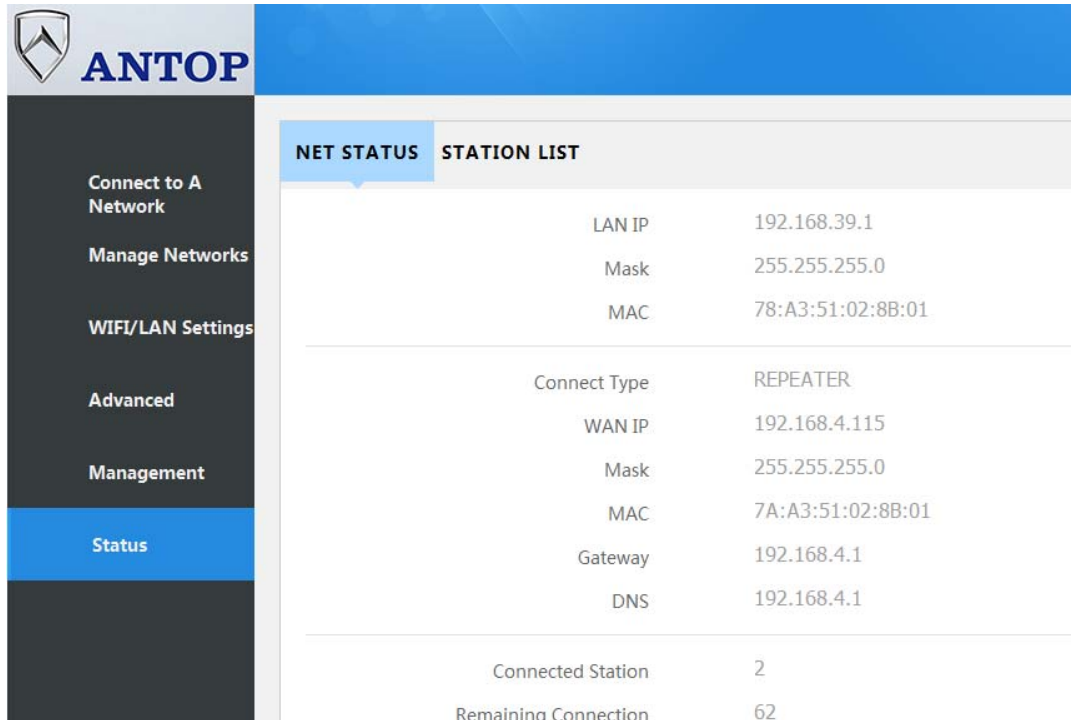


If you want to add a Wi-Fi connection external to the MV-9818 to share with the devices, click "REPEATER" and wait.

A list of available connections will be displayed. Click the name of the Wi-Fi connection required and enter the password for the Wi-Fi network selected,click APPLY to confirm,and wait a few minutes. The information of the Wi-Fi network you have chosen will appear in the AP MANAGE table (Five SSID,MAX.).



Connect the Status bar,the page will show the net status,connet type will show current working mode (REPEATER ,Fig below).



**ANTOP**

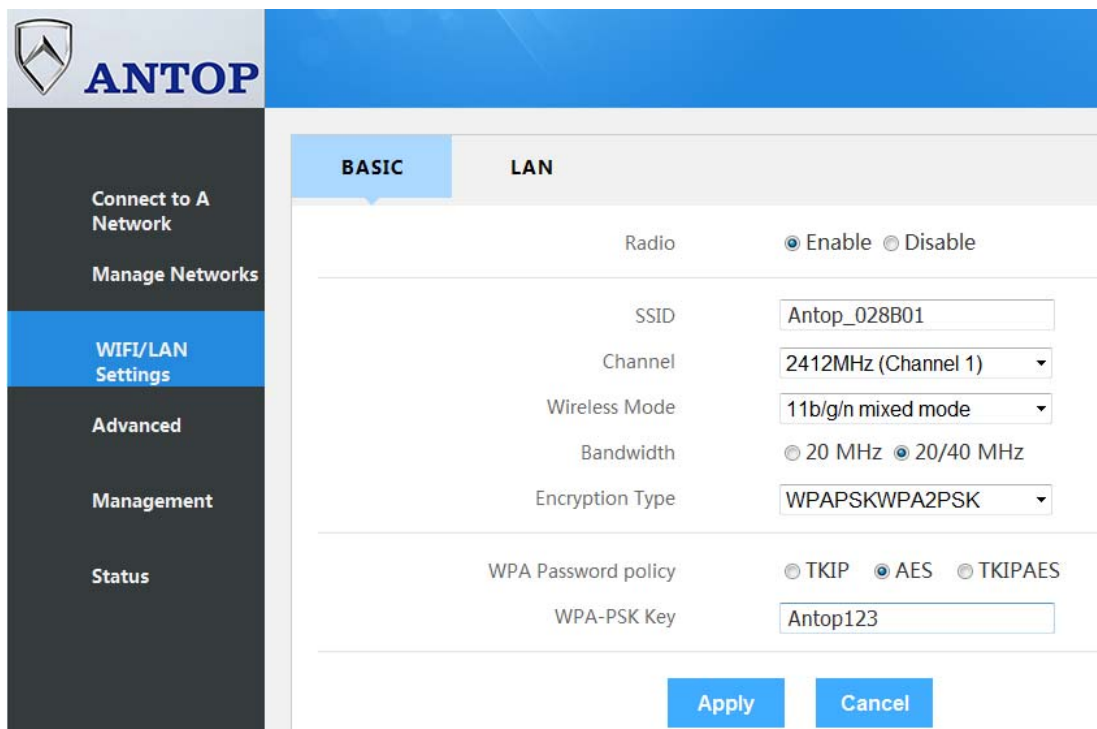
**NET STATUS**   **STATION LIST**

LAN IP	192.168.39.1
Mask	255.255.255.0
MAC	78:A3:51:02:8B:01
Connect Type	REPEATER
WAN IP	192.168.4.115
Mask	255.255.255.0
MAC	7A:A3:51:02:8B:01
Gateway	192.168.4.1
DNS	192.168.4.1
Connected Station	2
Remaining Connection	62

**Now you can enjoy your journey to the Internet!**

**Other basic settings are showing below:**

Wi-Fi basic settings:



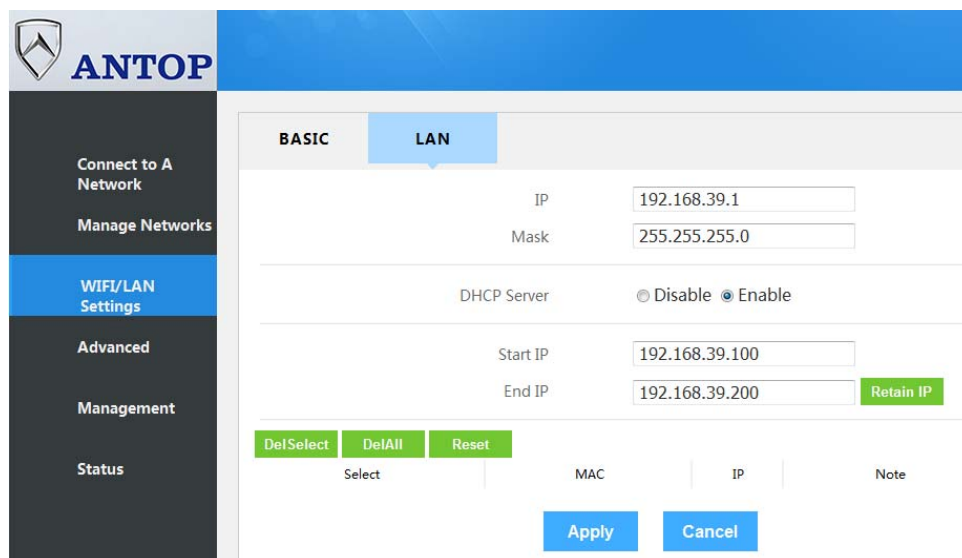
**ANTOP**

**BASIC**   **LAN**

Radio	<input checked="" type="radio"/> Enable <input type="radio"/> Disable
SSID	<input type="text" value="Antop_028B01"/>
Channel	<input type="text" value="2412MHz (Channel 1)"/>
Wireless Mode	<input type="text" value="11b/g/n mixed mode"/>
Bandwidth	<input type="radio"/> 20 MHz <input checked="" type="radio"/> 20/40 MHz
Encryption Type	<input type="text" value="WPAPSKWPA2PSK"/>
WPA Password policy	<input type="radio"/> TKIP <input checked="" type="radio"/> AES <input type="radio"/> TKIPAES
WPA-PSK Key	<input type="text" value="Antop123"/>

**Apply**   **Cancel**

### LAN settings:



**ANTOP**

Connect to A Network  
Manage Networks  
**WIFI/LAN Settings**  
Advanced  
Management  
Status

**BASIC LAN**

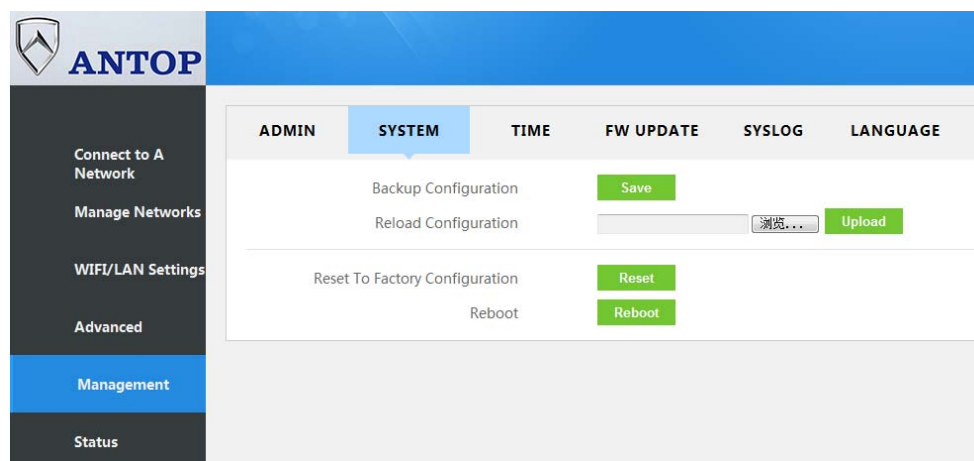
IP: 192.168.39.1  
Mask: 255.255.255.0

DHCP Server:  Disable  Enable

Start IP: 192.168.39.100  
End IP: 192.168.39.200

Select	MAC	IP	Note

### System reboot and reset to factory configuration:



**ANTOP**

Connect to A Network  
Manage Networks  
WIFI/LAN Settings  
Advanced  
**Management**  
Status

**ADMIN SYSTEM TIME FW UPDATE SYSLOG LANGUAGE**

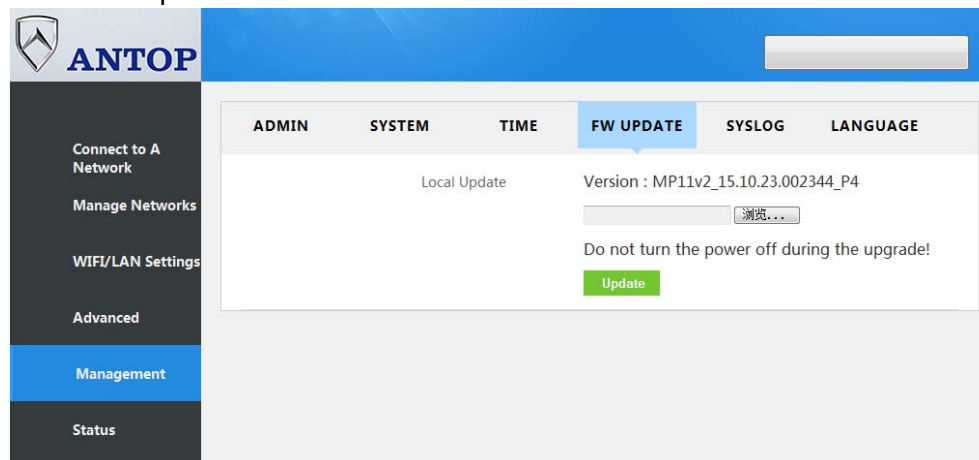
Backup Configuration

Reload Configuration

Reset To Factory Configuration

Reboot

### Firmware Update:



**ANTOP**

Connect to A Network  
Manage Networks  
WIFI/LAN Settings  
Advanced  
**Management**  
Status

**ADMIN SYSTEM TIME FW UPDATE SYSLOG LANGUAGE**

Local Update Version : MP11v2\_15.10.23.002344\_P4

Do not turn the power off during the upgrade!

Note: Product internal network interface is used for debugging only, it is covered by shell, users can not use it.