

! HOTLINE !

**Please check www.typhoon.de
or Handbuch/Manual/Manuale/Manuel**

E-mail: service@typhoon.de

Germany: 01806 80 67 24

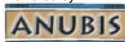
Greece: 00800 49 12 91 22

Poland: 00800 4 91 15 87

International: 00800 22 88 89 74

www.typhoon.de

Powered by



www.anubisline.com

Typhoon is trademark of ANUBIS Intl. Comp. Ltd. All other brand names and product names are trademarks or registered trademarks of their respective holders. Actual contents may differ slightly from those pictured. All specifications and designs are subject to change without prior notice. © Copyright 2004 by ANUBIS Intl. Comp. Ltd. Made in China or Taiwan.

TYPHOON™

multimedia for living



Typhoon TV PVR Universal

>>> User's Manual
Art.Nr.50670
Version 1.4

CE

Declaration of Conformity

EMC Directive 89/336/EEC

We, the manufacturer/importer

Anubis Electronic GmbH
Am Langfeld 38
66130 Saarbrücken
Germany

Declare that the product

Brand: TYPHOON
Model NO: 50670
Model: TV PVR Universal

herewith confirmed to comply with the requirements set out in the Council Directive on the Approximation of the Laws of the Member States relating to Electromagnetic Compatibility Directive (89/336/EEC, Amended by 92/31/EEC, 93/68/EEC & 98/13/EC), For the evaluation regarding the Electromagnetic Compatibility (89/336/EEC, Amended by 92/31/EEC, 93/68/EEC & 98/13/EC), the following standards are applied:

For EMC

EN 55022: 1998/A1:2000 Class B

EN 55013: 2001

EN 61000-3-2: 2000

EN 61000-3-3: 1995/A1:2001

EN 55024: 1998/A1:2001

IEC 61000-4-2: 1995

IEC 61000-4-3: 1995

IEC 61000-4-4: 1995

IEC 61000-4-5: 1995

IEC 61000-4-6: 1996

IEC 61000-4-8: 1993



ANUBIS Electronic GmbH, Am Langfeld 38.66130 Saarbrücken, Germany

Table of Contents

1.	TYPHOON TV PVR UNIVERSAL OVERVIEW	2
1.1	Features	2
1.2	System Requirements	4
1.3	Package contents	6
2.	GETTING STARTED	7
2.1	The Typhoon TV PVR Universal unit	7
2.2	Software installation	10
2.3	MS Media Codec 8.0	14
2.4	Launching Typhoon TV PVR Universal	14
2.5	How to update the driver	15
3.	THE TYPHOON TV PVR UNIVERSAL INTERFACE	17
3.1	Moving and resizing	17
3.2	Choosing your video source	17
3.3	Channel buttons	18
3.4	Volume control	18
3.5	Info panel	19
3.6	Settings button	19
3.7	Additional settings	27
3.8	How to record a program	30
3.9	TimeShifting	31
3.10	The Gallery	32
4.	REMOTE CONTROL	34
5.	KEYBOARD SHORTCUT SUMMARY	36
6.	CONTACT US	38
FAQ		39



1. Typhoon TV PVR Universal Overview

Thank you for purchasing the Typhoon TV PVR Universal USB 2.0 all-in-one system. This product turns your PC into a powerful desktop multimedia system. Your Typhoon TV PVR Universal provides a high-quality video-viewing experience, enabling you to watch cable TV, broadcast TV, or video from external sources, right on your computer monitor. It also allows you to record real-time video using an MPEG-1, MPEG-2, and MPEG-4 hardware encoder, and provides many other exciting features.

1.1 Features

- Connects to your PC through a USB 2.0 interface
- Contains a Phillips 7135 chipset
- Supports TV systems including NTSC M/N/NJ, PAL BG/DK/I/M/N, and SECAM LL' DK/I
- Provides worldwide TV audio decoding, including NiCAM, A2, MTS, BTSC, and EIAJ
- Provides real-time video recording with an MPEG-1, MPEG-2, and MPEG-4 hardware encoder
- Records full motion video up to 720x480/30fps (NTSC) and 720x576/25fps (PAL)
- Tunes in up to 125 cable or broadcast channels
- Enables input from external devices from either Composite Video or S-Video
- Pause, Rewind, and Fast Forward a live TV program through TimeShifting
- Scheduled Recording
- Captures still images from video

- Allows split-screen previewing of up to 25 channels through Multiple Channel Preview
- Provides full-screen and resizable viewing modes
- Receives audio through the same USB cable that carries video; no need for an additional audio cable (except when using external devices)
- Powered by the USB port; no need for an external power adapter
- Fully compatible with current versions of Windows: Windows® 2000 (SP4), and Windows® XP (SP1)

1.2 System Requirements

To use the Typhoon TV PVR Universal, you will need to make sure that your PC meets the following requirements:

- Windows® 2000 (SP4) or Windows® XP (SP1)
- CD-ROM or DVD drive
- Available USB 2.0 port
- Pentium® III 800 MHz processor, or faster (see the following specifications)
- Minimum of 128MB RAM (256MB RAM is recommended)
- 100MB hard disk space available for installation
- Additional hard disk space for recording and editing files
- DirectX9.0 installed
- VGA card with DirectX 8.1 support
- Sound card
- Speakers for audio output
- In addition, you will need cable TV or a TV antenna

* Please always refer to your PC's manual.

Processor		320x240			640x480			720x480		
		MPEG1	MPEG2	MPEG4	MPEG1	MPEG2	MPEG4	MPEG1	MPEG2	MPEG 4
P3 800	Preview	✓	✓	✓	✓	✓	✓	✓	✓	✓
	Record	✓	✓	✓	✓	✓		✓	✓	
P4 2.4G	Preview	✓	✓	✓	✓	✓	✓	✓	✓	✓
	Record	✓	✓	✓	✓	✓	✓	✓	✓	
P4 3.0G	Preview	✓	✓	✓	✓	✓	✓	✓	✓	✓
	Record	✓	✓	✓	✓	✓	✓	✓	✓	✓

1.3 Package contents

Your Typhoon TV PVR Universal package should contain all the items listed below. Please inspect the package to make sure that all items are present and no damage was sustained during shipping.

- Typhoon TV PVR Universal USB 2.0 TV box
- CD with driver and application software
- USB cable
- NTSC converter and PAL converter
- Composite video to S-Video converter
- Audio cable for use with external devices
- Remote control and IR extension cable
- User guide

2. Getting Started

2.1 The Typhoon TV PVR Universal unit



- 1 **Audio In:** Connects external audio to unit using supplied cable.
- 2 **TV In:** Connects to provided NTSC or PAL adaptor to connect to TV source.
- 3 **S-Video In:** Connects to S-Video sources, or to composite video sources using provided adaptor.
- 4 **IR Sensor:** Onboard IR sensor for remote control.
- 5 **Extended IR Sensor port:** Connects IR extension to Typhoon TV PVR Universal.
- 6 **Mini USB:** Connects the Typhoon TV PVR Universal to your PC.



Cables:

- 1 **Mini USB cable:** Connects the Typhoon TV PVR Universal to your PC's USB2.0 port (make sure that this is connected before you install or launch the application).

* Plug in the primary USB connector to the computer; plug in the secondary USB connector only if your PC/Notebook does not fully power the Typhoon TV PVR Universal. (See diagram 1)
- 2 **NTSC/PAL converters:** Connects your TV cable or antenna to the Typhoon TV PVR Universal (use one of these two devices, depending on whether you have cable or broadcast TV). (See diagram 2)
- 3 **Composite to S-Video adaptor:** Connects the Typhoon TV PVR Universal to composite video-format external devices, such as a DVD player or a VCR (devices that use S-Video plug directly into the Typhoon TV PVR Universal). (See diagram 3)
- 4 **IR Extension cable:** Provides an external IR sensor to use with your remote control. (See diagram 4)
- 5 **Audio cable:** Transmits audio from external devices to the Typhoon TV PVR Universal (no cable required for audio from your TV cable or antenna). (See diagram 5)

Cable and connector diagrams:

Diagram 1 (Mini USB cable)

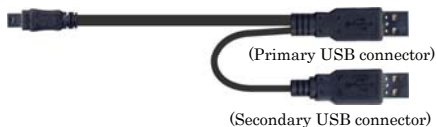


Diagram 2 (NTSC and PAL converters)



Diagram 3
(Composite to S-Video adaptor)



Diagram 4 (IR extension)



Diagram 5 (Audio cable)



2.2 Software installation

2.2.1 For Windows XP users

First, make sure that Windows XP (SP1) is installed in your system. Next, make sure the RF cable is connected to the Typhoon TV PVR Universal and that the Typhoon TV PVR Universal is connected to your PC.

Insert the Typhoon TV PVR Universal software CD into your PC's CD-ROM drive. The CD will automatically start and the installation window will open on your screen.



Before you install the Typhoon TV PVR Universal software, you will need to install DirectX. Just click on [DirectX] in the installation window to begin. A series of dialog boxes will appear; click "Next" or "Finish" at each prompt.



When DirectX has finished installing, the installation window will appear again. Now click on [Typhoon TV PVR] to install the Typhoon TV PVR Universal software.



When a dialog box called “Found New Hardware Wizard” opens on your screen, choose “Search for a suitable driver for my device” (recommended) and click “Next”.



When the Typhoon TV PVR Universal driver has finished installing, you will need to reboot your computer. To launch Typhoon TV PVR Universal, just double-click on the PVR icon on your desktop.

2.2.2 For Windows 2000 users

First, make sure that Windows 2000 (SP4) is installed on your system. Next, make sure the RF cable is connected to the Typhoon TV PVR Universal and that the Typhoon TV PVR Universal is connected to your PC.

Insert the Typhoon TV PVR Universal software CD into your PC's CD-ROM drive. The CD will start and the installation window will appear.



If a dialog box called "Found New Hardware Wizard" opens on your screen, choose "Search for a suitable driver for my device" (recommended) and click "Next".



Before you install the Typhoon TV PVR Universal software, you will need to click on [DirectX] to install it, then click “Next” or “Finish” at each prompt.



When DirectX has finished installing, reboot your computer. When the installation window reappears, click on [Typhoon TV PVR] to install the Typhoon TV PVR Universal software.



If “Found New Hardware Wizard” opens again, choose “Install from a list or specific location (Advanced)”. At the next dialog box, choose “Search for the best driver in these locations” and click “Browse”. Choose your CD drive and then D:\Driver if “D:\” is your CD-ROM drive (otherwise, choose the appropriate drive).

The “Found New Hardware Wizard” will reappear and allow you to install Matrix II. When the “Hardware Installation” box appears, choose “Continue Anyway”.

2.3 MS Media Codec 8.0

The MS Media Codec 8.0 is included on the CD so you can record in MPEG-4 formats. To install it, simply click on MS Media Codec 8.0 from the installation menu, and follow the prompts.



2.4 Launching Typhoon TV PVR Universal

Click on the PVR icon on your desktop to launch the Typhoon TV PVR Universal.



When you launch the PVR software for the first time, a dialog box will appear that will ask you to choose the country in which you are using your Typhoon TV PVR Universal. Just choose your country and click 'OK', or just click 'OK' to let the software Auto Detect your Country Code. At this point, the software will scan for available TV channels. This will take a few minutes.



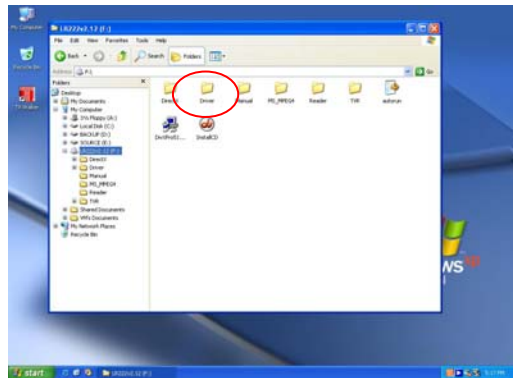
2.5 How to update the driver

If you want to update the driver to a newer version, you will need to uninstall the Typhoon TV PVR Universal driver before reinstalling:

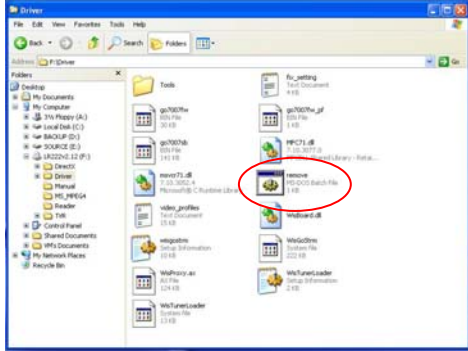
1. Remove the USB cable from the Typhoon TV PVR Universal.



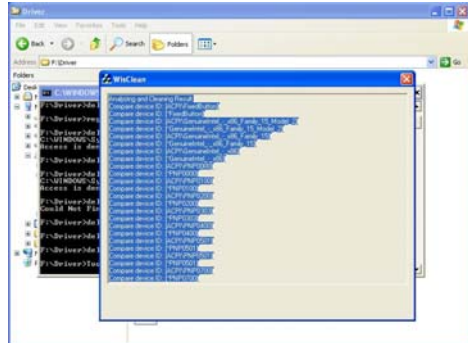
2. Using File Manager, browse the contents of the software CD and open the DRIVER folder. (or unzip the updated driver from the web site and then perform the next step).



- When this screen appears, double-click *“remove.bat”* to remove the driver.



- This screen will appear and the old driver will automatically be removed.



- When the old driver is uninstalled, reconnect the USB cable and install the driver again.

3. The Typhoon TV PVR Universal Interface

The heart of Typhoon TV PVR Universal is the Typhoon TV PVR Universal software interface.



3.1 Moving and resizing

You can adjust the size of the TV screen by clicking and dragging on its edges with your mouse. You can move the interface around your screen by clicking and dragging anywhere on the interface. To switch to a full-screen display, double-click on the TV picture. Double click again to switch back to the previous view.

3.2 Choosing your video source

Four buttons on the left of the interface allow you to choose your source.



- Air TV:** Use this to receive your TV signal through a broadcast antenna.
- Cable TV:** Use this to receive your TV signal via cable.
- AV IN:** Use this when an external device using composite video is connected to the Typhoon TV PVR Universal.
- S-Video:** Use this when an external device using S-Video is connected to the Typhoon TV PVR Universal.

3.3 Channel buttons

On the left-hand side of the interface you will find the channel buttons; use them to change channels. With the +/- buttons, located at the bottom of the channel numbers panel, you can add or delete a tuned channel from your Channel List.

See sections 3.6.1 and 3.6.5.

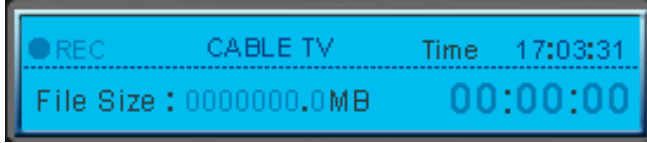


3.4 Volume control

The +/- signs at either end of the volume control let you increase or decrease the volume level. The M button in the middle will mute the volume. You can also click on the level bar to the right to set the volume to that level.



3.5 Info panel



Left of the channel buttons you will find the info panel. The top part of the info panel shows you your current video source and the channel you are tuned in to. If you are in record mode, the “REC” button will be lit.

The bottom part of the info panel shows the size of file you are recording, your volume level, the current time, and how long you have been recording. Clicking anywhere on the volume bar will set the volume to that level.

3.6 Settings button



Below the info panel you will see a number of buttons. These buttons provide you with many options for setting your preferences. The most important button is the settings button, which opens the Settings dialog box.

3.6.1 TV settings tab

The first tab in the Settings dialog box is TV settings.

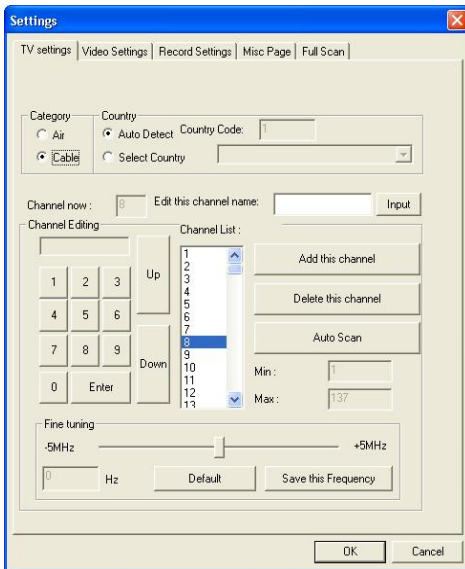
Here you can select your video mode, set your country settings, scan for channels, and select and name your favorite channels.

Category

This tab allows you to choose either cable or air (broadcast) TV as your TV source.

Country

This tab sets the Typhoon TV PVR Universal to the TV standards of the country where you are using the Typhoon TV PVR Universal. The setting process should happen automatically, but if it does not, just click on Select Country and choose your country manually.



Channel editing

This allows you to choose and name your favorite TV stations and add them to your channel list. To add a channel, choose it and click on “Add this channel”; to delete a channel, choose it and click on “Delete this channel”. To name a channel, choose it, type a name in the “Edit this channel” box, and click on “Input”.

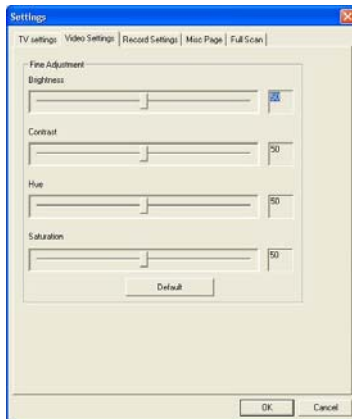
Later, you will be able to access your favorite channels by clicking the right edge of the Typhoon TV PVR Universal interface - a list of your favorite channels will appear, and you can click on a channel to choose it. You can also right-click on any channel listed in your favorites to change its name.

Fine Tuning

The Fine Tuning feature allows you to fine-tune your channel frequencies. Slide the Fine Tuning button to the left or right to make minor adjustments to the frequencies. To save your changes, click “Save this Frequency”, or you can click “Default” to go back to the default setting.

3.6.2 Video settings tab

This tab allows you to set TV display settings including Brightness, Contrast, Hue, and Saturation. If you click on “Default“, the display settings will return to their factory settings.

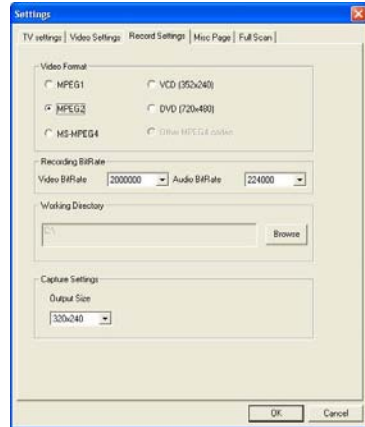


3.6.3 Record settings tab

This dialog box allows you to set your preferences for video recording. If you are recording files that you only plan to view on your computer, choose one of the MPEG options. For an external device, choose the format of that external device.

Video format

This allows you to choose whether you will record files in MPEG-1, MPEG-2, MS-MPEG-4, VCD, DVD, or another MPEG4 codec such as DivX. You can go to the DivX website <http://www.divx.com/divx/> to download a free codec.



Recording BitRate

Here you can choose the BitRate of your recording depending on which file format has been chosen. A higher BitRate will improve the quality of recorded files.

Working directory

This allows you to choose the location on your PC where movies and pictures are saved. To change the location, click on “Browse” and select the folder you want to save your files in.

Capture settings

Here you can choose the output size of video that you record.

Note:

MPEG-1: compressed video and audio files

MPEG-2: compressed video and audio files with better quality

MS-MPEG4: compressed video and audio files with highest quality

Other MPEG4 codec: compressed video and audio files with highest quality

VCD format: CD-video standards (standards similar to MPEG-1)

PAL: 352x288 pixels at 25 frames per second

NTSC: 352x240 pixels 29.97 frames per second

DVD format: High quality video standards (standards similar to MPEG-2)

PAL: 720x576 pixels at 25 frames per second

NTSC: 720x480 pixels 29.97 frames per second

3.6.4 Misc Page tab

This box allows you to make additional settings for recording and taking snapshots.

TimeShift recording

When you check this box, files that you record in TimeShift mode will not be saved after you turn off TimeShift. See section 3.9 for an explanation of TimeShifting. You can also set the directory that the software will use to hold the TimeShift temp file. To change this, click on “Browse” and select the folder you wish to use.

Snapshot settings

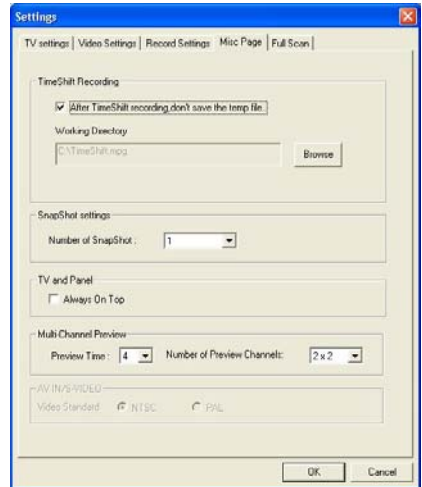
This allows you to choose how many snapshots are taken when you click the Snapshot button. See section 3.7.4 for an explanation of Snapshots.

TV and Panel

When you check “Always on Top”, the TV window will always be in front of other applications on your screen.

Multi-Channel Preview

This allows you to preview channels, and to choose the number of channels you preview and the length of time you preview each channel. See section 3.6.5.

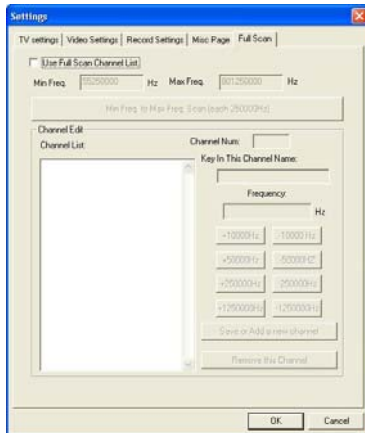


3.6.5 Full Scan tab

This box lets you do a full scan for channels, as well as input frequencies to create channels. If you wish to use this option, check the “Use Full Scan Channel List” checkbox.

Min Freq. To Max Freq. Scan

This will scan through all available frequencies to detect available channels. Click “Start Scan” on the box that appears to start the full scan; click on “Stop Scan” to stop scanning. The scan will take a while to complete.



Channel Edit

Here, you can edit channels detected, or add your own channels by entering a frequency. To name to a channel, select it from the Channel List, type a name into the “Key In The Channel Name” box, and click on “Save or Add a new channel”. To remove a channel, enter a Frequency, or adjust the current frequency with the +/- Hz buttons and click “Save or Add a new channel”. To remove a channel, select it from the Channel List and click “Remove this Channel”.

3.7 Additional settings

On the same toolbar as the settings button, you will find additional buttons that provide options for customizing Typhoon TV PVR Universal.

3.7.1 Schedule Recording button



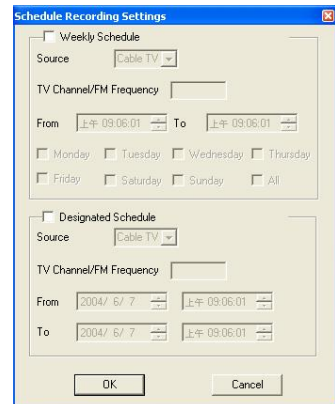
To the left of the settings button is the Schedule Recording button. When you click on this button, you will see a new symbol in your taskbar. When you click on this symbol, a window will appear that allows you to schedule recording of TV programs.

Weekly Schedule

This allows you to schedule recording of shows that are broadcast at the same time every day or every week.

Designated schedule

This allows you to program Typhoon TV PVR Universal to record a single show.



3.7.2 AutoScan button



Clicking AutoScan allows you to quickly scan, one at a time, the TV channels that are currently available. To stop AutoScan, click on the button again and click OK.

3.7.3 Change Skin button



Clicking the Change Skin button gives you a different view of the PVR software. Clicking on the button again will cycle through available views.

3.7.4 Snapshot button



When you click on Snapshot, the Typhoon TV PVR Universal will take a picture of the current frame appearing on your monitor, and the snapshot will be saved in your Gallery. See section 3.10 for an explanation of the Gallery.

3.7.5 Multiple Preview button



When you click on the Multiple Preview button, you will be able to see an array of thumbnail images of the TV programs currently airing. When you see a program that you want to watch, just double click on it. The amount of time that each preview screen is displayed, and the number of channels shown, can be selected on the Misc Page tab (see section 3.6.4).

3.7.6 Audio settings button



When you click the audio settings button, a dialog box opens that allows you to set your audio preferences — balance, bass, treble, and volume. Also in this dialog box, “Audio Reception” allows you choose whether to play audio from TV programs in stereo or mono. Additionally, if a TV station broadcasts its programs in more than one language, you can use the language buttons to choose the language you prefer.

3.7.7 Reserved button



This button is reserved, and is non-functional.

3.8 How to record a program



The top row of buttons on your Typhoon TV PVR Universal PVR interface allows you to record a program while watching it, and lets you control the TimeShifting feature.

3.8.1 Record button



By clicking this button, you can record a program while watching it. When you click again, the recording will stop. You will find the recorded file in the Gallery (see section 3.10 for an explanation of the Gallery) in the format you chose in Record Settings/Video Format (see section 3.6.3). You cannot change channels while recording.

3.9 TimeShifting



The TimeShift Function allows you to pause, fast forward, or rewind a program while you are watching it. To start a TimeShift recording, click on the red Start/Stop TimeShift button.

When in TimeShift mode, the Time Slider will appear in the horizontal bar above the TimeShift button. The bar shows how much video is currently recorded, and the gray square is your current position. Dragging the slider to the left rewinds the video, dragging the slider right fast-forwards the video up to what is currently playing.

The other controls are Play, Pause, Stop, Skip to Beginning, and Skip to End. Clicking on Pause will pause the video, and you can resume watching by clicking on Play. Skip to Beginning will go to the beginning of the recorded video, and Skip to End will skip to the end of the recorded video. (what is currently playing) To stop TimeShift mode, you can click on Stop or on the red Start/Stop TimeShift button. You cannot change channels while TimeShifting.

3.10 The Gallery

The gallery is a shortcut to the location on your hard drive where video files and snapshots are stored. You can choose your hard drive location as explained in Record Settings/Video Format. (see section 3.6.3)

You can open the gallery by clicking on the button located at the bottom right corner of the PVR.



Here you can see what files you have recorded, as well as the following buttons:



- Close Gallery:** Closes the Gallery
- Send by E-Mail:** Opens your computer's default e-mail program to e-mail the selected file
- Change List View:** Toggles between Thumbnail, List, and Detailed views of your files
- Play Movie:** Plays a selected movie
- Paint:** Opens selected image

Right-clicking a file gives you a dropdown menu with the following options:



- Edit:** Opens the file
- E-Mail:** Opens your computer's default e-mail program to e-mail the selected file
- Save As:** Lets you name and save the file to a selected folder
- Delete:** Deletes selected file
- Delete All:** Deletes all files in gallery

4. Remote Control

The Typhoon TV PVR Universal comes with a fully functional remote control. Make sure you aim at either the IR sensor on the unit or the IR sensor on the extension cable. (see section 2.1)

You can use the following buttons on Typhoon TV PVR Universal's remote control to access many of Typhoon TV PVR Universal's functions.



Button	Function
Air/CATV	Toggles between air and cable reception.
Video	Toggles between Video settings; use Volume +/- to adjust
Audio	Toggles between Audio settings; use Volume +/- to adjust
Power	Turns the PRV program off
AV Source	Controls the input source (air, cable, AV in, S-Video in)
Full screen	Turns full screen mode on or off
Stereo	Toggles between stereo and mono
Mute	Turns mute on or off
Numbers 0-9	Allows you to select a channel
Volume +/-	Raise or lowers the volume
Channel +/-	Allow you to go up or down one channel
Recall	Allows you to jump to the previous channel
Enter	Takes a snapshot of the current image on the screen

5. Keyboard Shortcut Summary

The following table shows shortcuts that you can use to control Typhoon TV PVR Universal with your keyboard.

<i>Function</i>	<i>Remote Control</i>	<i>Keyboard</i>
Turn the PVR program off	Power	Ctrl + Alt + F4
Choose channel	Numerals	Numerals
Go up one channel	CH+	Page Up
Go down one channel	CH-	Page Down
Recall previous channel	Recall	R
Add a channel		+
Delete a channel		-
Video setting mode (Brightness, Contrast, Hue, Saturation)	Video	V
Adjust selected video setting	Vol+/Vol-	Up or down arrow
Choose audio settings (balance, bass, treble)	Audio	A

Adjust selected audio setting	Vol+ / Vol-	Up or down arrow
Raise or lower volume	Vol+ / Vol-	Up or down arrow
Turn mute on or off	Mute	M
Switch between Stereo and Mono	Stereo	S
Choose input source (air, cable, AV in, S-Video in)	AV Source	I
Switch between air/cable reception	Air/CATV	C
Take a snapshot	Enter	Spacebar
Turn full screen mode on or off	Full Screen	F
Open 'About' dialog box		Alt plus / or ?

6. Contact Us

If you have attempted to resolve any problems you have with your Typhoon TV PVR Universal and still require assistance, please contact us by e-mail at: service@typhoon.de

Driver and software updates can be found on our website at www.typhoon.de

FAQ

Q: During the initial TV channel scanning just after installation, why does the scanning stop halfway?

A: Basically, there are 2 possibilities. a) Due to poor signals through the antenna – Ensure that the antenna cable is directly from the main point and not using a splitter, b) the USB ports do not have sufficient power – connect the TV PVR to the system main USB ports and not through USB Hubs. For the same reason, it is why that the system requirements are set high. Newer mainboards can support up to 8 USB ports. Older mainboards can only support 2 or 4 USB ports. For Notebooks, the requirements are even stricter. The Notebook should be of Intel® Pentium® IV class to ensure that the mainboards used are the latest.

Q: Why do you need two USB interfaces for the TV PVR Universal?

A: For desktops of new generation mainboards do not require two of the USB plugs to be used, just the main connector is sufficient. This is because USB 2.0 ports on newer mainboards are 100% compliance to the USB 2.0 specifications. Older mainboards might claim to support USB 2.0 ports but in reality, they were released before the USB 2.0 specifications really come to effect. The main issue is due to the USB 2.0 port providing the correct amount of power to the TV PVR Universal. For Notebooks, most of these ports do not match the requirements, so two of the connectors must be inserted to ensure enough power to the TV PVR Universal.

Q: I have set the correct Country type in the Setup configuration, but why I cannot receive any TV signals?

A: First, check the antenna signal and ensure the signals are strong. Secondly, do not use any antenna splitter, as this will degenerate the signal strength. After the Setup and if not signal are found, try rebooting and check again. If necessary, do the auto-scan again.

Q: I can receive my TV channels but why is there snow, or tiny colored dots on the preview window?

A: Ensure the antenna cable is directly to the TV PVR Universal. Do not use any splitter as this is subjected to interference from the surrounding thus inducing the disturbances.

Q: I am using S-Video connections to record my Videos but why is it in black-n-white, even in the preview window?

A: Check the entire cable connection all the way to the source and ensure it is correctly rigged to S-Video connection. If you have use the Composite interface in either the Source or on the TV PVR, the result will be black-n-white playback. Vice versa, if you connect using Composite interface and set the TV PVR application to S-Video (AV IN), the resulting image will also be black-n-white.

Q: I can view the TV channels but there is no audio.

A: Ensure the Sound properties in Windows have set the audio level to your preferred listening level. Also check the box for "Use preferred devices" to ensure that your sound card is the main device.

Q: Why are the System Requirements so high?

A: Basically, at the point of release of this manual the fastest CPUs are the 3.0GHz systems. The TV PVR is sufficient for Intel® Pentium® IV 1.8GHz and faster. The main driving issues are the speed of the USB Bus through the system for previewing and fast graphics processing enough to do recording. A lower specification might still do the job, but you might have performance lag due to older USB Bus, or slow CPU process power, or even older Graphics card which cannot overlay correctly the video on screen.

Q: After auto-scan or during auto-scan, why does the application hang?

A: When auto-scanning is activated, the CPU resources are needed and if either the signal is poor or USB ports do not have enough power to provide the processing – then the system might hang. Simply reboot the system and change the USB connection position. The best is to connect to the number 3 and 4 USB ports. Also ensure the antenna cable is directly routed and not from a splitter unit.

Q: After scanning, the system hanged and no images but audio is heard.

A: Reboot the system first and launched the Typhoon PVR application. If the station is heard but no image at all, click on the Setup button below the interface panel. Go to the Recording Settings, and change the option to either MPEG2 or MS-MPEG4. Check if the image appears. If the Station image appears, change the option back to MPEG1 to check. This symptom is likely due to memory issues with the Graphics and system allocations.

NOTES