

AAA/LR03 x4 | Batteries not included.  
Requires 4 AAA/LR03 batteries.

AGES 6 AND UP

14001  
27Mhz

# INDIANA JONES™

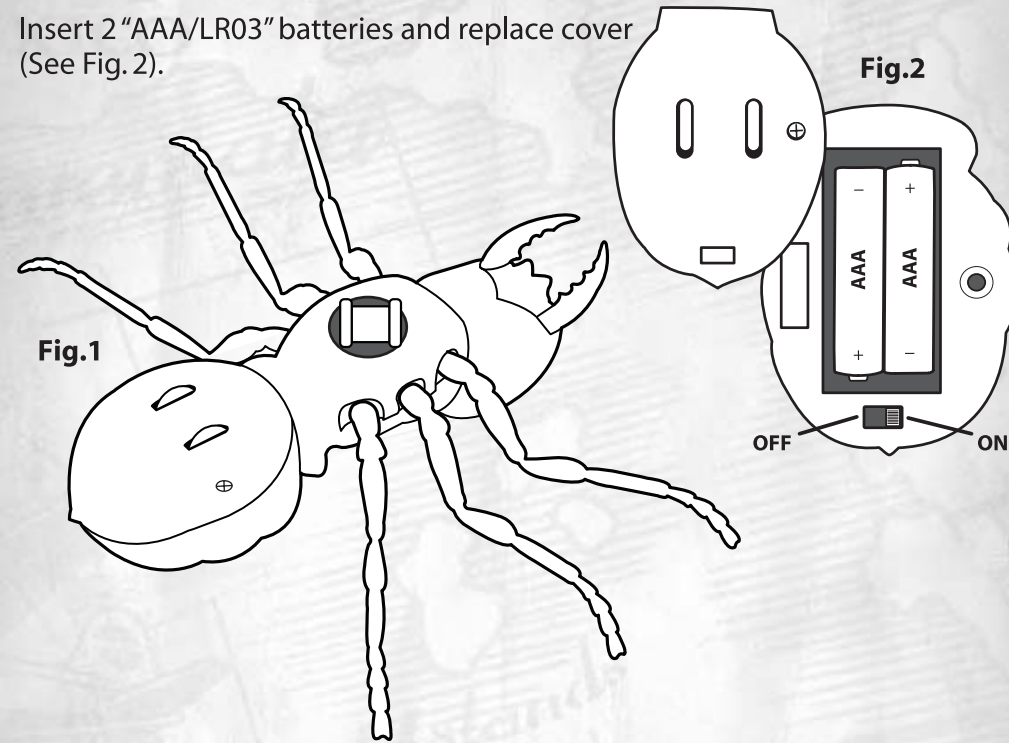


**GIANT RC ANT**  
WITH CRYSTAL SKULL REMOTE CONTROL

## Installing batteries into ant

Tool required - Small Phillips head screwdriver (not included) ⊕


1. Using a Phillips head screwdriver remove the battery cover from the bottom of the Giant RC Ant (See Fig. 1).
2. Insert 2 "AAA/LR03" batteries and replace cover (See Fig. 2).



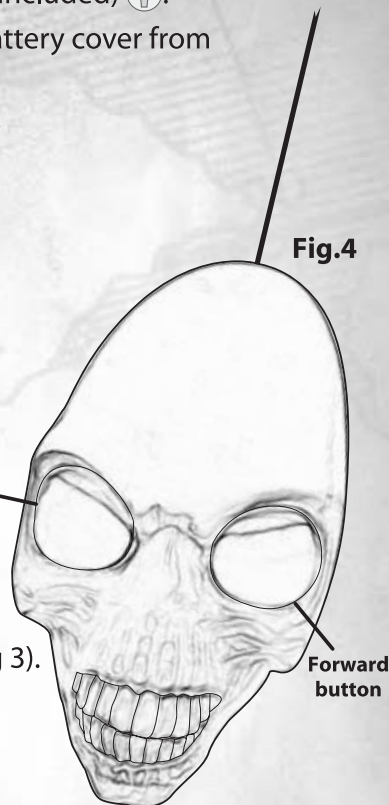
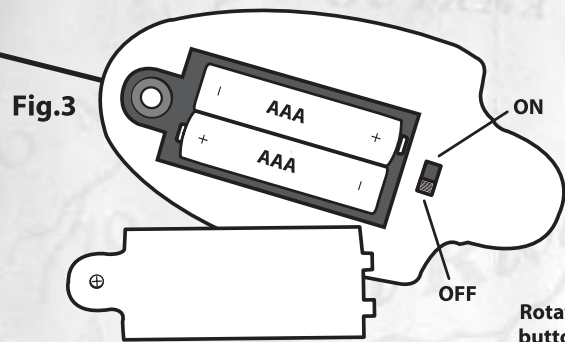
### BATTERY SAFETY INFORMATION

- Non-rechargeable batteries are not to be recharged.
- Rechargeable batteries are only to be charged under adult supervision.
- Rechargeable batteries are to be removed from the toy before being charged.
- Different types of batteries or new and used batteries are not to be mixed.
- Batteries are to be inserted with the correct polarity.
- Exhausted batteries are to be removed from the toy.
- The supply terminals are not to be short-circuited.

## Installing batteries into controller

Tool required - Small Phillips head screwdriver (not included) .

1. Using a Phillips head screwdriver remove the battery cover from the back of the controller (See Fig. 3).
2. Insert 2 "AAA/LR03" batteries and replace cover.



## Using your Giant RC Ant

1. Turn the power switches to the "ON" position on both the controller and ant (See Fig. 2 and Fig 3).
2. Move the ant forward or make it turn using the buttons on the controller (See Fig. 4).



**CAUTION:** To prevent entanglement, keep hair away from wheels

### NOTE:

- Do not immerse in water.
- For best performance use your Giant R/C Ant on a smooth flat surface like a hardwood floor.
- Operating multiple vehicles with the same frequency in close proximity will cause interference and poor performance.
- Works best away from high voltage power lines, large buildings and walls.
- Hold the transmitter antenna up for best performance.
- When the product does not respond, slows down, or loses range, move remote control closer to your Giant RC Ant (recommend 10 feet range). If the product still does not respond, replace with NEW batteries.

FCC ID: WB314001UMI2008  
MADE IN CHINA

27Mhz

This device complies with part 15 of the FCC Rules. Operation is subject to the following two conditions.  
(1) this device may not cause harmful interference, and  
(2) this device must accept any interference received, including interference that may cause undesired operation.

**WARNING:** Changes or modifications to this unit not expressly approved by the party responsible for compliance could void the user's authority to operate the equipment

NOTE: This equipment has been tested and found to comply with the limits for a Class B digital device, pursuant to Part 15 of the FCC Rules. These limits are designed to provide reasonable protection against harmful interference in a residential installation. This equipment generates, uses and can radiate radio frequency energy and, if not installed and used in accordance with the instructions, may cause harmful interference to radio communications. However, there is no guarantee that interference will not occur in a particular installation. If this equipment does cause harmful interference to radio or television reception, which can be determined by turning the equipment off and on, the user is encouraged to try to correct the interference by one or more of the following measures:

- Reorient or relocate the receiving antenna.
- Increase the separation between the equipment and receiver.
- Connect the equipment into an outlet on a circuit different from that to which the receiver is connected.
- Consult the dealer or an experienced radio/TV technician for help.

**KEEP THESE INSTRUCTIONS FOR FUTURE REFERENCE  
DO NOT DISCARD**

Problems? Before taking this product back to the store, please call us.  
We can help! 1-888-742-2484 or go to [www.unclemilton.com](http://www.unclemilton.com)

**INDIANAJONES**

© 2008 Lucasfilm Ltd. & TM where indicated.  
All rights reserved. Used under authorization.

**Uncle  
Milton**

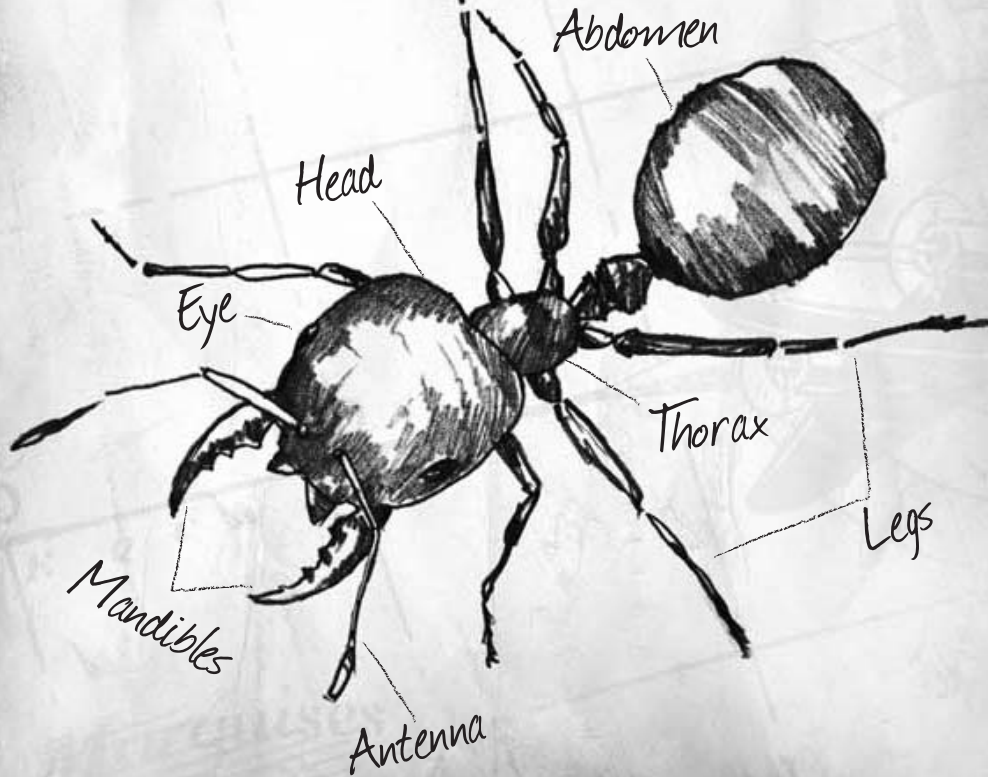
Uncle Milton Industries, Inc. - Westlake Village, CA 91362  
1-888-742-2484 Fax: 818.707.0878 [www.unclemilton.com](http://www.unclemilton.com)  
© UMI, Inc. All rights reserved. Printed in China.

14001-0250-0708

FIELD NOTEBOOK

INDIANA JONES™

Amazing Ant Facts



Trap Jaw Ant

Amazing ant found in tropical areas.  
Sort of like an ant with flying powers.  
It uses its jaws to snap at the ground  
and launch its body in the air.  
Never seen anything like it. It literally  
happens in the blink of an eye.

NOTE:  
Jaws snap shut at speeds as fast as 45 mph.

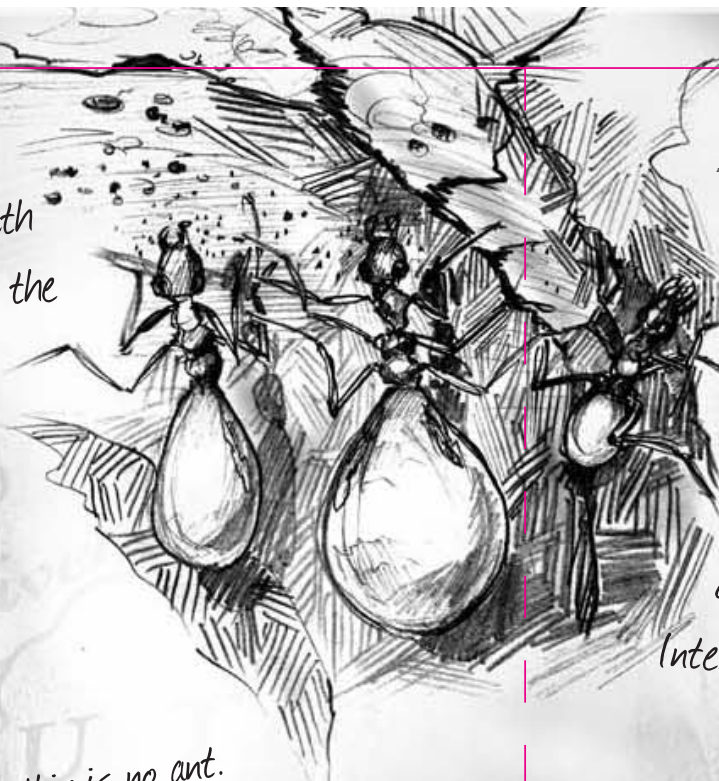
Giant Ant

Have to be the biggest ants I've ever seen. Almost like a bad dream  
I had once. Appeared out of nowhere in the Southeast Asian Rainforest.  
Nocturnal, which is bad for a good night sleep. Still, not nearly as  
frightening as an entirely different species of giant ants  
I encountered while searching  
for the Crystal Skull.



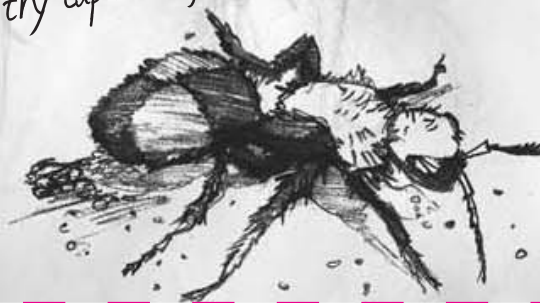
## Honey-pot Ant

These ants' abdomens are filled with honey to see the colony through in the harsh desert drought. Thought the guide was loco when he told me to eat one of these little devils. Boy, was it good. I had seconds.



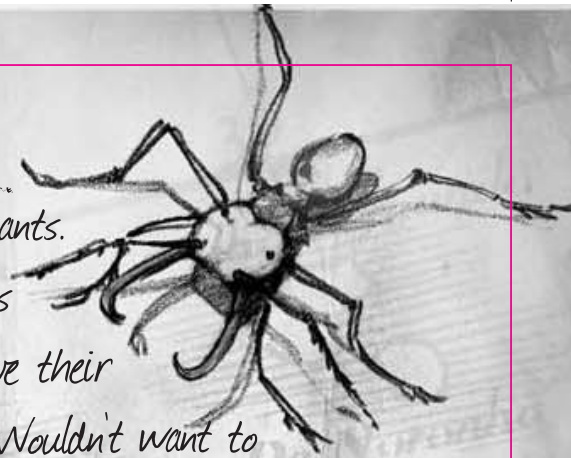
## Velvet Ant

Soft, attractive and dangerous, but this is no ant. It's a hairy wasp that delivers one of the most painful stings of any insect known to man. Sometimes called "cow killers." Usually bright orange or red with black. Females have been known to make a squeaking sound if captured. But who would want to try capturing one?



## Army Ant

A can't-miss group of ants. Swarms numbering as high as 200,000 leave their nest in search of food. Wouldn't want to get in their way. Tough, sharp jaws and a fearless offensive makes everything in their path fair game. Interestingly, they appear to be blind!



## Leaf-cutter Ant

Talk about hard workers. South American leaf-cutter ants can take down more greenery than any other animal in the rainforest, and as a colony, they move tons of soil. Their jaws actually vibrate to slice leaves apart! I've been told they can chew their way through leather. And they can carry 20 times their own weight. That would be like me carrying a one-ton load. Not going to happen today!

