

AWID RFID Module Installation Manual

Series 500 Reader Installation

Version 1.00

Purpose

This document describes the installation process of the AWID RFID Module in the Series 500 Reader. This module is an option that may be purchased by the customer.

Model Number: RDR-69N1AKU-API

Part number: EIPCR6010

NOTICE: Installation of this module may only be made by qualified API Healthcare employees. This is not a field upgrade, and must be done at the API factory.

FCC Notice

FCC ID: W7N-PROXAW01

Compliance Statement (Part 15.19)

This device complies with Part 15 of the FCC Rules.

Operation is subject to the following two conditions:

1. This device may not cause harmful interference, and
2. This device must accept any interference received, including interference that may cause undesired operation.

Warning (Part 15.21)

Changes or modifications not expressly approved by the party responsible for compliance could void the user's authority to operate the equipment.

FCC Interference Statement (Part 15.105 (b))

This equipment has been tested and found to comply with the limits for a Class B digital device, pursuant to Part 15 of the FCC Rules. These limits are designed to provide reasonable protection against harmful interference in a residential installation. This equipment generates uses and can radiate radio frequency energy and, if not installed and used in accordance with the instructions, may cause harmful interference to radio communications. However, there is no guarantee that interference will not occur in a particular installation. If this equipment does cause harmful interference to radio or television reception, which can be determined by turning the equipment off and on, the user is encouraged to try to correct the interference by one of the following measures:

- Reorient or relocate the receiving antenna.
- Increase the separation between the equipment and receiver.
- Connect the equipment into an outlet on a circuit different from that to which the receiver is connected.
- Consult the dealer or an experienced radio/TV technician for help.

Installing the RFID Module

1. Place double sided foam tape on the back side of the module as shown in Figure 1

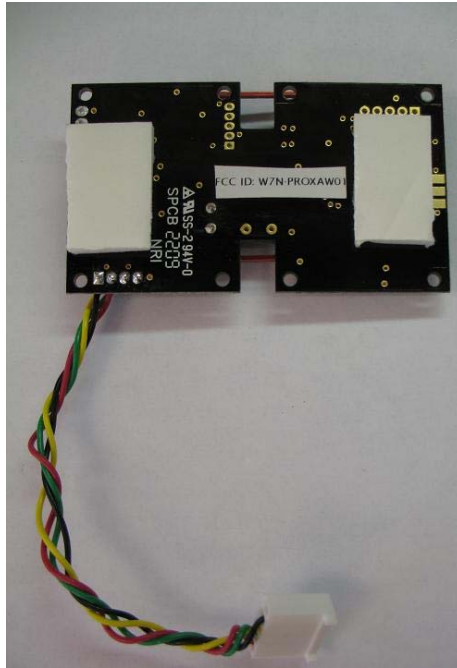


Figure 1.

2. Place the module tape side up as shown in Figure 2.

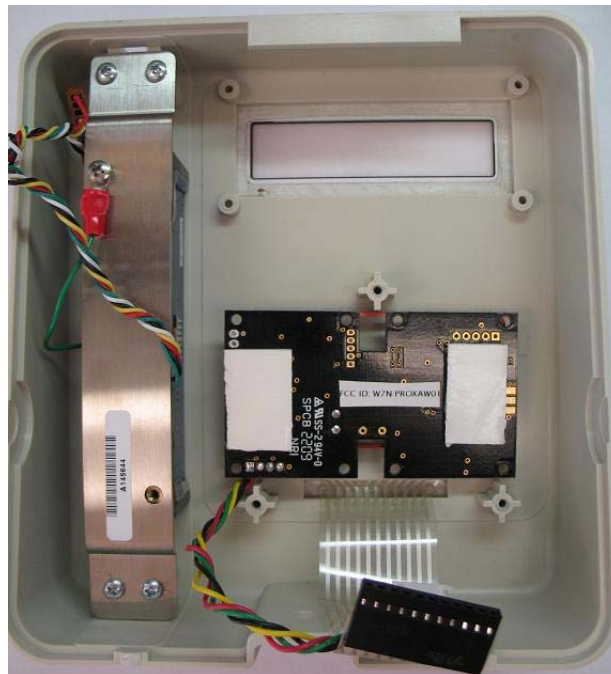


Figure 2.

3. Place the TA-500 main circuit board in the case in the normal manner. Press down the TA-500 board to ensure it makes contact with the tape on the RF module.
4. Install the screws to mount the main board to the case.



Figure 3.

5. Connect the cable from the RFID module to the COM2 connector as shown in Figure 3.
6. Complete final assembly of the unit.

Testing the RFID Module

1. Apply power and wait for the unit to boot up.
2. Enter Diagnostic Mode:
 - a. Hold the F1 key until the display shows: DIAGNOSTIC PIN
 - b. Enter the PIN number by pressing the following keys: 415049<ENT>
 - c. Press 1 (BADGE)
 - d. Press 1 (RAW DATA)
3. Hold the test badge near the front plate of the reader until it displays: BAR SUCCESS.
4. Verify the number displayed matches the number printed on the test card.
5. This completes test of the module.