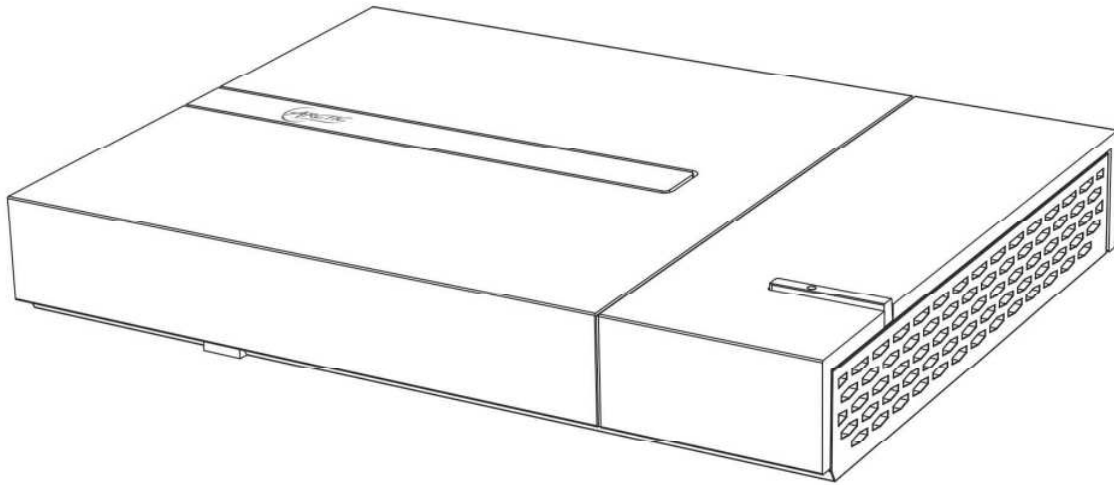




MC101Series

User Manual

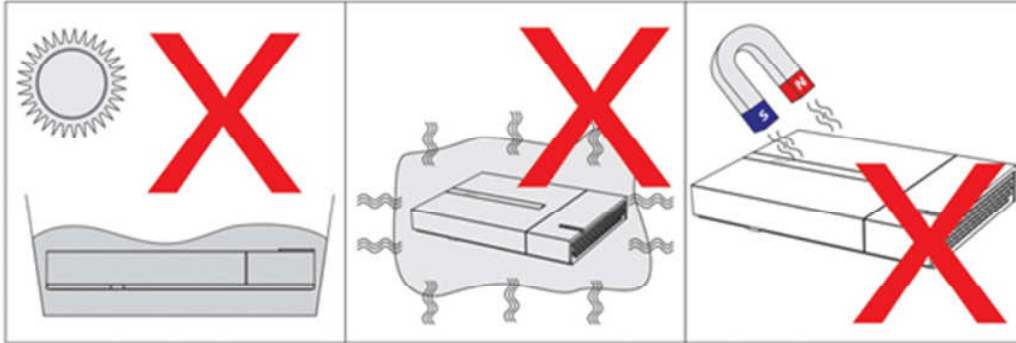
For further information, please visit mc101series.arctic.ac



Safety Instructions

Your MC101 is designed and tested to meet the latest standards of safety for information technology equipment. However, to ensure your safety, it is important that you read the following safety instructions.

Setting up your system



1. Do not use this product near water or a heat source such as a radiator.
2. Do not block the air vents to this product or impede the airflow in anyway.
3. Do not use or expose this product around magnetic fields as magnetic interference may affect the performance of the product.

Care during use

1. Do not spill water or any other liquids on your system.
2. When the system is turned off, a small amount of electrical current still flows. Always unplug all power, modem, and network cables from the power outlets before cleaning the system.
3. If you encounter the following technical problems with the product, unplug the power cord:
 - The power cord or plug is damaged.
 - Liquid has been spilled into the system.
 - The system does not function properly even if you follow the operating instructions.
 - The system was dropped or the chassis is damaged.
 - The system performance changes.



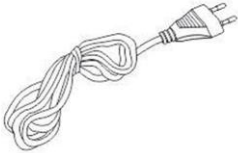
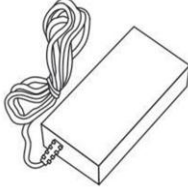


Warranty

This ARCTIC product includes a 2-year limited warranty. For further information, please consult warranty.arctic.ac

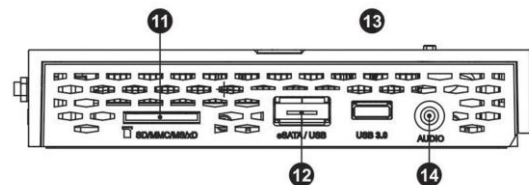
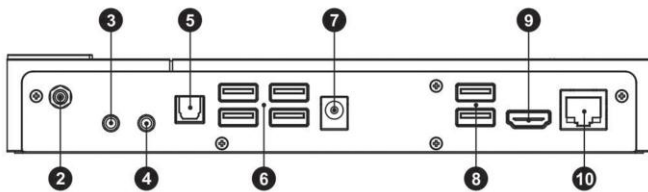
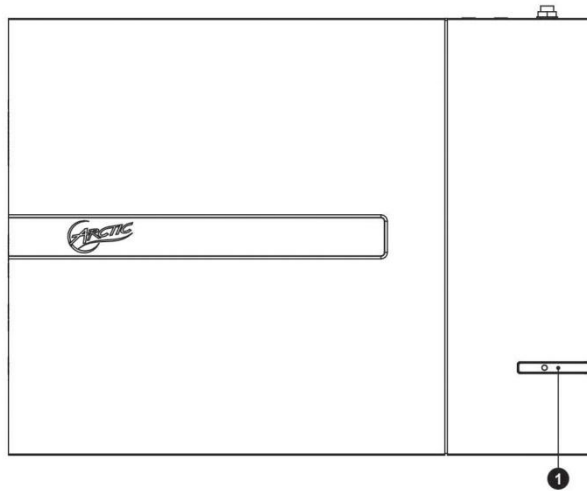
Table of Content

Chapter 1	Introducing the MC101	
1.1	Package Contents.....	4
1.2	Front, Side and Rear View.....	5
Chapter 2	Connecting the MC101	
2.1	Connecting USB 3.0 / 2.0 Devices.....	6
2.2	Connecting the Video Display.....	6
2.3	Connecting the Network.....	6
2.4	Connecting the Speakers.....	7
2.5	Connecting the Power Cord.....	7
Chapter 3	Using the MC101	
3.1	Enable Full Screen.....	8
3.2	Play Movie Files	13
3.3	Play Blu-ray Disc in WMC	16
3.4	Play Music Files.....	18
3.4.1	WMC.....	18
3.4.2	WMP.....	18
3.5	Create Playlist.....	20
3.5.1	WMC.....	20
3.5.2	WMP.....	23
3.6	Add Radio Station.....	24
3.6.1	WMC.....	24
3.6.2	WMP.....	25
3.7	Install Internet TV in WMC.....	27
3.8	Scan TV Signal (TV tuner required).....	34
3.9	Migrate iTunes Library from another Computer.....	36
	(users must first have iTunes installed on their system)	
Chapter 4	Upgrade and Recovery	
4.1	Change Memory Module.....	37
4.2	Recovery Using the Recovery in Control Panel.....	42
4.3	Recovery Using the Advanced Boot Options.....	46

1.1 Packaging Contents

 <p>MC101 x 1</p>	 <p>TV Antenna x 1</p>	 <p>AC Power Cable x 1</p>
 <p>AC Power Adapter x 1</p>	 <p>HDMI Cable x 1</p>	 <p>Quick Start Guide x 1</p>

1.2 Front, Side and Rear View



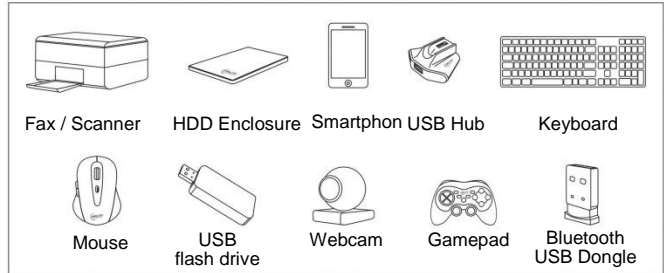
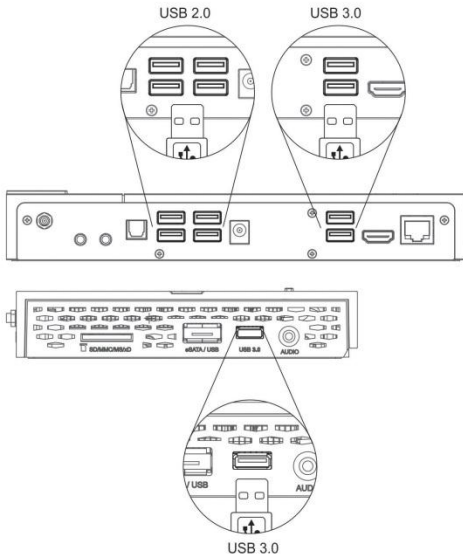
EN Front & Rear View

1. Power Button
2. TV Antenna
3. Audio Output Jack
4. Line in Jack
5. Optical Out (SPDIF)
6. USB 2.0 Port x 4
7. DC Power Jack
8. USB 3.0 Port x 2
9. HDMI Port
10. Ethernet Port

Side view

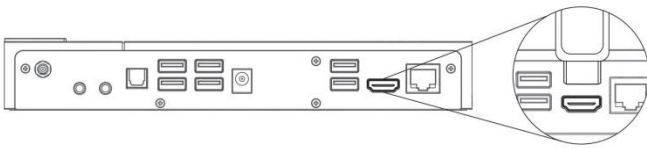
11. 4 in 1 Memory Card Reader (SD, MMC, MS, XD)
12. Combo eSATAp + USB 2.0 Port
13. USB 3.0 Port
14. Headset / Audio Output Jack

2.1 Connecting USB 3.0 / 2.0 Devices



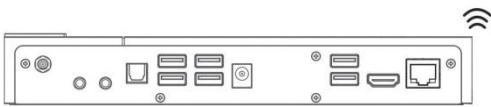
*USB 3.0 devices will not achieve full speed if plugged in the rear panel USB 2.0 ports.

2.2 Connecting the Video Display

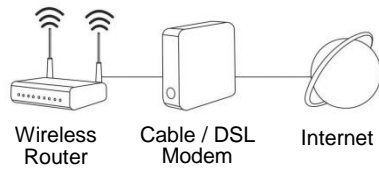


2.3 Connecting the Network

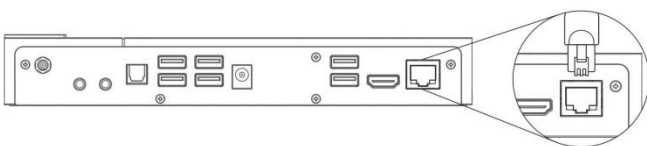
Wireless Connection



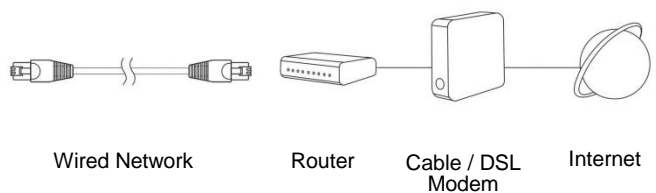
Wireless Network



Wired Connection

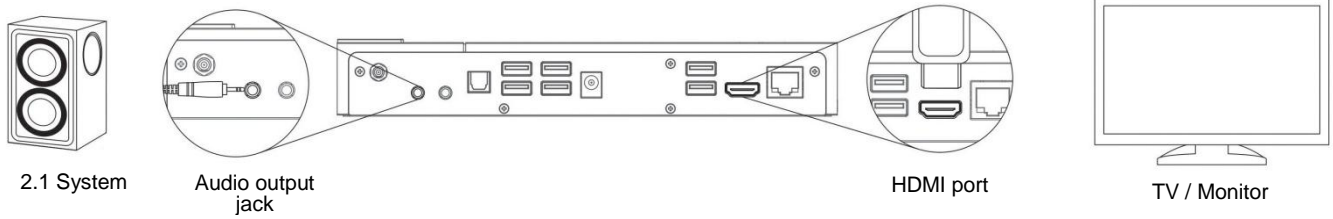


Ethernet port

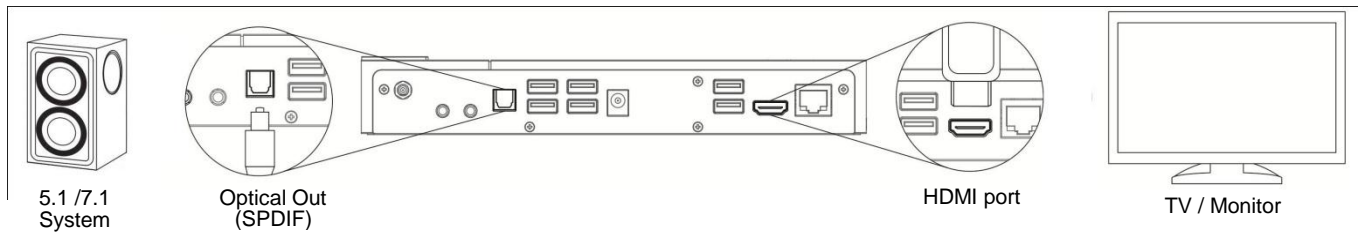


2.4 Connecting the Speakers

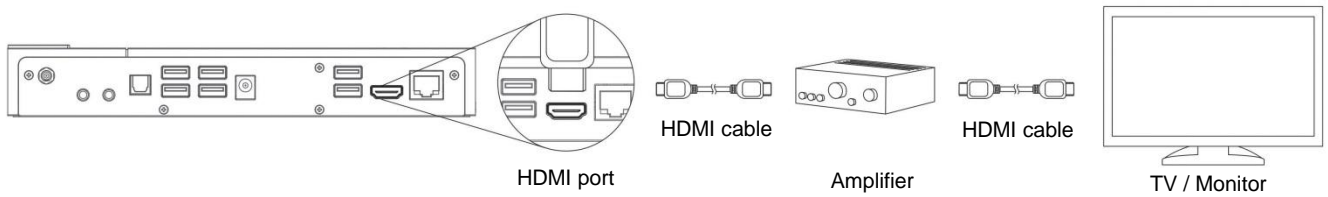
Analog connection - 2.0 and 2.1 systems



Digital connection (Optical) - 5.1 and 7.1 systems

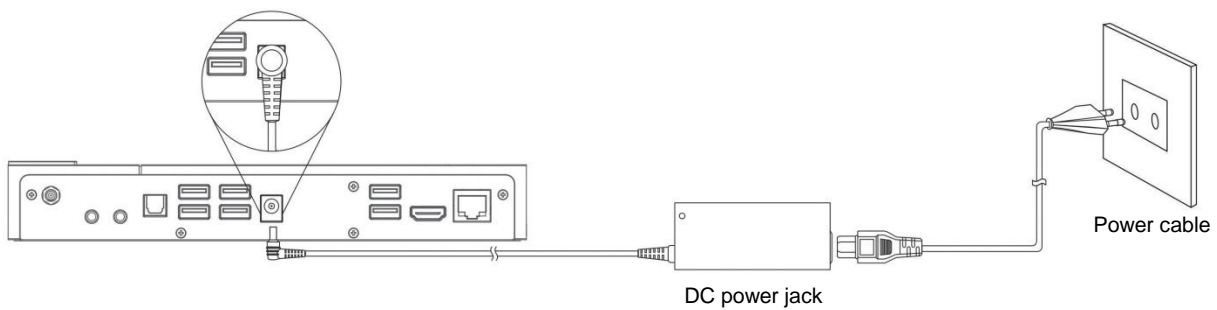


Amplifier connection (HDMI)



Note : your amplifier need to be HDMI pass-through

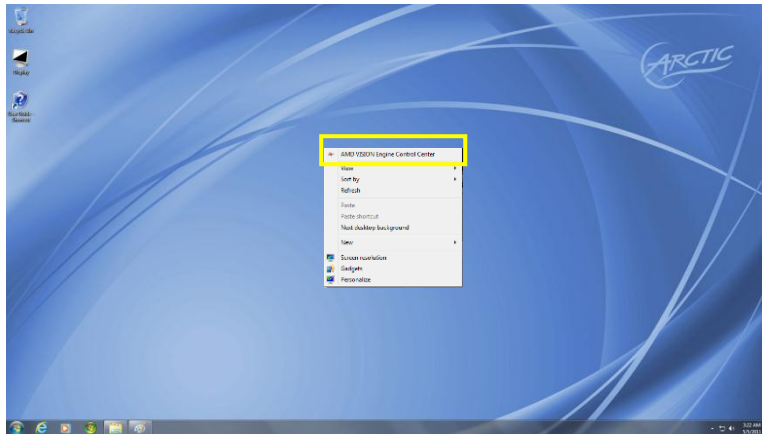
2.5 Connecting the Power Cord



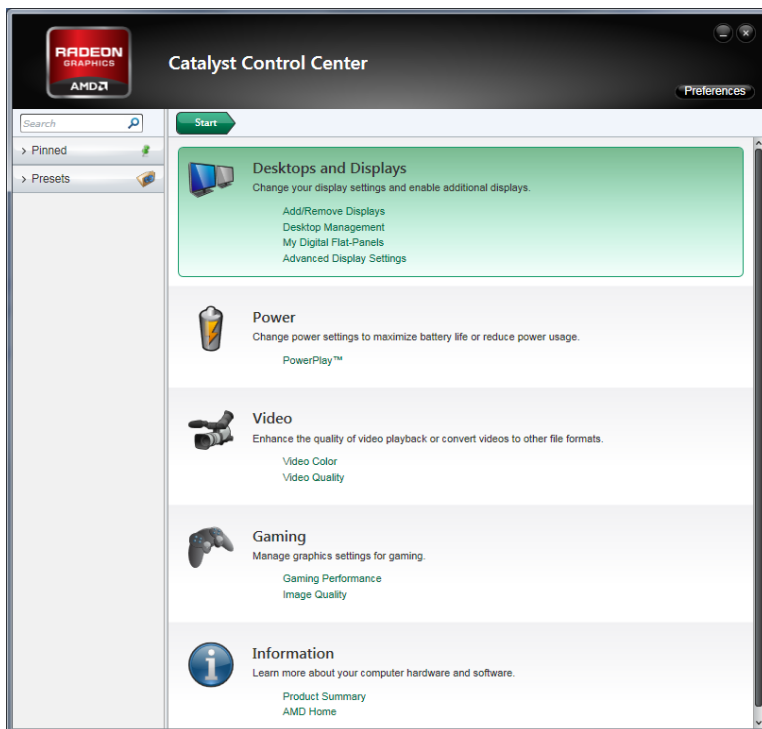
3.1 Enable Full Screen

In some case, when you connect the video display through HDMI cable, the displayed image does not fill up the full screen. This can be adjusted with the following steps:

1. Right click on the desktop and select “AMD VISION Engine Control Center” or select it from “Start Menu”.



2. Select “Desktops and Displays”.



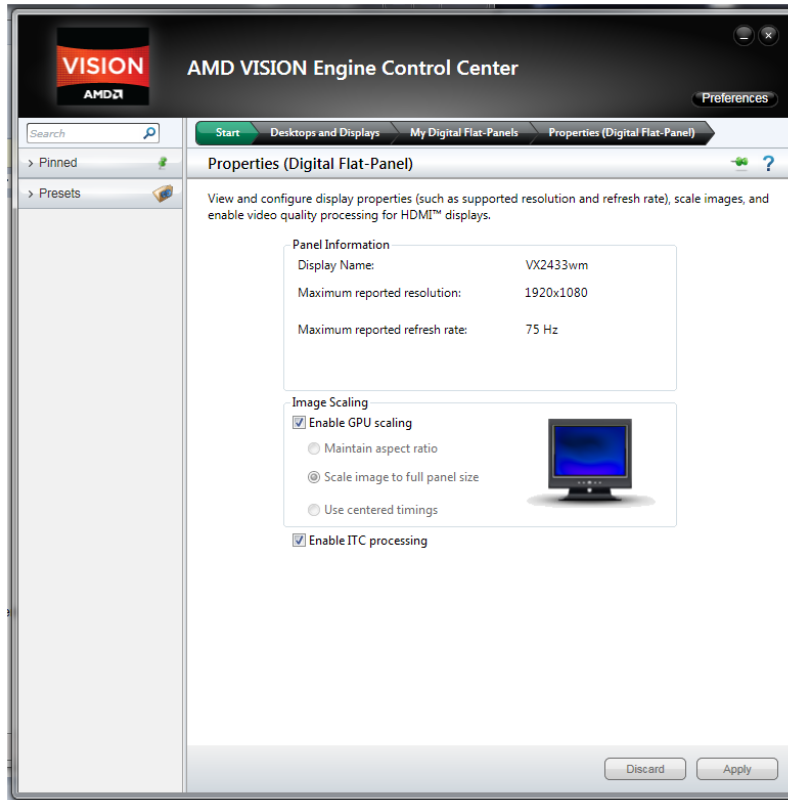
3. Select “My Digital Flat-Panels”.



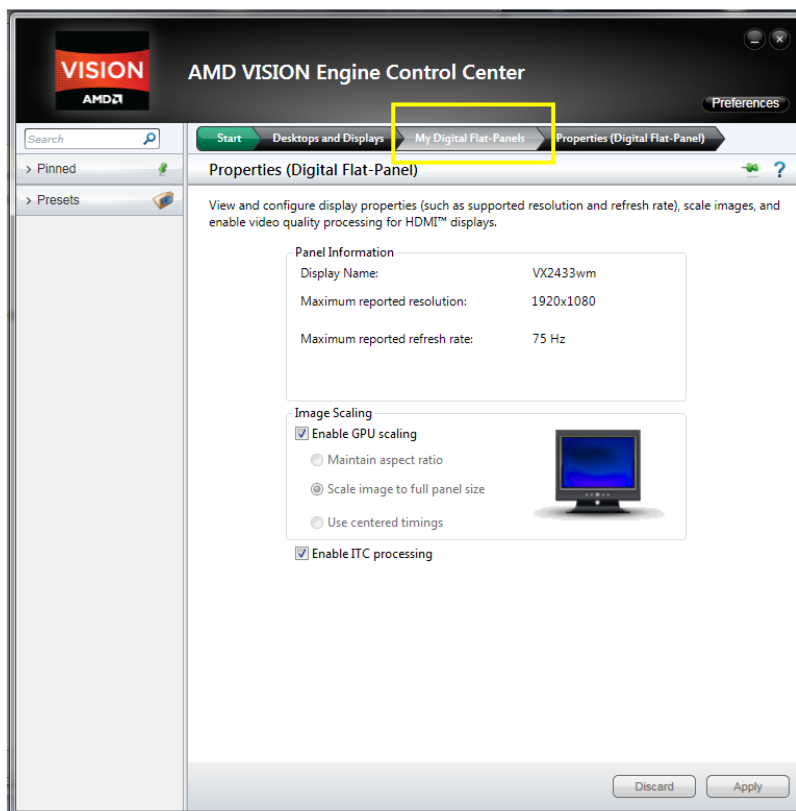
4. Select “Properties (Digital Flat-Panel)”.



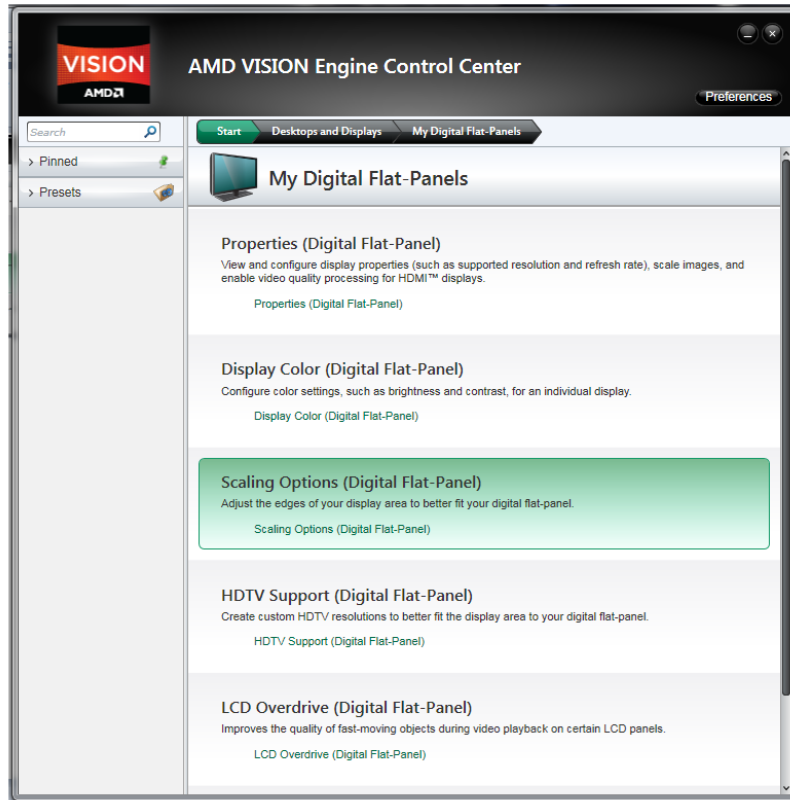
5. Tick “Enable GPU scaling” and select “Apply”.



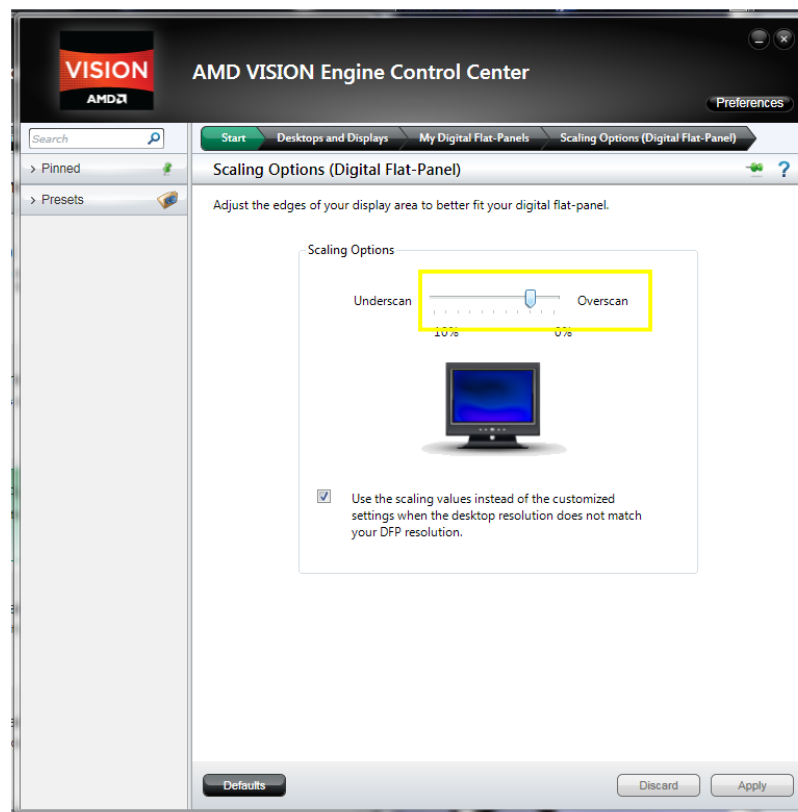
6. If the PC does not change to full screen after enabled the GPU scaling. Go to the tap above labelled “My digital Flat-Panels”.



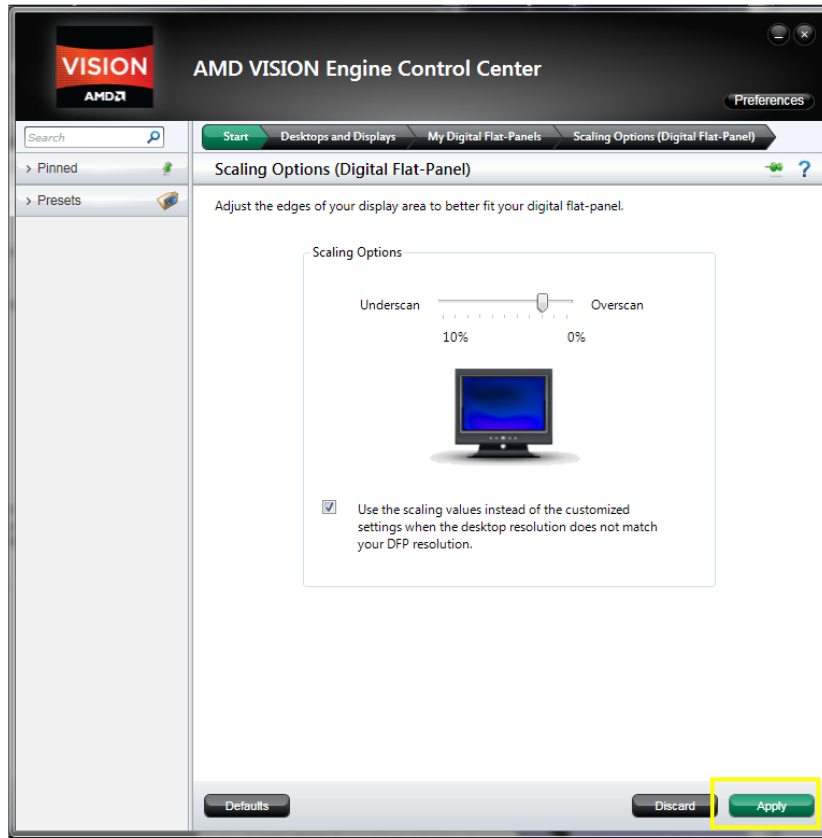
7. Go to the “Scaling Options (Digital Flat-Panel)”



8. Under the scan option, adjust the scale from 15% to 0% until full screen is achieved.



9. Click “Apply” to activate the full screen or “Discard” to go back to the last screen size



Note: In some cases, the image on the screen will still appear a bit blur when you reach the full screen display. This is due to a pixel ratio discrepancy with the TV. You then need to pull the overscan slider to 0% then refer to the TV manual to adjust the display area.

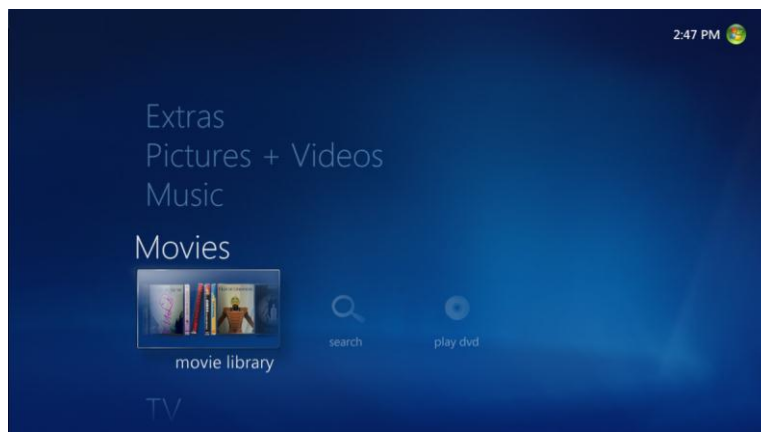
3.2 Play Movie Files

Video file types (format)	File name extensions
Windows Media file	.wm and .asf
Windows Media Video file	.wmv
Windows video file	.avi
Microsoft Recorded TV Show file	.dvr-ms
Movie file	.mpeg, .mpg, .mpe, .m1v, .mp2 and .mpv2 etc.

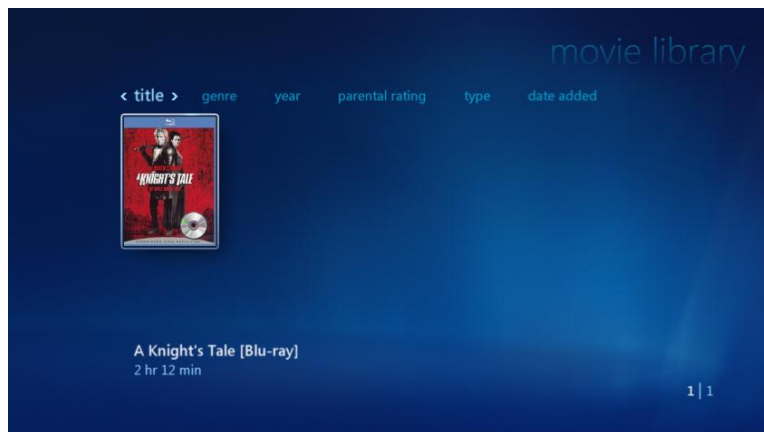
Codec pack has been pre-installed on your system which allows your MC101 to playback various video formats generally not supported by the operating system itself.

Note: You can extend the capabilities by installing additional codecs to play other file formats if needed.

Add the media (movie) file into the library:

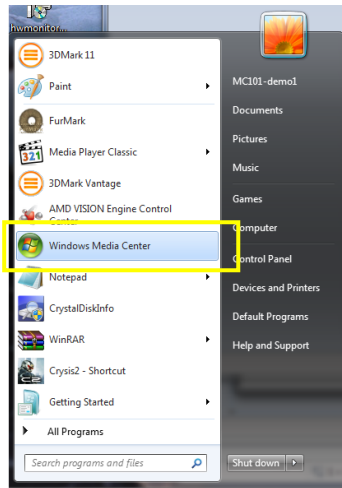






3. 3 Play Blu-ray Disc/ DVD in WMC

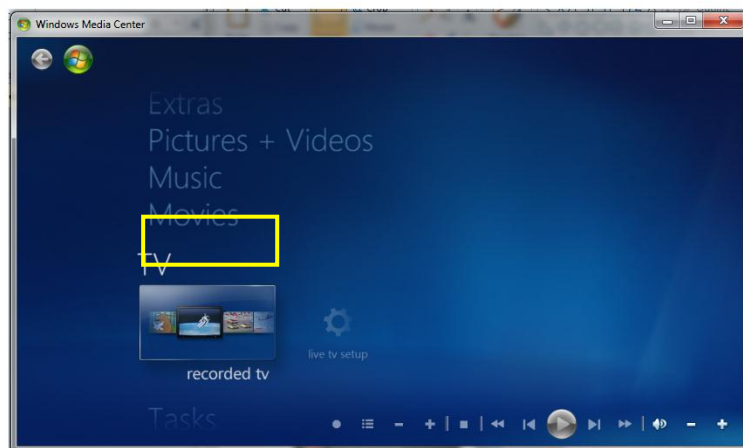
1. Install an external Blu-ray / DVD drive (Additional purchase of external optical drive required)
2. For Blu-ray playing, you will need to add additional software. This is usually provided with the drive. When installing, ensure that you include the Plug-in for Windows Media Center. If no plug in is available, below procedure will not be valid and you will have to use the third party software for Blu-ray playing.
3. Start Window Media Center from the “start” menu

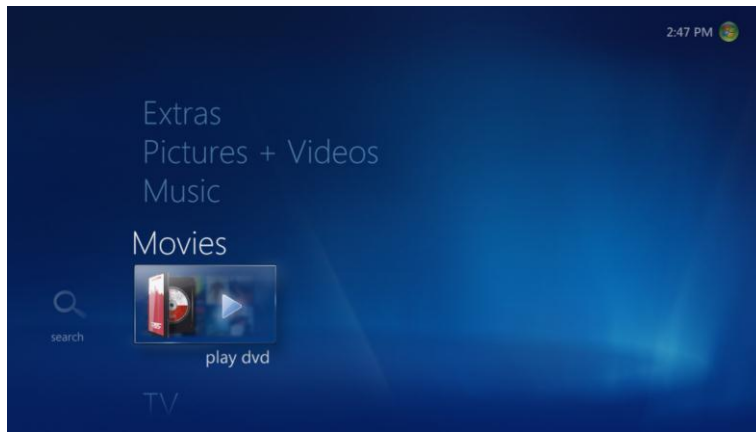


4. Wait for Window Media Center start up screen



5. On the main menu, select “Movies”





Note : Although the menu says Play DVD, it is also valid for Blurays if you have installed the plug-in in step 2

6. Your Blu-ray / DVD is now loading



7. The main menu of your Disk will now pop up, select the option and start enjoying your movie



3.4 Play Music Files

3.4.1 WMC:

Music file types (format)	File name extensions
Audio CDs	.cda
Windows Media Audio file	.asx, .wm, .wma, and .wmx
Windows audio file	.wav
MP3 audio file	.mp3 and .m3u

Codec pack has been pre-installed on your system which allows your MC101 to playback various audio formats generally not supported by the operating system itself.

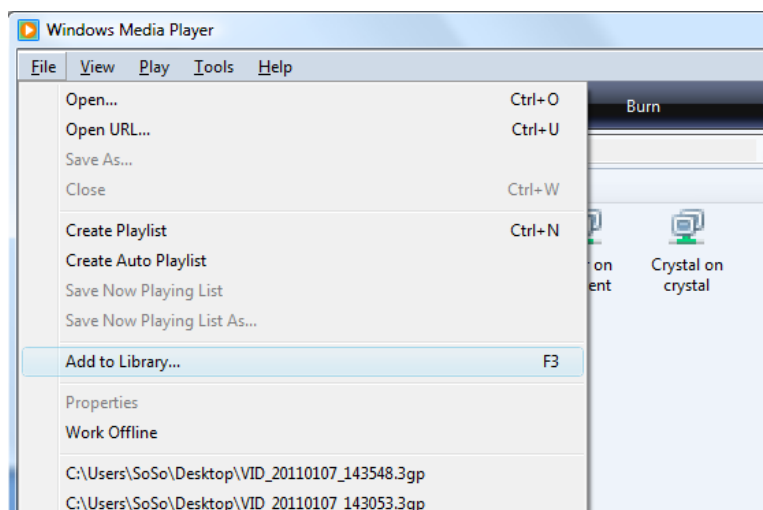
Note: You can extend the capabilities by installing additional codecs to play other file formats if needed.

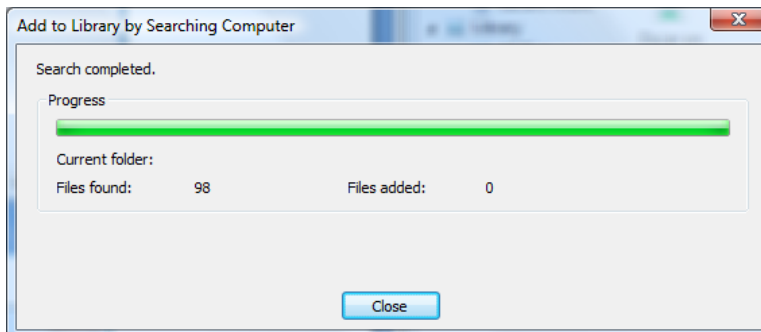
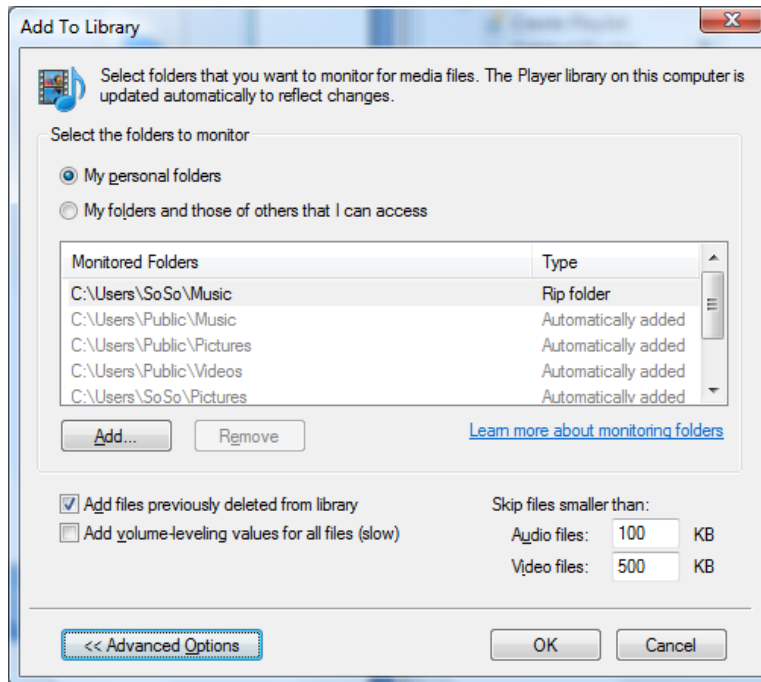
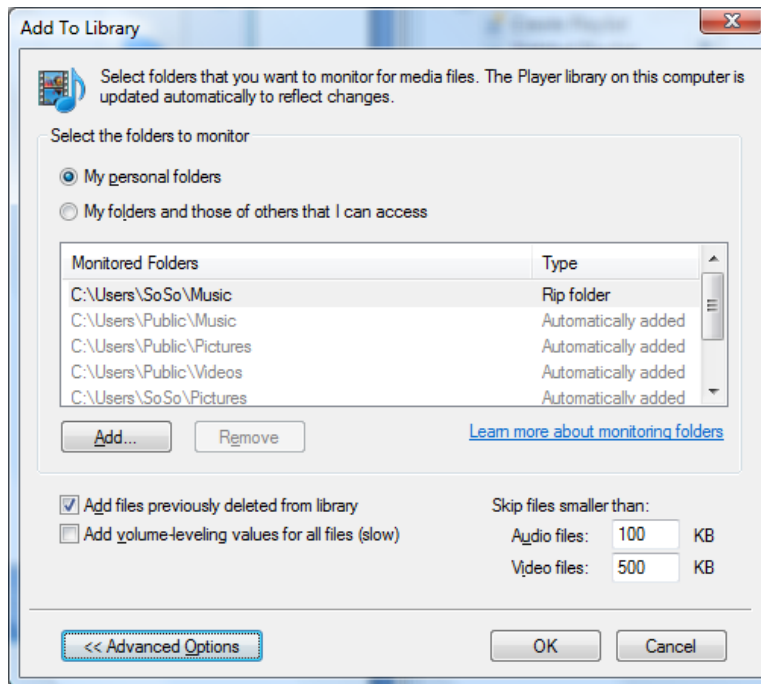
Add the media (audio) file into the library:



3.4.2 WMP:

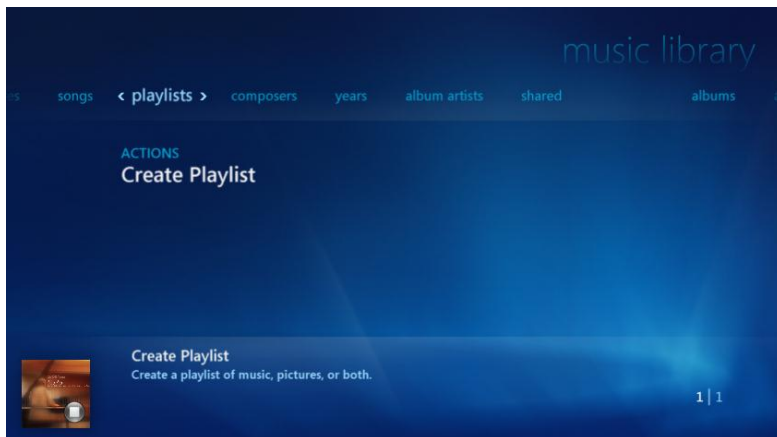
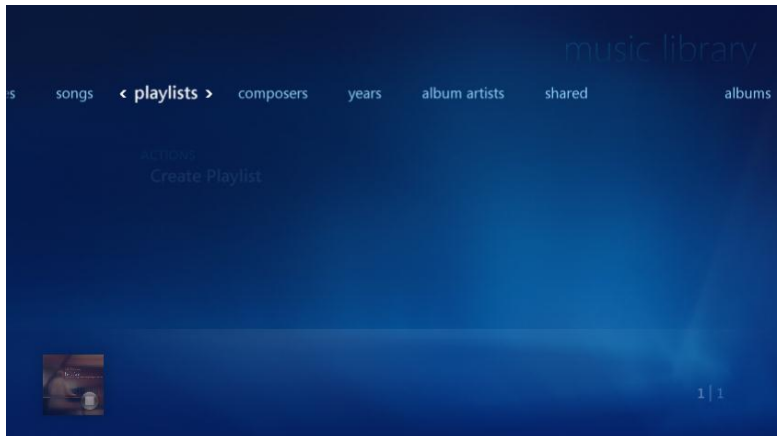
Add the media (audio) file into the library:

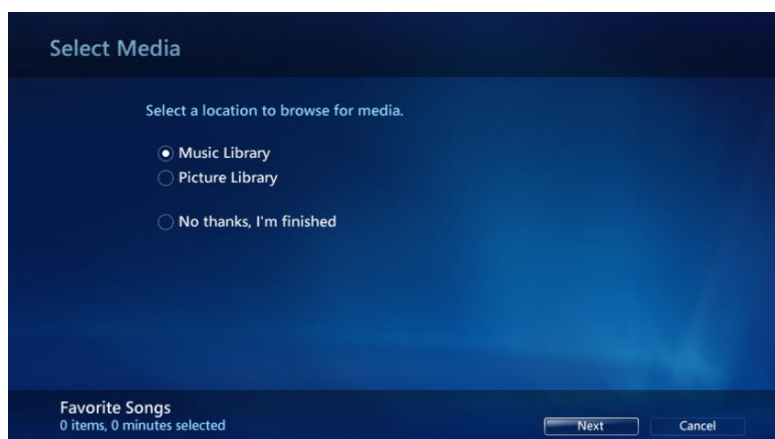
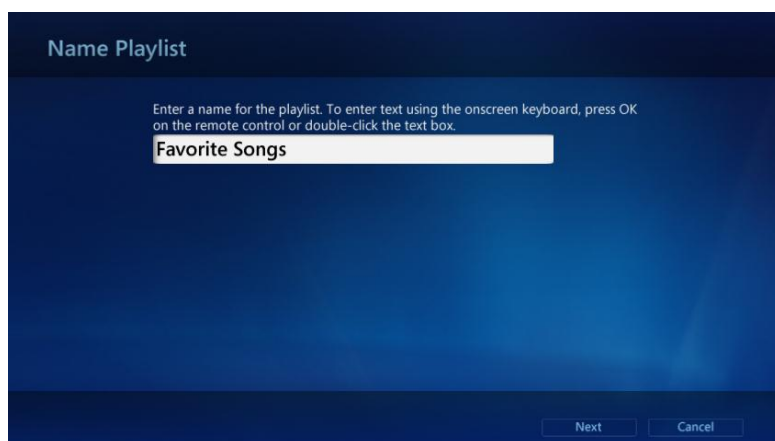
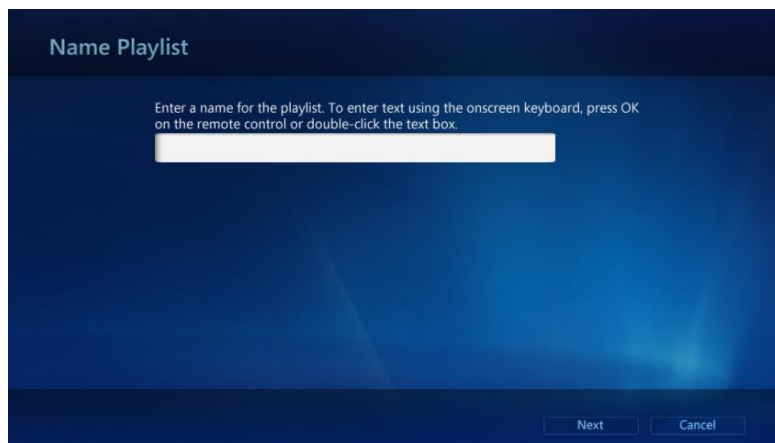


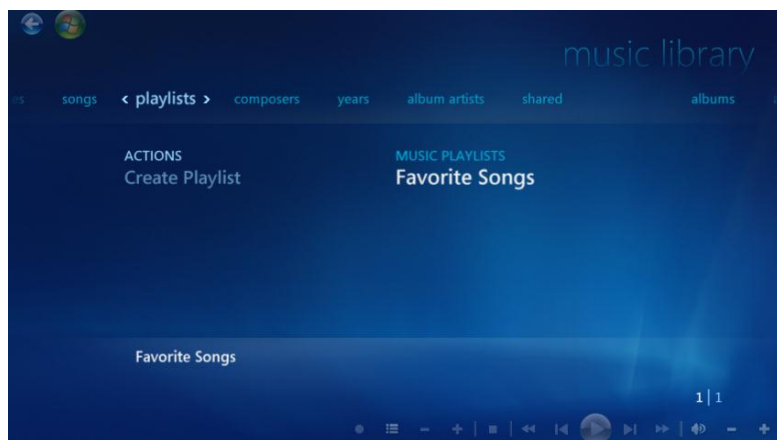
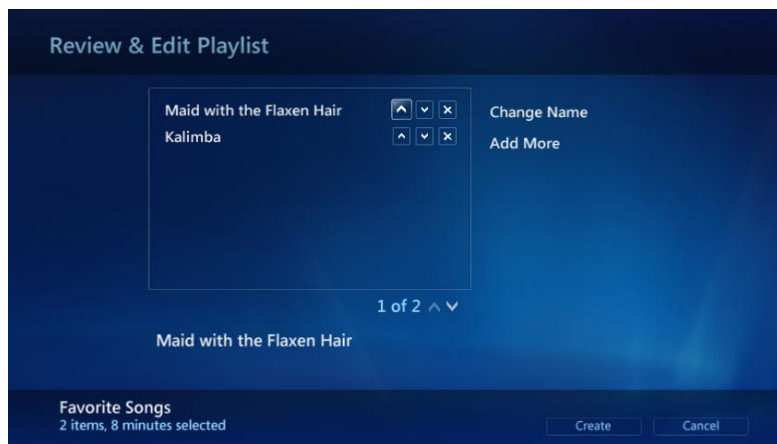
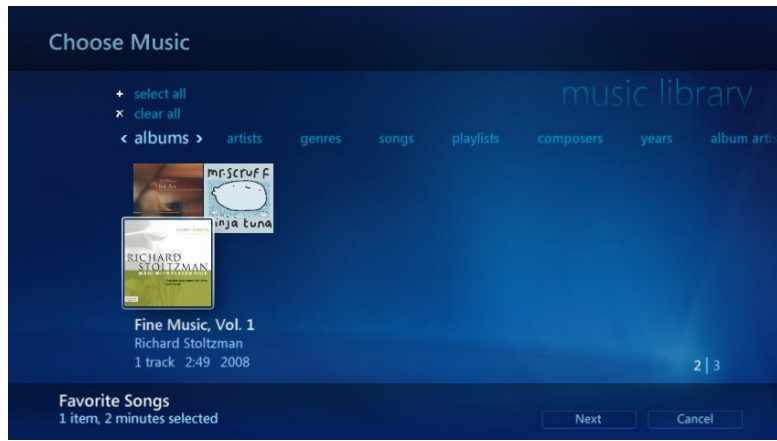


3.5 Create Playlist

3.5.1 WMC:

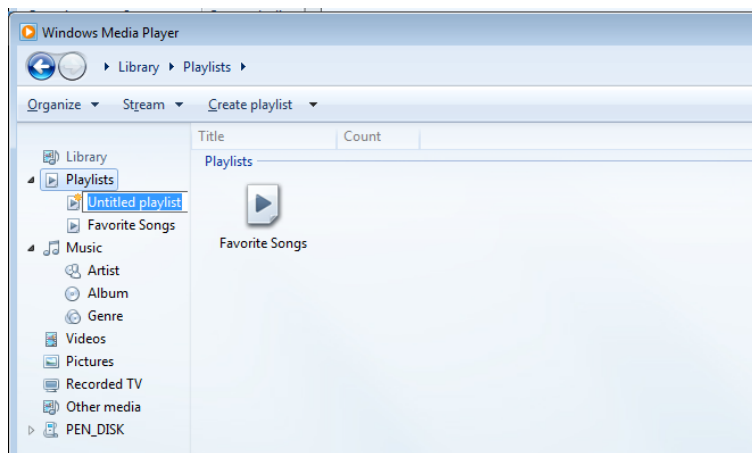
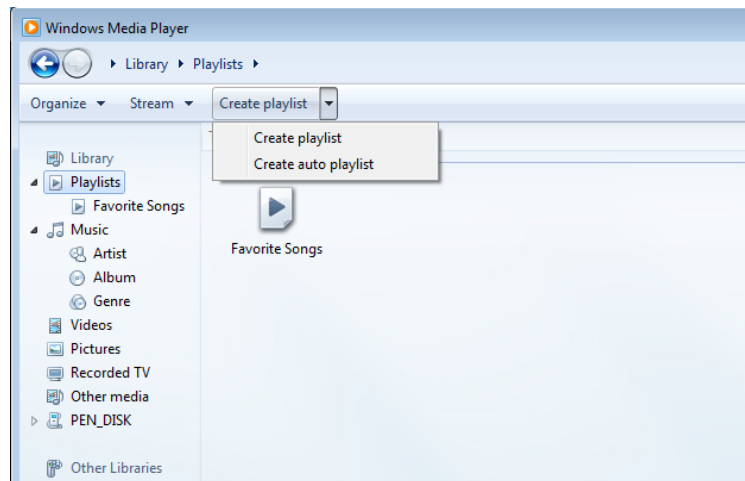




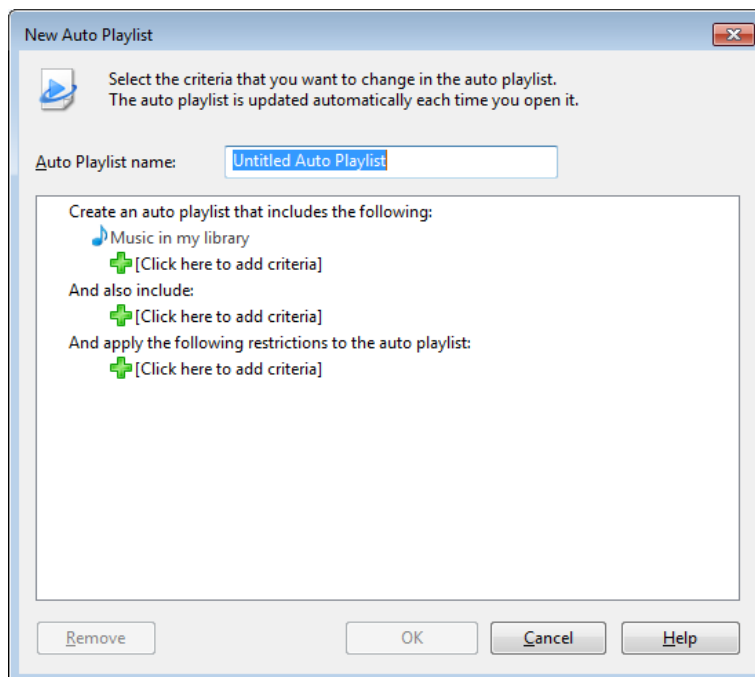


3.5.2 WMP:

Select "Create Playlist"



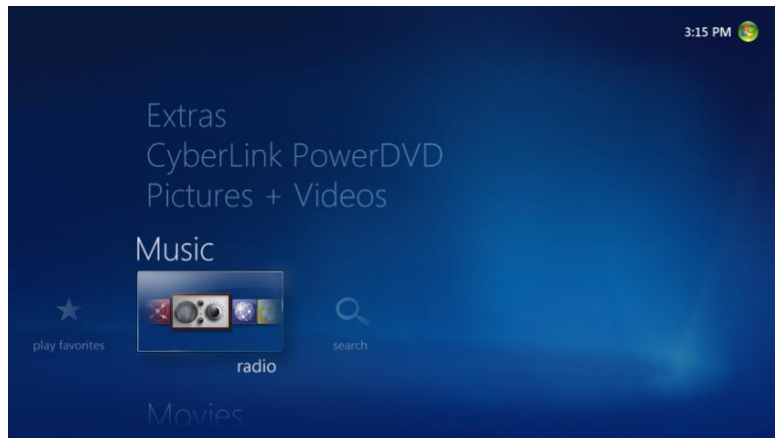
Select "Create auto playlist"



3.6 Add Radio Station

3.6.1 WMC:

A. To find and listen to an FM radio station:



1. On the start screen, scroll to Music, click radio.
2. To set Windows Media Center to find a radio station:
 - Under Seek or Tune, click - or + to find available stations.
 - If you know the frequency of the station, enter the numbers using the numeric keypad on the remote control or on the keyboard.
3. To control playback, use the on-screen transport controls in the bottom right of the screen (this includes changing channels, adjusting volume, and pausing or stopping playback).



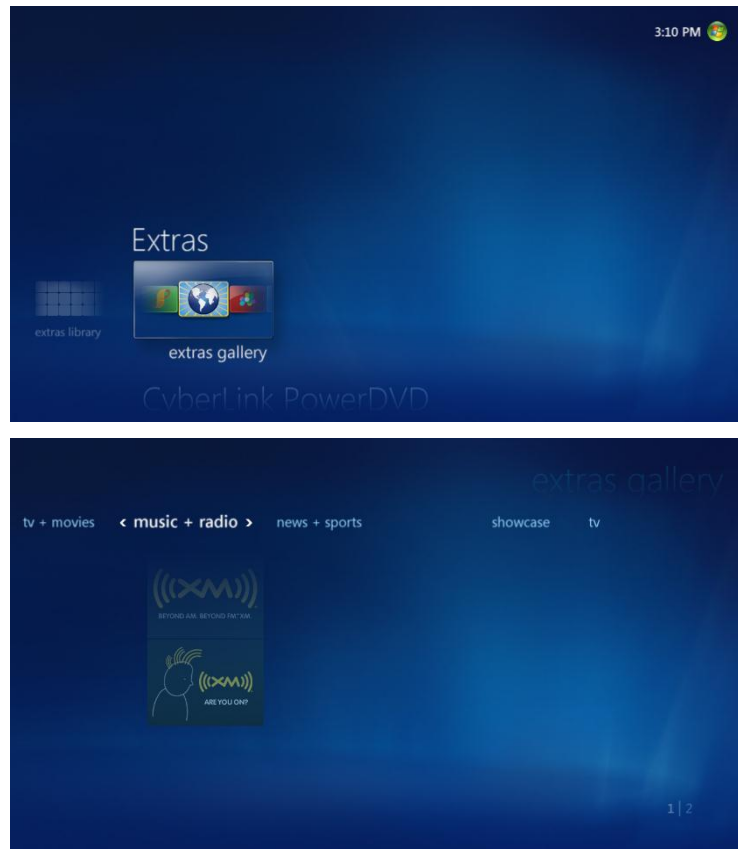
- | | | |
|--------------------|------------------|-------------------|
| ① Record | ⑤ Rewind | ⑨ Fast Forward |
| ② Channel Decrease | ⑥ Skip Backward | ⑩ Mute |
| ③ Channel Increase | ⑦ Pause and Play | ⑪ Volume Decrease |
| ④ Stop | ⑧ Skip Forward | ⑫ Volume Increase |

You must configure the tuner for use with Windows Media Center before FM radio will display by doing the following:

1. On the start screen, scroll to Tasks, click settings, click General, click Windows Media Center Setup, and then click Set Up TV Signal.
2. Proceed through set up to configure your tuner. The radio option should appear after you have configured your tuner.

B. To find and listen to Internet radio

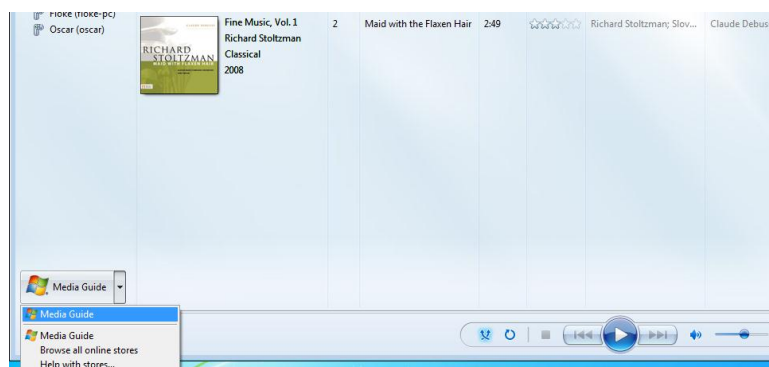
1. On the **start** screen, scroll to **Extras**, click **Extras gallery**, and then click **music + radio**.



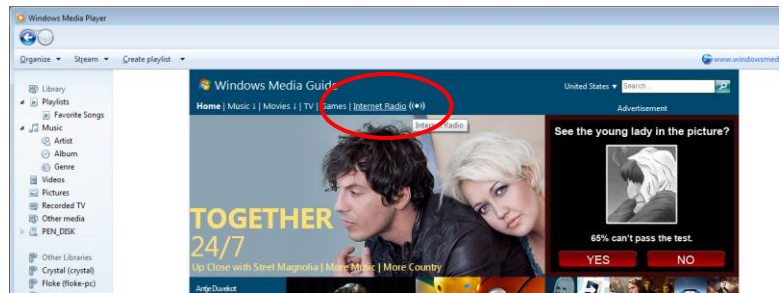
3.6.2 WMP:

A. Listen to internet radio

1. Look down on the left side and click on Media Guide

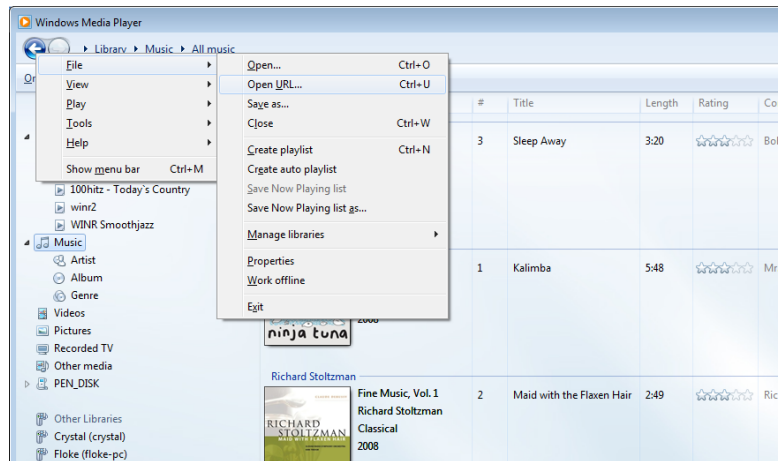


2. Click "Internet Radio" at the top of the menu

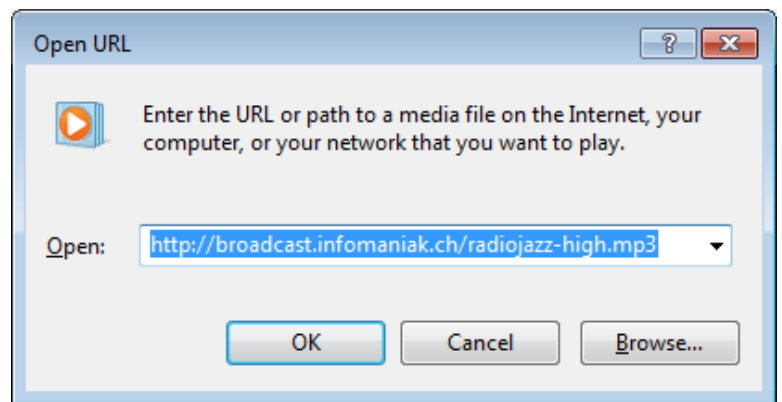


Add internet radio station from URL

1. File>Open URL



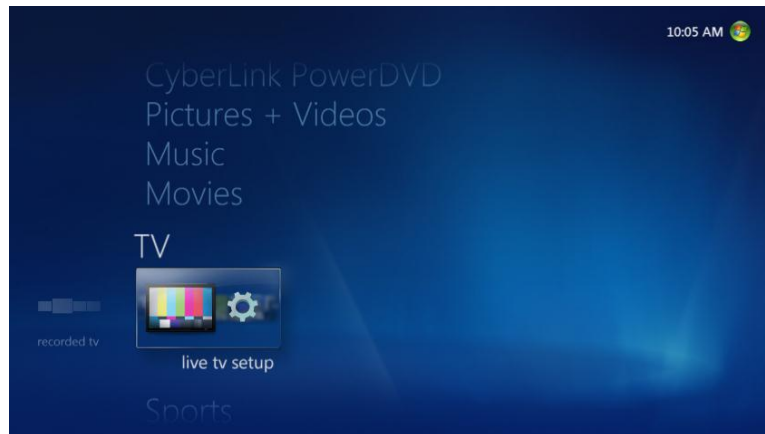
2. Copy the internet radio URL and open. You can go onto www.listenlive.eu to get URLs of many radios



The URL of the different radio stations can be found on the radio websites. The website Listenlive.eu (<http://listenlive.eu>) also list a lot of URL for the different Europeans countries.

3.7 Scan TV Signal

1) For first time user, go to 'live tv setup':





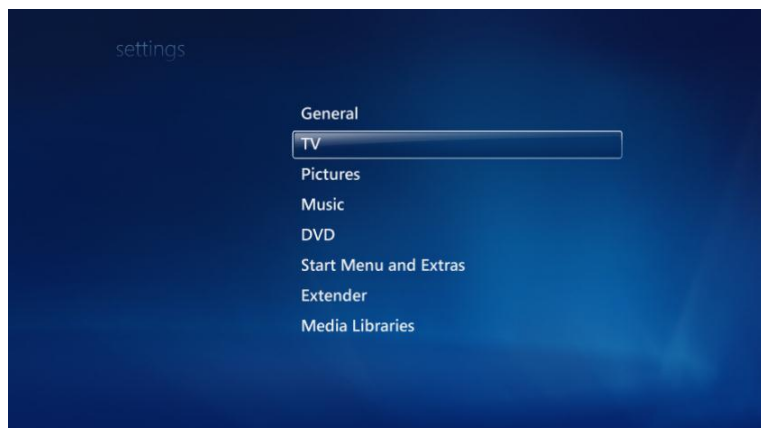
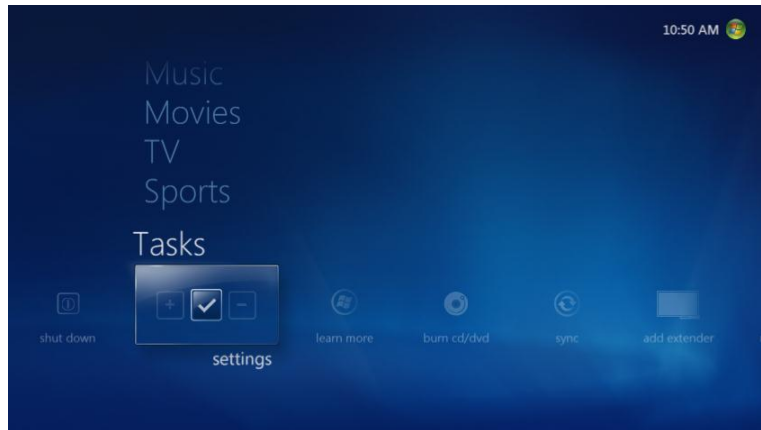


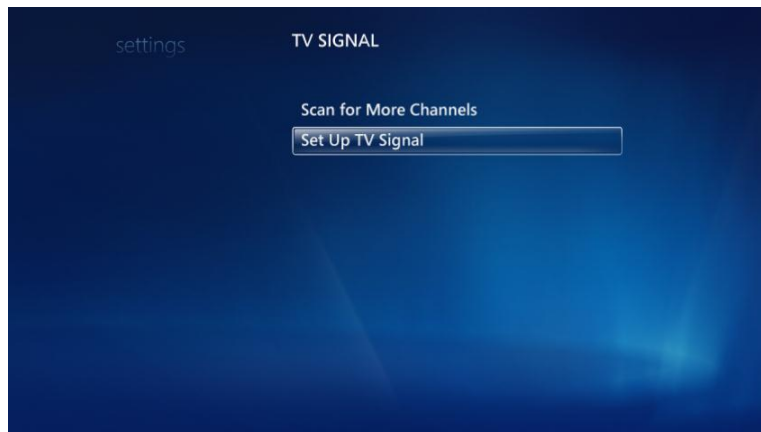
For the next time, go to setting and change the configuration or scan TV channel:

Note: This procedure apply in the following cases:-

- You changed location of the MC101
- You change Antenna
- New channels become available in your area

There is no need to scan the channel each time you want to watch TV.





Note: When TV Signal is set, go back to Main menu to start watching TV.

2. To watch TV, go to “TV guide” in the main menu



Choose the program you want to watch in the guide, click on the title to start watching TV



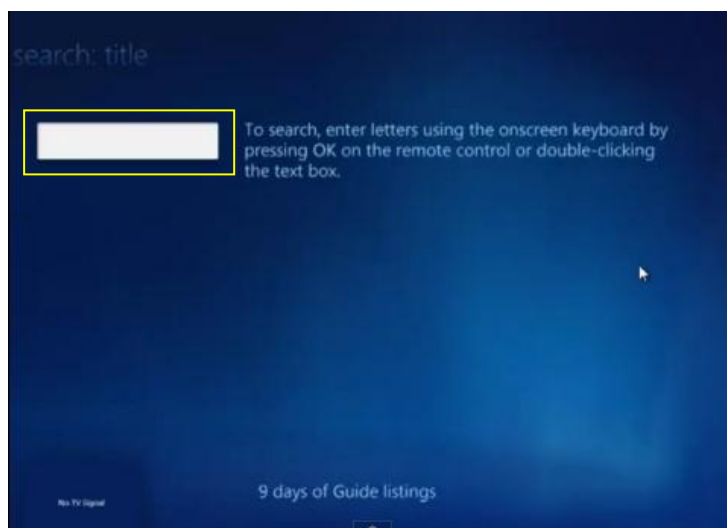
3. To search TV program, go to the main menu and go to TV “Search”



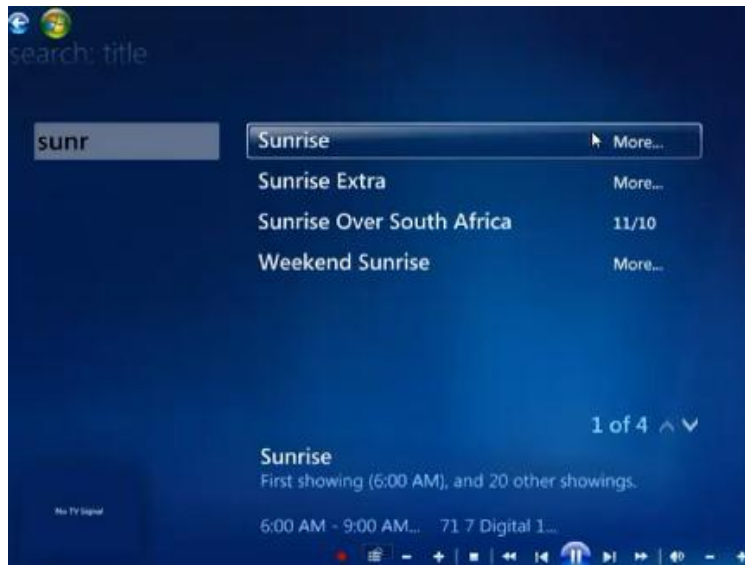
Choose type of search, for example, search by 'Title'



Type in the title of the program



Select and click on the program you are searching for

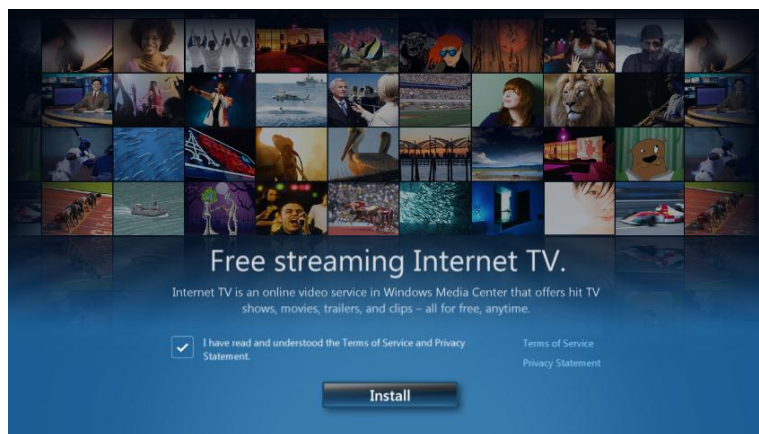
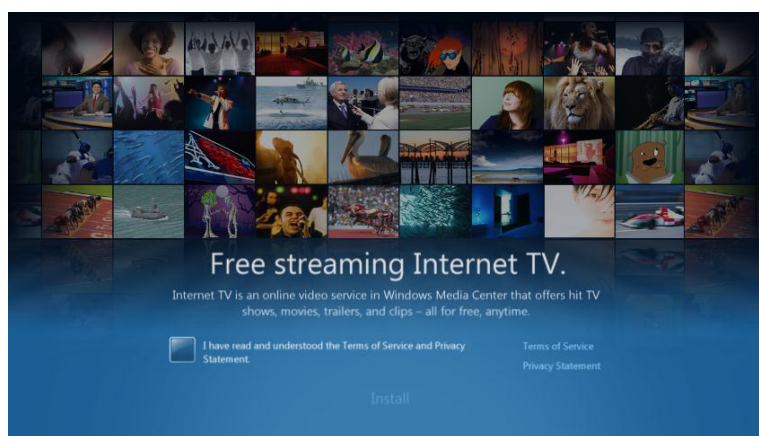


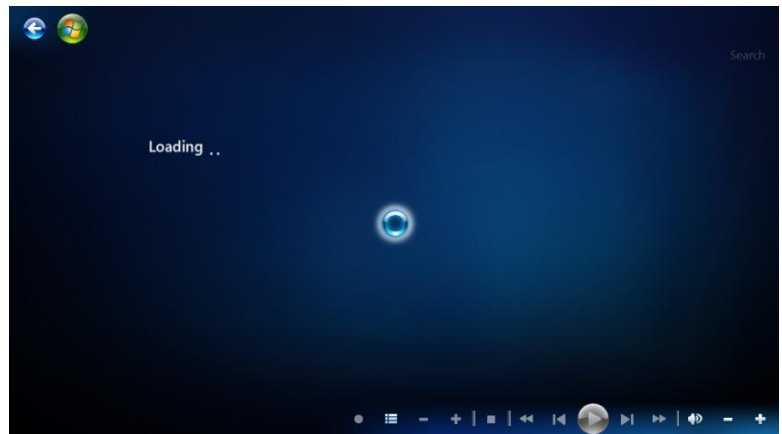
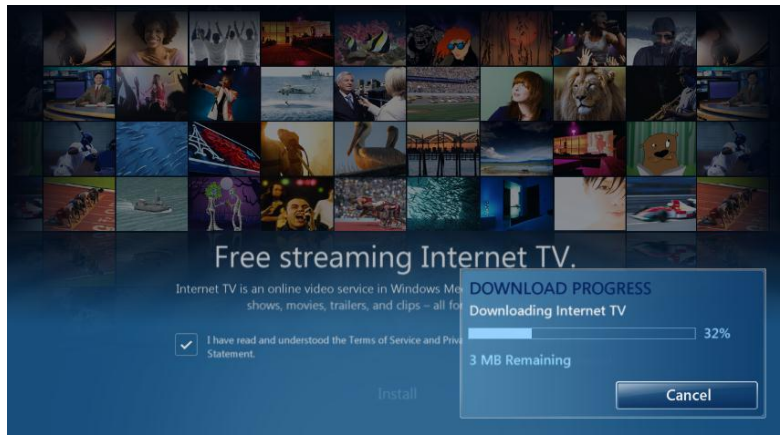
You can now select the showing program to start watching or you can record this program by pressing “record”.



Note: You can watch all your record TV in main menu >TV >Record TV

3. 8 Install Internet TV in WMC (only available for the U.S. region)

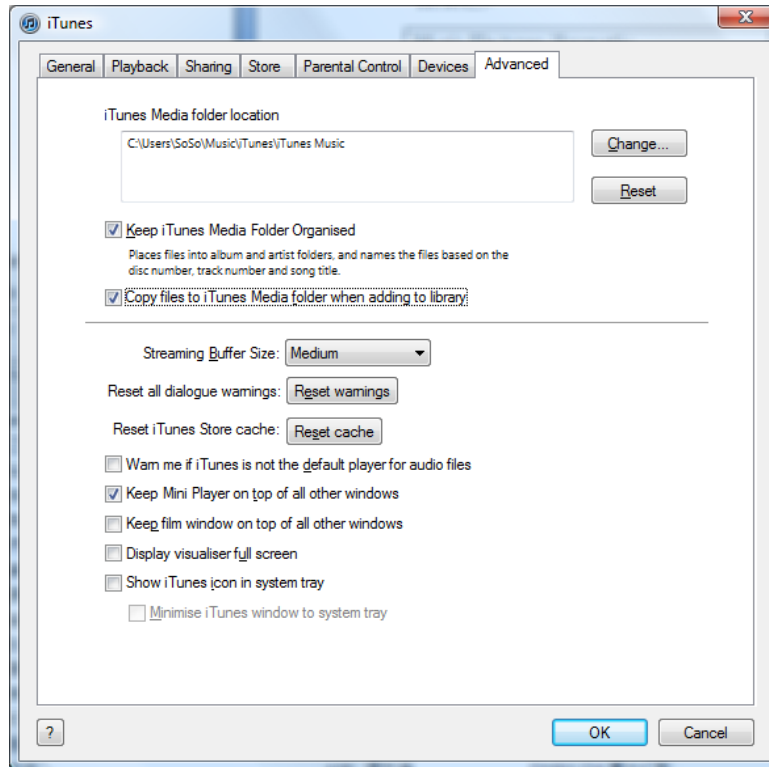




3.9 Migrate iTunes Library from another Computer

Note: users must first have iTunes installed on their system

1. In iTunes, select the "Advanced" Tab in "Edit>Preferences"
2. In the Advanced section, make sure "Keep iTunes Music folder organized" and "Copy files to iTunes Music folder when adding to library" are checked.

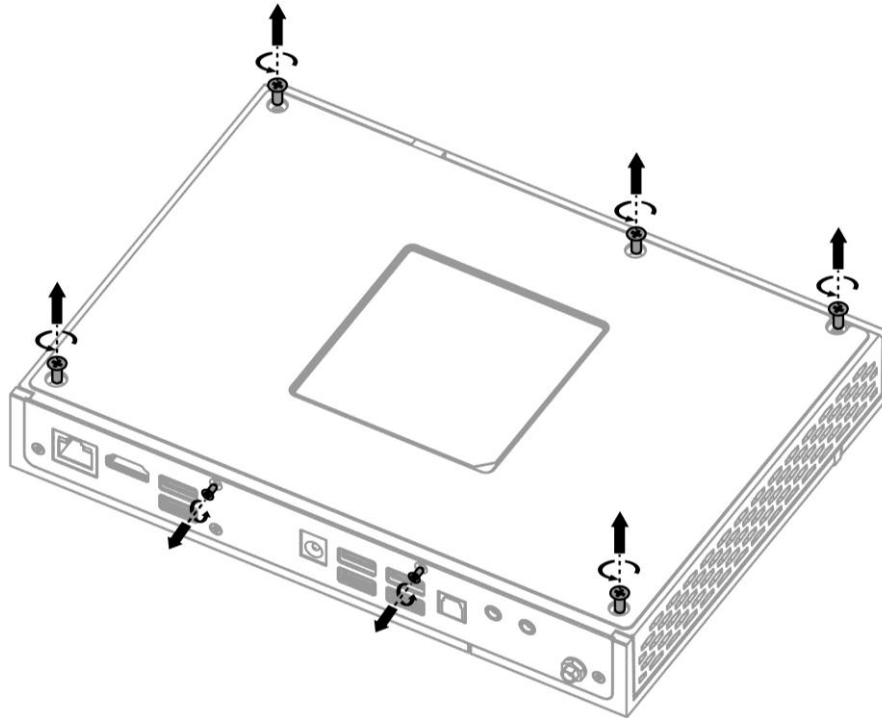


3. Then, in the "iTunes Music folder location" area, click on the Change... button, and enter the new location where you want to move your library to.
4. Re-locate the music folder to the new location from the other computer
5. Copy the folder [Album Artwork], [iTunes Music Library.xml] and [iTunes Library.itl] from the old computer from "\Users\[your username]\My Music".
6. Paste them to your new location (anywhere).
7. Hold down the Shift key when you launch iTunes.
8. When it asks what library to use, click the "Choose Library..." button and browse to the iTunes Library.itl file on the new location.

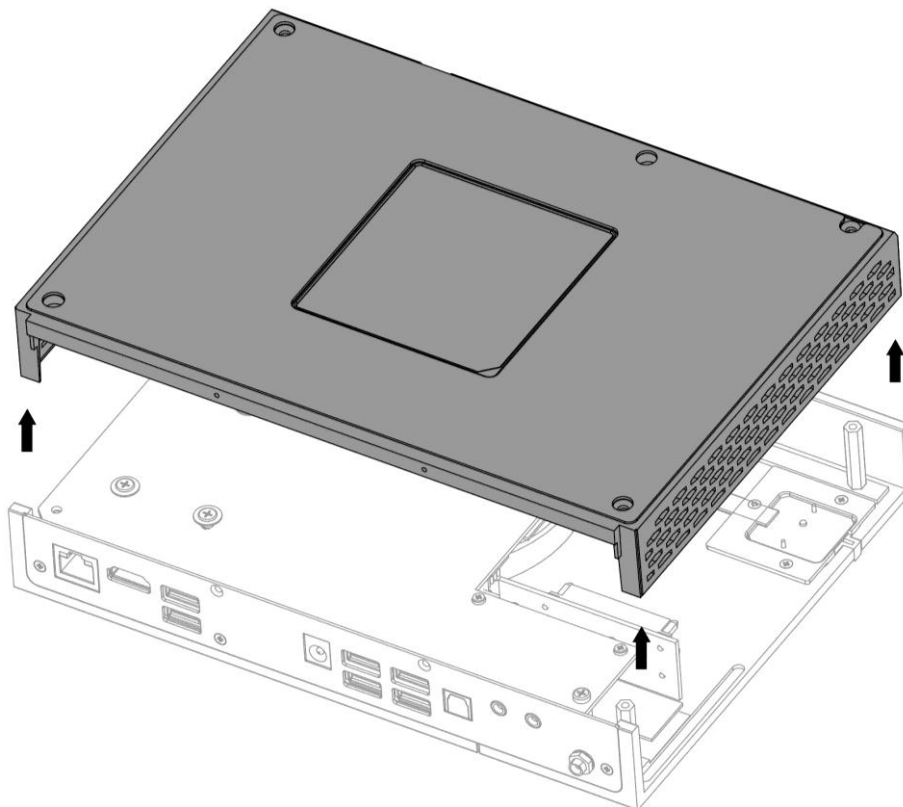


4.1 Change Hard Disc Drive (HDD)

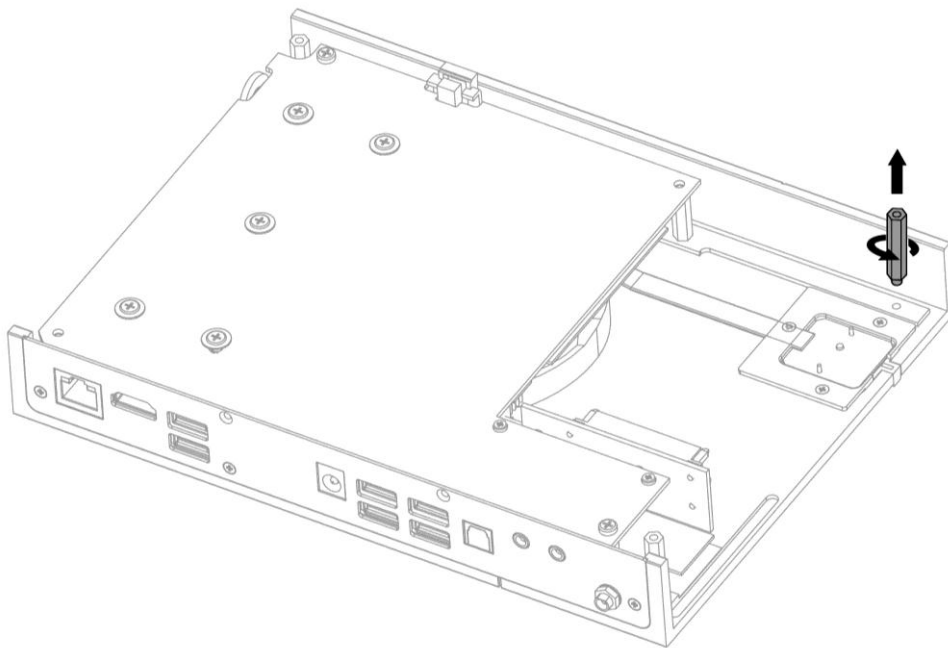
Step 1: Remove 7 screws



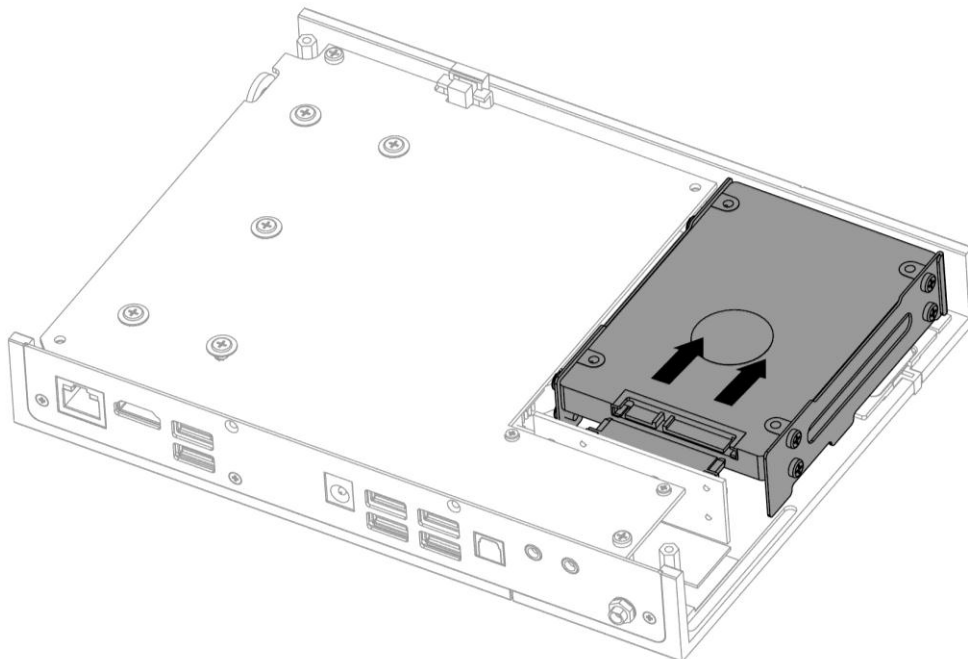
Step 2: Lift and remove back cover



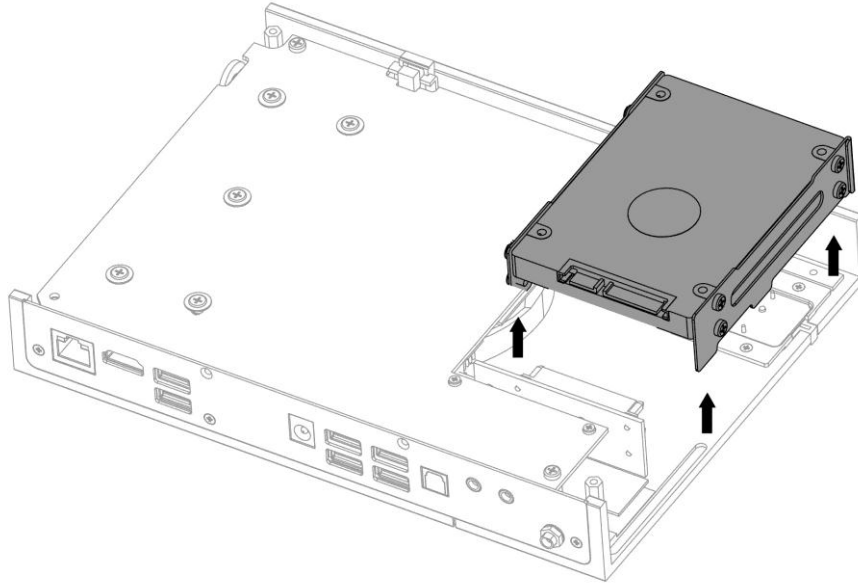
Step 3: Remove hexagonal pole. (note - for Barebone version, go directly to step 6)



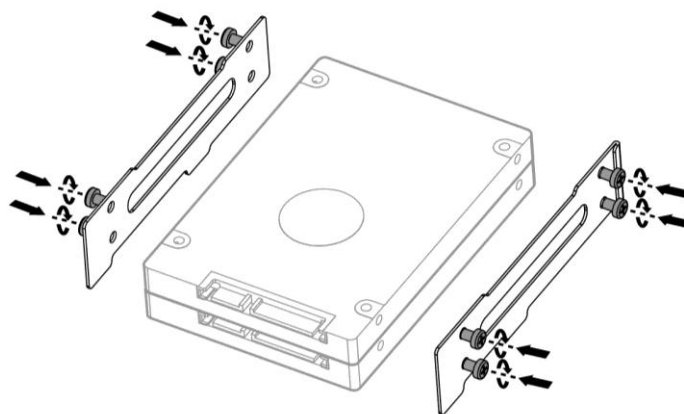
Step 4: To add HDD, slide toward the front and unplug HDD case then lift



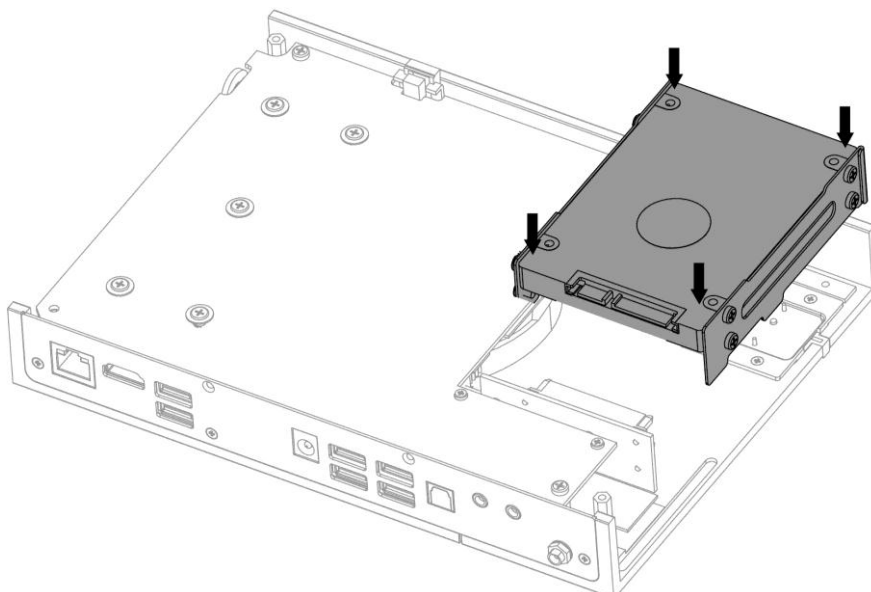
Step 5: Remove HDD case to add HDD



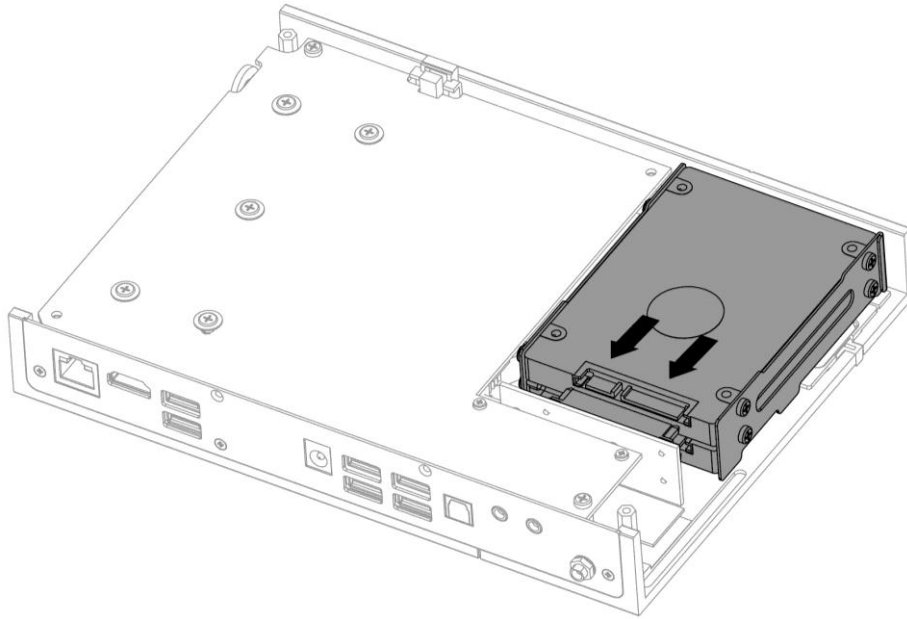
Step 6: Assemble HDD with mounting (for Barebone version, parts are included in the pack)



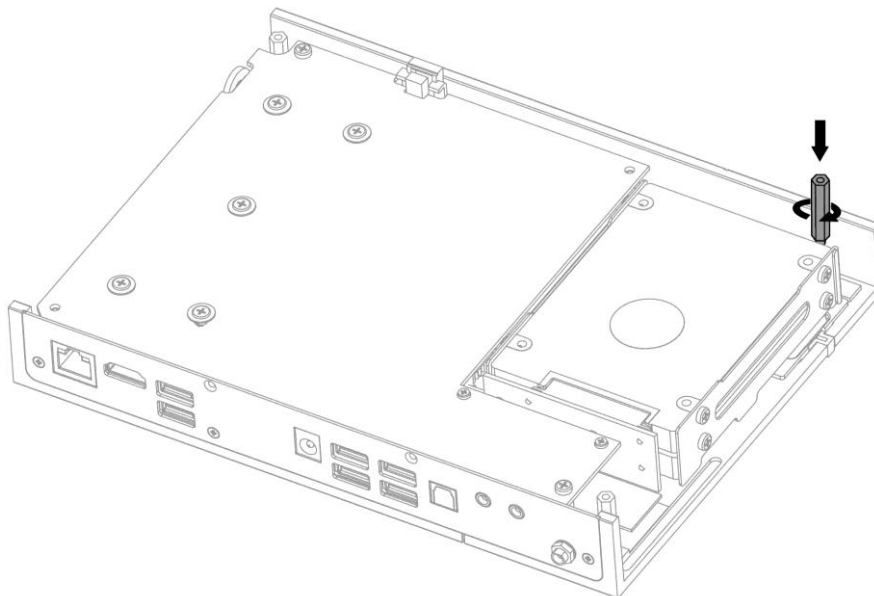
Step 7: Insert HDD case back into the MC101



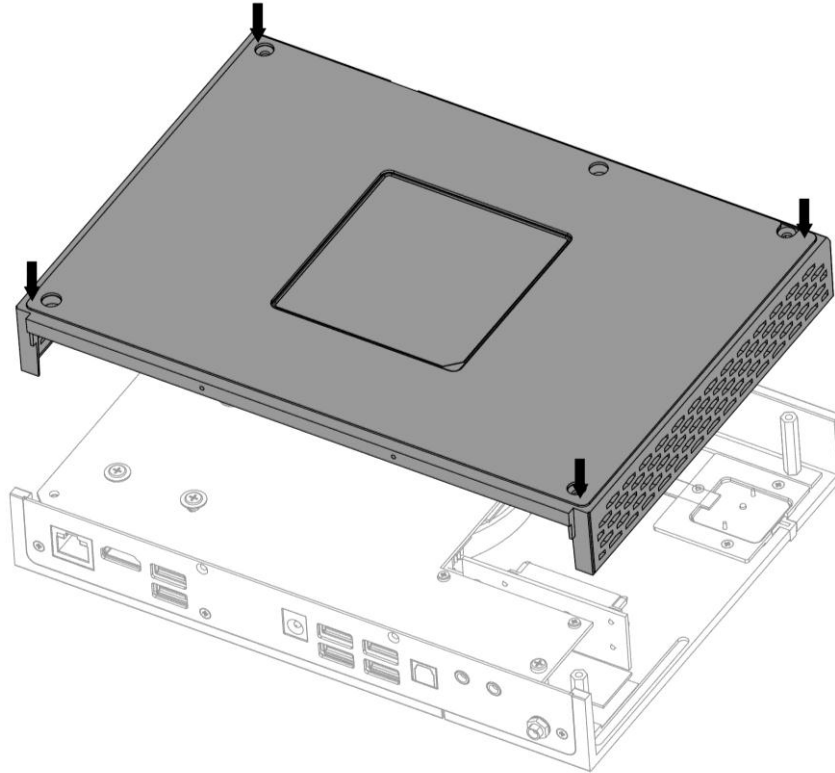
Step 8: Slide HDD case toward the back and plug it into the connection slot



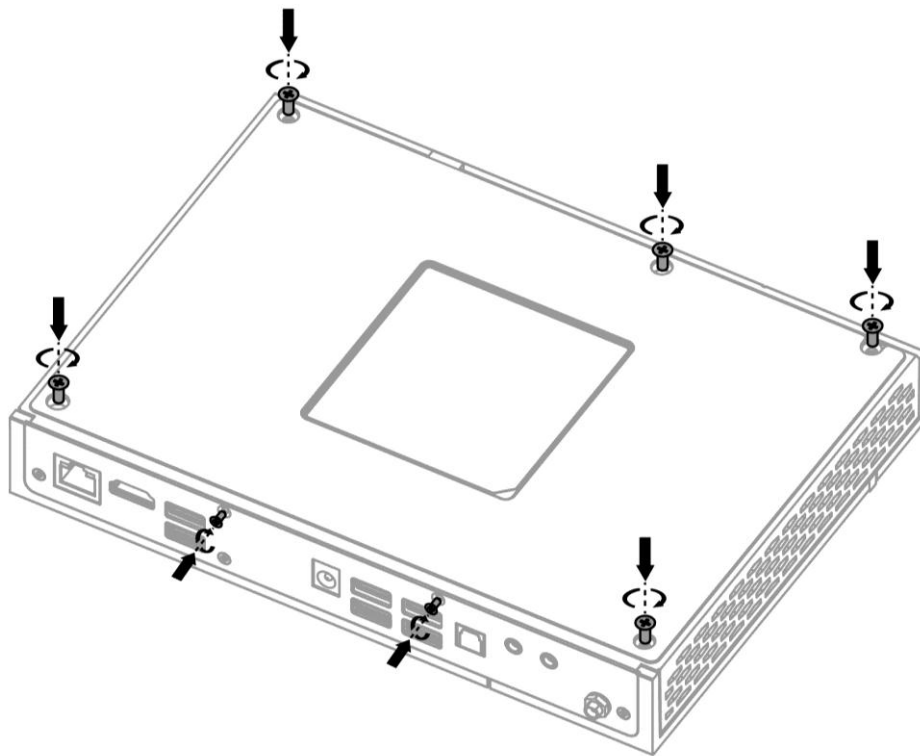
Step 9: Screw the hexagonal pole back into the case



Step 10: Replace the back cover

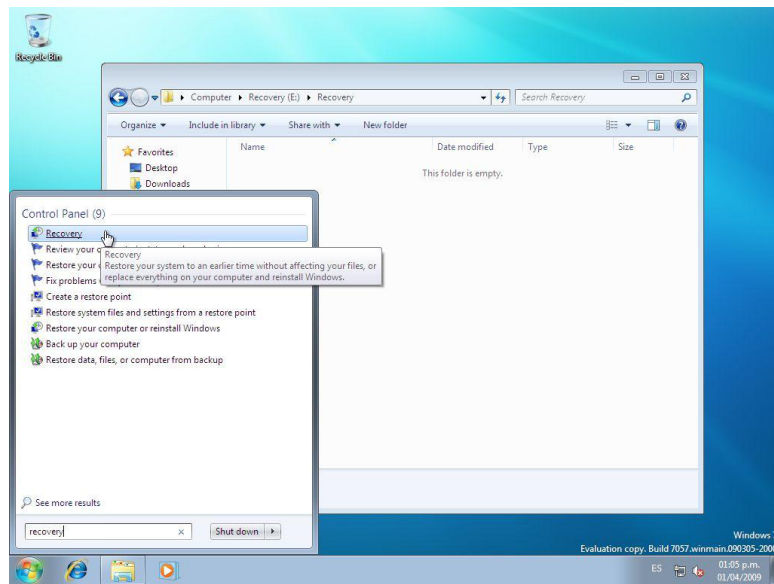


Step 11: Assemble and fix the 7 screws back in place



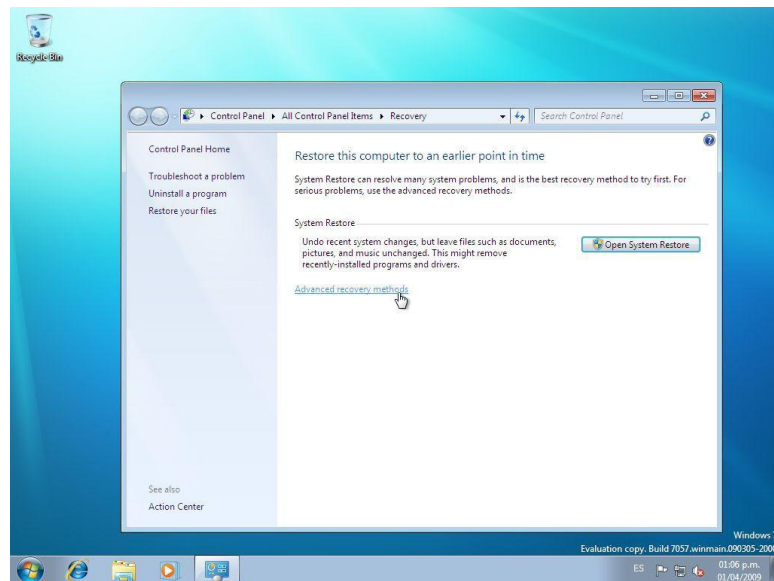
4.2 Recovery Using the Recovery in Control Panel

1. Press the **Start Button** and in the search input area, type "Recovery".

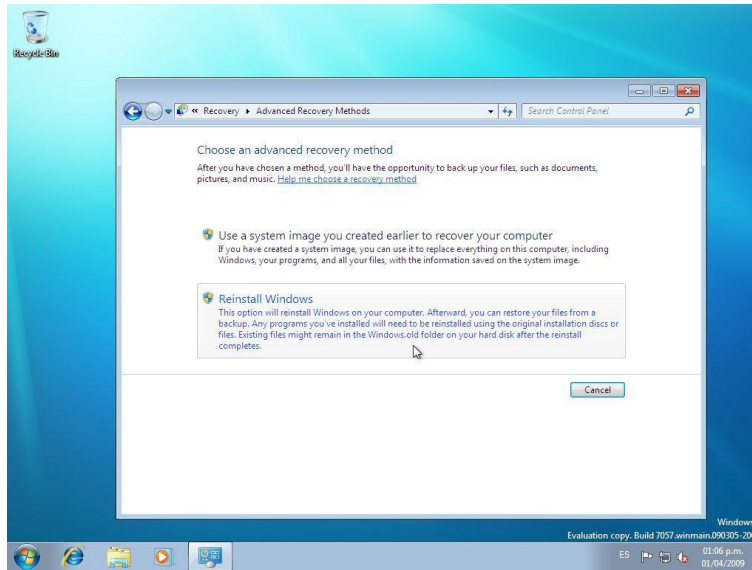


2. From the search results, launch the Recovery control applet.

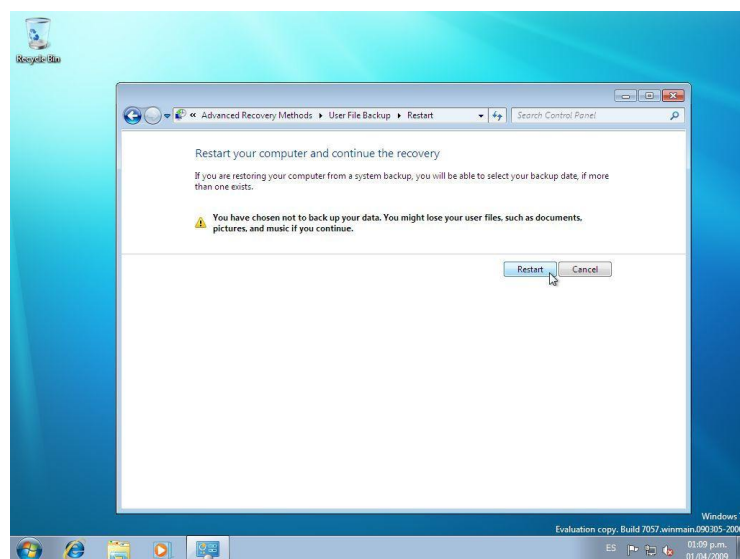
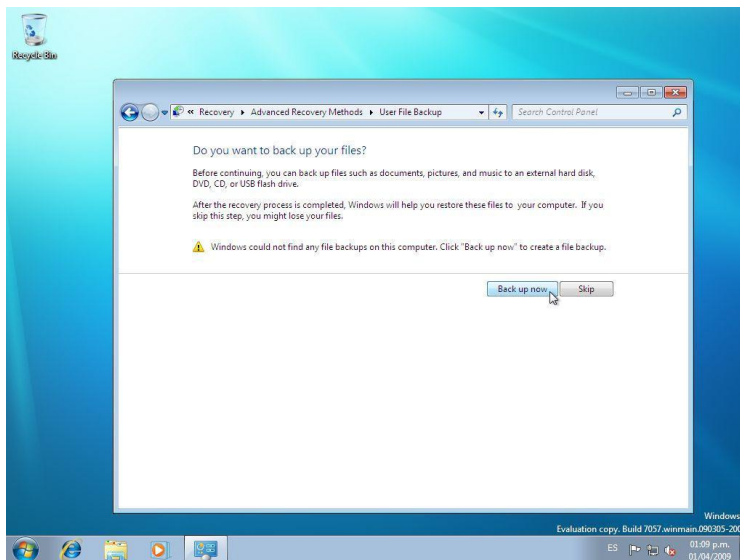
3. Select the "Advanced recovery methods" option.



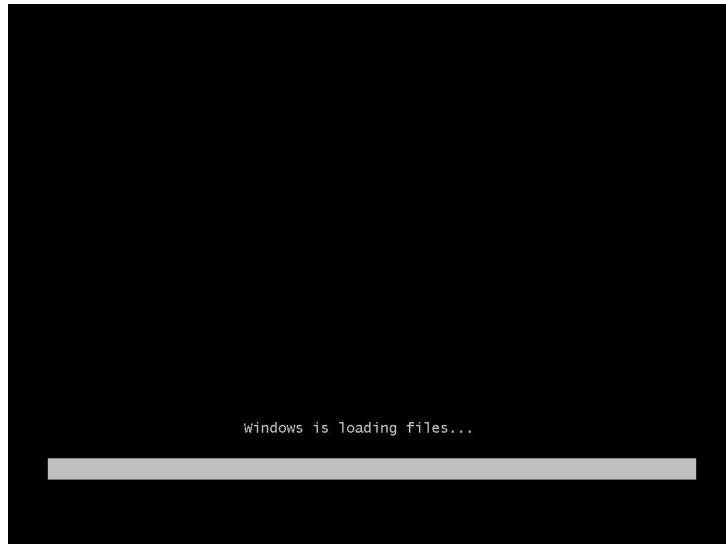
4. Select "Reinstall Windows" option.



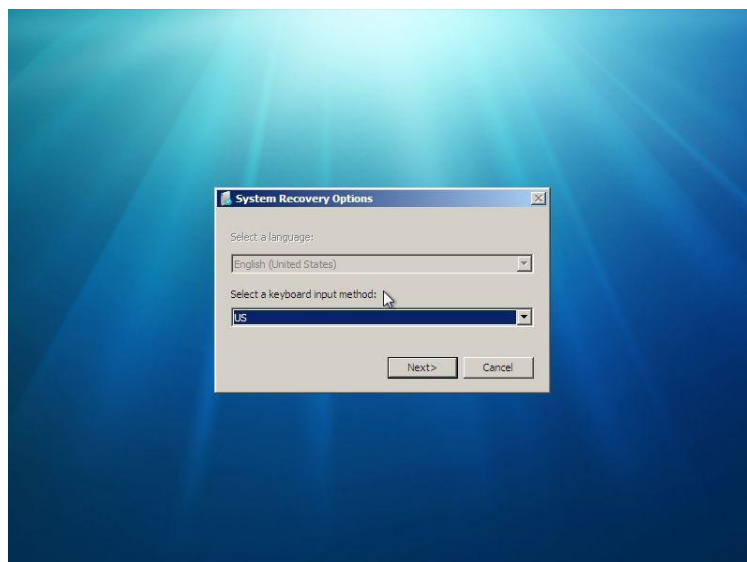
5. Follow the on-screen instructions to back up your files. Then, the computer will restart.



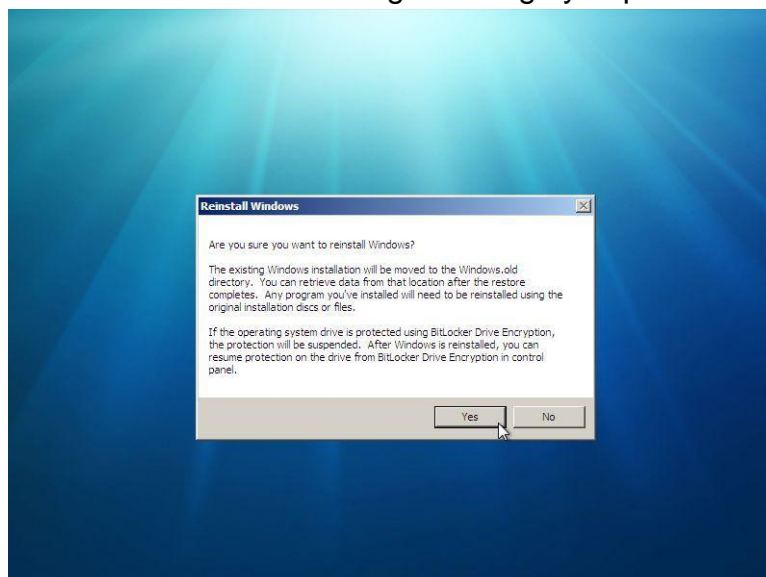
6. Verify that the computer starts in Windows RE.



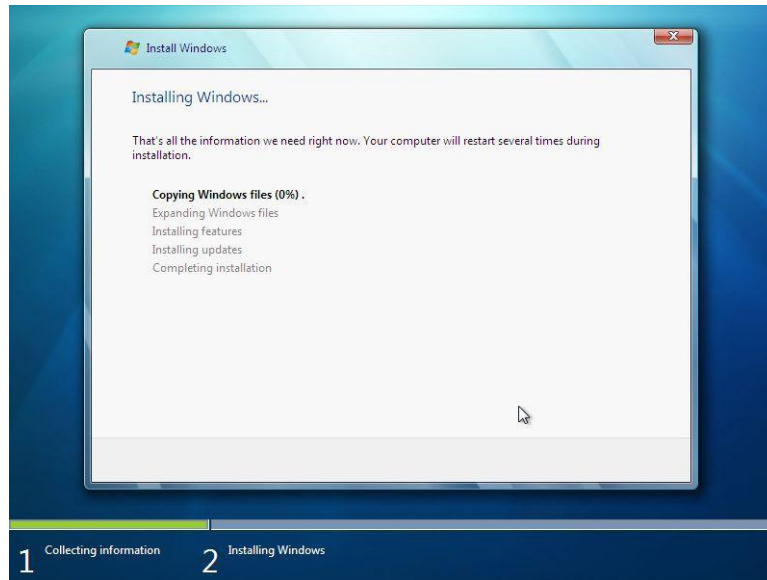
7. From the **System Recovery Options** dialog box, select a language and keyboard layout.



8. Click the **Yes** button to reinstall Windows using the image you placed in the recovery partition

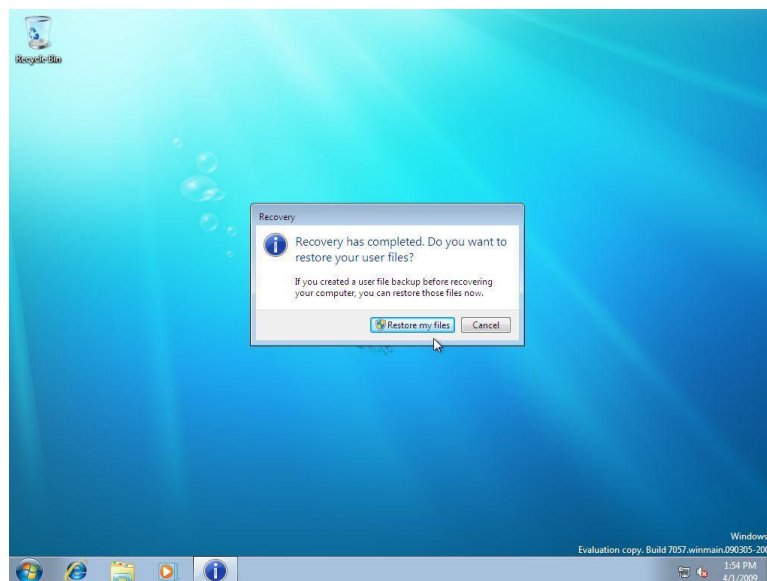


Note: By selecting Yes, Windows will begin the reinstallation of Windows using the recovery image you created.



9. Once the Windows Setup is complete, the PC will reboot. Complete **Windows Welcome**.

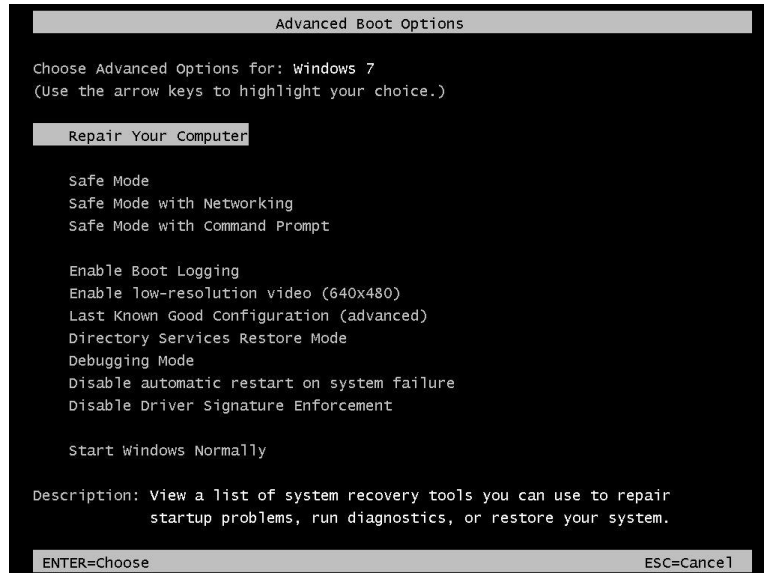
Note: If you create a backup prior to the restore, you'll have the option to restore the backup.



4.3 Recovery Using the Advanced Boot Options

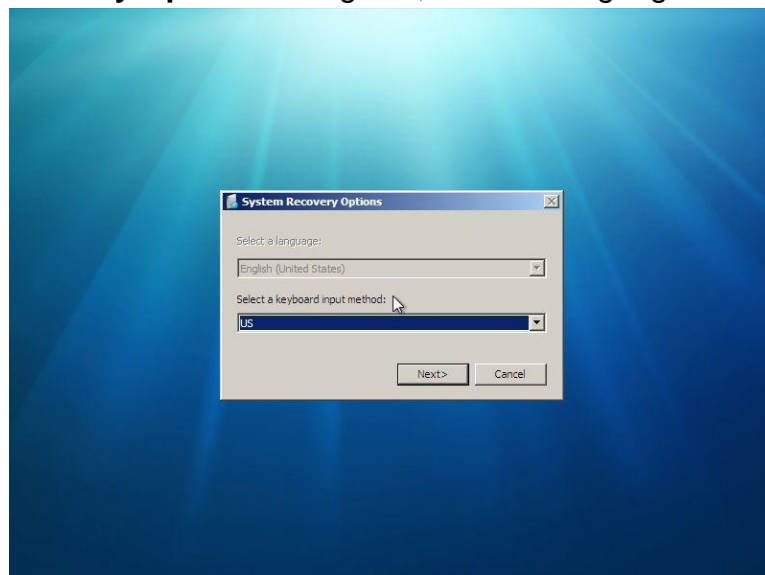
To access the **Advanced Boot Options** perform the following tasks:

1. Turn on the computer.
2. Press F8 before Windows starts.

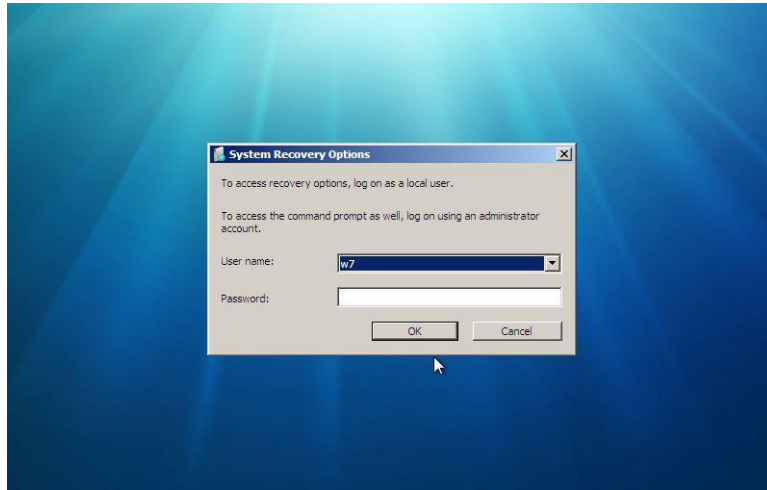


Note: If Windows starts, you did not press F8 within the appropriate time allows. Shutdown the computer and try again.

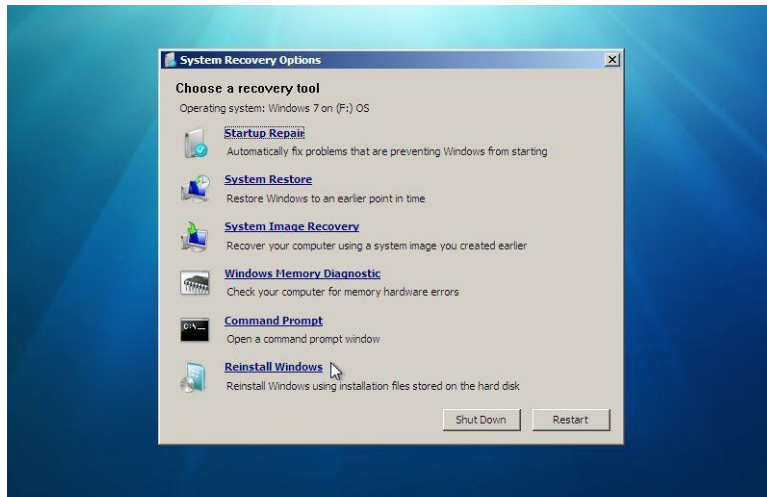
3. From the **System Recovery Options** dialog box, select a language and keyboard layout.



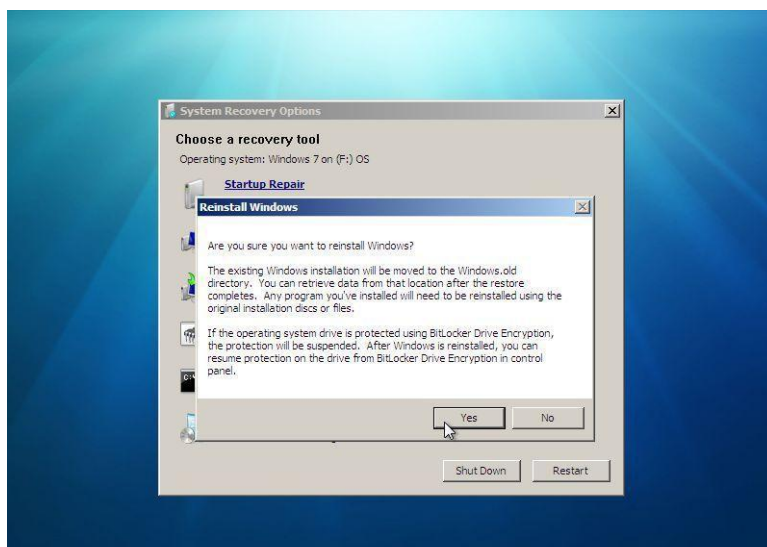
4. Select the user you created.



5. Select Reinstall Windows.



6. Click the Yes button to start the reinstallation of Windows using the image you placed in the recovery partition.



ARCTIC Switzerland,

Untere Altbreitenstrasse 1, 8722 Kaltbrunn, Switzerland

www.arctic.ac

©2012 ARCTIC (HK) Ltd. All Rights Reserved.

No part of this manual including the products described in it, may be reproduced, transmitted, stored in a retrieval system, or translated into any languages in any form or by any means, except documentation kept by the purchaser for backup purposes, without the express written permission of ARCTIC (HK) Ltd. In no event shall ARCTIC (HK) Ltd. and its directors or employees be liable for any indirect, incidental or consequential damages arising from any defect or error in this manual or product.



FCC Statement:

This device complies with part 15 of the FCC Rules. Operation is subject to the following two conditions: (1) This device may not cause harmful interference, and (2) this device must accept any interference received, including interference that may cause undesired operation.

This equipment has been tested and found to comply with the limits for a Class B digital device, pursuant to part 15 of the FCC Rules. These limits are designed to provide reasonable protection against harmful interference in a residential installation. This equipment generates, uses and can radiate radio frequency energy and, if not installed and used in accordance with the instructions, may cause harmful interference to radio communications. However, there is no guarantee that interference will not occur in a particular installation. If this equipment does cause harmful interference to radio or television reception, which can be determined by turning the equipment off and on, the user is encouraged to try to correct the interference by one or more of the following measures:

- Reorient or relocate the receiving antenna.
- Increase the separation between the equipment and receiver.
- Connect the equipment into an outlet on a circuit different from that to which the receiver is connected.
- Consult the dealer or an experienced radio/TV technician for help.

Caution: Any changes or modifications not expressly approved by the party responsible for compliance could void the user's authority to operate the equipment.

FCC RF Radiation Exposure Statement

This equipment should be installed and operated with a minimum distance of 20 centimeters between the radiator and your body.