

Wireless Laser Mouse Optical Mouse

1. Un-install or removing the current mouse driver

Before installing the driver of the mouse, we suggest that you check if any other mouse driver installed in your system. If yes, in order not to make conflict, please un-install or remove that driver before installing the mouse.

2. Install the mouse driver (optional)

Select setup.exe to install the driver.

Trouble Shooting

- a. Make sure you have connected the receiver correctly to the computer's USB port.
- b. For the best performance, we suggest you to locate the receiver with a distance from other electrical devices, such as the computer, the computer monitor or external storage drives.
- c. Make sure you have set the communication between the receiver and the mouse. Refer to the channel setting instruction (refer to No.3) in your manual.
- d. Some system devices might conflict with the mouse. Confirm the IRQ/address settings of these devices for conflicts, and change the settings as required.
- e. Make sure that you are not working the mouse on glossy or reflective surfaces.
- f. Try unplugging then reconnecting the receiver cable to your computer.

Battery use reminders

1. Please make sure the batteries used for recharging are "Rechargeable Batteries"
2. Remove worn-out batteries from equipment immediately and dispose of promptly.
3. Keep all batteries (used or new) out of the reach of children.
4. To have the batteries with a regular check and replace new batteries if not used for a long time.
5. Never dispose of batteries in fire, as they could explode.
6. Always replace all the batteries at the same time. Mixing old and new batteries or mining types (such as alkaline with zinc carbon) will reduce overall performance and could cause leakage or rupture.
7. If the lower power indicator is blinking, please charge the battery through the USB charging cable immediately. Otherwise, you may need to reset the batteries and ID, and then recharge the batteries more than 4 hours.
8. Do not mix different types of batteries (e.g. Ni MH, NiCd, alkaline, and etc) in the mouse.
9. Remove batteries from the electrical device if the device is not going to be used for a long time.
10. If the performance of the batteries decreases substantially, it is time to replace the batteries.

This device complies with Part 15 of the FCC Rules. Operation is subject to the following two conditions: (1) this device may not cause harmful interference, and (2) this device must accept any interference received, including interference that may cause undesired operation.

FCC NOTE:

The manufacturer is not responsible for any radio or TV interference caused by unauthorized modifications to this equipment. Such modifications could void the user's authority to operate the equipment.



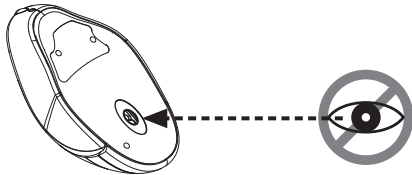
User's Guide

Introduction

Congratulations on your purchase of the most innovative wireless mouse. With an incredible sensitivity to surface details and high tracking speed than other mice, the mouse can track reliably even on tricky polished or wood-grain surfaces. It offers even more advance that will make you more productive and more comfortable.

! Safety Notice

- This product complies with IEC 60825-1, Class I laser product. **(for Laser mouse models only.)**
- Your product complies with FCC and CE rules.

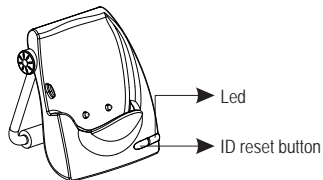


Please **DO NOT** direct the laser beam at anyone's eye.
(※ Only for laser model)

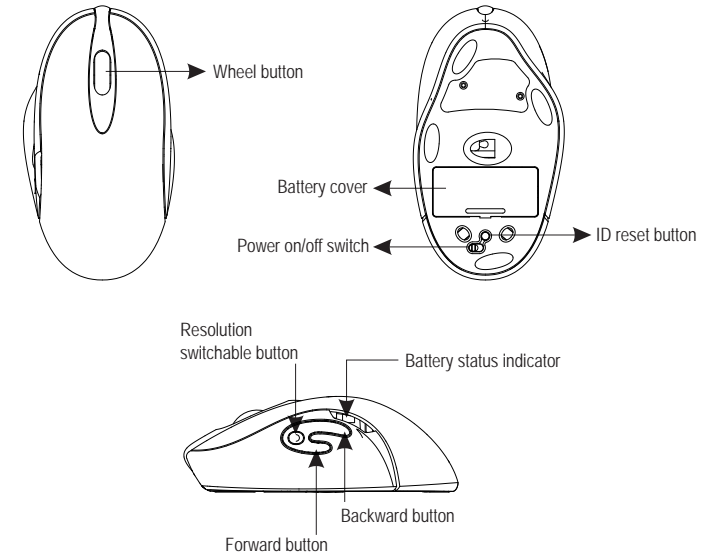
Features

- 27 MHz RF (distance 1.0m)
- Using state-of-art technology. High tracking speed and sensitivity.
- 4D tilt wheel scroll. (optional)
- One Channel/256 ID
- Recharging by charging cradle
- Plug and Play! No need to set the channel ID.
- Power on/off switch
- Data report rate : 125 Report/Sec.
- 2*AAA NiMH batteries
- 800 dpi or higher

Charging Cradle / Receiver



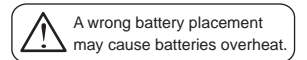
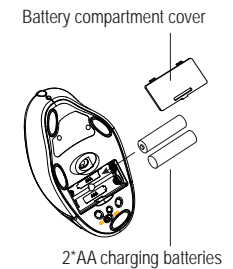
Mouse



A. Hardware Installation

1. Insert the batteries

- Remove the battery compartment cover on the bottom case of the mouse.
- Fit in the batteries accordingly to the diagram indicated in the battery cabinet.
- Close the battery compartments cover properly.

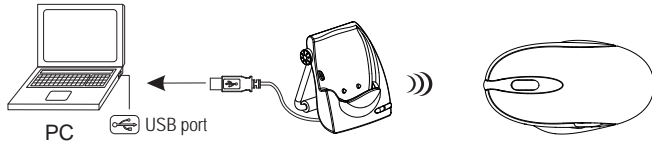


! Note

- It is a **MUST** to fully charge the rechargeable batteries contained in this package at the first-time use.
The unit offers a strong power saving management. Once the mouse accesses the sleeping mode, " to click any button of the mouse" is compulsory to wake it up.
- Power on/off:
➤ There is a Power on/off switch designed to save the batteries power while non-usage of a longer period.

2. Connect the receiver

- Turn off your PC.
- Connect the receiver cable to USB port on PC
- Turn on your PC



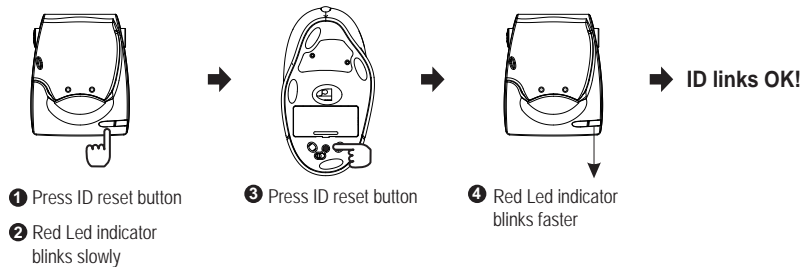
3. Establish communication between the mouse and receiver

A. Auto-link mode:

The mouse has auto-link function itself.

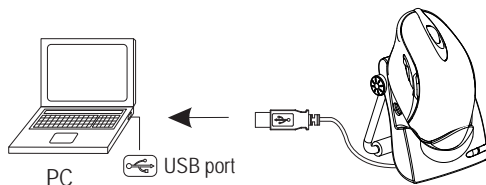
B. Manual mode:

- Please reset the ID when first time use if necessary.(step 1)
- Press the ID reset button on the receiver cradle, and note the red LED will blink slowly. (step 2)
- Press the ID reset button on the bottom of the mouse to set a new ID. (step 3) The red LED indicator will blink at a faster rate when an identical ID is located.(step 4)
- Press any button of the mouse to confirm the ID matching. The red LED indicator on the receiver will blink any time the mouse sends it a signal.



4. Recharge the batteries

When the mouse Low Power indicator signals, please recharge the batteries by putting the mouse in the cradle and connect the USB cable to the USB port of your PC. (Make sure that you are using rechargeable batteries inside). It takes about 5-6 hours to completely recharge the batteries.



★ LED Display Status

- [Mouse] Green LED Light ON - Charge completed
- [Mouse] Red LED flashing - Low Battery
- [Cradle] Orange LED Light ON - Charging
- [Cradle] Green LED Light ON - Charge completed

! Note

- The red LED on the top case of the mouse is a low batteries power indicator. It indicates that batteries inside the mouse need to be recharged.
- If the batteries are used up, you may need to take out the batteries, reinstall again, and reset the ID to recharge it.
- The mouse surface may be warm during charging process. It is a normal phenomenon.

After Recharging

- Removing the mouse from the charging cradle when charging is completed.
- Make sure the communication between the mouse and the receiver is still available after completing recharging batteries. If not, please refer to the channel setting instruction (refer to No. 3) in the manual to reset the communication.

5. Operation

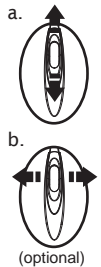
4D Scrolling (optional):

a. Vertical Scrolling

Roll wheel up to scroll up; roll wheel down to scroll down.

b. Horizontal (tilt) scrolling (optional)

Push wheel left and hold the scroll left; press wheel right and hold to scroll right. Release wheel to stop scrolling function.



! Note

- The tilt scrolling function is only effective under successful installation of the original mouse driver. The driver is an optional item included in the package or it can be downloaded from the website of the local brand vendor.

B. Driver Installation

The mouse features plug & play. It is not necessary to install the driver to operate the mouse. The driver is an optional item included. However if the model purchased is with 4D tilt function, you may require the mouse software driver to make the tilt scrolling function effective.