

Federal Communication Commission Interference Statement

This equipment has been tested and found to comply with the limits for a Class B digital device, pursuant to Part 15 of the FCC Rules. These limits are designed to provide reasonable protection against harmful interference in a residential installation.

This equipment generates, uses and can radiate radio frequency energy and, if not installed and used in accordance with the instructions, may cause harmful interference to radio communications. However, there is no guarantee that interference will not occur in a particular installation. If this equipment does cause harmful interference to radio or television reception, which can be determined by turning the equipment off and on, the user is encouraged to try to correct the interference by one of the following measures:

- Reorient or relocate the receiving antenna.
- Increase the separation between the equipment and receiver.
- Connect the equipment into an outlet on a circuit different from that to which the receiver is connected.
- Consult the dealer or an experienced radio/TV technician for help.

FCC Caution :

To assure continued compliance, any changes or modifications not expressly approved by the party responsible for compliance could void the user's authority to operate this equipment. (Example - use only shielded interface cables when connecting to computer or peripheral devices).

FCC Radiation Exposure Statement

This equipment complies with FCC RF radiation exposure limits set forth for an uncontrolled environment. This equipment should be installed and operated with a minimum distance of 20 centimeters between the radiator and your body.

This device complies with Part 15 of the FCC Rules. Operation is subject to the following two conditions:

- (1) This device may not cause harmful interference, and
- (2) This device must accept any interference received, including interference that may cause undesired operation.

2.4GHz Wireless Multimedia Presenter



User's Guide

4-in-1

- Remote Trackball
- Wireless Presenter
- Laser Pointer
- Multimedia Controller

All other brands and trademarks are the properties of their respective owners.
The product specifications are subject to change without notice.

INTRODUCTION

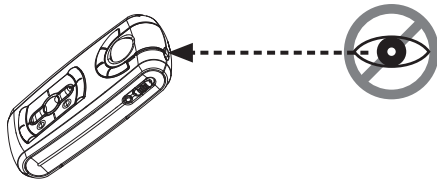
Thank you for the purchase of the most innovative 2.4GHz multimedia presenter.

! Safety Notice

- This product complies with IEC 60825-1, Class I laser product.
- Your product complies with FCC and CE rules.



Please **DO NOT** direct the laser beam at anyone's eyes.

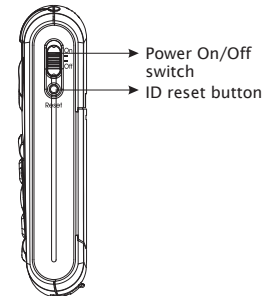
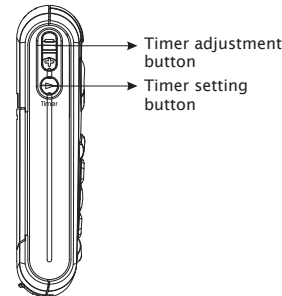
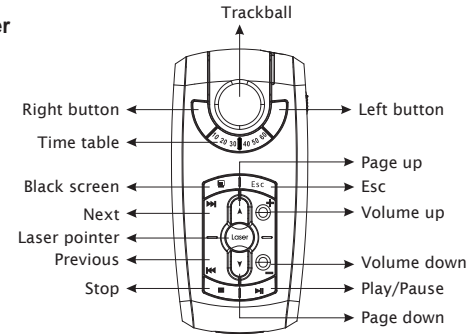


Features

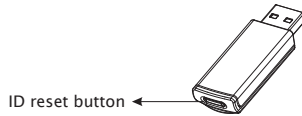
- Consolidating 2.4GHz wireless, trackball, and presenter technology.
- 4-in-1 design: a wireless remote media controller, a wireless trackball in the air, a laser pointer, and a remote presenter while users have presentation toward audience.
- 16 channels with 4096 ID. No interference!
- Wide range and long transmission distance of Max. 10M.
- Remote trackball for cursor control.
- Timer setting for presentation duration
- Timer alarm by vibration for presentation time control
- Page up / down between presentation slides.

- Laser pointer
- Presentation buttons: Slide forward / back, Black screen, Esc.
- Multi-media button controls: Play / Pause, Previous /Next track,
- Volume control
- Power on / off switch for save the battery.
- Plug and Play. No need to install driver.
- Storable wireless receiver.
- Smart-Link channel ID.

Presenter

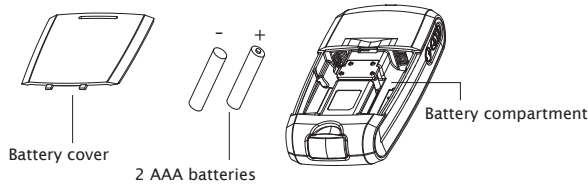


Receiver



1. Insert the batteries

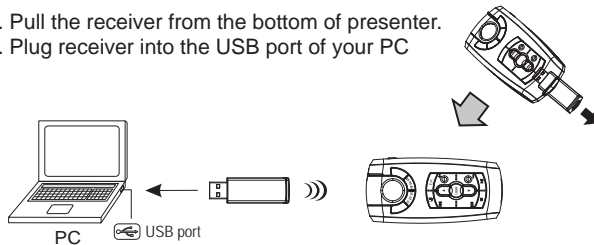
- Open the battery cover on the back of the presenter
- Fit in the batteries according to the diagram indicated in the battery compartment.
- Close the battery cover.



An incorrect battery placement may cause batteries over heat.

2. Connect the presenter and the receiver

- Pull the receiver from the bottom of presenter.
- Plug receiver into the USB port of your PC



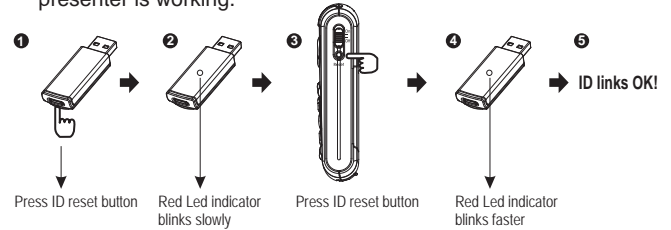
3. Establish communication between the presenter and the receiver

A. Auto-link mode:

The presenter has auto-link function itself.

B. Manual mode:

- Press the ID reset button on the front of the receiver(step 1), and make sure the red LED will blink slowly.(step 2)
- Press the ID reset button in the right side of the presenter .(step 3)
- The Receiver's red LED indicator will blink at a faster rate until an identical ID is set up.(step 4)
- The ID indicator of the receiver will blink any time when the presenter is working.



4. Operation

● Remote trackball :

The trackball can be used as a pointing device to move the cursor

● Right / Left button:

Using left and right buttons as a mouse's right and left buttons.

● Timer setting for presenter:

This is to allow you to set the presentation duration from 10 minutes, 20 minutes, up to 60 minutes. You can adjust it according to your demand. Once the time is set, the presenter will alarm you by vibration 5 minutes before ending of your presentation, and alarm again while ending.

Re-set timer: Re-press Timer Setting button again to re-set

Presentation Buttons

- **ESC :**
Press ESC to escape from the slides of Power Point
- **Black Screen :**
Press the Black Screen button, the screen will be black during the presentation. Press any key to return.
- **Page up / down :**
Press Page Up / Down button to return or go to the next slide of Power Point.
- **Laser pointer :**
Use laser pointer to point what a user wants to point at the monitor.



Please **DO NOT** direct the laser beam at anyone's eye.

Multimedia Buttons

- **Play / Pause :**
Play the music or pause the music in
- **Volume Up / Down :**
Press Volume Up / Down button to turn up or down the music volume
- **Track Last / Next :**
Press the buttons to go to the last track or forward.
- **Stop :**
Stop the music.

※ Multimedia functions can't be used under Windows98 or any software which is not compatible with Windows Media Player.

5. Power On / Off

There is a power on / off switch on the right side of the presenter to save the battery power. It is for saving battery life while the user doesn't need to use it in a period of time.

❖ Trouble Shooting

- a. Make sure you have connected the receiver correctly to the computer's USB port.
- b. For the best performance, we suggest you to locate the receiver with a distance from other electrical devices, such as the computer, the computer monitor or external storage drives.
- c. Make sure you have set the communication between the receiver and the mouse. Refer to the channel setting instruction (refer to No.3) in your manual.
- d. Some system devices might conflict with the mouse. Confirm the IRQ/address settings of these devices for conflicts, and change the settings as required.
- e. Try unplugging then reconnecting the receiver cable to your computer.

❖ Battery use reminders

- (1) Keep all batteries (used or new) out of the reach of children.
- (2) To have the batteries with a regular check and replace new batteries if not used for a long time.
- (3) Remove batteries from the electrical device if the device is not going to be used for a long time.
- (4) If the performance of the batteries decreases substantially, it is the right time to replace the batteries.
- (5) Do not mix different types of batteries (e.g. Ni-MH, Ni-Cd, Alkaline iK etc.) in the mouse.

FCC NOTE:

THE MANUFACTURER IS NOT RESPONSIBLE FOR ANY RADIO OR TV INTERFERENCE CAUSED BY UNAUTHORIZED MODIFICATIONS TO THIS EQUIPMENT. SUCH MODIFICATIONS COULD VOID THE USER'S AUTHORITY TO OPERATE THE EQUIPMENT.