

2.4GHz Wireless Mouse

B066LR



Manufacturer information
Company Name: ARESON Technology Corp.
Company address: 11F, No.646, Sec.5, Chongxin Rd., SanChong Dist., New Taipei City
241, Taiwan(R.O.C.)

User's Guide

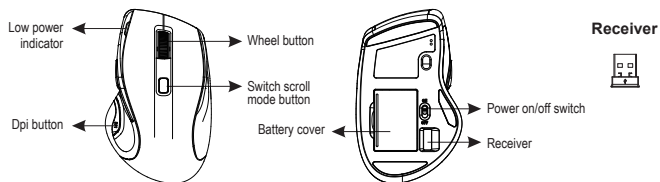
Introduction

Congratulations on your purchase of the most innovative wireless mouse. With an incredible sensitivity to surface details and high tracking speed than other mice, the mouse can track reliably even on tricky polished or wood-grain surfaces. It offers even more advance that will make you more productive and more comfortable

Features

- 2.4GHz (distance 6~8m), 16 Channels/2²⁴ ID
- Using state-of-art technology. High tracking speed and sensitivity.
- Hyper-Fast Scrolling
- Longer battery life.
- Auto-Link, Plug and Play! No need to set the channel ID.
- Power on/off switch.
- 800/1600 dpi switchable button.
- Ergonomic design.
- 2*AA Alkaline batteries included.
- Mouse: RATED VOLTAGE: 3V== RATED CURRENT: 100mA

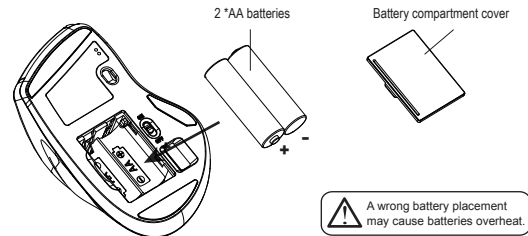
Mouse



A. Hardware Installation

1. Insert the batteries

- a. Remove the battery compartment cover on the bottom case of the mouse.
- b. Fit in the batteries accordingly to the diagram indicated in the battery cabinet.
- c. Close the battery compartment cover properly.
- d. Make sure the Power on-off switch on the bottom of the mouse is ON.
- e. The Low Power LED will be on for 6 seconds if the mouse power is on.

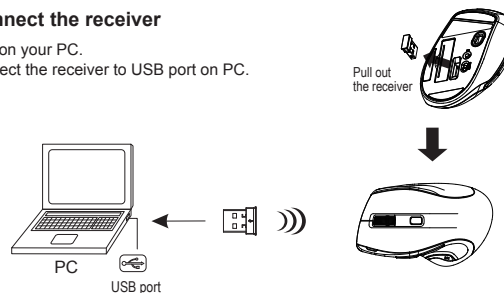


Note

- The unit offers a strong power saving management. Once the mouse accesses the sleeping mode, "to click any button of the mouse" is compulsory to wake it up.
- **Power on/off:**
There is a Power on/off switch designed to save the batteries power while non-usage of a longer period.
- User can press DPI button to change the resolution. The LED on wheel bar will be flashed when dpi has been successfully switched.

2. Connect the receiver

- a. Turn on your PC.
- b. Connect the receiver to USB port on PC.



3. Communication : The mouse & the receiver

The 2.4Ghz RF mouse features a dual-way transmission technology which enables the mouse and the receiver auto-communication.

Auto-link mode

1. Make sure the Power On-Off Switch on the bottom of the mouse is ON.
2. Operate the mouse, and cursor's movement is mapping mouse movement. Now the mouse and the receiver is auto-linked successfully.

4. Replace a new battery

Please replace a new battery and follow the previous instructions. (2, 3)

Note

The red LED on the scroll wheel is the low battery power indicator. It indicates that battery inside the mouse is needed to be replaced.

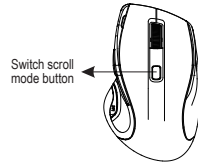
5. Switch scroll mode

Standard scroll mode:

When switched to the normal speed mode, the wheel can scroll at normal speed and with a feeling of graduations.

Hyper speed scroll mode:

When switched to the hyper speed mode, the wheel can scroll at hyper speed, enabling users to browse very fast.



Troubleshooting

- Make sure you have connected the receiver correctly to the computer's USB port.
- For the best performance, we suggest you to locate the receiver with a distance from other electrical devices.
- Make sure you have set the communication between the receiver and the mouse. Refer to the Communication: The mouse and the receiver.
- Make sure that you are not working the mouse on glossy or reflective surfaces.

Battery use reminders

- Remove worn-out batteries from equipment immediately and dispose of promptly.
- Keep all battery (used or new) out of the reach of children.
- To have the battery with a regular check and replace a new battery if not used for a long time.
- Never dispose of battery in fire, as it could explode.
- Do not use the wrong type of battery (e.g. Ni MH, NiCd, and etc) in the mouse.
- Remove battery from the electrical device if the device is not going to be used for a long time.
- If the performance of the battery decreases substantially, it is time to replace the battery.

FCC statementattery

This equipment has been tested and found to comply with the limits for a class B digital device, pursuant to Part 15 of the FCC Rules. These limits are designed to provide reasonable protection against harmful interference in a residential installation.

This equipment generates uses and can radiate radio frequency energy and, if not installed and used in accordance with the instructions, may cause harmful interference to radio communications. However, there is no guarantee that interference will not occur in a particular installation if

this equipment does cause harmful interference to radio or television reception, which can be determined by turning the equipment off and on, the user is encouraged to try to correct the interference by one of the following measures:

- Reorient or relocate the receiving antenna.
- Increase the separation between the equipment and receiver.
- Connect the equipment into an outlet on a circuit different from that to which the receiver is connected.

To assure continued compliance, any changes or modifications not expressly approved by the party responsible for compliance could void the user's authority to operate this equipment. (Example-use only shielded interface cables when connecting to computer or peripheral devices).

This device complies with Part 15 of the FCC Rules. Operation is subject to the following two conditions:

- This device may not cause harmful interference. and
- This device must accept any interference received, including interference that may cause undesired operation.



This symbol on the product or in the instructions means that your electrical and electronic equipment should be disposed at the end its life separately from your household waste. There are sparate collection system for recycling in the EU.



For more information, please contact the local authority or your retailer where you purchased the product.



The symbol in the battery compartment means the required battery size and the placement directions.

CAUTION:

RISK OF EXPLOSION IF BATTERY IS REPLACED BY INCORRECT TYPE. DISPOSE OF USED BATTERIES ACCORDING TO THE INSTRUCTIONS.

This product uses non-rechargeable Alkaline batteries.