

L901LR 2.4G WIRELESS/WIRED LASER GAMING MOUSE

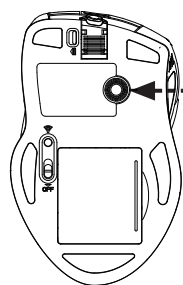


User's Guide

Introduction

The most revolutionary 2.4G Wired/Wireless gaming mouse with the highest advanced laser engine--Philips PLN2032, reveals a professional gaming spirit and creates the perfect handy match for pioneer gaming users. Macro setting technology with innovative gaming software is another smart and efficient feature for expert gamers. This gaming software tool provides a unique platform for gamers to record, read, and edit scripts which can be saved and assigned to any specific gaming buttons of the mouse. This powerful feature will help gamers getting rid of repeated practice, reducing burdens, and having more fun.

This unprecedented performance gaming mouse is the ultimate solution for the gamer who are enjoying the pleasure and becoming the winner of game competition at the same time.



! Safety Notice

- This product complies with IEC 60825-1, Class I laser product.
- This product complies with FCC and CE rules.

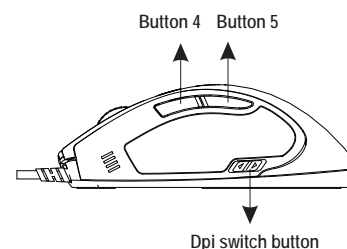
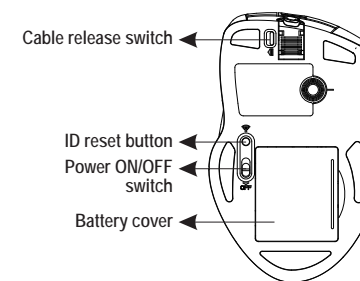
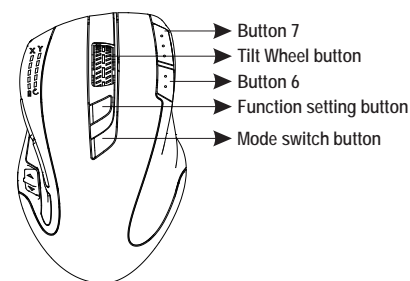


Please **DO NOT** direct the laser beam at anyone's eye.

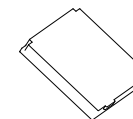
Features:

- 2.4GHz (distance 6~8m), 8 Channels/ 2²⁴ ID
- 2.4G Hz Wired/Wireless Gaming Mouse
- Auto-Link, Plug and Play! No need to set the channel ID.
- Unique 11 programmable buttons plus 5 gaming modes to customize gamers' desired scripts.
- 9+2 buttons USB Gaming Mouse.
- Charging through USB port from charging cable.
- Programmable buttons as gaming buttons or Internet buttons.
- Using state-of-art laser technology.
- 16 bit ultra-data path for ultimate performance.
- Polling rate 1000 Hz.
- Full speed USB.
- 400/800/1600/3200 dpi switchable.(Max. to 5600 dpi)
- 4-way scrolling.
- Tracking Speed: 150 inch/sec.
- Omron Micro Switch Max. Life 5 Million times.

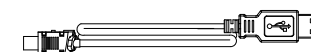
- Rubber side grips and finger grooves.
- Stylish, ergonomic and comfortable shape.
- Setting DPI and adjusting wheel scrolling by mouse without any driver or software
- Power on/off switch.
- Ergonomic design.



Rechargeable battery



Charging cable



Receiver

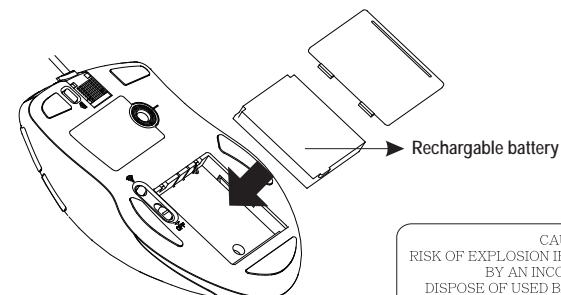


LED

A. Hardware Installation

1. Insert the batteries

- a. Remove the battery compartment cover on the bottom case of the mouse.
- b. Fit in the batteries according to the diagram indicated in the battery cabinet.
- c. Close the battery compartment cover properly.
- d. Make sure the Power on-off switch on the bottom of the mouse is ON.
- e. The Battery Power Indicate LED will blink 6 seconds if the mouse power is on.



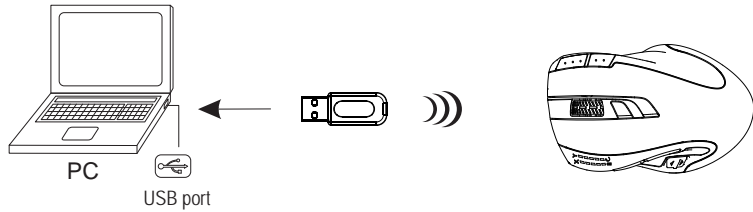
CAUTION
RISK OF EXPLOSION IF BATTERY IS REPLACED
BY AN INCORRECT TYPE.
DISPOSE OF USED BATTERIES ACCORDING
TO THE INSTRUCTIONS

Note

Power on/off: There is a Power on/off switch designed to save the batteries power while non-usage of a longer period.

2. Connect the receiver

- Turn on your PC.
- Connect the receiver to USB port on PC.



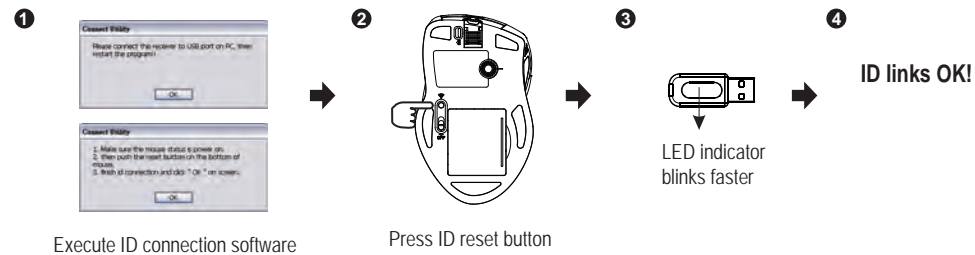
3. Communication : The mouse & the receiver

A. Auto-link mode

- Make sure the Power On-Off Switch on the bottom of the mouse is ON.
- Operate the mouse, and cursor's movement is mapping mouse movement. Now the mouse and the receiver is auto-linked successfully.

B. Manual mode

If you find the communication channel does not connect well, you can use the software connection tool to re-connect the mouse & receiver **to reset a new channel ID**. You are able to get the software from the included diskette of the package or download from your local brand vendor's website.



Note

- While the mouse is working, if encountering any interference, the mouse and the receiver will automatically source out and transfer to another free channel. During the transferring, the cursor movement may have a second delay.

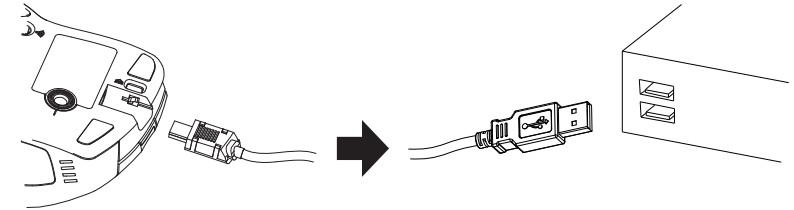
4. Recharge the battery

When the mouse Power Indications signals, Please go forward to the charging process by following solutions.

Recharge directly form the mouse

(1) Through PC's USB Port

Plug the USB charging cable to an available PC's USB Port and the socket at the front end of the mouse. Make sure your PC's power is on and then, the recharging process begins.

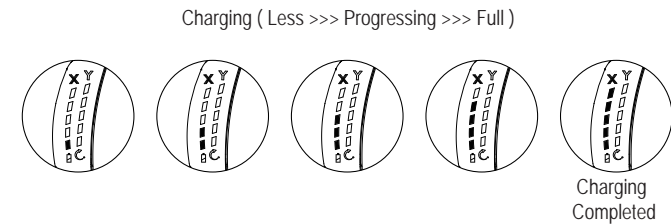


Note

- 1. The mouse surface may become warm during charging process. It is a normal phenomenon.
- 2. Please do not recharge through a USB hub, which may cause an ineffective execution

(2) Re-Charge Indicate

- Above is charging progressing diagram, the LED will keep changing from 1 LED to 4 LED. The full charging will be indicated by 5 LED light on. To charge battery and for data transmission as long as plus USB charging cable into mouse, meanwhile, the wireless mouse becomes a wired mouse automatically.
- Unplug USB charging cable from mouse, the wired mouse will return to be a wireless mouse.



Note

Please recharge the batteries when the Low Power LED Flash. If you use up the batteries, you may need to re-install the batteries again.

(3) After recharging

- Remove the mouse from the charging cables.
- Make sure whether the communication between the mouse and the receiver is still available or not. If not, please refer to the ID setting instruction in the manual to re-set the communication.

B. Software Installation

The CD included in the package contains gaming software. (The Tilt Wheel function will be activated only after the gaming software is installed.)

• Driver Installation

The mouse features plug & play. It is not necessary to install the driver to operate the mouse. You may require the mouse driver to make the tilt scrolling function effective. Please kindly install gaming software to complete tilt wheel driver installation.

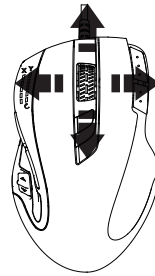
A. Un-install or removing the current mouse driver

Before installing the driver of the mouse, we suggest that you check if any other mouse driver has been installed in your system. If yes, please uninstall or remove the existing mouse driver or software before installing this gaming software to avoid conflict.

B. Install the mouse driver

Select setup.exe to install the driver from the CD.

C. Operation: 4-Way Scrolling



1. Vertical Scrolling

Roll wheel up to scroll up; roll wheel down to scroll down.

2. Horizontal Scrolling

Hold the wheel to left to scroll left; hold the wheel to right to scroll right. Release wheel to stop scrolling function.

! Note

- > The 4-Way scrolling function is effective only after successful installation of the original mouse driver.
- > To function the 4-way scrolling in some applications in Windows VISTA such as Word, Excel, Powerpoint and etc., the driver should be installed.

• Gaming Software Tool Installation

To use the powerful gaming function, users need to install and execute the gaming software tool. Just insert the CD, then run the GM.exe

! Note

- > While executing the gaming software, please close the related **Language Input Method**.
- > Not to cause conflict, we suggest you had better uninstall other mouse drivers before installing the gaming software.
- > The gaming software will auto-detect if the gaming mouse is plugged into the PC. After connecting to the PC, the mouse photo will display on the upper right corner of the software.
- > After successful installation, there is a gaming mouse software icon will appear on the lower right corner of the windows screen.

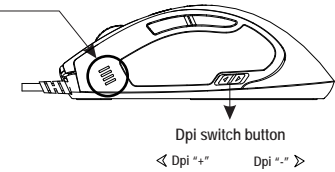
Dpi Settings

- Press the dpi switch button to change the different resolution.
- The default dpi setting:

Dpi light indicator

- * 400 dpi : One Blue LED "On"
- * 800 dpi : Two Blue LED "On"
- * 1600 dpi : Three Blue LED "On"
- * 3200 dpi : Four Blue LED "On"

- User can change default dpi settings to the range of 100~5600 dpi with the gaming software tool included.



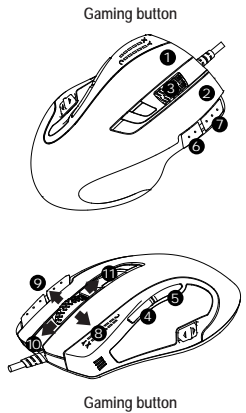
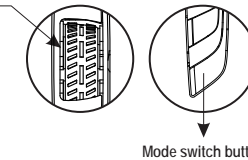
Gaming Modes Setting

- * Users can record a macro or get a built-in function from script library, and then save and assign a macro or a function to one of available modes for each gaming button.
- * The 4th/5th buttons default is Internet Forward & Backward.

- There are 11 programming gaming buttons for users to assign a macro function.
- There are 5 modes switchable.
- The mode switch button is on the top of the mouse.

Mode light indicator

- * Red light on - Mode 1
- * Green light on - Mode 2
- * Blue light on - Mode 3
- * Pink light on - Mode 4
- * Cyan light on - Mode 5



Tips for In-play Sensitivity Switching

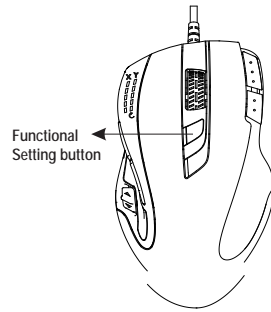
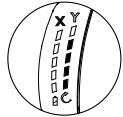
- Try the default settings in practice games first before changing these settings.
- Practice using the In-game dpi Increase/Decrease buttons on the mouse before engaging in serious combat.
- In first-person shooter games, programming the mouse to use only two tracking sensitivities may work better than using three or more. Use a smaller dpi tracking sensitivity (e.g., 100 dpi) for sniping and shooting, and a higher setting (e.g., 5600 dpi) for quicker movements.
- Customize each game according to your specific sensitivity switching needs.

Dpi Setting

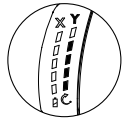
A. Status inspection :

To click F.S. (function setting) button is the way to switch setting mode.

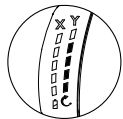
1. X axis - DPI status : click F.S. once, the X axis LED will light on and indicate the X axis resolution is.



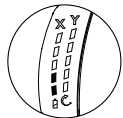
2. Y axis - DPI status : click F.S. twice, the Y axis LED will light on and indicate the Y axis resolution is.



3. Wheel count calculation status : click F.S. 3rd time, the wheel scrolling image graph will light on and indicate how many count of wheel scrolling is.



4. Residual battery power : click F.S. 4rd time, at the same time the battery icon will light on.



B. How to Set up :

press and hold F.S. button for 3-sec. to enter set up mode. The setting sequence is : X axis dpi setting >> Y axis dpi setting >> wheel count setting

1. X axis setting :

press and hold F.S for 3-sec. to enter X axis dpi setting mode, the X axis image graph will flash. The LED will indicate the correct resolution, and can be adjusted by wheel scrolling up or down to increase or decrease dpi. Each of squares on behalf of 100 dpi. Scrolling up one count means to increase 100 dpi; contrarily, scroll down one count to decrease 100 dpi. Below shows how to reconize dpi level. The dpi range is from 100 dpi to 5600 dpi maximum, with 57 levels. After setting, press F.S. for 3-sec. to save into memory and drop out of the setting mode.

2. Y axis setting :

press and hold F.S for 3-sec. is X axis dpi setting mode and then click F.S. to enter Y axis setting mode, the Y axis image graph will flash. The LED will indicate how resolution is resolution , and can be adjusted by wheel scrolling up or down to increase or decrease dpi. Each of squares on behalf of 100 dpi. Scrolling up one count means to increase 100 dpi; contrarily, scroll down one count to decrease 100 dpi. Below shows how to reconize dpi level. The dpi range is from 100 dpi to 5,600 dpi maximum with 57 levels. After setting, press and hold F.S. for 3-sec. to save into memory and drop out of the setting mode.

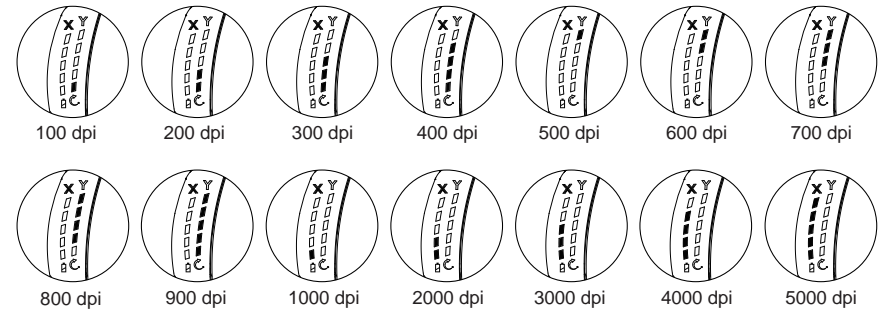
Remark :

100 dpi ~ 400 dpi : LED down >>> up (1st to 4th LED light on)

500 dpi : the 5th LED light on only

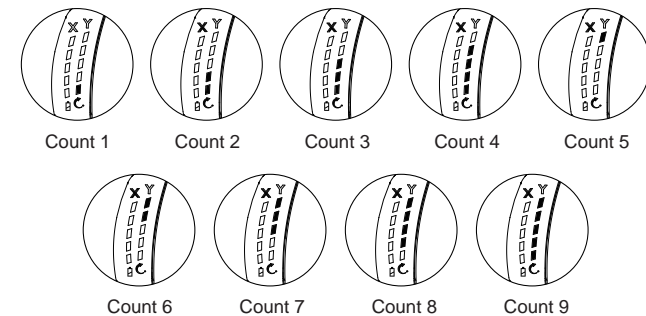
600 dpi ~ 900 dpi : LED up >>> down (5th LED to 1st LED light on)

1000 dpi ~ 5000 dpi : LED down >>> up (1st to 5th LED light on)



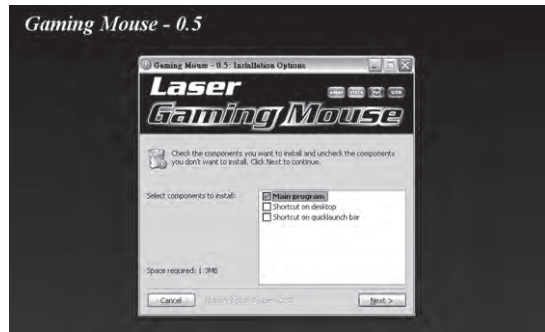
3. Scrolling count setting :

Press F.S. for 3-sec. and click F.S. twice to enter count calculation mode, the arrow image will flash, and show the current count number. Adjust count calculation by scrolling wheel, scroll up to increase the count, and scroll down to decrease the count oppositely. Press F.S. for 3-sec. to save into memory and drop out setting mode.



(1) Software Installation Instruction

CD-ROM will execute Software auto-run after putting CD into, then, system will pop-up the message. Enter into Gaming Mouse installation process. Please select the components to install then go to "Next"



Please assign the destination folder and go to "Install"

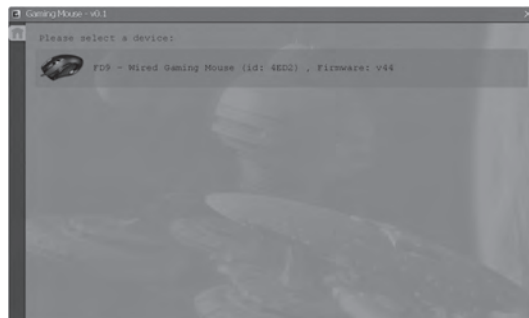


Please "Close" window when the installation has been completed successfully.

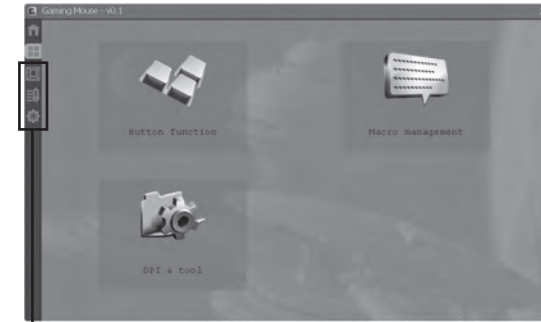


(2) Select Device

a. Please select a device.



b. Please choose the function that you would like to make your personal settings.



You can also click the I-con on the left side to choose.

(3) Macro Settings Instruction



The mouse offer 5 modes for saving macros. There are Red, Green, Blue, Purple and Cyan light to indicate each mode / profile obviously. On the other hand, each mode / profile is able to record 11 scripts.



Profile Selection / Naming

- Move the cursor to the Profile area and click any color from Red, Green, Blue, Purple, Cyan to define the profile name.
- Each profile presents a customized gaming button setting group. Meanwhile, users can define each profile according to different games.
- Please be noted that the Profile name can be typed maximum 8 letters to define which games.

Button Settings

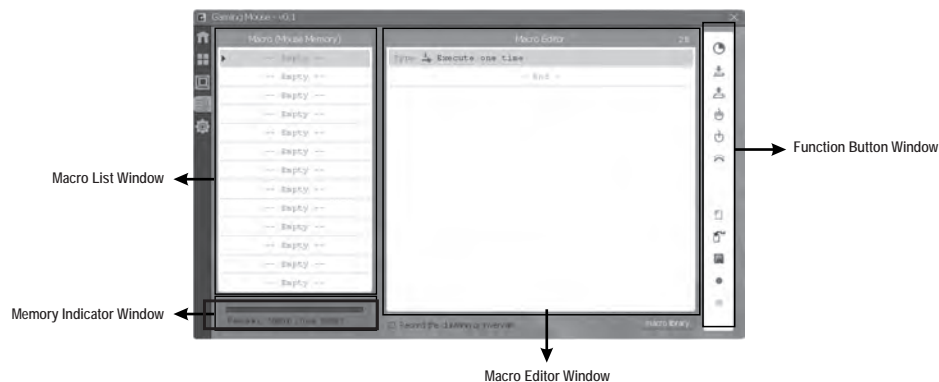
1. Define profile name well.
2. Move the cursor to Button Setting area and set up every button function which either assigned in pop-up manual or customized macro list each by each completely.
3. The product provides 11 gaming buttons to users for functionality setting.



Note

- Please keep in mind that, if any other button function is assigned to the Left button, the default Left button function will be inactive until users set it back to the default function.
- All assigned button functions are automatically saved after the assignment.

(3) Macro Settings Instruction



I. Macro List Window

Macro List has maximum 64 lines to be set up by users. Every line can be named to indicate the meaning of the macro. The Macro List provides 5788 Bytes totally.

Note Please be noted that the space per line can accommodate 14 letters at most.

II. Macro Editor Window

This window is for gamers to record all the keyboard and mouse commands through this powerful recording function.

● Start / ■ Stop Recording:

Click the "start" icon to start recording. Click the "stop" icon to stop recording. Between the 2 clicks, all of your operations on keyboard and mouse are recorded and shown on the Macro Editor Window. To press the "Pause/Break" button on keyboard can also stop recording.

🔄 Reset :

Click "Reset" to get back to the default status, clearing all the recorded contents by gamers.

TIPS Before starting Macro recording, you have to choose one command from "Execute One Time", "Loop mode" or "Firekey mode" in the first line of Macro Editor Window. Click twice on this line to check the next command until your required command appears.

Execute one time **Execute One Time :**

The recorded script will be executed once.

Loop mode **Run Loop :**

After you click once a gaming button, the assigned function will be repeatedly executed until you click again the button.

Firekey mode **Firekey mode :**

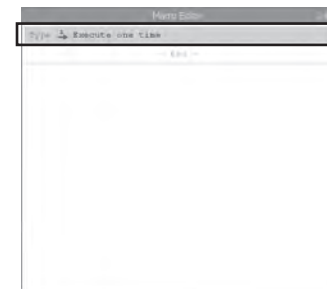
The assigned function will be repeatedly executed while you keep pressing the gaming button, and will stop once you release the button.

Record the duration or intervals **Duration :**

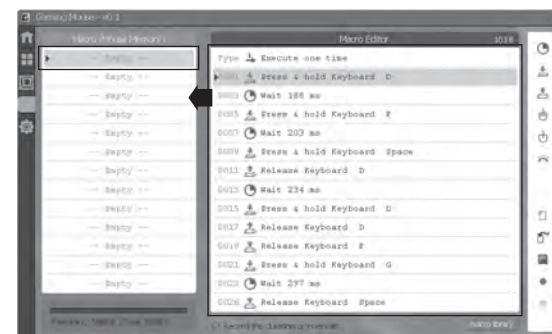
This is to allow you to record the duration of a command or intervals between two commands. The default is active. You can cancel it if it is unnecessary to record the duration.

Duration ms(0.001 second) :

Double click the button, you can manually modify the duration time directly.



After finishing the macro editing, drag the scripts to Macro List Window and name it. The script is automatically saved once it is dragged into the Macro list.



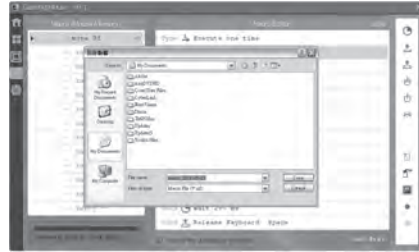
Import Macro / Script :

Other users / friends using this product as well will be awesome! "Import" allow you to have the scripts / macros as the same as what your friends have. Save the scripts / macros provided from your friends in a certain path. Then, click "Import" from software panel and choose the scripts / macros you have had. Congratulations !! You have imported macros successfully.



Export Macro / Script :

Click "Export" and the scripts / macros what you have had which setted through gaming software panel will export to the destination folder you assigned.



III. Function Button Window

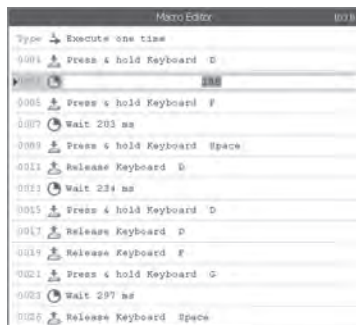
Please kindly use below command icons to amend / insert the script details when you have done the record.

Recycle :

Choose and drag the specific scripts, which you want to delete. To the "Recycle" icon for deleting the scripts forever.

Insert Duration of Intervals :

Drag "Insert Duration of Intervals" icon to Macro Editor area and insert into between two single scripts. Double-click the new duration and key in the specific second.



Insert Key-Down Command :

Drag "Insert Key-Down Command" icon to Macro Editor area and insert into between 2 script. A message of "Please press a keyboard" will pop-up, meanwhile, please press a key on keyboard to insert the key-down into scripts.

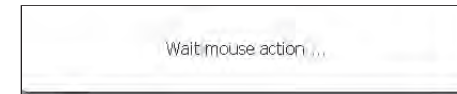


Insert Key-Up Command :

Drag "Insert Key-Up Command" icon to Macro Editor area and insert into between 2 scripts. A message of "Please press a keyboard" will pop-up, meanwhile, please press a key on keyboard to insert the key-up into scripts.

Insert Click Mouse Button Command :

Drag "Insert Click Mouse Button Command" icon to Macro Editor area and insert into between 2 scripts. A message of "Please click a mouse button" will pop-up, at the same time, please click any mouse button to insert the mouse button function into scripts.

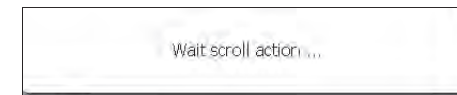


Insert Release Mouse Button Command :

Drag "Insert Release Mouse Button Command" icon to Macro Editor area and insert into between 2 scripts. A message of "Please click a mouse button" will pop-up, at the same time, please click any mouse button to insert the "release mouse button" function into scripts.

Insert Scrolling Command :

Drag "Insert Scrolling Command" icon to the Macro Editor area and insert into between 2 scripts. A message of "Please scroll the wheel" will pop-up, at the same time, please scroll the wheel up or down to insert scrolling up or down function into scripts.



(4) DPI & Tools Instruction

The product provide 4 levels resolution switch, and the default is 400 (One Blue LED On) /800 (Two Blue LED On) /1600 (Three Blue LED On) / 3200 (Four Blue LED On). Users can define the own resolution from 100 dpi ~ 5600 dpi for each of the 4 level. Furthermore, the X axle and Y axle resolution can be set up individually by users.

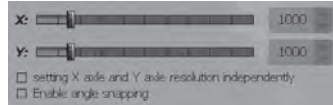


a. Click the level of DPI you are going to adjust. There are 4 levels can be chosen.

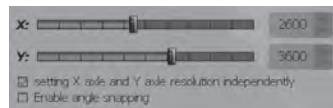


b. In the DPI adjustment area, drag the axis along the DPI scale. Meanwhile, the DPI figure is changing and shown on the right side of the DPI scale.

Note: The computer will save new resolution into mouse automatically.



c. Tick the option of "Setting X axle and Y axle resolution independently" if you would like to adjust the 2 axles individually.



Backup

Backup :

Backup your mouse setting to file.

Restore

Restore :

Restore mouse setting from file.

Reset

Reset :

It will reset all setting of mouse.(macro will be deleted)



This symbol on the product or in the instructions means that your electrical and electronic equipment should be disposed at the end its life separately from your household waste. There are sparate collection system for recycling in the EU.

For more information, please contact the local authority or your retailer where you purchased the product.

FCC statement

This equipment has been tested and found to comply with the limits for a class B digital device, pursuant to Part 15 of the FCC Rules. These limits are designed to provide reasonable protection against harmful interference in a residential installation.

This equipment generates uses and can radiate radio frequency energy and, if not installed and used in accordance with the instructions, may cause harmful interference to radio communications. However, there is no guarantee that interference will not occur in a particular installation if this equipment does cause harmful interference to radio or television reception, which can be determined by turning the equipment off and on, the user is encouraged to try to correct the interference by one of the following measures:

- Reorient or relocate the receiving antenna.
- Increase the separation between the equipment and receiver.
- Connect the equipment into an outlet on a circuit different from that to which the receiver is connected.

To assure continued compliance, any changes or modifications not expressly approved by the party responsible for compliance could void the user's authority to operate this equipment. (Example-use only shielded interface cables when connecting to computer or peripheral devices).

This device complies with Part 15 of the FCC Rules. Operation is subject to the following two conditions:

- (1) This device may not cause harmful interference. and
- (2) This device must accept any interference received, including interference that may cause undesired operation.