

Important Notes:

- Please follow the instructions contained in the manual. Do not try to disassemble or replace parts in the products.
- Do not put the product in water or on any wet surfaces.
- To avoid electrocution, please do not pick up the device when your hands are wet.
- Do not put the product near a heat source.

☉ Troubleshooting

- a. Make sure you have connected the receiver correctly to the computer's USB port.
- b. Check if the batteries have been installed correctly according to the diagram indicated in the battery cabinet
- c. For the best performance, we suggest that you place the receiver away from other electrical devices.
- d. Unplug and re-plug the receiver, or try another USB port. Try connecting directly to your computer instead of using a USB hub.

☉ Battery use reminders

1. Remove worn-out batteries from equipment immediately and dispose of them promptly
2. Keep all batteries (used or new) out of the reach of children.
3. Never dispose of batteries in fire, as they could explode.
4. Always replace all the batteries at the same time. Mixing old and new batteries or mixing types (such as alkaline with zinc carbon) will reduce overall performance and could cause leakage or rupture.
5. Do not mix different types of batteries (e.g. Ni MH, NiCd, alkaline, and etc) in the mouse.
6. Remove batteries from this device if the device is not going to be used for a long time.
7. If the performance of the batteries decreases substantially, it is time to replace the batteries.

FCC statement

This device complies with Part 15 of the FCC Rules. Operation is subject to the following two conditions:

(1) This device may not cause harmful interference, and (2) this device must accept any interference received, including interference that may cause undesired operation.

This equipment has been tested and found to comply with the limits for a Class B digital device, pursuant to Part 15 of the FCC Rules. These limits are designed to provide reasonable protection against harmful interference in a residential installation. This equipment generates, uses, and can radiate radio frequency energy, and if not installed and used in accordance with the instructions, may cause harmful interference to radio or television reception. However, there is no guarantee that interference will not occur in a particular installation. If this equipment causes interference to radio or television reception, which can be determined by turning the equipment off and on, the user is encouraged to try to correct the interference by one or more of the following measures:

- Reorient or relocate the receiving antenna.
- Increase the separation between the equipment and receiver.
- Connect the equipment into an outlet on a circuit different from that to which the receiver is connected.
- Consult the dealer or an experienced radio/TV technician for help.

Note : Modifications not approved by the party responsible for compliance could void user's authority to operate the equipment.

Wireless Optical Virtual Touch Mouse

B8021MR + C75



User's Guide

Introduction

Congratulations on your purchase of the most innovative mouse, "Virtual Touch mouse". The Virtual Touch mouse features and integrates the advantages of the patented technology of traditional mouse and the up-to-date touch screen technology, enabling users **to operate touch screen functions on Windows 8 by just mouse button click and mouse movement, without fingers touching on screen.** It is designed to make you more productive and more comfortable.

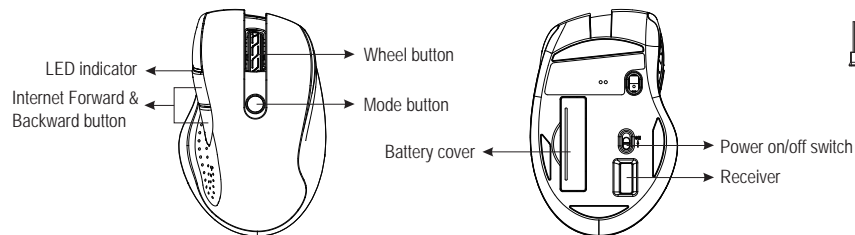
Features

- 2.4G Hz (distance 6~8m), 34 Channels 2²⁴ ID
- Patented and state-of-art emulating touch screen technology
- 2-in-1 design : a traditional mouse with touch screen functions for Windows 8
- To emulate touch screen behaviors by just mouse button click and mouse movement.
- Two switchable modes:
 1. standard mouse mode ----- for traditional mouse functions
 2. Virtual-Touch mode ----- to emulate touch screen functions, with the **Virtual Touch Driver** installed.
- Longer battery life
- 800/1600 dpi switchable (simultaneously press the middle button and right button for 3 seconds to change dpi), default at 1600dpi

Benefits of Virtual Touch Mouse

- To relieve hands fatigue from arm arising and finger touching on screen.
- To achieve the same functions of touch screen without finger touching on the screen.
- To operate the touch screen functions in a remote distance.
- Desktop and Notebook users can also experience the touch screen functions even with a non-touch screen monitor.
- To keep screen always clean. No need to touch the screen with finger tips.

Mouse



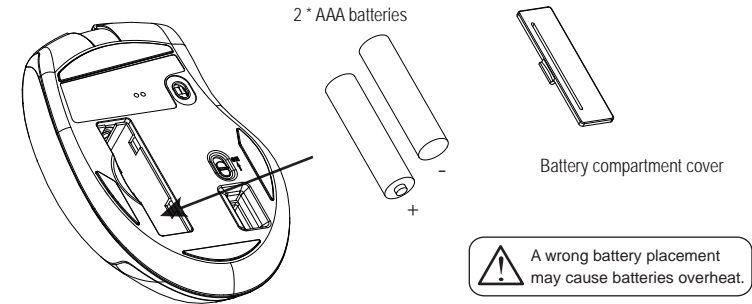
System Requirements

- For standard mouse mode : Windows XP/Vista/7/8, and Mac OS 10.6 or higher
- For Virtual Touch mouse mode: Windows 8 only. **[Not available for Windows RT]**
- USB Port

A. Hardware Installation

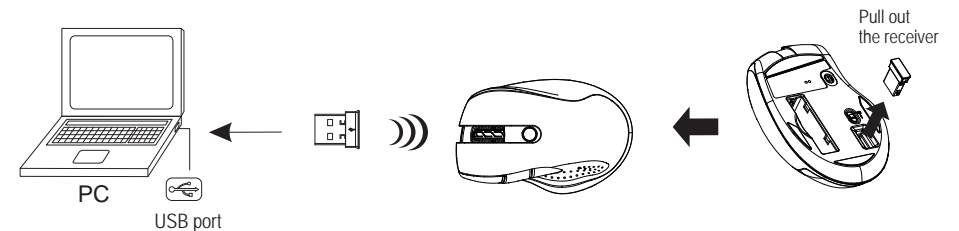
1. Insert the batteries

- Remove the battery cover and insert new batteries.
- Move the power switch to the ON position.
- The Low Power red LED on the left side will be on for 6 seconds after the mouse power is switched to on.



2. Connect the receiver

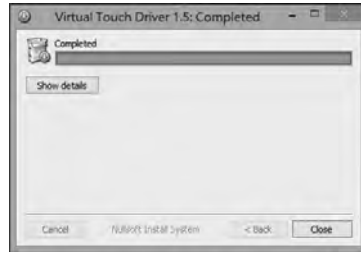
- Turn on your PC.
- Connect the receiver to the USB port on PC.
- Please wait for a while for the PC to detect the receiver device. (The waiting time depends on PC hardware.)



B. Software Installations

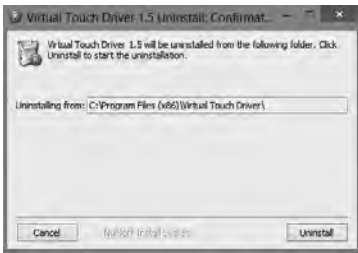
1. Installation

To activate the Virtual Touch mode functions, please insert the accompanied CD into your computer, or download the Virtual Touch Driver from your local brand vendor's website.

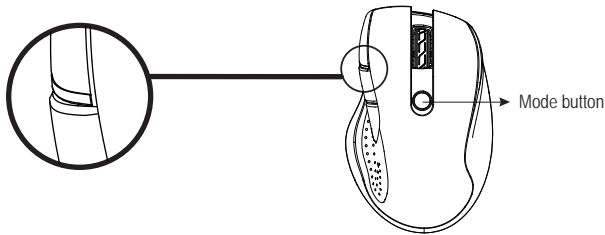


2. Un-installation

To un-install this driver, please go to "Control Panel", click "Uninstall a program", and select it from the list and click "Uninstall".



C. LED Indicators



1. Mode Indicator : Green LED

Press the mode switch button to switch between the two modes.

- Standard Mouse Mode : Green LED Off
- Virtual Touch Mode: Green LED flashing shortly when just switched to this mode or when just back to work after standby.

2. Dpi switch indicator : Red LED

Simultaneously press the middle button and the right button for 3 seconds to switch between 800 dpi and 1600 dpi.

- To 800 dpi: The Red LED will blink for one time.
- To 1600 dpi: The Red LED will blink for two times.

3. Power On Indicator : Red LED

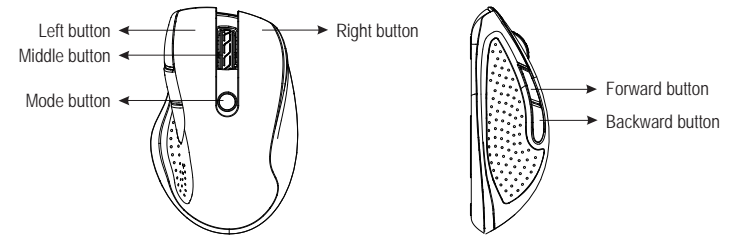
When batteries are installed or power is switched to on, the Red LED will be on for 6 seconds.

4. Low Power Indicator : Red LED

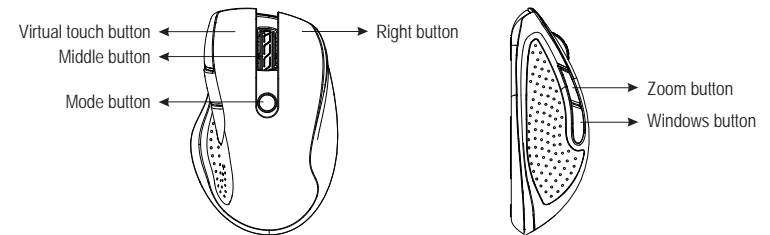
If the battery power is low, the Red LED as the low power indicator will blink for six seconds when the mouse is back to start working.

D. OPERATION

Standard Mouse Mode



Virtual Touch Mode



Mode Comparison	Virtual-Touch Mode	Standard Mode
Green LED	Flash	Off
O.S. Support	Windows 8 only	Windows XP/Vista/7/8 Mac OS 10.6 or higher
Left Button	Virtual-Touch button functions	Traditional Left button functions
4th Button	Zoom button	Forward in Internet Explorer
5th Button	Windows button	Backward in Internet Explorer
Right Button	Traditional Right button functions	
Middle Button	Traditional Middle button functions	
Mode Switch Button	To switch between the 2 modes	

- **Virtual-Touch button:**

Press and hold the Virtual-Touch button, meanwhile slide the mouse along your desk. This equals to your finger touching across the screen. All the one-finger gestures on Windows 8 touch screen can be emulated by just the Virtual-Touch button pressing and mouse movement.

- **Zoom button:**

Press and hold the Zoom button, sliding the mouse backward or forward along your desk, to emulate 2 fingers touching on the touch screen moving apart or closer, in order to zoom in/out a picture, a webpage or documents.

- **Windows button:**

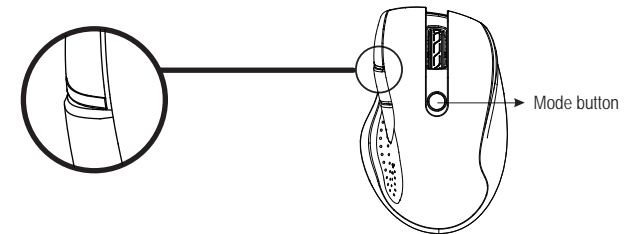
Push the Windows button to switch between wherever you are at and the Windows Start Screen.

- **Note**

- The Virtual-Touch mode functions are not available on Windows RT.
- Some applications, e.g. games, and 3D drawing software, e.g. AutoCAD, Pro/E may not support Virtual-Touch mode functions. Please switch to the Standard Mouse mode under those applications.
- Some applications, like Desktop screen, games, may not support Zoom in/out functions on Touch mode.
- The buttons on Virtual Touch mode will perform the same functions as the Standard Mouse mode, if the Virtual Touch Driver is not installed.

E. Illustrations of Virtual-Touch Mode Functions on Windows 8

Make sure the mouse is on the Virtual-Touch mode; the green LED on the left side will flash when the mouse is switched to this mode.

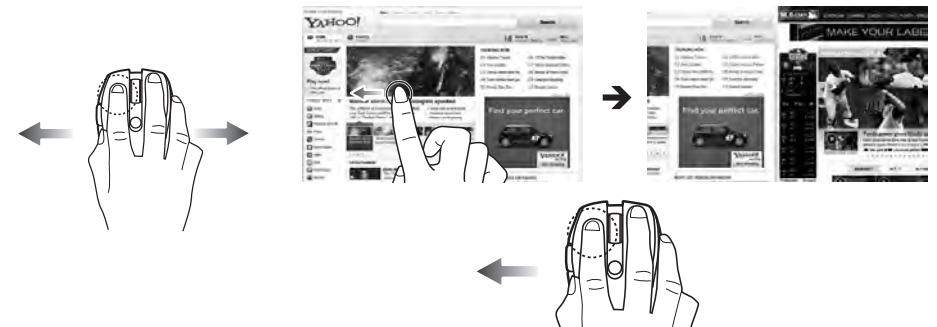


Virtual-Touch button functions

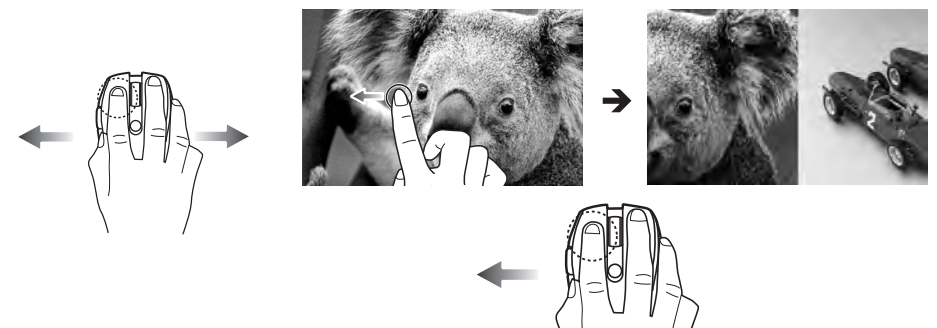
Press and hold the Virtual-Touch button, flicking, swiping or dragging the mouse along the desk, to emulate fingers touching across the touch screen.

a. Horizontal Scroll

to fluidly navigate Metro Mode I.E. backward and forward

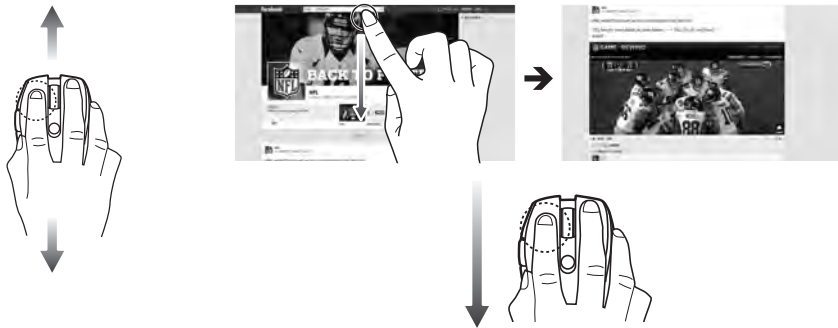


to fluidly browse your photos



b. Vertical Scroll

to fluidly scroll through web pages or your documents



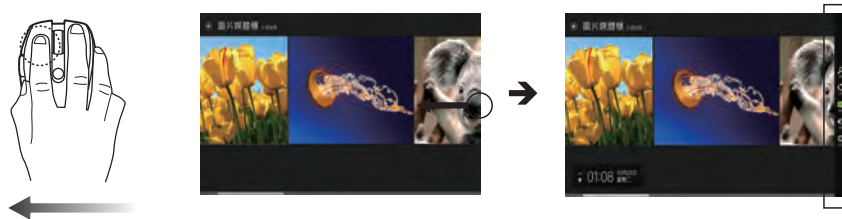
c. Swipe App

Swipe from the left edge to cycle through open app.



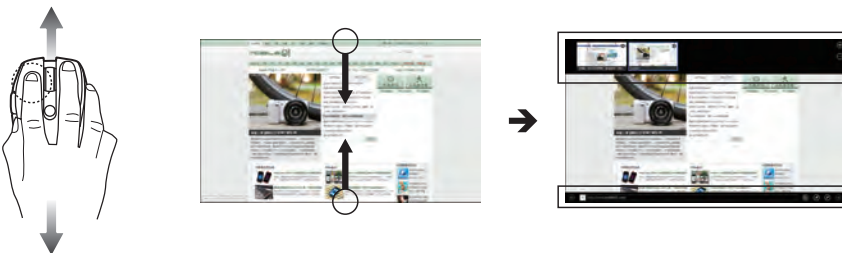
d. Quick Charms Bar Access

Swipe from the right edge to display the charms bar.



d. Display the Application Bar on Metro mode

Swipe from the top or bottom edge to display the application bar on Windows 8 Metro mode.



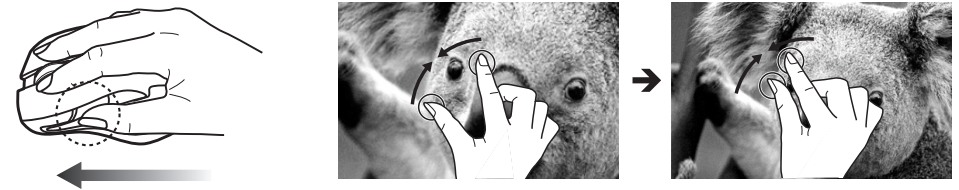
Zoom Button Function

Press and hold the Zoom button, sliding the mouse backward or forward along your desk, in order to zoom in/out a picture, a webpage or documents

Zoom In



Zoom Out



Windows Button Function

Push the Windows Button to switch between wherever you are at and the Metro Start Screen.



CAUTION

Risk of explosion if battery is replaced by an incorrect type.
Dispose of used batteries according to the instructions